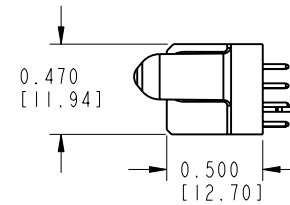
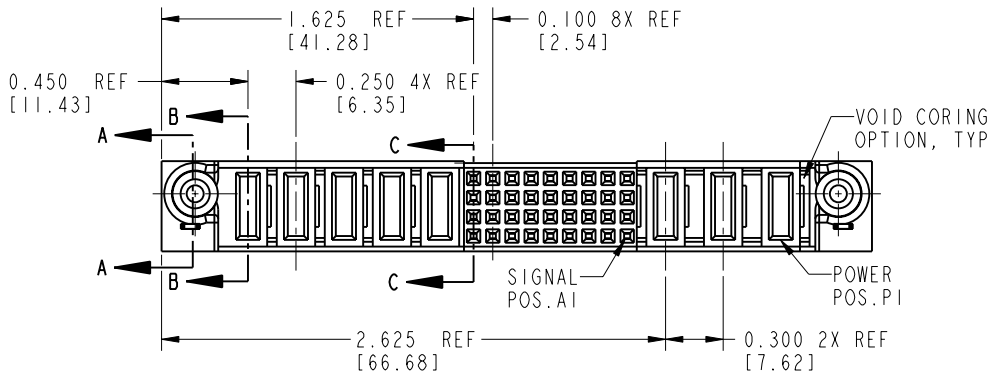
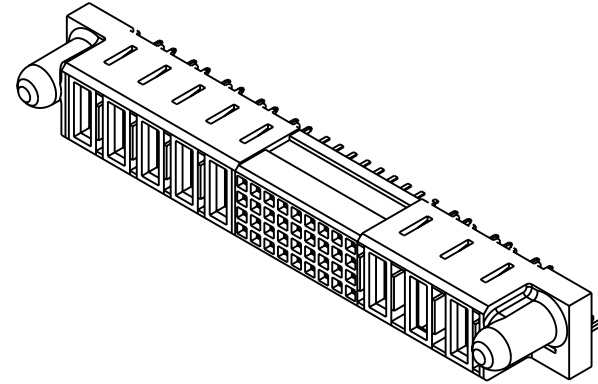
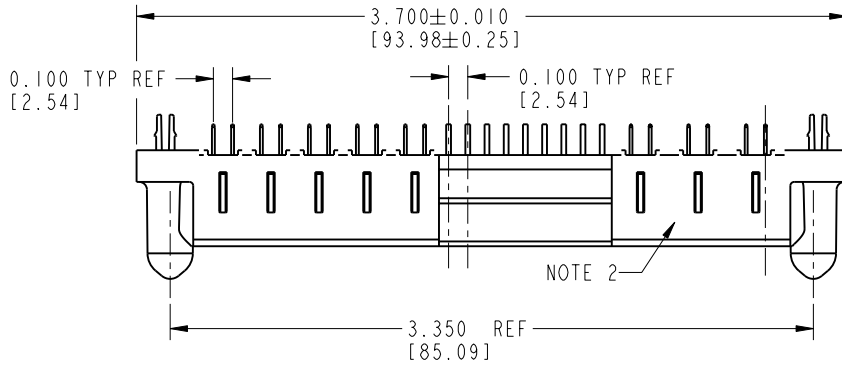


Tous droits strictement réservés. Reproduction ou communication o des liers interdite sous quelque forme que ce soit sans autorisation écrite du propriétaire. Propriété de c FCI. Droits de reproduction FCI.

All rights strictly reserved. Reproduction or issue to third parties in any form, whatever is not permitted without written authority from the proprietor. Property of FCI. Copyright FCI.

PRODUCT NUMBER
51673-001--
NOTE: 3



mat'l code		NOTE 1		tolerances unless otherwise specified		CUSTOMER	
ltr	ecn no.	dr	date	linear	.XX±.01/0.X±0.3	COPY	 www.fciconnect.com
A	V02392	JRW	10-09-00		.XXX±.005/0.XX±0.13	projection	
B	DG05-0375	GuoJM	10/07/05	angles	.XXX±.0020/.XXX±.051		title 3ACP + 36S + 5P VERTICAL SOLDER RECEPTACLE
				dr	0°±2°	INCH/MM	product family PWRBLADE
				engr	C. BAROT 12-09-99	scale	code 213
				chr	J. BROWN 12-09-99	1:1	size A
				appd	J. BROWN 12-09-99		dwg no 51673
sheet index	revision sheet	B	B	B			sheet 1 of 3
1	2	3					

Pro/E

cage code 22526

PDM: Rev:B

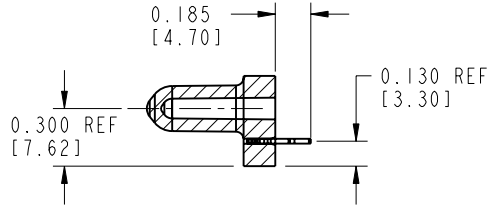
STATUS: Released

Printed: Dec 20, 2010

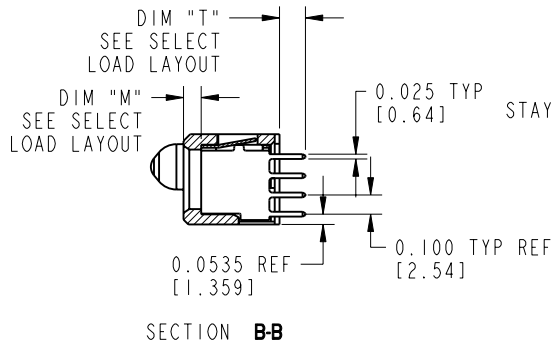
Tous droits strictement réservés. Reproduction ou communication o des liers interdite sous quelque forme que ce soit sans autorisation écrite du propriétaire. Propriété de c FCI. Droits de reproduction FCI.

All rights strictly reserved. Reproduction or issue to third parties in any form, whatever is not permitted without written authority from the proprietor. Property of FCI. Copyright FCI.

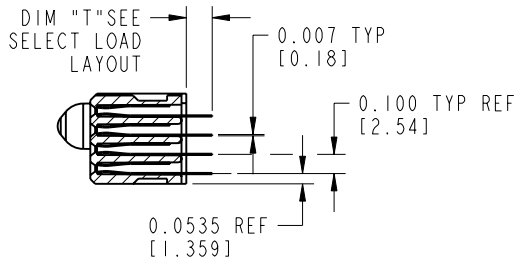
PRODUCT NUMBER
51673-001 --
NOTE: 3



SECTION A-A

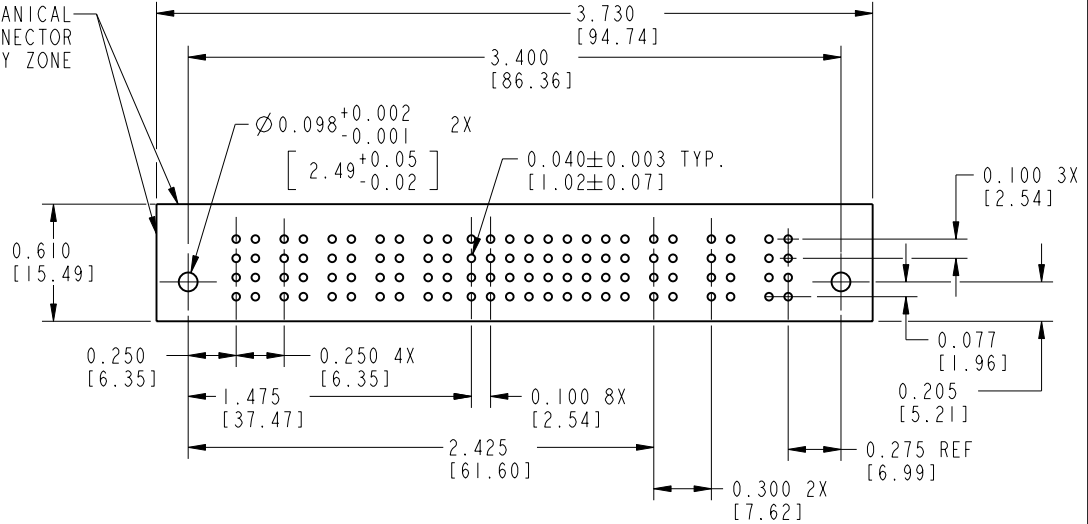


SECTION B-B



SECTION C-C

MECHANICAL CONNECTOR STAY-AWAY ZONE



RECOMMENDED PCB LAYOUT

mat'l code				tolerances unless otherwise specified		CUSTOMER	FCI www.fciconnect.com	
lfr	ecn no.	dr	date	linear	.XX±.01/0.X±0.3	COPY	title 3ACP + 36S + 5P VERTICAL SOLDER RECEPTACLE	
B					.XXX±.005/0.XX±0.13	projection	product family PWRBLADE code 213	
				angles	.XXX±.0020/.XXX±.051		size dwg no	
				dr	0°±2°	INCH/MM	51673	
				engr	C. BAROT 12-09-99	scale	sheet 2	
				chr	J. BROWN 12-09-99	1:1	A	
				appd	J. BROWN 12-09-99		2	
sheet index	revision sheet						cage code 22526	

Pro/E

cage code 22526

PDM: Rev:B

STATUS: Released

Printed: Dec 20, 2010

Tous droits strictement réservés. Reproduction ou communication o des liers interdite sous quelque forme que ce soit sans autorisation écrite du propriétaire. Propriété de c FCI. Droits de reproduction FCI.

FCI

All rights strictly reserved. Reproduction or issue to third parties in any form, whomever is not permitted without written authority from the proprietor. Property of FCI. Copyright FCI.

PRODUCT No.	ROWS	POWER					SIGNAL					POWER			ITEM NO.	QTY	DIM "M" MATING LENGTH ±.010 [0.25]	DIM "T" TAIL LENGTH ±.010 [0.25]	CONTACT TYPE	PLATING FOR MATING		PLATING FOR TAIL									
		E2	P8	P7	P6	P5	P4	9	8	7	6	5	4	3						2	1	P3	P2	P1	E1						
51673-001-- NOTE: 3	D C B A	HA	PD	PD	PD	PD	PD	E	E	E	E	E	E	E	E	E	E	E	E	E	PD	PA	PD	HA	E	36	N/A [N/A]	0.135 [3.43]	SIGNAL	30 u'' [.76um] Au	SnPb
								E	E	E	E	E	E	E	E	E	E	E	E	E					PD	7	0.092 [2.34]	0.135 [3.43]	POWER	30 u'' [.76um] Au	SnPb
								E	E	E	E	E	E	E	E	E	E	E	E	E					PA	1	0.042 [1.07]	0.135 [3.43]	POWER	30 u'' [.76um] Au	SnPb
								E	E	E	E	E	E	E	E	E	E	E	E	E					HA	2	N/A [N/A]	N/A [N/A]	HOLD-DOWN	N/A [N/A]	SnPb

CONNECTORS - NOTES:

1. HOUSING MATERIAL: GLASS FILLED HIGH TEMP.THERMOPLASTIC FLAME RETARDANT PER UL94 V-0.
SIGNAL PIN MATERIAL: COPPER ALLOY
POWER CONTACT MATERIAL: COPPER ALLOY

2. "MANUFACTURER" NAME, P/N, AND DATE CODE TO APPEAR ON THIS SURFACE

3. PLATING:
51673-001 Singal Pin:30u"/0.76um Au OVER 50u"/1.27um Ni ON THE CONTACT AREA,
AND 100u"/2.54um SnPb PLATING OVER 50u"/1.27um Ni ON THE TERMINATION SECTION.
Power Pin:30u"/0.76um Au OVER 50u"/1.27um Ni ON THE CONTACT AREA,
AND 100u"/2.54um SnPb PLATING OVER 50u"/1.27um Ni ON THE TERMINATION SECTION.

- 51673-001LF Singal Pin:30u"/0.76um Au OVER 50u"/1.27um Ni ON THE CONTACT AREA,
AND 78u"/2.00um Sn PLATING OVER 50u"/1.27um Ni ON THE TERMINATION SECTION.
Power Pin:30u"/0.76um Au OVER 50u"/1.27um Ni ON THE CONTACT AREA,
AND 78u"/2.00um Sn PLATING OVER 50u"/1.27um Ni ON THE TERMINATION SECTION.

PART NUMBER 51673-001LF MEETS EUROPEAN UNION DIRECTIVE AND JOTHER COUNTRY REGULATIONS AS DESCRIBED IN GS-22-008.

THE HOUSING WILL WITHSTAND EXPOSURE TO 260° PEAK TEMPERATURE FOR 10 SECONDS IN A WAVE SOLDER APPLICATION WITH A CIRCUIT BOARD.

PCB - NOTES:

4. ALL DIMENSIONS ARE BASIC UNLESS OTHERWISE SPECIFIED.
5. ALL THROUGH HOLES ARE LOCATED WITH A TRUE POSITION OF .004
6. ALL HOLE DIAMETERS ARE FINISHED HOLE SIZE
7. Ø0.098 THROUGH HOLES ARE UNPLATED
8. Ø.0453/1.151 DRILLED HOLES PLATED WITH .0003/.007 MIN SnPb OVER .001/1.03 to .003/.08 Cu PLATING TO ACHIEVE A .080±.003/1.02±.08 HOLE

mat'l code				tolerances unless otherwise specified				CUSTOMER			FCI www.fciconnect.com	
ltr	ecn no.	dr	date	linear	.XX±.01/0.X±0.3			COPY			title	
B					.XXX±.005/0.XX±0.13			projection			3ACP + 36S + 5P VERTICAL SOLDER RECEPTACLE	
				angles	.XXX±.0020/.XXX±.051			INCH/MM			product family	
					0°±2°			scale			PWRBLADE	
				dr	C. BAROT	12-09-99		1:1	A	51673	code	213
				engr	J. BROWN	12-09-99	sheet				3	
				chr	J. BROWN	12-09-99	size					
				appd	J. BROWN	12-09-99	dwg no					
sheet index	revision sheet											