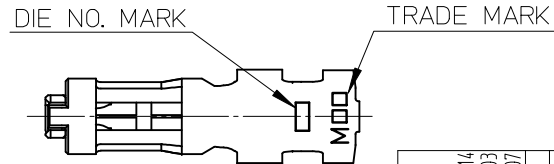
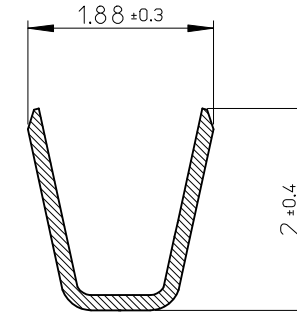
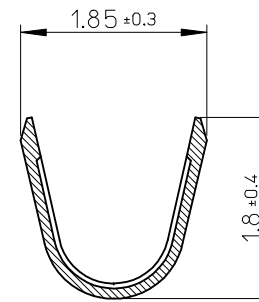
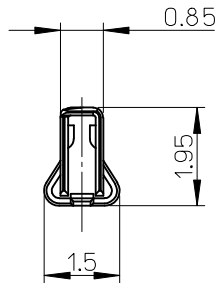
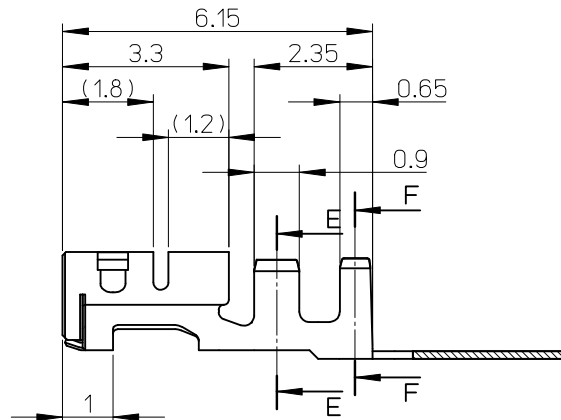
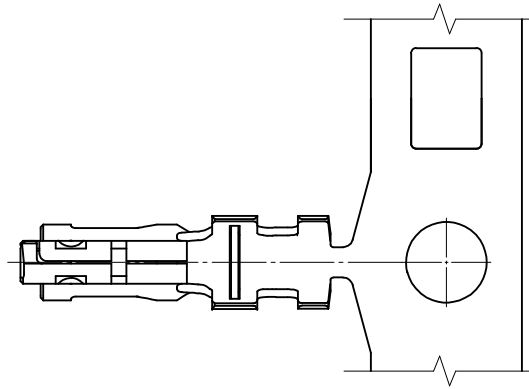


NOTE

1. 使用材料：銅合金 (t=0.15)
MATERIAL: COPPER ALLOY (t=0.15)
2. めっき仕様：(接点部) 部分金メッキ、(圧着部) 錫メッキ、(共通) ニッケル下地
FINISHED: (CONTACT AREA) SEPARATED GOLD PLATING
(CRIMPING AREA) SEPARATED TIN PLATING
(UNDERPLATE) NICKEL OVERALL
3. 適合ハウジング：505151シリーズ
APPLICABLE HOUSING: 505151 SERIES
4. ELV及びRoHS適合
ELV AND RoHS COMPLIANT
5. アプリケーション仕様書(コネクタ取扱説明書): AS-505151-001/-002
APPLICATION SPECIFICATION (CONNECTOR MANUAL):
6. 製品仕様書: 5051510002
PRODUCT SPECIFICATION:
7. 圧着視覚教材(品質要領書): ATS-57427-0000
CRIMPING VISUAL AID:



WIRE RANGE
AWG: #22, #24

INSULATION RANGE
ø1.5 MAX.

5054878000	CHAIN
MATERIAL NO.	FORM
DESIGN UNITS	THIRD ANGLE PROJECTION
METRIC	

GENERAL TOLERANCES (UNLESS SPECIFIED)		DIMENSION STYLE		SCALE	DESIGN UNITS		THIRD ANGLE PROJECTION		
		MM ONLY		10:1	METRIC		THIRD ANGLE PROJECTION		
0.25 UNDER	±0.03	DRAWN BY	DATE	TITLE					
0.25 OVER	0.5 UNDER	MIKEDA01	2015/01/14	2.0MM PITCH W/B CONN. DURAOLIK WITH RETAINER AU PLATING					
0.5 OVER	1.0 UNDER	CHECKED BY	DATE						
1.0 OVER	30 UNDER	KASASAWA	2015/09/03						
10 OVER	30 UNDER	APPROVED BY	DATE	DOCUMENT NO.		SHEET NO.			
30 OVER	±0.25	NUKITA	2015/09/07	SD-505487-001		1 OF 1			
ANGULAR	±1 °	MATERIAL NO.		SEE CHART					
DRAFT WHERE APPLICABLE MUST REMAIN WITHIN DIMENSIONS		SIZE	THIS DRAWING CONTAINS INFORMATION THAT IS PROPRIETARY TO MOLEX INCORPORATED AND SHOULD NOT BE USED WITHOUT WRITTEN PERMISSION						
		A3							

REVISED	DESCRIPTION
EC NO: J2016-0239	
DRWN:MIKEDA01	2015/01/14
CHKD:KASAKAWA	2015/09/03
APPR:NUKITA	2015/09/07
A	