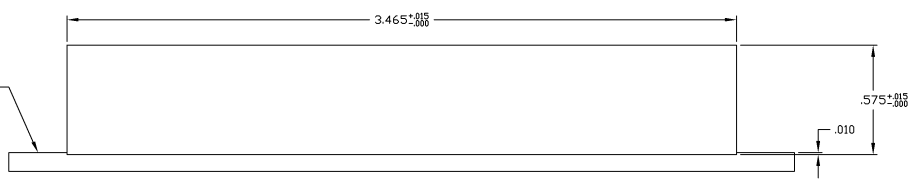
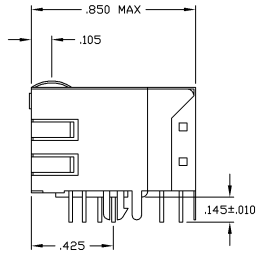
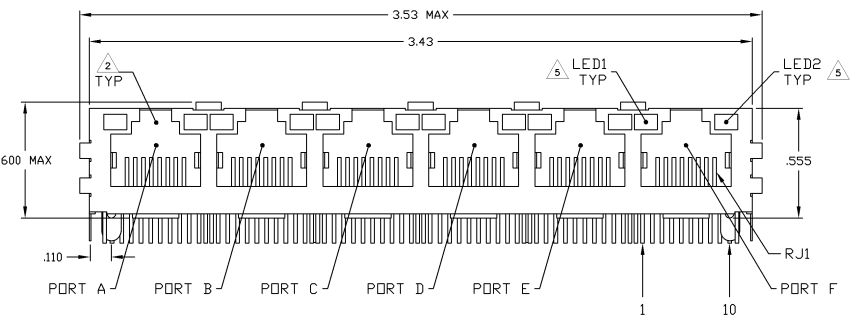
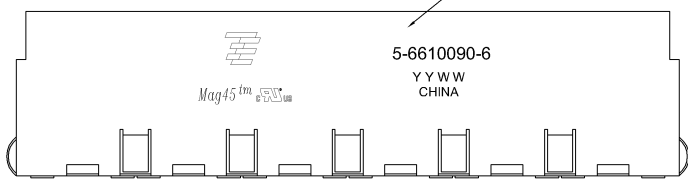


THIS DRAWING IS UNCLASSIFIED
 UNLESS OTHERWISE INDICATED
 ALL RIGHTS RESERVED

REV	DATE	REVISIONS	BY	CHK	APP
AA	22				
8		ECC-09-000566			DL/WORKING VL LR

MECHANICAL:



1X6 SUGGESTED PANEL CUTOUT

- 1. MATERIALS
 - HOUSING - THERMOPLASTIC PET POLYESTER FLAMMABILITY RATING UL 94V-0
 - SHIELD - .010" THICK, C26800 BRASS PREPLATED WITH 30µM/NCH MIN SEMI-BRIGHT
 - NICKEL SOLDER TABS POST DIPPED WITH 100µM/NCH MIN SAC SOLDER
 - MOD JACK CONTACTS - 0.0157 X 0.018" PHOSPHOR BRONZE, 50µM/NCH MIN OVERALL
 - NICKEL UNDERPLATE WITH SELECT 50µM/NCH MIN HARD GOLD FINISH PLATE
 - SOLDER TAILS WITH 100µM/NCH MIN MATTE TIN AND/OR SAC SOLDER DIP
 - LIGHT EMITTING DIODE(LED) - DIFFUSED EPOXY LENS, .020" X .020" CARBON STEEL
 - WIREFRAME LEADS PRE-PLATED WITH 80µM/NCH SILVER OVER 40µM/NCH NICKEL UNDERPLATE OVER 40µM/NCH COPPER UNDERPLATE. POST-PLATED WITH 100µM/NCH MIN MATTE TIN AND/OR SAC SOLDER DIP OR PURE TIN SOLDER DIP
- 2. R/J15 JACK CAVITY CONFORMS TO FCC RULES AND REGULATIONS PART 68, SUB PART F
- 3. MAGNETICS
 - IMPEDANCE: 100 OHMS
 - TURNS RATIO (C/P: CABLE): 1:1 ALL FOUR PAIRS
 - OPEN CIRCUIT INDUCTANCE (OCL): 350µH MIN @100MHz, 0.1VRMS, 8mVDC BIAS FROM 0°C TO 70°C, ALL FOUR PAIRS
 - ALL FOUR PAIRS BI-DIRECTIONAL
 - PERFORMANCE @ 25°C
 - INSERTION LOSS (IL): 1.1dB MAX FROM 0.5MHz TO 100MHz
 - RETURN LOSS (RL): 18dB MIN FROM 0.5MHz TO 40MHz
 - 12-20LOG(F/80)dB MIN FROM 40.1MHz TO 100MHz
 - CROSSTALK ATTENUATION: 25dB MIN FROM 0.5MHz TO 40MHz
 - 33-20*LOG(F/50)dB MIN FROM 40.1MHz TO 100MHz
 - COMMON MODE REJECTION RATIO (CMRR): 30dB MIN FROM 0.5MHz TO 100MHz
 - ISOLATION VOLTAGE: COMPLIES WITH IEEE802.3 2002, PARA 4.6.6.11, ITEM 6
- 4. OPERATING TEMPERATURE: FROM 0°C TO +70°C
- 5. LEDs ARE DRIVEN WITH 5V VOLTAGE AND THE MAX OPERATING CURRENT IS 20mA
 LED COLOR: DOMINANT WAVELENGTH (λD): GREEN 568 nm TYP @ VF=5V
 FORWARD CURRENT (IF): GREEN 12mA TYP @ VF=5V
 DOMINANT WAVELENGTH (λD): YELLOW 588 nm TYP @ VF=5V
 FORWARD CURRENT (IF): YELLOW 13mA TYP @ VF=5V
- 6. INDICATED MAGNETIC CONNECTIONS ARE SYMMETRICAL AND SUPPORT AUTO-MDI/MDIX
- 7. TYCO ELECTRONICS LOGO, PART NUMBER, DATE CODE, COUNTRY OF ORIGIN AND AGENCY APPROVAL MARKING IN APPROXIMATE LOCATION SHOWN
- 8. THE PART IS RECOMMENDED FOR WAVE SOLDERING PROCESS. PREHEAT TEMPERATURE IS 120°C TO 140°C, 30 SECONDS TO 180 SECONDS. PEAK WAVE SOLDERING TEMPERATURE IS 260°C MAX. 10 SECONDS MAX.

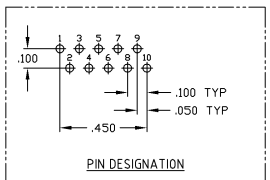
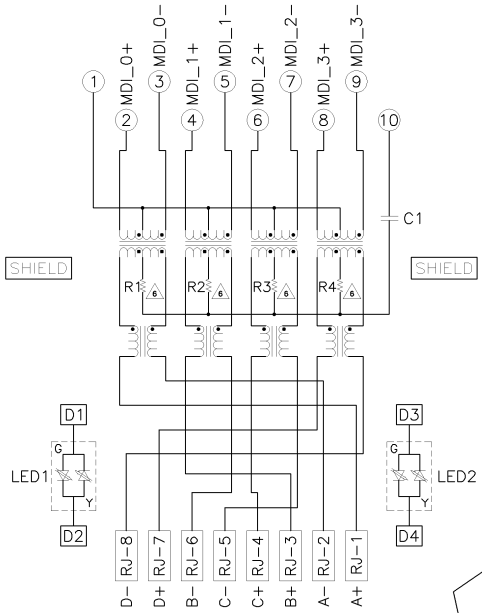
GREEN/YELLOW	GREEN/YELLOW	5-6610090-6
LED1	LED2	PART NUMBER

DESIGNS	REV	DATE	BY	CHK	APP

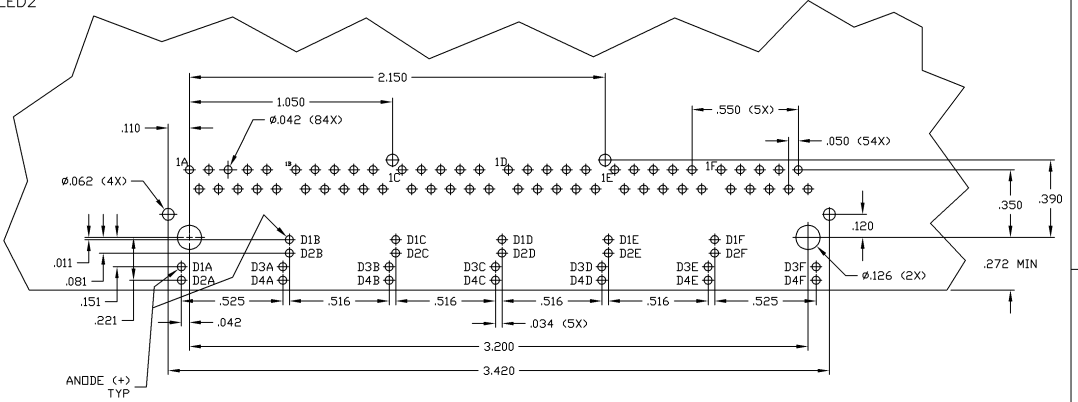
UNCL	CLASS	REV	DATE	BY	CHK	APP

UNCL	CLASS	REV	DATE	BY	CHK	APP

7G01P1 SERIES MAGNETIC CIRCUIT



C1 = 1000pF, 2kV DECOUPLING CAPACITOR
 R1-R4 = 75 OHMS, 1/16 W RESISTORS



SUGGESTED PCB LAYOUT
(COMPONENT SIDE)

THIS DRAWING IS A CONTROLLED DOCUMENT		REV. 22	DATE	BY	CHK	APP
DESIGNED BY		AA				
CHECKED BY						
APPROVED BY						
DATE						
SCALE						
SHEET						
CUSTOMER DRAWING						