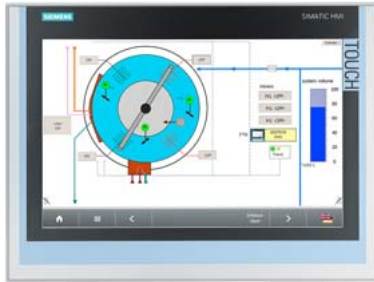


*** spare part *** SIMATIC IFP1500 Flat Panel 15" display (16:10), Touch, extended version up to 30 m, 1280x800 pixels, for 24 V DC and 100-240 V AC, DisplayPort/DVI interface incl. DVI/USB cable 1.8 m



General information	
Product type designation	IFP1500
Short designation	Flat Panel 15" touch ext.
Display	
Design of display	TFT widescreen display, LED backlighting
Screen diagonal	15.4 in; 15"
Screen diagonal [cm]	40 cm
Display width	331.2 mm
Display height	207 mm
On Screen Display (OSD) configuration	No; Adjustable by means of software
Number of colors	16 777 216; 24 bit
Viewing angle	170° x 170°
Resolution (pixels)	
<ul style="list-style-type: none"> Image resolution 	1 280 x 800
<ul style="list-style-type: none"> Horizontal image resolution 	1 280 pixel
<ul style="list-style-type: none"> Vertical image resolution 	800 pixel
<ul style="list-style-type: none"> Pixel size, horizontal 	0.259 mm
<ul style="list-style-type: none"> Pixel size, vertical 	0.259 mm
General features	
<ul style="list-style-type: none"> Brightness/contrast 	400 cd/m ² / 1 000:1
<ul style="list-style-type: none"> Detachable from computer unit 	5 m
<ul style="list-style-type: none"> Luminance 	400 cd/m ²
Backlighting	
<ul style="list-style-type: none"> Type of backlighting 	LED
<ul style="list-style-type: none"> MTBF backlighting (at 25 °C) 	50 000 h; At 25°C
<ul style="list-style-type: none"> Backlight dimmable 	Yes; 0-100 %
Control elements	
Control elements	single-touch screen
Input device	
<ul style="list-style-type: none"> Integrated mouse cursor control 	No
Touch operation	
<ul style="list-style-type: none"> Design as touch screen 	Yes; Analog-resistive
<ul style="list-style-type: none"> Monitor keyboard 	Yes
Installation type/mounting	
Design	Built-in unit
Front mounting	Yes
Built-in unit	Yes; Portrait mode possible
maximum permitted forward tilt angle from vertical	35°
maximum permitted backward tilt angle from vertical	35°

Supply voltage	
Type of supply voltage	AC/DC
Rated value (DC)	24 V
permissible range, lower limit (DC)	19.2 V
permissible range, upper limit (DC)	28.8 V
Rated value (AC)	100 V; Up to 240V, 50/60 Hz
permissible range, lower limit (AC)	90 V
permissible range, upper limit (AC)	264 V
Power loss	
Power loss, typ.	40 W
Power loss, max.	65 W
Interfaces	
USB on the rear	Yes; 2x onboard
Connection for keyboard/mouse	USB
Video interfaces	
<ul style="list-style-type: none"> DVI-D 	Yes
<ul style="list-style-type: none"> DisplayPort 	Yes; DisplayPort V1.1
Touch interfaces	
<ul style="list-style-type: none"> USB 	Yes
Degree and class of protection	
IP (at the front)	IP65
IP (rear)	IP20
NEMA (front) <ul style="list-style-type: none"> Enclosure Type 4 at the front 	Yes
Standards, approvals, certificates	
CE mark	Yes
cULus	Yes; Corresponds to UL 508
RCM (formerly C-TICK)	Yes
KC approval	Yes
Use in hazardous areas	
<ul style="list-style-type: none"> FM Class I Division 2 	No
Ambient conditions	
Ambient temperature during operation	
<ul style="list-style-type: none"> min. 	0 °C
<ul style="list-style-type: none"> max. 	50 °C; Vertical installation (horizontal)
Ambient temperature during storage/transportation	
<ul style="list-style-type: none"> min. 	-20 °C
<ul style="list-style-type: none"> max. 	60 °C
Relative humidity	
<ul style="list-style-type: none"> Operation, max. 	95 %; no condensation
Vibrations	
<ul style="list-style-type: none"> Vibration load in operation 	10 m/s ²
<ul style="list-style-type: none"> Vibration load during transport/storage 	10 m/s ²
Shock testing	
<ul style="list-style-type: none"> Shock load during operation 	150 m/s ²
<ul style="list-style-type: none"> shock acceleration during storage/transport 	150 m/s ²
Mechanics/material	
Enclosure material (front) <ul style="list-style-type: none"> Aluminum 	Yes
Dimensions	
Width of the housing front	415 mm
Height of housing front	310 mm
Mounting cutout, width	396 mm; Tolerance: +1 mm
Mounting cutout, height	291 mm; Tolerance: +1 mm
Overall depth	62.5 mm
Weights	
Weight (without packaging)	3.9 kg
Weight (with packaging)	5 kg
last modified:	11/18/2021 