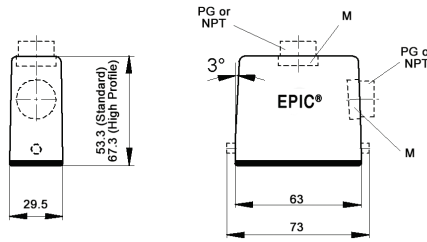


# EPIC® HA 10 standard & high profile hood

Hood with single lever bolts



all dimensions are in mm

**Technical data**

**IP Protection class:** UL 50E Type 4, 12 IP65

**Complete the installation**

HA dust covers page 429

**Approvals**

UL US RoHS DVE

**PG**

size	PG hood part number	Profile	SKINTOP® gland	
			plastic	metal
<b>Top entry</b>				
13	104460	std	53015030	52015730
16	104461	std	53015040	52015740
16	704602	high	53015040	52015740
21	704604	high	53015040	52015740
<b>Side entry</b>				
16	104450	std	53015040	52015740
16	704622	high	53015040	52015740
21	104455	std	53015050	52015750
21	704624	high	53015050	52015750

PG hood provided with EPIC® SM/SP gland

**NPT**

size	NPT hood part number	Profile	SKINTOP® gland	
			plastic	metal
<b>Top entry</b>				
1/2"	104460NP	std	S1112	53112024
1/2"	704602NP	high	S1112	53112024
3/4"	104461NP	std	S1134	53112034
3/4"	704604NP	high	S1134	53112034
<b>Side entry</b>				
1/2"	104450NP	std	S1112	53112024
1/2"	704622NP	high	S1112	53112024
3/4"	104455NP	std	S1134	53112034
3/4"	704624NP	high	S1134	53112034

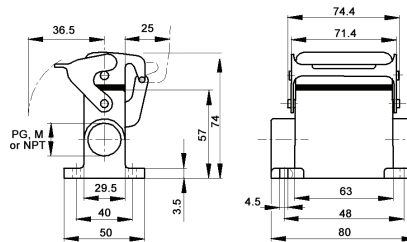
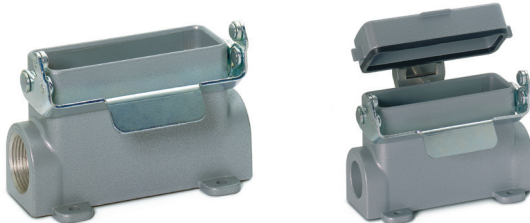
**metric**

size	Metric hood* part number	Profile	SKINTOP® gland	
			plastic	metal
<b>Top entry</b>				
20	19446000	std	53111020	53112020
20	79460200	high	53111020	53112020
25	19446100	std	53111030	53112030
25	79460400	high	53111030	53112030
<b>Side entry</b>				
20	19445000	std	53111020	53112020
20	79462200	high	53111020	53112020
25	19445500	std	53111030	53112030
25	79462400	high	53111030	53112030

\* Top-entry and high profile hoods do not come with a neck

# EPIC® HA 10 surface mount base

Surface mount base with single lever



all dimensions are in mm

**Technical data**

**IP Protection class:** UL 50E Type 4, 12 IP65

**Complete the installation**

HA dust covers page 429

**Approvals**

UL US RoHS DVE

**PG**

size	PG base part number	Dust cover	SKINTOP® gland	
			plastic	metal
<b>One entry</b>				
16	104481	no	53015040	52015740
16	704552	yes	53015040	52015740
21	104480	no	53015050	52015750
21	704554	yes	53015050	52015750
<b>Two entries</b>				
16	104501	no	53015040	52015740
16	704562	yes	53015040	52015740
21	104500	no	53015050	52015750
21	704564	yes	53015050	52015750

PG base provided with EPIC® SM/SP gland

**NPT**

size	NPT base part number	Dust cover	SKINTOP® gland	
			plastic	metal
<b>One entry</b>				
1/2"	104481NP	no	S1112	53112024
1/2"	704552NP	yes	S1112	53112024
3/4"	104480NP	no	S1134	53112034
3/4"	704554NP	yes	S1134	53112034
<b>Two entries</b>				
1/2"	104501NP	no	S1112	53112024
1/2"	704562NP	yes	S1112	53112024
3/4"	104500NP	no	S1134	53112034
3/4"	704564NP	yes	S1134	53112034

NPT base provided with NPT fitting

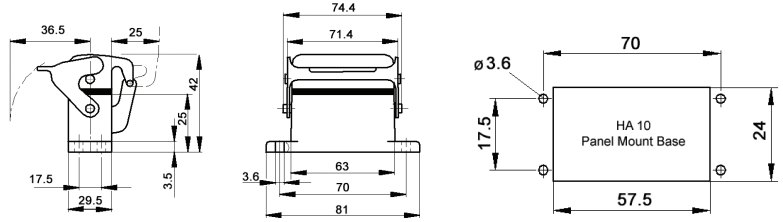
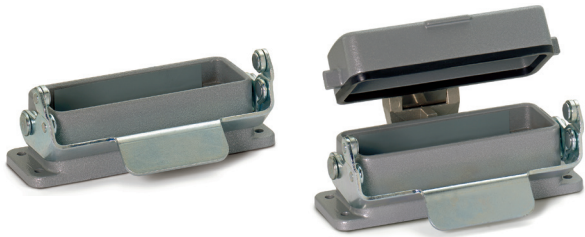
**metric**

size	Metric base part number	Dust cover	SKINTOP® gland	
			plastic	metal
<b>One entry</b>				
20	19448100	no	53111020	53112020
20	79455200	yes	53111020	53112020
25	19448000	no	53111030	53112030
25	79455400	yes	53111030	53112030
<b>Two entries</b>				
20	19450100	no	53111020	53112020
20	79456200	yes	53111020	53112020
25	19450000	no	53111030	53112030
25	79456400	yes	53111030	53112030

If not otherwise specified, all values relating to the product are nominal values. Photographs are not to scale and are not true representations of the products in question.

# EPIC® HA 10 panel mount base

## Panel mount base with single lever



all dimensions are in mm

### Technical data

**IP Protection class:** UL 50E Type 4, 12  
IP65

### Complete the installation

HA dust covers  
page 429

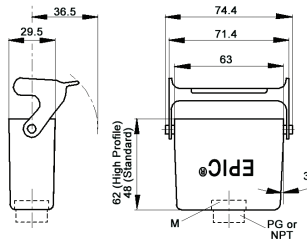
### Approvals



Dust cover included	Part number
no	104420C0
yes	704440C0

# EPIC® HA 10 cable coupler hood

## Standard & high profile cable coupler with single lever



all dimensions are in mm

### Technical data

**IP Protection class:** UL 50E Type 4, 12  
IP65

### Complete the installation

HA dust covers  
page 429

### Approvals



### PG

PG coupler		SKINTOP® gland	
size	part number	plastic	metal
<b>Standard profile</b>			
PG 13	104390	53015030	52015700
PG 16	704500	53015040	52015740
<b>High profile</b>			
PG 21	704504	53015050	52015750

PG coupler provided with EPIC® SM/SP gland

### NPT

NPT coupler		SKINTOP® gland	
size	part number	plastic	metal
<b>Standard profile</b>			
1/2"	104390NP	S 1112	53112024
1/2"	704500NP	S 1112	53112024
<b>High profile</b>			
3/4"	704504NP	S 1134	53112034

NPT coupler provided with NPT fitting

### metric

Metric coupler*		SKINTOP® gland	
size	part number	plastic	metal
<b>Standard profile</b>			
M20	19439000	53111020	53112020
M25	79450000	53111030	53112030
<b>High profile</b>			
M25	79450400	53111030	53112030

\* Metric couplers do not come with a neck