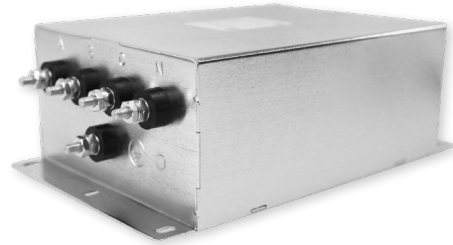


# 3V

## PREMIUM PERFORMANCE 3-PHASE Π FILTER

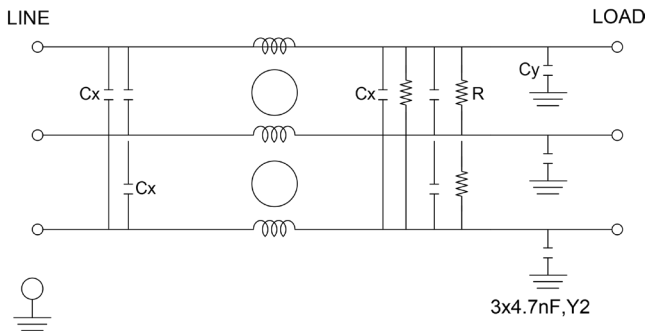
### FEATURES

- » **Rated currents** include **16A and 24A**
- » Dual Stage Line Filter
- » Available with **S** (studs) option
- » Flange Mount Available
- » Premium performance design
- » Y-cap value can be adjusted to fit specification



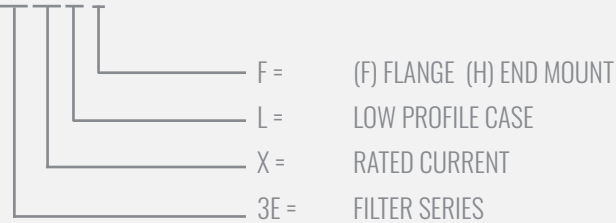
### ELECTRICAL SCHEMATIC

#### DELTA - SUFFIX "D"



### HOW TO ORDER

3F15 L F



**NOTE:** USE ANY COMBINATION OF -X (AMPS) WITH ANY -Y RATINGS  
E.G. **3F15 LF**(15 AMPS, LOW PROFILE CASE, FLANGE MOUNT)

### SPECIFICATIONS

**OPERATING FREQUENCY** 50/60HZ  
**MAX. OPERATING VOLTAGE** 440AC +10%  
**TERMINALS (-T)** STUDS:10-32(15-45A),

**TYP. WEIGHT, LBS (KG)** 11.55 (5.23)

#### LEAKAGE CURRENT

@ **250 VAC 60 HZ** 0 - 3.6 mA Max.

#### HIPOT RATINGS

**LINE TO GROUND** 2200 VDC - 3200 VDC

### TYPICAL APPLICATIONS

- ✓ High Power Rectifiers
- ✓ Uninterrupted Power Supplies
- ✓ Processing Equipment
- ✓ Alternative Energy (EV Charging & Solar)
- ✓ Factory Machinery

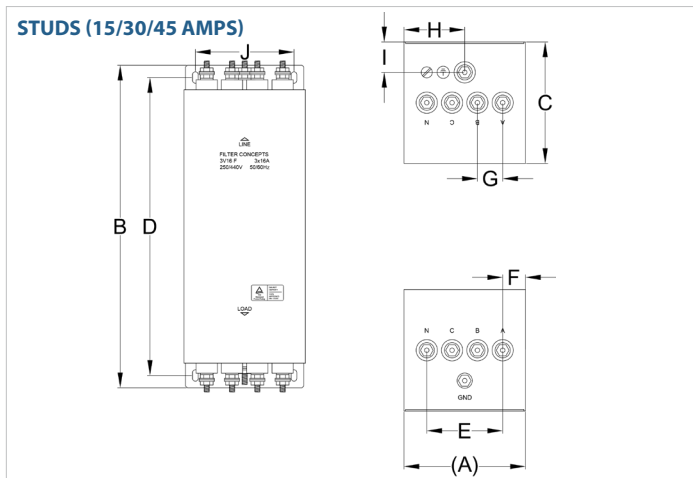
# 3V

## PREMIUM PERFORMANCE 3-PHASE Π FILTER

MODEL NO.	RATED CURRENT (A) @ 40° C	Y-CAP, nF	LEAKAGE CURRENT, mA @ 250V AC, 60 Hz	TERMINAL OPTIONS		MAX. DIMENSIONS" (MM)		
				(QD)INPUT/OUTPUT	(S) INPUT/OUTPUT	WIDTH	(LENGTH)	HEIGHT
3V16	16	*	1.8mA	*	*	4.00"(102)	10.62"(270)	4.00"(102)
3V16B F	16	4x.001μF/4x.022μF	3.6mA		✓	4.00"(102)	10.62"(270)	4.00"(102)
3V16D F	16	3x.001μF/3x.01μF	1.8mA		✓	4.00"(102)	10.62"(270)	4.00"(102)
3V24	24	*	1.8mA	*	*	5.00"(127)	14.96"(380)	4.75"(121)

\*Contact factory for dimensions.

### 3V MECHANICAL OUTLINES



SERIES	(A)	B	C	D	E	F	G	H	I	J
<b>16 amps</b>	4.00" (102)	10.62" (270)	4.00" (102)	9.81" (249)	2.50" (64)	0.75" (19)	0.83" (21)	2.00" (51)	1.00" (25)	3.25" (83)
<b>24 amps</b>	5.00" (127)	14.96" (380)	4.75" (121)	13.98" (355)	3.00" (76)	1.00" (25)	1.00" (25)	2.50" (64)	1.43" (36)	4.00" (102)

TYPICAL TOLERANCE: +/-0.02" (0.50MM)

# 3V

## PREMIUM PERFORMANCE 3-PHASE $\Pi$ FILTER

### TYPICAL INSERTION LOSS, dB (50/50 Ohm)

Amps	Freq (MHz)	0.15	0.5	1.0	10	30
16	CM (dB)	55	60	54	58	59
	DM (dB)	40	50	45	54	58
24	CM (dB)	55	60	54	58	59
	DM (dB)	40	50	45	54	58