

# 3H

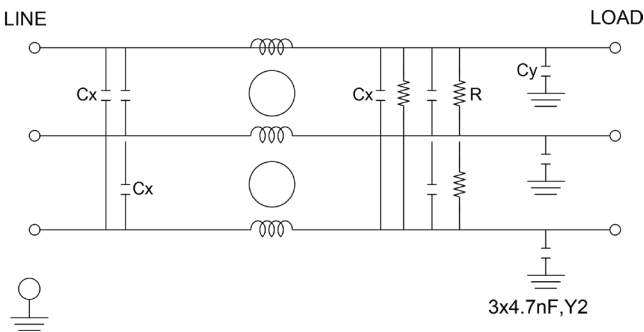
## HIGH VOLTAGE 3-PHASE POWER FILTER

### FEATURES

- » Rated currents include **15A, 30A, 45A, 60A, 100A, and 140A**
- » Dual Stage Line Filter
- » Available with **S** (studs) option
- » High Voltage Design
- » End Mount Case & Flange Mount Available
- » Agency Approvals UL E78081 and CSA LR53652
- » Y-cap value can be adjusted to fit specification

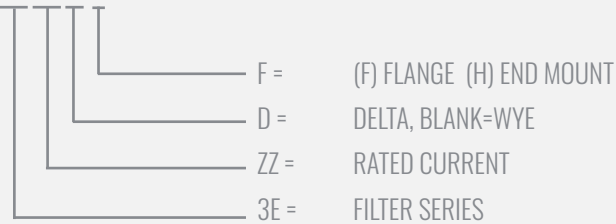
### ELECTRICAL SCHEMATIC

#### DELTA - SUFFIX "D"

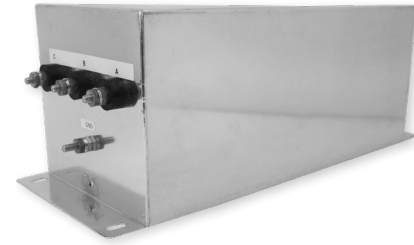


### HOW TO ORDER

3HZZD F



**NOTE:** USE ANY COMBINATION OF -X (AMPS) WITH ANY -Y RATINGS  
E.G. **3H45D F**(45 AMPS, DELTA DESIGN, FLANGE MOUNT)



### SPECIFICATIONS

OPERATING FREQUENCY	50/60HZ
MAX. OPERATING VOLTAGE*	480AC +10%
TERMINALS (-T)	STUDS:10-32(15-45A), 1/4-20 (60A), 5/16-18 (100A) 3/8-16 (140A)

TYP. WEIGHT, LBS (KG)	6.36-62 (2.88-28.12)
-----------------------	----------------------

#### LEAKAGE CURRENT

@ 480 VAC 60 HZ	0 - 3.9 mA Max.
-----------------	-----------------

#### HIPOT RATINGS

LINE TO GROUND	3200 VDC - 3500 VDC
----------------	---------------------

### TYPICAL APPLICATIONS

- ✓ High Power Rectifiers
- ✓ Uninterrupted Power Supplies
- ✓ Processing Equipment
- ✓ Alternative Energy (EV Charging & Solar)
- ✓ Factory Machinery

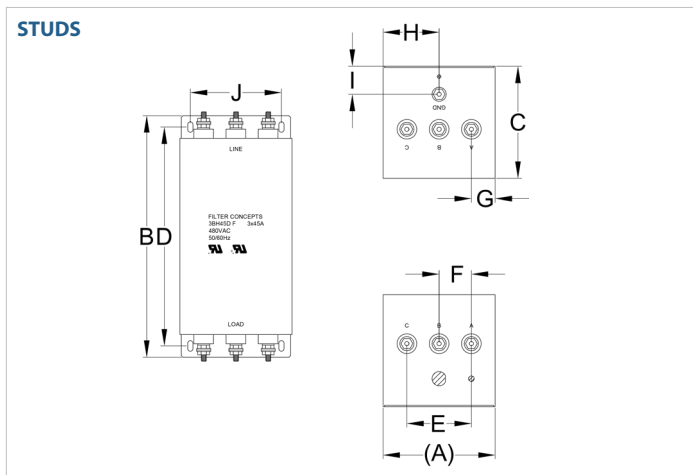
# 3H

## HIGH VOLTAGE 3-PHASE POWER FILTER

MODEL NO.	RATED CURRENT (A) @ 40° C	Y-CAP, nF	LEAKAGE CURRENT, mA @ 480V AC, 60 Hz	TERMINAL OPTIONS		MAX. DIMENSIONS" (MM)		
				(QD)INPUT/OUTPUT	(S) INPUT/OUTPUT	WIDTH	(LENGTH)	HEIGHT
3H15	15	*	3.9	*	*	5.50"(140)	8.87"(225)	3.00"(76)
3H15D	15	*	3.9	*	*	5.50"(140)	8.87"(225)	3.00"(76)
3H15D F	15	3x.01µF/3x.0047µF	3.9		✓	5.50"(140)	8.87"(225)	3.00"(76)
3H15D H	15	3x.01µF/3x.0047µF	3.9		✓	5.50"(140)	8.87"(225)	3.00"(76)
3H30	30	*	3.9	*	*	5.00"(127)	9.96"(253)	4.75"(121)
3H30D	30	*	3.9	*	*	5.00"(127)	9.96"(253)	4.75"(121)
3H30D H	30	3x.01µF/3x.0047µF	3.9		✓	5.00"(127)	9.96"(253)	4.75"(121)
3H45	45	*	3.9	*	*	5.00"(127)	12.96"(329)	4.75"(121)
3H45D	45	*	3.9	*	*	5.00"(127)	12.96"(329)	4.75"(121)
3H45D F	45	3x.01µF/3x.0047µF	3.9		✓	5.00"(127)	12.96"(329)	4.75"(121)
3H60	60	*	3.9	*	*	6.50"(165)	14.00"(356)	4.75"(121)
3H60 F	60	4x.01µF/4x.0047µF	5.2		✓	6.50"(165)	14.00"(356)	4.75"(121)
3H60D	60	*	3.9	*	*	6.50"(165)	14.00"(356)	4.75"(121)
3H60D F	60	3x.01µF/3x.0047µF	3.9		✓	6.50"(165)	14.00"(356)	4.75"(121)
3H60D H	60	3x.01µF/3x.0047µF	3.9		✓	6.50"(165)	14.00"(356)	4.75"(121)
3H100	100	*	3.9	*	*	7.50"(191)	17.50"(445)	5.75"(146)
3H100D	100	*	3.9	*	*	7.50"(191)	17.50"(445)	5.75"(146)
3H100D F	100	3x.01µF/3x.0047µF	3.9		✓	7.50"(191)	17.50"(445)	5.75"(146)
3H140D	140	*	3.9	*	*	7.50"(191)	20.50"(521)	5.75"(146)
3H140D F	140	3x.01µF/3x.0047µF	3.9		✓	7.50"(191)	20.50"(521)	5.75"(146)

\*Contact factory for dimensions.

### 3H MECHANICAL OUTLINES (MM)



# 3H

## HIGH VOLTAGE 3-PHASE POWER FILTER

SERIES	(A)	B	C	D	E	F	G	H	I	J	K
<b>15 amps</b>	5.50" (140)	8.87" (225)	3.00" (76)	8.06" (205)	3.38" (86)	1.06" (27)	1.13" (29)	2.75" (70)	1.00" (25)	4.75" (121)	N/A
<b>30 amps</b>	5.00" (127)	9.96" (253)	4.75" (121)	8.86" (225)	3.00" (76)	1.00" (25)	1.50" (38)	2.50" (64)	1.43" (36)	4.00" (102)	N/A
<b>45 amps</b>	5.00" (127)	12.96" (329)	4.75" (121)	11.98" (304)	3.00" (76)	1.00" (25)	1.50" (38)	2.50" (64)	1.43" (36)	4.00" (102)	N/A
<b>60 amps</b>	6.50" (165)	14.00" (356)	4.75" (121)	13.00" (330)	3.00" (76)	1.75" (44)	1.50" (38)	3.25" (83)	1.43" (36)	4.25" (108)	N/A
<b>100 amps</b>	7.50" (191)	17.50" (445)	5.75" (146)	16.24" (412)	5.00" (127)	1.25" (32)	1.25" (32)	1.25" (32)	3.50" (89)	6.37" (162)	N/A
<b>140 amps</b>	7.50" (191)	20.50" (521)	5.75" (146)	19.24" (489)	5.25" (133)	1.13" (29)	1.75" (44)	1.13" (29)	3.50" (89)	6.37" (162)	3.19" (81)

TYPICAL TOLERANCE: +/-0.02" (0.50MM)

### TYPICAL INSERTION LOSS, dB (50/50 Ohm)

Amps	Freq (MHz)	Insertion Loss (dB)				
		0.15	0.5	1.0	10	30
<b>15</b>	CM (dB)	40	60	48	64	71
	DM (dB)	50	60	50	63	70
<b>30</b>	CM (dB)	40	60	48	64	71
	DM (dB)	50	60	50	63	70
<b>45</b>	CM (dB)	40	60	48	64	71
	DM (dB)	50	60	50	63	70
<b>60</b>	CM (dB)	40	60	48	64	71
	DM (dB)	50	60	50	63	70
<b>100</b>	CM (dB)	40	60	48	64	71
	DM (dB)	50	60	50	63	70
<b>140</b>	CM (dB)	40	60	48	64	71
	DM (dB)	50	60	50	63	70