

**Withwave's Terminations** are composed of broadband, due to the coaxial construction, It offers a excellent performance specified from DC to 18 GHz. Precision SMA coaxial connector interfaces ensure an good impedance match across wide bandwidth.

### ■ Features

- DC to 18 GHz
- Power rating : 2 W @ 25~70 °C
- Temperature range : -55 ~ 100 °C

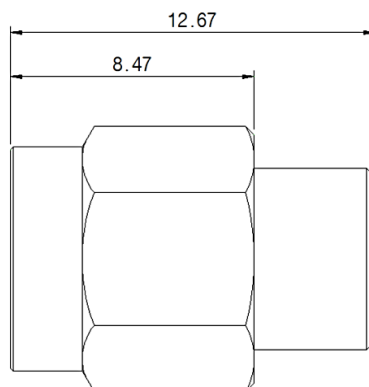


### ■ Specification

Scope	Specification	TM06-02-01F
Electrical	Impedance(Ohm)	50
	Freq. range (GHz)	DC to 18
	Power rating	2 W @ 25~70 °C
Material	Dielectric	PTFE
	Center Contact	Beryllium copper with gold plated
	Body & Connector	Stainless steel (Passivated)

### ■ Drawing

Unit : mm



### ■ Test Result (Return Loss)

**Freq: 10 MHz to 18 GHz**

