

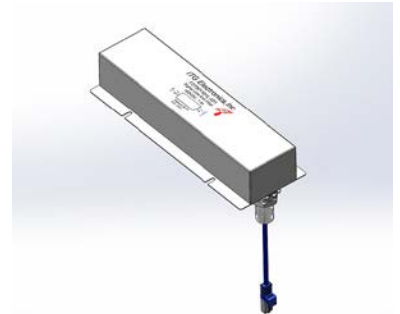


F2782Y Series



1. Features :

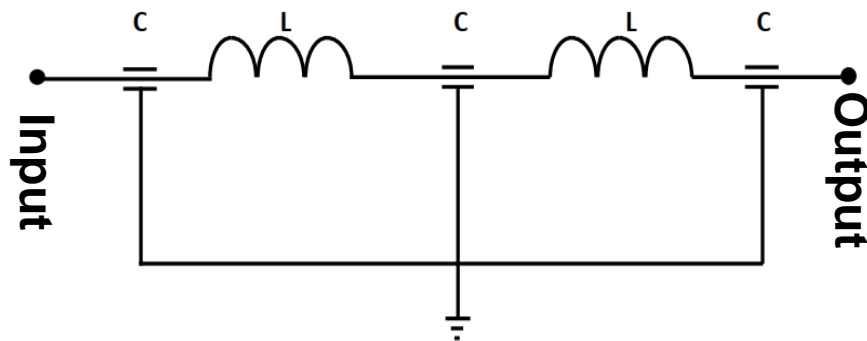
- Network filter provide clean signal and data into Shielded rooms or MRI rooms through Keystone and RJ45 Connector
- Filter compatible with IEEE Type 1/Type 2/Type 3/Type 4 PoE application up to 100W PSE
The filter provide: 100dB Min attenuation from 30MHz to 10GHz.
- Voltage Rating: 60VDC
- Hi-Pot: Line to Ground: 200VDC for 2 sec
- Ambient Temperature Range: -25°C To +85°C
- Filter components are encapsulated in a plated metal enclosure
- UL listed



2. Electrical Characteristics :

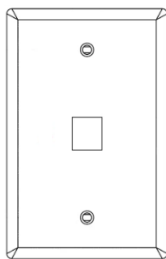
ITG Part Number	# of Channels	Operating Current (A) @ 60°C	Input Terminal	Output Terminal
F2782Y001L-061	1	1.5	Cat6a Keystone Jack	Cat6a RJ45 Plug
F2782Y001L-062	2	1.5	Cat6a Keystone Jack	Cat6a RJ45 Plug
F2782Y001L-051	1	1.5	Cat5 RJ45 Plug	Cat5 RJ45 Plug
F2782Y001L-052	2	1.5	Cat5 RJ45 Plug	Cat5 RJ45 Plug

3. Schematic:

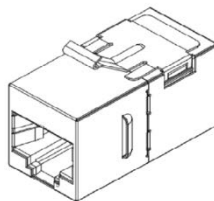


8 Identical Circuits

4. Output Wall Plate Installation Options (Wall Plat and CAT6a Couplers are Not Included):



Wall Plate



Shielded CAT6a Coupler



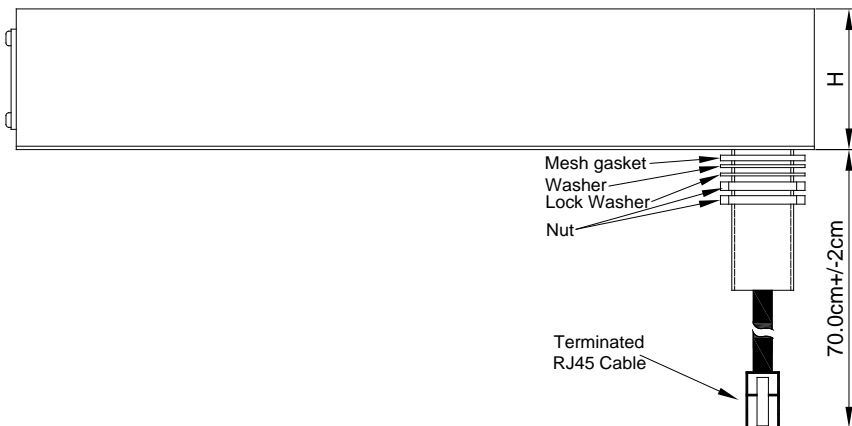
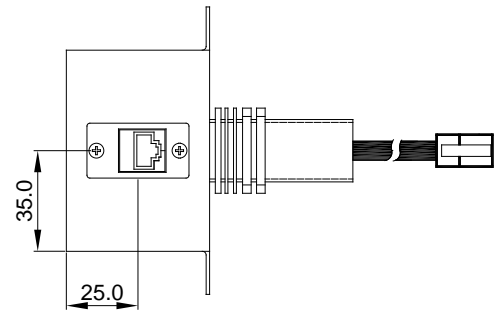
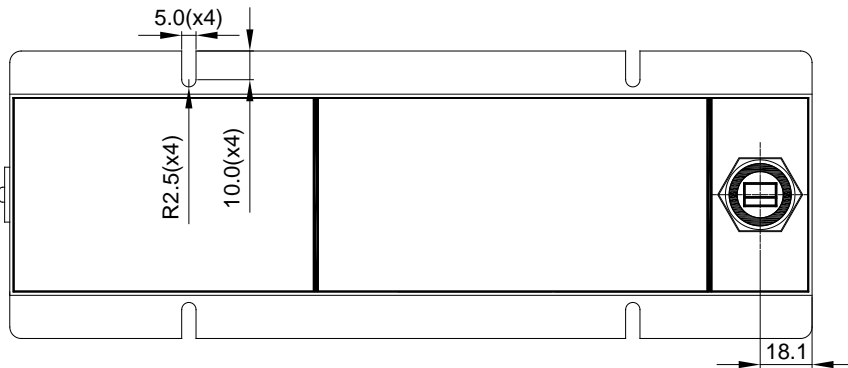
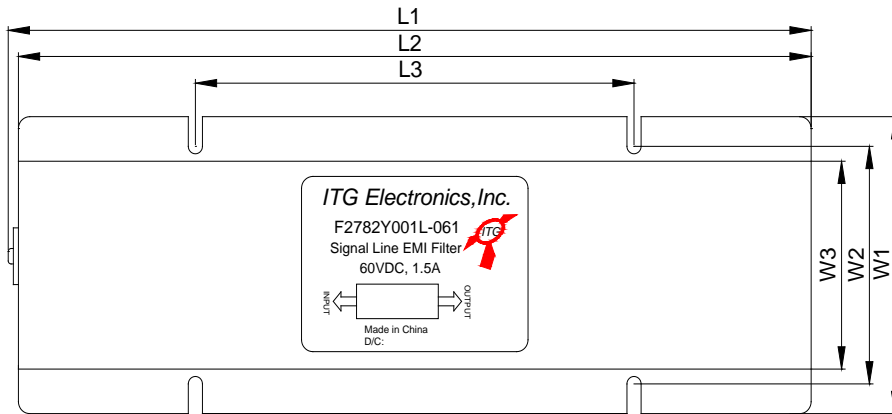
CAT6a Pigtail From EMI Filter Box

● New York 1 914 347 2474 ● Taipei 886 2 2698 8669 ● Kaohsiung 886 7 350 2275
 ● Japan 81 568 85 2830 ● Shenzhen 86 755 8418 6263 ● Shanghai 86 21 5424 5141 ● Hong Kong 852 9688 9767
 ● sales@ITG-Electronics.com ● www.ITG-Electronics.com Revision B.3, May 19, 2023

*Due to continuous product improvement, all specifications are subject to change without prior notice. Kindly contact an ITG field application engineer or a sales representative prior to purchase.

5. Mechanical Dimensions in mm, ±2mm:

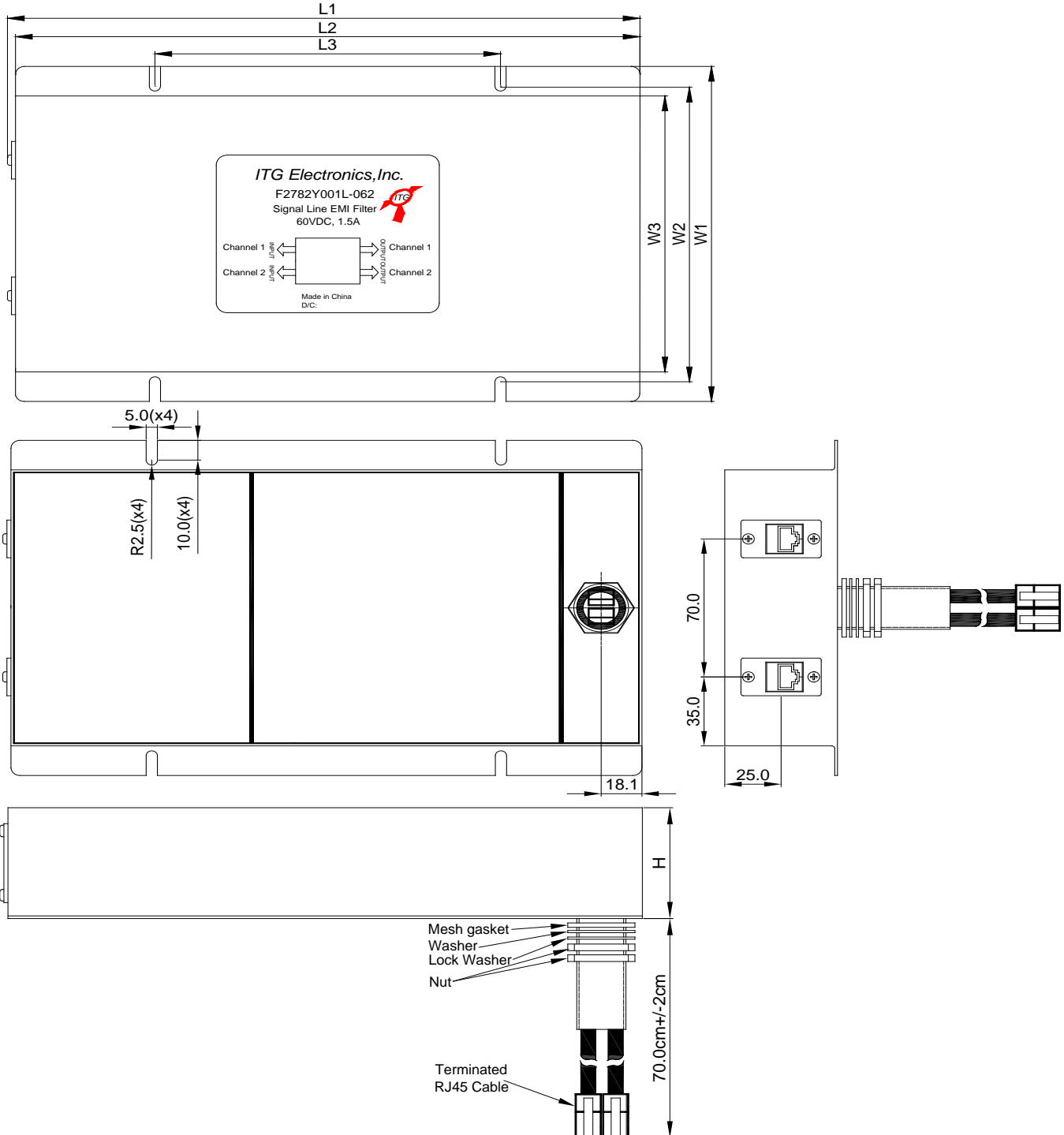
ITG Part Number	L1	L2	L3	W1	W2	W3	H
F2782Y001L-0X1	284.0	280.0	155.0	100.0	80.0	70.0	50.0



F2782Y Series



ITG Part Number	L1	L2	L3	W1	W2	W3	H
F2782Y001L-0X2	284.0	280.0	155.0	170.0	150.0	140.0	50.0



● New York 1 914 347 2474 ● Taipei 886 2 2698 8669 ● Kaohsiung 886 7 350 2275
 ● Japan 81 568 85 2830 ● Shenzhen 86 755 8418 6263 ● Shanghai 86 21 5424 5141 ● Hong Kong 852 9688 9767
 ● sales@ITG-Electronics.com ● www.ITG-Electronics.com Revision B.3, May 19, 2023

*Due to continuous product improvement, all specifications are subject to change without prior notice. Kindly contact an ITG field application engineer or a sales representative prior to purchase.