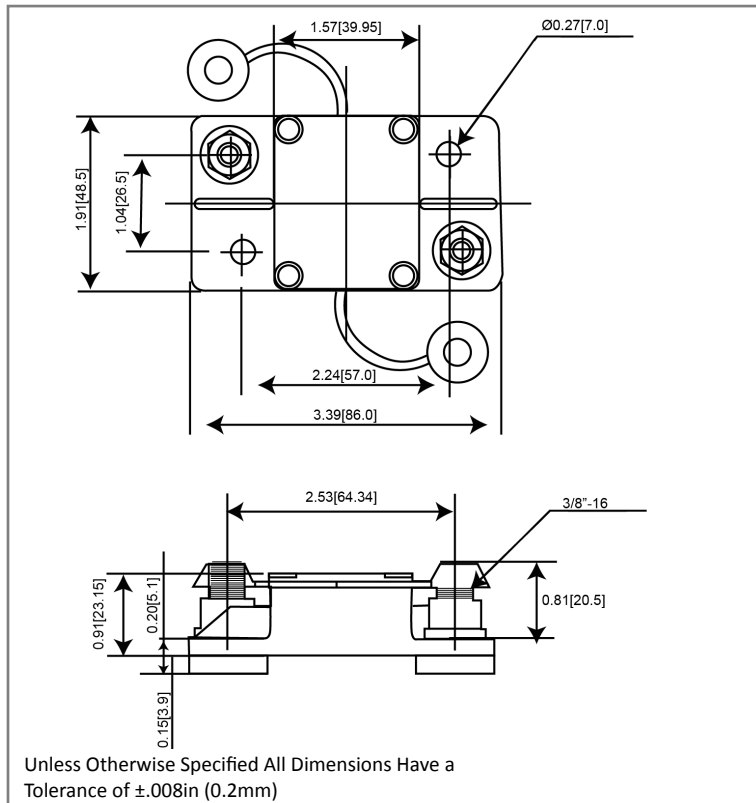


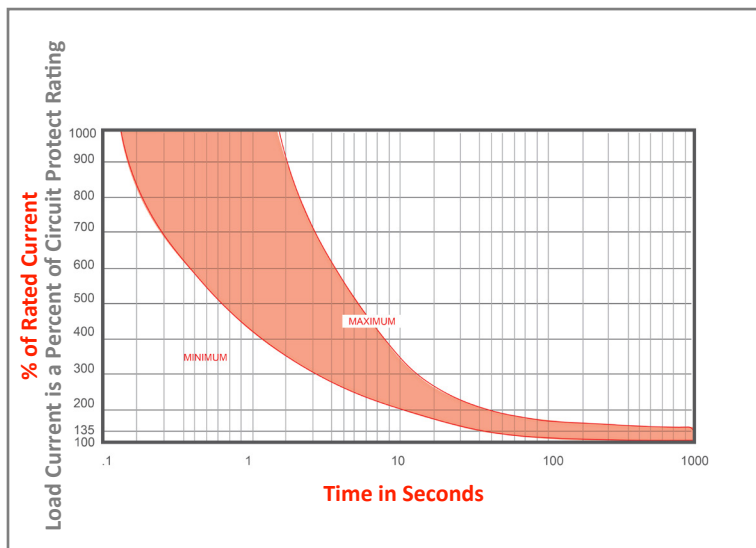
Mechanical Dimensions: Inches [mm]



Part Numbers Information

Optifuse P/N	Current
351025	25A
351030	30A
351040	40A
351050	50A
351060	60A
351070	70A
351080	80A
351090	90A
351100	100A
351120	120A
351135	135A
351140	140A
351150	150A
351175	175A
351200	200A
351250	250A
351300	300A

Time vs. Percent of Rated Current



% of Rated Current	Min Hold Time	Max Hold Time
100%	No Trip (≥ 30 Minutes)	
135%	50s	30m
200%	12s	45s
300%	3.5s	15s

Trip time: Ambient temperature 25°C ± 3°C

Electrical Specifications

Voltage Rating	48VDC (25-200A) 14VDC (250-300A)
Reset Type	Type I - Auto Reset
Interrupting Rating	3000A @ 30VDC (25A-150A), 1500A @ 30VDC (175A-300A) (ABYC E-11)
Operation Temperature	-25 °F ~ 180 °F -32 °C ~ 82 °C
Testing	SAE J1625, ABYC-E11, UL1077

Material Specifications

Heavy Duty High Amp - Waterproof Circuit Breaker	
Body Material	Thermoset Plastic (UL94V-0)
Terminals Material	Nickel Plated
Terminals Configuration	3/8"-16 Stud
Studs Torque	30.5 N.m max.
Mounting Type	Surface Mount
Ignition Protected	SAE J1171
Ingress Protection	IP67

Rev	Date of issue	Revision Notes	Designed	Approved
C	08-30-2023	added stud material, added stud torque	RC	OF