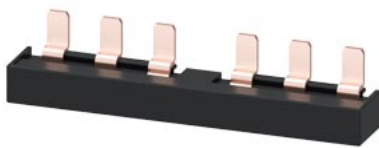


Wiring module bottom for contactor assembly with 10 mm distance between the contactors



| General technical data | | |
|------------------------|--|---|
| product brand name | | SIRIUS |
| product designation | | link module |
| design of the product | | for contactor combination S3-S3, with 10mm clearance between contactors, bottom |
| size of contactor | | S3 |

| Certificates/ approvals | |
|--------------------------|---------------------------|
| General Product Approval | Declaration of Conformity |



[Confirmation](#)



EG-Konf.



| Test Certificates | Marine / Shipping |
|-------------------|-------------------|
|-------------------|-------------------|

[Special Test Certificate](#)

[Type Test Certificates/Test Report](#)



ABS



LRS



RINA



DNV-GL

| other | Railway |
|-------|---------|
|-------|---------|

[Confirmation](#)

[Vibration and Shock](#)

Further information

Information- and Downloadcenter (Catalogs, Brochures,...)

<https://www.siemens.com/ic10>

Industry Mall (Online ordering system)

<https://mall.industry.siemens.com/mall/en/en/Catalog/product?mlfb=3RA1943-3E>

Cax online generator

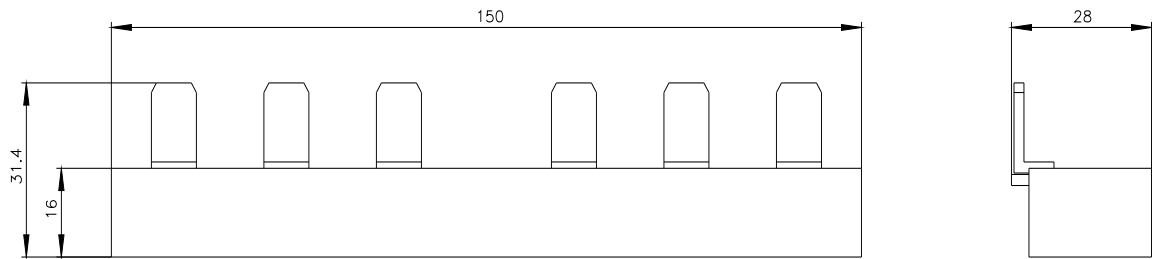
<http://support.automation.siemens.com/WW/CAXorder/default.aspx?lang=en&mlfb=3RA1943-3E>

Service&Support (Manuals, Certificates, Characteristics, FAQs,...)

<https://support.industry.siemens.com/cs/ww/en/ps/3RA1943-3E>

Image database (product images, 2D dimension drawings, 3D models, device circuit diagrams, EPLAN macros, ...)

http://www.automation.siemens.com/bilddb/cax_de.aspx?mlfb=3RA1943-3E&lang=en



last modified:

1/7/2021 