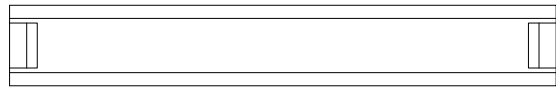
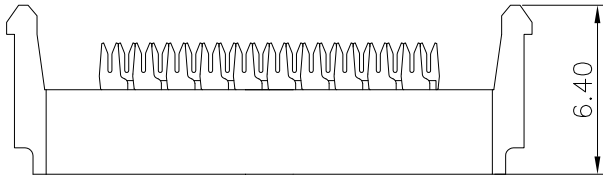
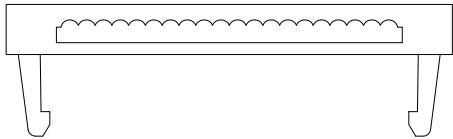
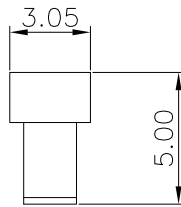
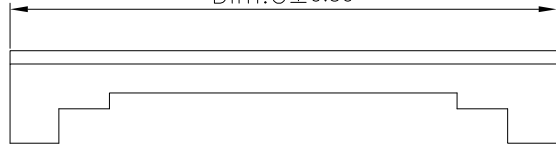


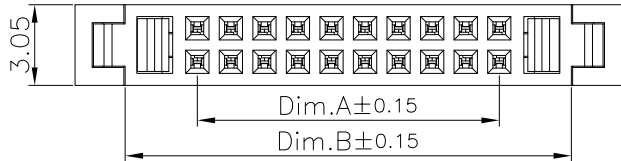
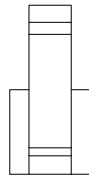
1 2 3 4 5



Dim.C±0.30



6.40



Dim.A±0.15

Dim.B±0.15

Specifications:

Current Rating: 1A AC,DC

Voltage Rating: 50V AC,DC

Contact Resistance: 20m ohm.Max

Insulation Resistance: 1,000M ohm.Min

Withstanding Voltage: 500V AC/Minute

Operating Temperature Range: -40°C ~ +105°C

Material:

Insulator: PBT(UL94V-0)

Insulator Color: Black

Contact: Phosphor Bronze

Finish: Gold Plated Over Nickel

Dimension:

| Pin | Dim.A | Dim.B | Dim.C |
|-----|-------|-------|-------|
| 6   | 2.54  | 8.00  | 11.80 |
| 8   | 3.81  | 9.27  | 13.07 |
| 10  | 5.08  | 10.54 | 14.34 |
| 12  | 6.35  | 11.81 | 15.61 |
| 14  | 7.62  | 13.08 | 16.88 |
| 16  | 8.89  | 14.35 | 18.15 |
| 18  | 10.16 | 15.62 | 19.42 |
| 20  | 11.43 | 16.89 | 20.69 |
| 24  | 13.97 | 19.43 | 23.23 |
| 26  | 15.24 | 20.70 | 24.50 |
| 28  | 16.51 | 21.97 | 25.77 |
| 30  | 17.78 | 23.24 | 27.04 |
| 34  | 20.32 | 25.78 | 29.58 |
| 40  | 24.13 | 29.59 | 33.39 |
| 44  | 26.67 | 32.13 | 35.93 |
| 50  | 30.48 | 35.94 | 39.74 |

RoHS Compliant

|     |             |      |    |
|-----|-------------|------|----|
|     |             |      |    |
|     |             |      |    |
|     |             |      |    |
|     |             |      |    |
|     | 05-FEB-2020 |      |    |
| REV | DATE        | FILE | BY |

DRAWN:  
Jerry

CHECKED:

APPROVAL:  
Rory

GENERAL TOLERANCE:  
.X=±0.20  
.XX=±0.15

UNIT: MM

SCALE:1:1

SHEET: 1 / 2

PROJECTION:

**CnC Tech**  
Industrial Cable and Connector Technology

DESCRIPTION: 1.27x1.27mm Flat Cable IDC Socket With Strain Relief

PART NO: 3230-XX-0104-00

SIZE  
A4

A  
B  
C  
D