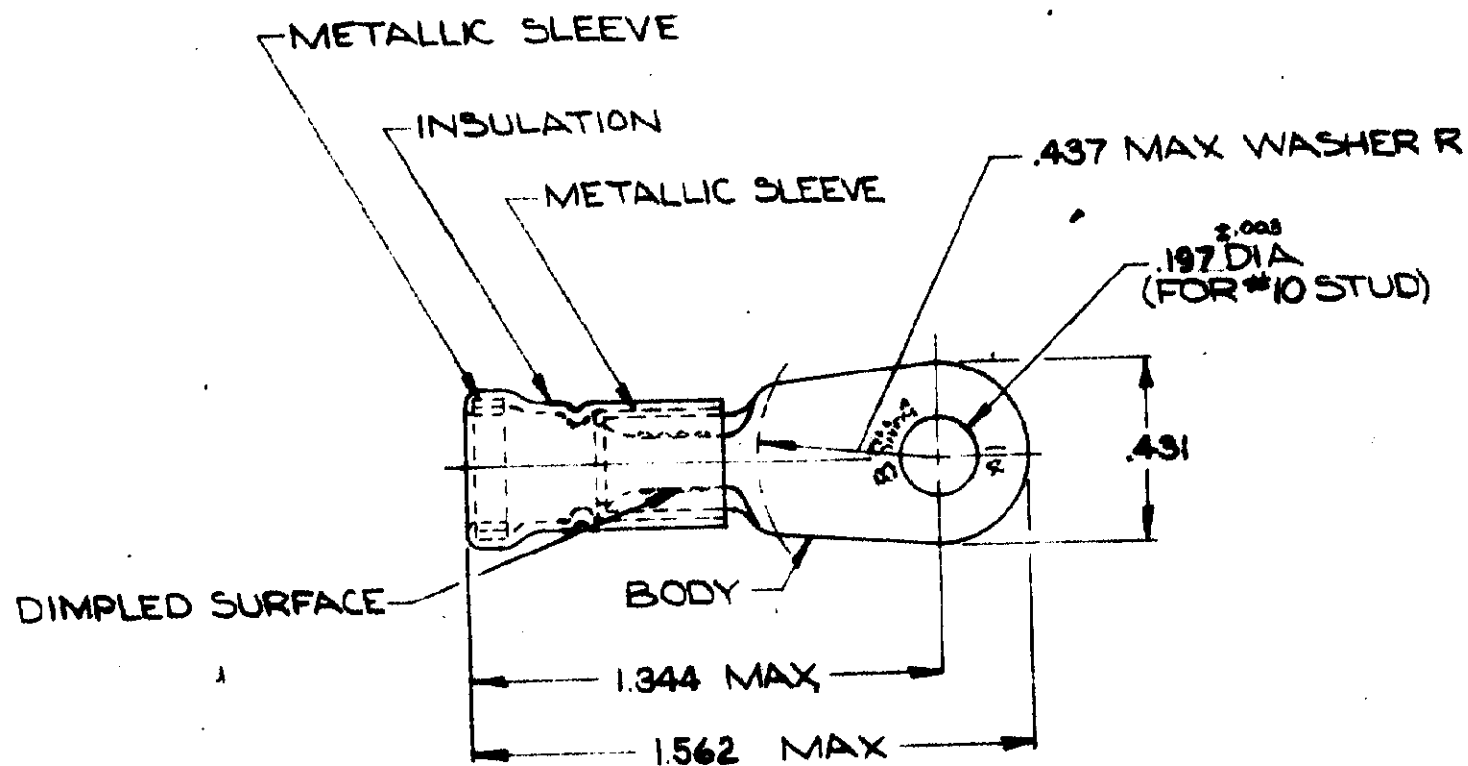


DRAWING MADE IN AMERICAN PROJECTION

© 1953 BY AMP INCORPORATED. ALL RIGHTS RESERVED. AMP PRODUCTS COVERED BY PATENTS AND/OR PATENTS PENDING.

REVISIONS				
ZONE	LTR	DESCRIPTION	DATE	APPROVED
E		REDRAWN & REVISED PG5563	1-6-70	JM
F		INACTIVATED 2-322128-1 P-7034	6-7-73	JM
G		ADDED 2-322128-2 P-7000	2-12-77	ZAB
H		REV. PER P-8347	REB. 4/1/77	JM
J		OBSOLETE 2-1 PER P.9222	DOT 3-15-82	DJM
K		REV G-4680	THS 5-9-88	JT



TONGUE MATERIAL THICKNESS = .040 ±.003
FOR .298 MAX WIRE INS DIA

TABLE I

1	WIRE TERMINAL	SEE TABLE II	BODY: COPPER (QG-C-576)	
			FINISH: (SEE TABLE II)	
			INSULATION: PVC COLOR: RED	
			METALLIC SLEEVE: COPPER (QG-C-576)	
		METALLIC BAND: STEEL QG-S-698 (ASTM A109)		
		MATERIAL & FINISH		
QTY	DESCRIPTION	PART NO.		
UNLESS OTHERWISE SPECIFIED DIMENSIONS ARE IN INCHES TOLERANCES ON: DECIMALS ±.008 ANGLES ± 5°		CONTRACT NO.	AMP INCORPORATED HARRISBURG, PENNSYLVANIA	
		DR. Wayne Mullins 11-12-69	NAME WIRE TERMINAL AMPLI-BOND - RING TONGUE WIRE SIZE: 8	
		CHK. M. Encarnacion 1-6-70	SIZE B CODE IDENT NO. 00779 NUMBER 322128	
		APPD. Swahel 1-7-70	SCALE NTS SHEET 1 OF 1	
		DESIGN APPD. M. Encarnacion 1-7-70		
		OTHER APPD.		
SEE TABLE I.				

TABLE II

2-322128-1	GOLD PLATED (MIL-G-45204) TYPE II .00005 MIN. EXT. THK. OVER NICKEL PL. (QG-N-290) .00003 MIN. EXT. THK.	—	OBSOLETE
322128	TIN PLATED (MIL-T-10727)	2-322128-2	
PART NO	FINISH	PART NO ON TAPE	

CUSTOMER DRAWING