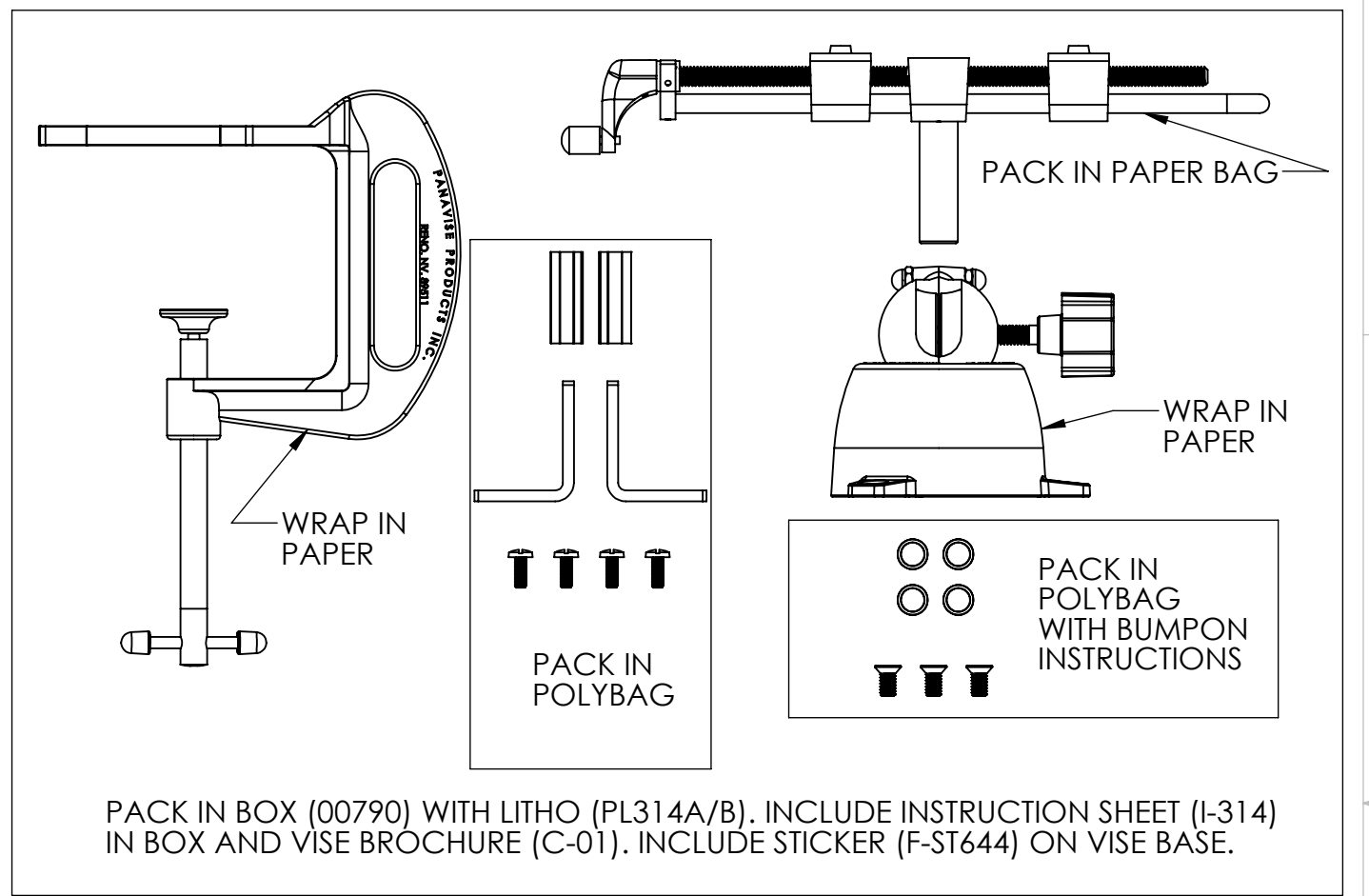
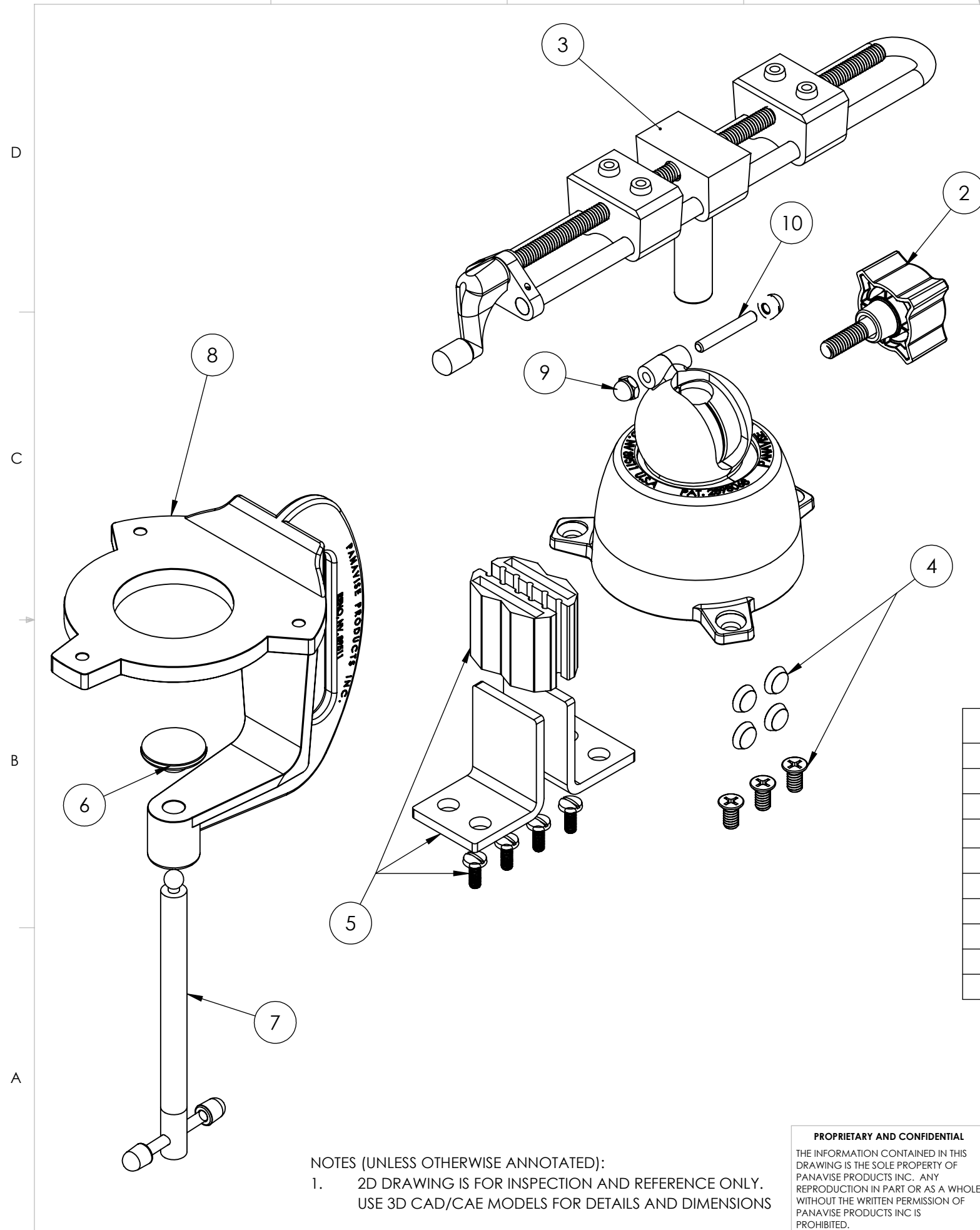


8 7 6 5 4 3 2 1

REVISIONS				
ZONE	REV.	DESCRIPTION	DATE	APPROVED
	A	RELEASE	12/30/2020	



ITEM NO.	PART NUMBER	DESCRIPTION	QTY.
1	S300-110	300 BASE ASSEMBLED AND PAINTED	1
2	K51618-125S4	Knob, Vise 5/16-18 Threads	1
3	S376-150	SELF CENTERING, EXTRA WIDE OPENING HEAD	1
4	SBP4-SCR3	4 Bumpons 3 Screw Kit	1
5	S376-920	376 JAW KIT 2 JAW PLATES 2 JAW PADS	1
6	S311-930	LEVELING BUTTON TUMBLED (311)	1
7	S311-920	311 ADJUSTING SCREW COMPLETE WITH LEVER ROD ENDS	1
8	S311-100	BENCH CLAMP BASE MOUNT, PAINTED & READY TO ASSEMBLE	1
9	N1032AC-R	NUT, ACORN 10-32 X 3/8", NICKEL PLATE	2
10	T1032-131AT	STUD, 10-32-2A X 1-5/16" ALL THREAD	1

NOTES (UNLESS OTHERWISE ANNOTATED):
 1. 2D DRAWING IS FOR INSPECTION AND REFERENCE ONLY. USE 3D CAD/CAE MODELS FOR DETAILS AND DIMENSIONS

PROPRIETARY AND CONFIDENTIAL
 THE INFORMATION CONTAINED IN THIS DRAWING IS THE SOLE PROPERTY OF PANAVISE PRODUCTS INC. ANY REPRODUCTION IN PART OR AS A WHOLE WITHOUT THE WRITTEN PERMISSION OF PANAVISE PRODUCTS INC IS PROHIBITED.

UNLESS OTHERWISE SPECIFIED:		NAME	DATE	 7540 Colbert Drive, Reno, Nevada 89511-1225 Phone (775) 850-2900 Fax (775) 850-2929 TITLE: HD CLAMPING MULTI-PURPOSE VISE
DIMENSIONS ARE IN INCHES		DRAWN		
TOLERANCES:		CHECKED		
FRACTIONAL ± 1/64		ENG APPR.		
ANGULAR:		MFG APPR.		
MACH ± 1/2° BEND ±		Q.A.		
TWO PLACE DECIMAL: ±.01		COMMENTS:		
THREE PLACE DECIMAL: ±.005				
INTERPRET GEOMETRIC TOLERANCING PER: ASME 14.5M-2009 MATERIAL				
NEXT ASSY	USED ON	FINISH		
APPLICATION		DO NOT SCALE DRAWING		
SIZE	DWG. NO.	REV		
B	314	A		
SCALE: 1:2	WEIGHT:	SHEET 1 OF 1		

8 7 6 5 4 3 2 1