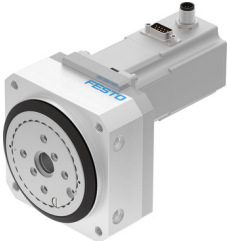


# Rotary actuator ERMO-32-ST-E

Part number: 3008528

**FESTO**



## Data sheet

Feature	Value
Size	32
Structural design	Electromechanical rotary actuator with integrated gearbox
Mounting position	Any
Type of mounting	With internal thread
Rotation angle	Infinite
Gear ratio	7:1
Nominal torque	5 Nm
Nominal rotary speed	50 1/min
Max. rotational speed	100 1/min
Torsional backlash	0.2 deg
Repetition accuracy	±0.1 °
Max. axial force	450 N
Max. radial force	550 N
Permissible mass moment of inertia	0.0164 kgm <sup>2</sup>
Product weight	2200 g
Step angle with full step	1.8 deg
Step angle tolerance	±5%
Mass moment of inertia JO	0.39 kgcm <sup>2</sup>
Duty cycle	100%
Nominal operating voltage DC	24 V
Motor nominal current	4.2 A
Insulation protection class	B
Motor type	Stepper motor
Rotor position sensor	Incremental encoder
Rotor position sensor interface	RS422 TTL A/B channels + zero index
Rotor position sensor measuring principle	Optical
Electrical connection technology	Plug
CE marking (see declaration of conformity)	As per EU EMC directive As per EU RoHS directive
UKCA marking (see declaration of conformity)	To UK instructions for EMC To UK RoHS instructions
Interface code, base	E8-55
Degree of protection	IP40
Ambient temperature	0 °C ... 50 °C
Relative air humidity	0 - 85 % Non-condensing

Feature	Value
LABS (PWIS) conformity	VDMA24364 zone III
Note on materials	RoHS-compliant
Material of flange	Wrought aluminum alloy Anodized
Housing material	Wrought aluminum alloy Anodized