

# Data sheet

## 28775.4 KDS-RGA M40 BK



Thread and locking adapter, Material: Polyamide PA 6.6, glass-fibre reinforced, Colour: Black

RAL: 9005

### Business data

Article number	28775.4
Article name	KDS-RGA M40 BK
GTIN (EAN)	4044211234553
Packaging unit	5
Quantity unit	PC
Weight per piece (not including packaging)	15.5 g
Weight per piece (including packaging)	16 g
Unit of weight	G
Customs number	39259020
Country of origin	DE
Product description	Cable Entry
Colour	Black

### Technical data

#### Dimensions

Length	70 mm
Length of wall cutout	40.4 mm
Width	70 mm
Width of wall cutout	40.4 mm
Height	22.1 mm
Installation height	14.9 mm

#### Thread

Thread type	Metric
Thread size	40 mm
Thread pitch	1.5 mm
Thread length (L)	14.9 mm

#### Materials

Material	Polyamide 6.6
Glass-fibre reinforced	✓
Flammability class UL 94	V-0
Working temperature, min.	-40 °C
Working temperature, max.	120 °C
Halogen-free	✓
Silicone-free	✓

#### Further technical data

Mounting type	Screws
Degree of protection	IP66
NEMA Type	1, 12, 4x (indoor use only)
Torque for the locknut	7 Nm

#### Environmental Product Compliance

REACH Conform	yes
REACH Reference date	2023-06-14
REACH Candidate Substance Note	No
RoHS Conform	yes

# Data sheet

## 28775.4 KDS-RGA M40 BK



### Approvals

#### cUL Recognized

cUL approval	C22.2 No. 14-18
cUL File Number	E489821
cUL Recognized	1

#### UL Recognized

UL approval	UL 508A
UL File Number	E489821
UL Recognized	1
UL Type Rating	1, 12, 4x (indoor use only)

---

### Media

---



**28775.4 KDS-RGA M40 BK**

---

**Accessories**

---

**Locknut**

---



Hex. nut, Thread type: metric, Thread size: 40 mm, Material: Polyamide, Colour: Light grey

Article number	Article name	GTIN (EAN)	Packaging unit
<u>4145.2</u>	S/M 40x1,5 GR	4044211114268	50

---

**Locknuts**

---



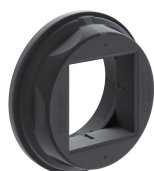
Hex. nut, Thread type: metric, Thread size: 40 mm, Material: Polyamide, Colour: Light grey

Article number	Article name	GTIN (EAN)	Packaging unit
<u>4145.2</u>	S/M 40x1,5 GR	4044211114268	50

---

**##INVERSE##CONTA-CABLE**

---



Round cable entry, Material: polyamide PA 6.6, glass-fibre reinforced | TPE, Colour: Black

Article number	Article name	GTIN (EAN)	Packaging unit
<u>28774.4</u>	KDS-R 40-63 BK	4044211234546	5 ST

---

**Separable locknut**

---



Separated counter nut, Thread type: metric, Material: PA 6.6, Colour: Black

Article number	Article name	GTIN (EAN)	Packaging unit
<u>28619.4</u>	KDS-GM 40 BK	4044211209025	5 ST

---

**Sheet-metal puncher**

---



-

Article number	Article name	GTIN (EAN)	Packaging unit
<u>28757.0</u>	BL-VA KDS-KV M40	4044211234478	1 ST

-

Article number	Article name	GTIN (EAN)	Packaging unit
<u>28749.0</u>	BL KDS-KV M40	4044211222024	1 ST