

Data sheet

28774.4 KDS-R 40-63 BK



Round cable entry, Material: polyamide PA 6.6, glass-fibre reinforced | TPE, Colour: Black

RAL: 9005

Business data

Article number	28774.4
Article name	KDS-R 40-63 BK
GTIN (EAN)	4044211234546
Packaging unit	5
Quantity unit	PC
Weight per piece (not including packaging)	30.9 g
Weight per piece (including packaging)	37.4 g
Unit of weight	G
Customs number	39259020
Country of origin	DE
Product description	Cable Entry
Colour	Black

Technical data

Dimensions

Length	80 mm
Width	80 mm
Height	21.5 mm
Installation height	21.5 mm

Thread

Thread type	Metric
Thread size	70 mm
Thread pitch	1.5 mm
Thread length (L)	7.2 mm

Materials

Material	Polyamide 6.6
Glass-fibre reinforced	✓
Flammability class UL 94	V-0
Working temperature, min.	-40 °C
Working temperature, max.	120 °C
Sealing material	TPE
Halogen-free	✓
Silicone-free	✓

Further technical data

Mounting type	Screws
Degree of protection	IP66
Spanner width (AF)	65 mm
NEMA Type	1, 12, 4x (indoor use only)

Environmental Product Compliance

REACH Conform	yes
REACH Reference date	2023-06-14
REACH Candidate Substance Note	No
RoHS Conform	yes

Approvals

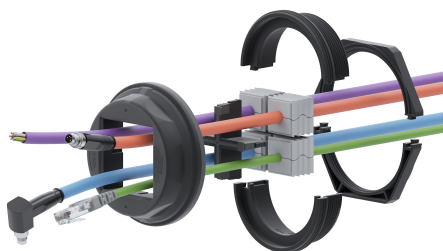
cUL Recognized

cUL approval	C22.2 No. 14-18
cUL File Number	E489821
cUL Recognized	1

UL Recognized

UL approval	UL 508A
UL File Number	E489821
UL Recognized	1
UL Type Rating	1, 12, 4x (indoor use only)

Media



Data sheet

28774.4 KDS-R 40-63 BK



Accessories

Inlays



Cable entry, Inlay, Mounting type: Plug in, IP 66, Colour: Black

Article number	Article name	GTIN (EAN)	Packaging unit
28516.4	KDS-Inlay 1 BK	4044211210847	5 ST



Cable entry, Inlay, Mounting type: Plug in, IP 66, Colour: Black

Article number	Article name	GTIN (EAN)	Packaging unit
28517.4	KDS-Inlay 2 BK	4044211210854	5 ST



Cable entry, Inlay, Mounting type: Plug in, IP 66, Colour: Black

Article number	Article name	GTIN (EAN)	Packaging unit
28518.4	KDS-Inlay 4 BK	4044211210861	5 ST

Gewinde- und Verriegelungsadapter



Thread and locking adapter, Material: Polyamide PA 6.6, glass-fibre reinforced, Colour: Black

Article number	Article name	GTIN (EAN)	Packaging unit
<u>28776.4</u>	KDS-RGA M50 BK	4044211234560	5 ST



Thread and locking adapter, Material: Polyamide PA 6.6, glass-fibre reinforced, Colour: Black

Article number	Article name	GTIN (EAN)	Packaging unit
<u>28775.4</u>	KDS-RGA M40 BK	4044211234553	5 ST



Thread and locking adapter, Material: Polyamide PA 6.6, glass-fibre reinforced, Colour: Black

Article number	Article name	GTIN (EAN)	Packaging unit
<u>28777.4</u>	KDS-RGA M63 BK	4044211234577	5 ST

Separable locknut



Separated counter nut, Thread type: metric, Material: PA 6.6, Colour: Black

Article number	Article name	GTIN (EAN)	Packaging unit
<u>28619.4</u>	KDS-GM 40 BK	4044211209025	5 ST



Separated counter nut, Thread type: metric, Material: PA 6.6, Colour: Black

Article number	Article name	GTIN (EAN)	Packaging unit
<u>28620.4</u>	KDS-GM 50 BK	4044211209032	5 ST



Separated counter nut, Thread type: metric, Material: PA 6.6, Colour: Black

Article number	Article name	GTIN (EAN)	Packaging unit
<u>28621.4</u>	KDS-GM 63 BK	4044211209049	5 ST

Flat cable seals



Seal, Mounting type: Plug in, Length 42.7 mm, Width: 20.3 mm, IP 66, Colour: Grey

Article number	Article name	GTIN (EAN)	Packaging unit
<u>28717.6</u>	KDS-DE-FB1/E GR	4044211221102	5 ST



Seal, Mounting type: Plug in, Length 42.7 mm, Width: 20.3 mm, IP 66, Colour: Grey

Article number	Article name	GTIN (EAN)	Packaging unit
<u>28718.6</u>	KDS-DE-FB1/F GR	4044211221119	5 ST



Seal dummy, Mounting type: Plug in, Length 42.7 mm, Width: 20.3 mm, IP 66, Colour: Grey

Article number	Article name	GTIN (EAN)	Packaging unit
<u>28713.6</u>	KDS-DE-FB1/A GR	4044211221065	5 ST



Seal, Mounting type: Plug in, Length 42.7 mm, Width: 20.3 mm, IP 66, Colour: Grey

Article number	Article name	GTIN (EAN)	Packaging unit
<u>28714.6</u>	KDS-DE-FB1/B GR	4044211221072	5 ST



Seal, Mounting type: Plug in, Length 42.7 mm, Width: 20.3 mm, IP 66, Colour: Grey

Article number	Article name	GTIN (EAN)	Packaging unit
<u>28715.6</u>	KDS-DE-FB1/C GR	4044211221089	5 ST



Seal, Mounting type: Plug in, Length 42.7 mm, Width: 20.3 mm, IP 66, Colour: Grey

Article number	Article name	GTIN (EAN)	Packaging unit
<u>28716.6</u>	KDS-DE-FB1/D GR	4044211221096	5 ST

Locknuts



Hex. nut, Thread type: metric, Thread size: 40 mm, Material: Polyamide, Colour: Lightgrey

Article number	Article name	GTIN (EAN)	Packaging unit
<u>4145.2</u>	S/M 40x1,5 GR	4044211114268	50



Hex. nut, Thread type: metric, Thread size: 50 mm, Material: Polyamide, Colour: Light grey

Article number	Article name	GTIN (EAN)	Packaging unit
<u>4146.2</u>	S/M 50x1,5 GR	4044211114275	50



Hex. nut, Thread type: metric, Thread size: 63 mm, Material: Polyamide, Colour: Light grey

Article number	Article name	GTIN (EAN)	Packaging unit
<u>4147.2</u>	S/M 63x1,5 GR	4044211114282	50

Actuating tool



Using the KDS BW1 actuating tool, the seals can be conveniently mounted in and dismantled from the frame. The ergonomic grip and the special shape enable simple and precise installations, especially for cabling applications in confined spaces., Material: Polyamide

Article number	Article name	GTIN (EAN)	Packaging unit
<u>28622.0</u>	KDS BW 1	4044211216597	1 ST

Sheet-metal puncher



-

Article number	Article name	GTIN (EAN)	Packaging unit
<u>28757.0</u>	BL-VA KDS-KV M40	4044211234478	1 ST

Sheet-metal puncher

-

Article number	Article name	GTIN (EAN)	Packaging unit
<u>28749.0</u>	BL KDS-KV M40	4044211222024	1 ST

Sheet metal punch for round cutouts, Cutout diameter: 63.5 mm, Maximum wall thickness: 2.0 mm for S 235 sheet metal, Material: steel

Article number	Article name	GTIN (EAN)	Packaging unit
<u>28751.0</u>	BL KDS-KV M63	4044211222048	1 ST

Sheet metal punch for round cutouts, Cutout diameter: 50.5 mm, Maximum wall thickness: 2.0 mm for S 235 sheet metal, Material: steel

Article number	Article name	GTIN (EAN)	Packaging unit
<u>28750.0</u>	BL KDS-KV M50	4044211222031	1 ST

-

Article number	Article name	GTIN (EAN)	Packaging unit
<u>28758.0</u>	BL-VA KDS-KV M50	4044211234485	1 ST

-

Article number	Article name	GTIN (EAN)	Packaging unit
<u>28759.0</u>	BL-VA KDS-KV M63	4044211234492	1 ST

Sheet metal punch set for round cutouts, includes hydraulic hand pump, 7 X sheet metal punchers VA (M16, M20, M25, M32, M40, M50, M63), 2x pull axles, lock nut, plastic case, maximum wall thickness: 2.0 mm for stainless steel sheet, material: steel

Article number	Article name	GTIN (EAN)	Packaging unit
<u>28765.0</u>	BL-VA SET M16-M63	4044211222383	1 ST

Sheet-metal puncher

Sheet metal punch set for round cutouts, includes hydraulic hand pump, 7 X sheet metal punches (M16, M20, M25, M32, M40, M50, M63), 2x tension axles, lock nut, plastic case, maximum wall thickness: 2.0 mm for S 235 sheet metal, material: steel

Article number	Article name	GTIN (EAN)	Packaging unit
<u>28766.0</u>	BL SET M16-M63	4044211222390	1 ST