

# Data sheet

## 28772.4 KDS-RGA M25 BK



Thread and locking adapter, Material: Polyamide PA 6.6, glass-fibre reinforced, Colour: Black

**RAL:** 9005

### Business data

Article number	28772.4
Article name	KDS-RGA M25 BK
GTIN (EAN)	4044211234522
Packaging unit	5
Quantity unit	PC
Weight per piece (not including packaging)	7.6 g
Weight per piece (including packaging)	8.4 g
Unit of weight	G
Customs number	39259020
Country of origin	DE
Product description	Cable Entry
Colour	Black

### Technical data

#### Dimensions

Length	38 mm
Length of wall cutout	25.3 mm
Width	38 mm
Width of wall cutout	25.3 mm
Height	22.1 mm
Installation height	14.9 mm

#### Thread

Thread type	Metric
Thread size	25 mm
Thread pitch	1.5 mm
Thread length (L)	14.9 mm

#### Materials

Material	Polyamide 6.6
Glass-fibre reinforced	✓
Flammability class UL 94	V-0
Working temperature, min.	-40 °C
Working temperature, max.	120 °C
Halogen-free	✓
Silicone-free	✓

#### Further technical data

Mounting type	Screws
Degree of protection	IP66
NEMA Type	1, 12, 4x (indoor use only)
Torque for the locknut	3 Nm

#### Environmental Product Compliance

REACH Conform	yes
REACH Reference date	2023-06-14
REACH Candidate Substance Note	No
RoHS Conform	yes

Approvals

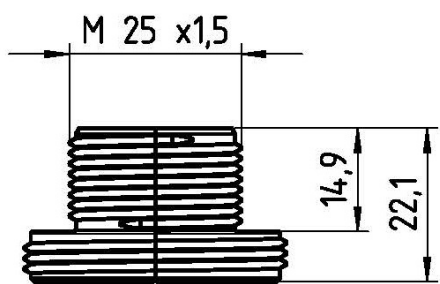
cUL Recognized

cUL approval	C22.2 No. 14-18
cUL File Number	E489821
cUL Recognized	1

UL Recognized

UL approval	UL 508A
UL File Number	E489821
UL Recognized	1
UL Type Rating	1, 12, 4x (indoor use only)

Media



Accessories

Locknut



Hex. nut, Thread type: metric, Thread size: 25 mm, Material: Polyamide, Colour: Light grey

Article number	Article name	GTIN (EAN)	Packaging unit
<u>4143.2</u>	S/M 25x1,5 GR	4044211114244	100

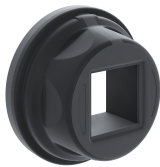
Locknuts



Hex. nut, Thread type: metric, Thread size: 25 mm, Material: Polyamide, Colour: Light grey

Article number	Article name	GTIN (EAN)	Packaging unit
<u>4143.2</u>	S/M 25x1,5 GR	4044211114244	100

##INVERSE##CONTA-CABLE



Round cable entry, Material: polyamide PA 6.6, glass-fibre reinforced | TPE, Colour: Black

Article number	Article name	GTIN (EAN)	Packaging unit
<u>28770.4</u>	KDS-R 20-32 BK	4044211234508	5 ST

Sheet-metal puncher

-

Article number	Article name	GTIN (EAN)	Packaging unit
<u>28755.0</u>	BL-VA KDS-KV M25	4044211234454	1 ST

Sheet-metal puncher



Sheet metal punch for round cutouts, Cutout diameter: 25.4 mm, Maximum wallthickness: 2.0 mm for S 235 sheet metal, Material: steel

Article number	Article name	GTIN (EAN)	Packaging unit
<u>28747.0</u>	BL KDS-KV M25	4044211222000	1 ST