



Cable entry with membrane for unassembled cables, Mounting type: Screw, Length: 147 mm, Width: 58 mm, IP66, Colour: Black

RAL: 9005

Kaufmännische Daten

Artikelnummer	28637.4
Artikelbezeichnung	KES 32/24 BK
GTIN (EAN)	4044211220013
Packaging unit	10
Quantity unit	PC
Weight per piece (not including packaging)	71.4 g
Weight per piece (including packaging)	71.4 g
Unit of weight	G
Customs number	39259020
Country of origin	DE
Prio-Article	28637.6
Product description	Cable Entry

### Technische Daten

#### Dimensions

Length	149.6 mm
Length of wall cutout	112 mm
Width	58 mm
Width of wall cutout	36 mm
Installation height	14.5 mm
Diameter of the screw holes	5.5 mm

#### Materials

Material	Polyamide 6.6
Glass-fibre reinforced	✓
Flammability class UL 94	V-0
Working temperature, min.	-40 °C
Working temperature, max.	90 °C
Sealing material	TPE
Halogen-free	✓
Silicone-free	✓

#### Further technical data

Mounting type	Screws
Degree of protection	IP66
NEMA Type	1, 12, 4x (indoor use only)
Number of screw holes	4
Fixing screws	M5 (ISO 4762 / DIN 912)
Torque of the fixing screws	3 Nm
Number of wires	32
Number of cables for cable diameters 3.2 - 6.3 mm	32

Zulassungen

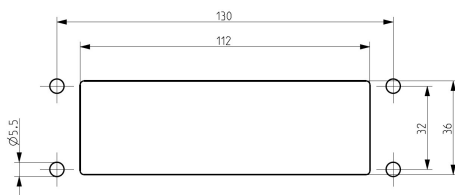
cUL Recognized

cUL approval	C22.2 No. 14-18
cUL File Number	E489821
cUL Recognized	1

UL Recognized

UL approval	UL 508A
UL File Number	E489821
UL Recognized	1
UL Type Rating	1, 12, 4x (indoor use only)

### Medien



Zubehör

EMC brackets



Shield-connection rail enabling mounting of shield connection clips directly on cable entry system KDS and KES, Mounting type: Screw, Length: 35,3 mm, Width: 140 mm, Height: 16 mm, Profile: 10x3 mm

Artikelnummer	Artikelbezeichnung	GTIN (EAN)	VPE
<u>28626.0</u>	KDS-EMV-SAB 10/24	4044211219659	1 ST

Sheet-metal puncher



Sheet metal puncher for rectangular openings, Dimensions opening: 112 x 36 mm, Maximum wall thickness: 2.0 mm for stainless steel sheet, Material: steel

Artikelnummer	Artikelbezeichnung	GTIN (EAN)	VPE
<u>28752.0</u>	BL-VA KES	4044211221935	1 ST



Sheet metal puncher for rectangular openings, Dimensions opening: 112 x 36 mm, Maximum wall thickness: 2.0 mm for S 235 sheet, Material: steel

Artikelnummer	Artikelbezeichnung	GTIN (EAN)	VPE
<u>28744.0</u>	BL KES	4044211221942	1 ST