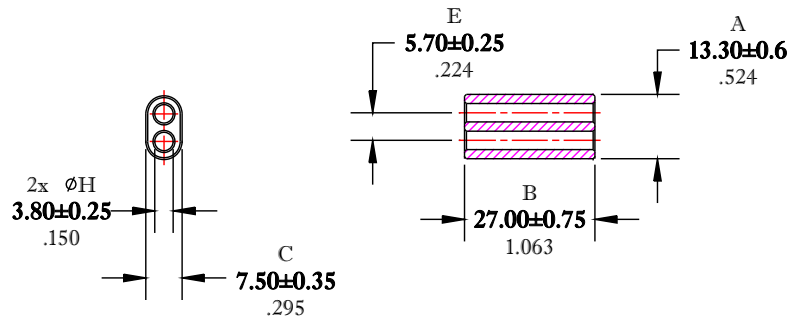


** Not all features are shown in this drawing. For more detailed information, please contact your Fair-Rite representative.

UNCONTROLLED ~CATALOG~ DRAWING

SIZE	PART NO.	REV.
B	2861006802	~



DIMENSIONS
BOLD NUMBERS ARE IN MILLIMETERS
 LIGHT NUMBERS ARE IN INCHES

ELECTRICAL SPECIFICATIONS			
AL (nH) @ 10 kHz	$\tan \delta / \mu_i$ @ 1 MHz	$\tan \delta / \mu_i$ @ 10 MHz	Impedance (ohms) @ 250 MHz
600 Min.	$\leq 75 \times 10^{-6}$	$\leq 350 \times 10^{-6}$	340 Min.
N=5T-2H #26 AWG			N=1T-2H #22 AWG, WL=3"

NOTES:
 1 - BURNISH TO BREAK SHARP EDGES.

FR# 61

FAIR-RITE PRODUCTS CORP.				
TITLE				
MULTI-APERTURE CORE				
DRAWN BY	DATE	SIZE	PART NO.	REV.
D. FOOTE	8/2/2019	B	2861006802	~
CHKD BY				
APPRVD BY		SCALE	NONE	SHEET 1 of 1