



Seal, Mounting type: Plug in, Length x width: 20.3 mm, Max. cable diameter: 14 mm, IP 66, Colour: Grey

RAL: Ähnlich 7035

Kaufmännische Daten

Artikelnummer	28574.6
Artikelbezeichnung	KDS-DE 13-14 GR
GTIN (EAN)	4044211215231
Packaging unit	10
Quantity unit	PC
Weight per piece (not including packaging)	4.5 g
Weight per piece (including packaging)	4.9 g
Unit of weight	G
Customs number	39259020
Country of origin	DE
Product description	Sealing Element
Colour	Grey

Technische Daten

Dimensions

Length	20.3 mm
Width	20.3 mm
Height	17.7 mm

Materials

Material	TPE
Flammability class UL 94	V-0
Working temperature, min.	-40 °C
Working temperature, max.	90 °C
Halogen-free	✓
Silicone-free	✓

Further technical data

Mounting type	Plug in
Degree of protection	IP66
Strain relief	✓
Cable diameter, min.	13 mm
Cable diameter, max.	14 mm
NEMA Type	1, 12, 4x (indoor use only)
Number of wires	1

Environmental Product Compliance

REACH Conform	yes
REACH Reference date	2023-06-14
REACH Candidate Substance Note	No
RoHS Conform	yes

Zulassungen

Standards and regulations

Standards / specifications	Strain relief complying with DIN EN 62444
----------------------------	---

cUL Recognized

cUL approval	C22.2 No. 14-18
--------------	-----------------

cUL File Number	E489821
-----------------	---------

cUL Recognized	1
----------------	---

UL Recognized

UL approval	UL 508A
-------------	---------

UL File Number	E489821
----------------	---------

UL Recognized	1
---------------	---

UL Type Rating	1, 12, 4x (indoor use only)
----------------	-----------------------------

German Lloyd approval

DNV GL Certificate number	TAE00003V7
---------------------------	------------

DNV GL Location Classes	Temperature: -40°C to 120°C, Humidity: B, Vibration: B, Ingress protection: IP66
-------------------------	--

DNV GL approval granted	1
-------------------------	---

Medien



Zubehör

Inlays



Cable entry, Inlay, Mounting type: Plug in, IP 66, Colour: Black

Artikelnummer	Artikelbezeichnung	GTIN (EAN)	VPE
28516.4	KDS-Inlay 1 BK	4044211210847	5 ST



Cable entry, Inlay, Mounting type: Plug in, IP 66, Colour: Black

Artikelnummer	Artikelbezeichnung	GTIN (EAN)	VPE
28517.4	KDS-Inlay 2 BK	4044211210854	5 ST



Cable entry, Inlay, Mounting type: Plug in, IP 66, Colour: Black

Artikelnummer	Artikelbezeichnung	GTIN (EAN)	VPE
28518.4	KDS-Inlay 4 BK	4044211210861	5 ST



Cable entry, Inlay, Mounting type: Plug in, IP 66, Colour: Black

Artikelnummer	Artikelbezeichnung	GTIN (EAN)	VPE
28519.4	KDS-Inlay 6 BK	4044211210014	5 ST

Screw frame



Cable entry with foamed-in seal, Mounting type: Screws, Length: 153 mm, Width: 70 mm, IP 66, Colour: Black

Artikelnummer	Artikelbezeichnung	GTIN (EAN)	VPE
28504.4	KDS-SR 10/24 BK	4044211210809	1 ST



Cable entry with foamed-in seal, Mounting type: Screws, Length: 106 mm, Width: 70 mm, IP 66, Colour: Black

Artikelnummer	Artikelbezeichnung	GTIN (EAN)	VPE
28500.4	KDS-SR 6/10 BK	4044211210021	1 ST

28574.6 KDS-DE 13-14 GR

Screw frame



Cable entry with foamed-in seal, Mounting type: Screws, Length: 126 mm, Width: 70 mm, IP 66, Colour: Black

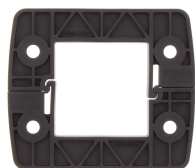
Artikelnummer	Artikelbezeichnung	GTIN (EAN)	VPE
<u>28502.4</u>	KDS-SR 8/16 BK	4044211210786	1 ST



Cable entry with foamed-in seal, Mounting type: Screws, Length: 81 mm, Width: 70 mm, IP 66, Colour: Black

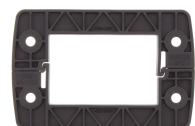
Artikelnummer	Artikelbezeichnung	GTIN (EAN)	VPE
<u>28506.4</u>	KDS-SR 1-4 BK	4044211210823	1 ST

Locking frame



Inner locking frame, Length: 80 mm, Height: 11.5 mm, Colour: Black

Artikelnummer	Artikelbezeichnung	GTIN (EAN)	VPE
<u>28507.4</u>	KDS-IVR 1-4 BK	4044211210830	10 ST



Inner locking frame, Length: 105 mm, Height: 11.5 mm, Colour: Black

Artikelnummer	Artikelbezeichnung	GTIN (EAN)	VPE
<u>28501.4</u>	KDS-IVR 6/10 BK	4044211210779	10 ST



Inner locking frame, Length: 125 mm, Height: 11.5 mm, Colour: Black

Artikelnummer	Artikelbezeichnung	GTIN (EAN)	VPE
<u>28503.4</u>	KDS-IVR 8/16 BK	4044211210793	10 ST



Inner locking frame, Length: 152 mm, Height: 11.5 mm, Colour: Black

Artikelnummer	Artikelbezeichnung	GTIN (EAN)	VPE
<u>28505.4</u>	KDS-IVR 10/24 BK	4044211210816	10 ST

##INVERSE##CONTA-CABLE

28574.6 KDS-DE 13-14 GR



Split cable gland including counter nut, Thread type: metric, Material: PA 6.6, Protection: IP 66, Colour: Black

Artikelnummer	Artikelbezeichnung	GTIN (EAN)	VPE
<u>28612.4</u>	KDS-KV M32 BK	4044211208950	10 ST



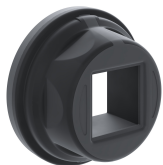
Split cable gland including counter nut, Thread type: metric, Material: PA 6.6, Protection: IP 66, Colour: Black

Artikelnummer	Artikelbezeichnung	GTIN (EAN)	VPE
<u>28612.4</u>	KDS-KV M32 BK	4044211208950	10 ST



Cable entry flange plate with foamed-in frame gasket, Mounting type: Screw, Length: 165 mm, Width: 174 mm, IP66, Colour: Black

Artikelnummer	Artikelbezeichnung	GTIN (EAN)	VPE
<u>28661.4</u>	KDS-FP 3x10/24 BK	4044211220365	1 ST



Round cable entry, Material: polyamide PA 6.6, glass-fibre reinforced | TPE, Colour: Black

Artikelnummer	Artikelbezeichnung	GTIN (EAN)	VPE
<u>28770.4</u>	KDS-R 20-32 BK	4044211234508	5 ST



Thread and locking adapter, Material: Polyamide PA 6.6, glass-fibre reinforced, Colour: Black

Artikelnummer	Artikelbezeichnung	GTIN (EAN)	VPE
<u>28772.4</u>	KDS-RGA M25 BK	4044211234522	5 ST



Cable entry with moulded-in seal, Mounting type: Screws, Length: 120 mm, Width: 39 mm, IP 66, Colour: Black

Artikelnummer	Artikelbezeichnung	GTIN (EAN)	VPE
<u>28706.4</u>	KDS-SR-FB3/D BK	4044211225537	10 ST



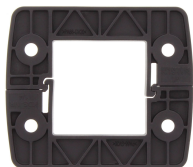
Round cable entry, Material: polyamide PA 6.6, glass-fibre reinforced | TPE, Colour: Black

Artikelnummer	Artikelbezeichnung	GTIN (EAN)	VPE
<u>28774.4</u>	KDS-R 40-63 BK	4044211234546	5 ST



Thread and locking adapter, Material: Polyamide PA 6.6, glass-fibre reinforced, Colour: Black

Artikelnummer	Artikelbezeichnung	GTIN (EAN)	VPE
<u>28777.4</u>	KDS-RGA M63 BK	4044211234577	5 ST



Inner locking frame, Length: 80 mm, Height: 11.5 mm, Colour: Black

Artikelnummer	Artikelbezeichnung	GTIN (EAN)	VPE
<u>28507.4</u>	KDS-IVR 1-4 BK	4044211210830	10 ST



Cable entry set, IP66, Consisting of: 1 x KDS-SR 6/10, 1 x KDS-Inlay 2, 1 x KDS-Inlay 6

Artikelnummer	Artikelbezeichnung	GTIN (EAN)	VPE
<u>28603.4</u>	KDS-Set 6/10 BK	4044211216191	1 ST



Cable entry with foamed-in seal, Mounting type: Screws, Length: 126 mm, Width: 70 mm, IP 66, Colour: Black

Artikelnummer	Artikelbezeichnung	GTIN (EAN)	VPE
<u>28502.4</u>	KDS-SR 8/16 BK	4044211210786	1 ST



Inner locking frame, Length: 125 mm, Height: 11.5 mm, Colour: Black

Artikelnummer	Artikelbezeichnung	GTIN (EAN)	VPE
<u>28503.4</u>	KDS-IVR 8/16 BK	4044211210793	10 ST



Inner locking frame, Length: 125 mm, Height: 11.5 mm, Colour: Black

Artikelnummer	Artikelbezeichnung	GTIN (EAN)	VPE
<u>28503.4</u>	KDS-IVR 8/16 BK	4044211210793	10 ST



Cable entry with TPE seal, Mounting type: Screws, Length: 153 mm, Width: 64 mm, IP 66, Colour: Black

Artikelnummer	Artikelbezeichnung	GTIN (EAN)	VPE
<u>28883.4</u>	KDSI-SR 10/24 BK	4044211242107	1 ST



Cable entry with foamed-in seal, Mounting type: Screws, Length: 106 mm, Width: 70 mm, IP 66, Colour: Black

Artikelnummer	Artikelbezeichnung	GTIN (EAN)	VPE
<u>28500.4</u>	KDS-SR 6/10 BK	4044211210021	1 ST



Cable entry with TPE seal, Mounting type: Screws, Length: 126 mm, Width: 64 mm, IP 66, Colour: Black

Artikelnummer	Artikelbezeichnung	GTIN (EAN)	VPE
<u>28882.4</u>	KDSI-SR 8/16 BK	4044211242091	1 ST



Cable entry set, IP66, Consisting of: 1 x KDS-SR 1-4 BK, 1 x KDS-Inlay 4 BK

Artikelnummer	Artikelbezeichnung	GTIN (EAN)	VPE
<u>28602.4</u>	KDS-Set 1-4 BK	4044211216184	1 ST



Cable entry set, IP66, Consisting of: 1 x KDSI-SR 1-4 BK, 1 x KDS-Inlay 4 BK

Artikelnummer	Artikelbezeichnung	GTIN (EAN)	VPE
<u>28890.4</u>	KDSI-SET 1-4 BK	4044211242152	1 ST



Cable entry set, IP66, Consisting of: 1xKDSI-SR 6/10, 1xKDS-Inlay 2, 1xKDS-Inlay 6

Artikelnummer	Artikelbezeichnung	GTIN (EAN)	VPE
<u>28891.4</u>	KDSI-SET 6/10 BK	4044211242169	1 ST



Cable entry set, IP66, Consisting of: 1xKDSI-SR 6/10, 1xKDS-Inlay 2, 1xKDS-Inlay 6

Artikelnummer	Artikelbezeichnung	GTIN (EAN)	VPE
<u>28891.4</u>	KDSI-SET 6/10 BK	4044211242169	1 ST



Cable entry with TPE seal, Mounting type: Screws, Length: 153 mm, Width: 64 mm, IP 66, Colour: Black

Artikelnummer	Artikelbezeichnung	GTIN (EAN)	VPE
<u>28883.4</u>	KDSI-SR 10/24 BK	4044211242107	1 ST



Cable entry set, IP66, Consisting of: 1xKDSI-SR 8/16, 2xKDS-Inlay 4

Artikelnummer	Artikelbezeichnung	GTIN (EAN)	VPE
<u>28892.4</u>	KDSI-SET 8/16 BK	4044211242176	1 ST



Cable entry with foamed-in seal, Mounting type: Screws, Length: 106 mm, Width: 70 mm, IP 66, Colour: Black

Artikelnummer	Artikelbezeichnung	GTIN (EAN)	VPE
<u>28500.4</u>	KDS-SR 6/10 BK	4044211210021	1 ST



Cable entry set, IP66, Consisting of: 1xKDSI-SR 10/24, each 1xKDS-Inlay 2,4,6

Artikelnummer	Artikelbezeichnung	GTIN (EAN)	VPE
<u>28893.4</u>	KDSI-SET 10/24 BK	4044211242183	1 ST



Cable entry with TPE seal, Mounting type: Screws, Length: 126 mm, Width: 64 mm, IP 66, Colour: Black

Artikelnummer	Artikelbezeichnung	GTIN (EAN)	VPE
<u>28882.4</u>	KDSI-SR 8/16 BK	4044211242091	1 ST



Cable entry with TPE seal, Mounting type: Screws, Length: 106 mm, Width: 64 mm, IP 66, Colour: Black

Artikelnummer	Artikelbezeichnung	GTIN (EAN)	VPE
<u>28881.4</u>	KDSI-SR 6/10 BK	4044211242084	1 ST



Cable entry set, IP66, Consisting of: 1 x KDSI-SR 1-4 BK, 1 x KDS-Inlay 4 BK

Artikelnummer	Artikelbezeichnung	GTIN (EAN)	VPE
<u>28890.4</u>	KDSI-SET 1-4 BK	4044211242152	1 ST



Cable entry set, IP66, Consisting of: 1xKDSI-SR 6/10, 1xKDS-Inlay 2, 1xKDS-Inlay 6

Artikelnummer	Artikelbezeichnung	GTIN (EAN)	VPE
<u>28891.4</u>	KDSI-SET 6/10 BK	4044211242169	1 ST



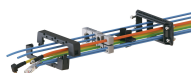
Cable entry set, IP66, Consisting of: 1xKDSI-SR 8/16, 2xKDS-Inlay 4

Artikelnummer	Artikelbezeichnung	GTIN (EAN)	VPE
<u>28892.4</u>	KDSI-SET 8/16 BK	4044211242176	1 ST



Cable entry set, IP66, Consisting of: 1xKDSI-SR 10/24, each 1xKDS-Inlay 2,4,6

Artikelnummer	Artikelbezeichnung	GTIN (EAN)	VPE
<u>28893.4</u>	KDSI-SET 10/24 BK	4044211242183	1 ST



Cable entry with TPE seal, Mounting type: Screws, Length: 106 mm, Width: 64 mm, IP 66, Colour: Black

Artikelnummer	Artikelbezeichnung	GTIN (EAN)	VPE
<u>28881.4</u>	KDSI-SR 6/10 BK	4044211242084	1 ST

28574.6 KDS-DE 13-14 GR



Cable entry with TPE seal, Mounting type: Screws, Length: 153 mm, Width: 64 mm, IP 66, Colour: Black

Artikelnummer	Artikelbezeichnung	GTIN (EAN)	VPE
<u>28883.4</u>	KDSI-SR 10/24 BK	4044211242107	1 ST



Cable entry set, IP66, Consisting of: 1 x KDSI-SR 1-4 BK, 1 x KDS-Inlay 4 BK

Artikelnummer	Artikelbezeichnung	GTIN (EAN)	VPE
<u>28890.4</u>	KDSI-SET 1-4 BK	4044211242152	1 ST



Cable entry set, IP66, Consisting of: 1xKDSI-SR 6/10, 1xKDS-Inlay 2, 1xKDS-Inlay 6

Artikelnummer	Artikelbezeichnung	GTIN (EAN)	VPE
<u>28891.4</u>	KDSI-SET 6/10 BK	4044211242169	1 ST



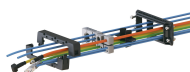
Cable entry set, IP66, Consisting of: 1xKDSI-SR 8/16, 2xKDS-Inlay 4

Artikelnummer	Artikelbezeichnung	GTIN (EAN)	VPE
<u>28892.4</u>	KDSI-SET 8/16 BK	4044211242176	1 ST



Cable entry set, IP66, Consisting of: 1xKDSI-SR 10/24, each 1xKDS-Inlay 2,4,6

Artikelnummer	Artikelbezeichnung	GTIN (EAN)	VPE
<u>28893.4</u>	KDSI-SET 10/24 BK	4044211242183	1 ST



Cable entry with TPE seal, Mounting type: Screws, Length: 106 mm, Width: 64 mm, IP 66, Colour: Black

Artikelnummer	Artikelbezeichnung	GTIN (EAN)	VPE
<u>28881.4</u>	KDSI-SR 6/10 BK	4044211242084	1 ST