

Data sheet

28543.4 KDS-DEG 22-23 BK



Seal, Mounting type: Plug in, Length x width: 42.8 mm, Max. cable diameter: 23 mm, IP 66, Colour: Black

RAL: 9005

Business data

| | |
|--|------------------|
| Article number | 28543.4 |
| Article name | KDS-DEG 22-23 BK |
| GTIN (EAN) | 4044211215415 |
| Packaging unit | 10 |
| Quantity unit | PC |
| Weight per piece (not including packaging) | 24.36 g |
| Weight per piece (including packaging) | 24.76 g |
| Unit of weight | G |
| Customs number | 39259020 |
| Country of origin | DE |
| Product description | Sealing Element |
| Colour | Black |

Technical data

Dimensions

| | |
|--------|---------|
| Length | 42.8 mm |
| Width | 42.8 mm |
| Height | 17.7 mm |

Materials

| | |
|---------------------------|--------|
| Material | TPE |
| Flammability class UL 94 | HB |
| Working temperature, min. | -40 °C |
| Working temperature, max. | 120 °C |
| Halogen-free | ✓ |
| Silicone-free | ✓ |
| UV-resistant | ✓ |

Further technical data

| | |
|----------------------|-----------------------------|
| Mounting type | Plug in |
| Degree of protection | IP66 |
| Strain relief | ✓ |
| Cable diameter, min. | 22 mm |
| Cable diameter, max. | 23 mm |
| NEMA Type | 1, 12, 4x (indoor use only) |
| Number of wires | 1 |

Environmental Product Compliance

| | |
|--------------------------------|------------|
| REACH Conform | yes |
| REACH Reference date | 2023-06-14 |
| REACH Candidate Substance Note | No |
| RoHS Conform | yes |

Approvals

Standards and regulations

| | |
|----------------------------|---|
| Standards / specifications | Strain relief complying with DIN EN 62444 |
|----------------------------|---|

cUL Recognized

| | |
|--------------|-----------------|
| cUL approval | C22.2 No. 14-18 |
|--------------|-----------------|

| | |
|-----------------|---------|
| cUL File Number | E489821 |
|-----------------|---------|

| | |
|----------------|---|
| cUL Recognized | 1 |
|----------------|---|

UL Recognized

| | |
|-------------|---------|
| UL approval | UL 508A |
|-------------|---------|

| | |
|----------------|---------|
| UL File Number | E489821 |
|----------------|---------|

| | |
|---------------|---|
| UL Recognized | 1 |
|---------------|---|

| | |
|----------------|-----------------------------|
| UL Type Rating | 1, 12, 4x (indoor use only) |
|----------------|-----------------------------|

German Lloyd approval

| | |
|---------------------------|------------|
| DNV GL Certificate number | TAE00003V7 |
|---------------------------|------------|

| | |
|-------------------------|--|
| DNV GL Location Classes | Temperature: -40°C to 120°C, Humidity: B, Vibration: B, Ingress protection: IP66 |
|-------------------------|--|

| | |
|-------------------------|---|
| DNV GL approval granted | 1 |
|-------------------------|---|

Media



Accessories

Inlays



Cable entry, Inlay, Mounting type: Plug in, IP 66, Colour: Black

| Article number | Article name | GTIN (EAN) | Packaging unit |
|----------------|----------------|---------------|----------------|
| <u>28516.4</u> | KDS-Inlay 1 BK | 4044211210847 | 5 ST |



Cable entry, Inlay, Mounting type: Plug in, IP 66, Colour: Black

| Article number | Article name | GTIN (EAN) | Packaging unit |
|----------------|----------------|---------------|----------------|
| <u>28517.4</u> | KDS-Inlay 2 BK | 4044211210854 | 5 ST |



Cable entry, Inlay, Mounting type: Plug in, IP 66, Colour: Black

| Article number | Article name | GTIN (EAN) | Packaging unit |
|----------------|----------------|---------------|----------------|
| <u>28518.4</u> | KDS-Inlay 4 BK | 4044211210861 | 5 ST |



Cable entry, Inlay, Mounting type: Plug in, IP 66, Colour: Black

| Article number | Article name | GTIN (EAN) | Packaging unit |
|----------------|----------------|---------------|----------------|
| <u>28519.4</u> | KDS-Inlay 6 BK | 4044211210014 | 5 ST |

Screw frame



Cable entry with foamed-in seal, Mounting type: Screws, Length: 153 mm, Width: 70 mm, IP 66, Colour: Black

| Article number | Article name | GTIN (EAN) | Packaging unit |
|----------------|-----------------|---------------|----------------|
| <u>28504.4</u> | KDS-SR 10/24 BK | 4044211210809 | 1 ST |



Cable entry with foamed-in seal, Mounting type: Screws, Length: 106 mm, Width: 70 mm, IP 66, Colour: Black

| Article number | Article name | GTIN (EAN) | Packaging unit |
|----------------|----------------|---------------|----------------|
| <u>28500.4</u> | KDS-SR 6/10 BK | 4044211210021 | 1 ST |

28543.4 KDS-DEG 22-23 BK

Screw frame



Cable entry with foamed-in seal, Mounting type: Screws, Length: 126 mm, Width: 70 mm, IP 66, Colour: Black

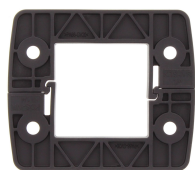
| Article number | Article name | GTIN (EAN) | Packaging unit |
|-------------------------|----------------|---------------|----------------|
| 28502.4 | KDS-SR 8/16 BK | 4044211210786 | 1 ST |



Cable entry with foamed-in seal, Mounting type: Screws, Length: 81 mm, Width: 70 mm, IP 66, Colour: Black

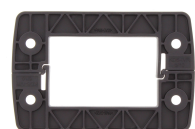
| Article number | Article name | GTIN (EAN) | Packaging unit |
|-------------------------|---------------|---------------|----------------|
| 28506.4 | KDS-SR 1-4 BK | 4044211210823 | 1 ST |

Locking frame



Inner locking frame, Length: 80 mm, Height: 11.5 mm, Colour: Black

| Article number | Article name | GTIN (EAN) | Packaging unit |
|-------------------------|----------------|---------------|----------------|
| 28507.4 | KDS-IVR 1-4 BK | 4044211210830 | 10 ST |



Inner locking frame, Length: 105 mm, Height: 11.5 mm, Colour: Black

| Article number | Article name | GTIN (EAN) | Packaging unit |
|-------------------------|-----------------|---------------|----------------|
| 28501.4 | KDS-IVR 6/10 BK | 4044211210779 | 10 ST |



Inner locking frame, Length: 125 mm, Height: 11.5 mm, Colour: Black

| Article number | Article name | GTIN (EAN) | Packaging unit |
|-------------------------|-----------------|---------------|----------------|
| 28503.4 | KDS-IVR 8/16 BK | 4044211210793 | 10 ST |



Inner locking frame, Length: 152 mm, Height: 11.5 mm, Colour: Black

| Article number | Article name | GTIN (EAN) | Packaging unit |
|-------------------------|------------------|---------------|----------------|
| 28505.4 | KDS-IVR 10/24 BK | 4044211210816 | 10 ST |

28543.4 KDS-DEG 22-23 BK



Split cable gland including counter nut, Thread type: metric, Material: PA 6.6, Protection: IP 66, Colour: Black

| Article number | Article name | GTIN (EAN) | Packaging unit |
|----------------|---------------|---------------|----------------|
| <u>28613.4</u> | KDS-KV M40 BK | 4044211208967 | 5 ST |



Split cable gland including counter nut, Thread type: metric, Material: PA 6.6, Protection: IP 66, Colour: Black

| Article number | Article name | GTIN (EAN) | Packaging unit |
|----------------|---------------|---------------|----------------|
| <u>28614.4</u> | KDS-KV M50 BK | 4044211208974 | 5 ST |



Split cable gland including counter nut, Thread type: metric, Material: PA 6.6, Protection: IP 66, Colour: Black

| Article number | Article name | GTIN (EAN) | Packaging unit |
|----------------|---------------|---------------|----------------|
| <u>28615.4</u> | KDS-KV M63 BK | 4044211208981 | 5 ST |



Cable entry flange plate with foamed-in frame gasket, Mounting type: Screw, Length: 165 mm, Width: 123 mm, IP66, Colour: Black

| Article number | Article name | GTIN (EAN) | Packaging unit |
|----------------|-------------------|---------------|----------------|
| <u>28660.4</u> | KDS-FP 2x10/24 BK | 4044211220358 | 1 ST |



Cable entry, Inlay, Mounting type: Plug in, IP 66, Colour: Black

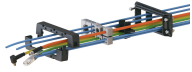
| Article number | Article name | GTIN (EAN) | Packaging unit |
|----------------|----------------|---------------|----------------|
| <u>28517.4</u> | KDS-Inlay 2 BK | 4044211210854 | 5 ST |



Thread and locking adapter, Material: Polyamide PA 6.6, glass-fibre reinforced, Colour: Black

| Article number | Article name | GTIN (EAN) | Packaging unit |
|----------------|----------------|---------------|----------------|
| <u>28776.4</u> | KDS-RGA M50 BK | 4044211234560 | 5 ST |

28543.4 KDS-DEG 22-23 BK



Cable entry with TPE seal, Mounting type: Screws, Length: 81 mm, Width: 64 mm, IP 66, Colour: Black

| Article number | Article name | GTIN (EAN) | Packaging unit |
|----------------|----------------|---------------|----------------|
| <u>28880.4</u> | KDSI-SR 1-4 BK | 4044211243807 | 1 ST |



Thread and locking adapter, Material: Polyamide PA 6.6, glass-fibre reinforced, Colour: Black

| Article number | Article name | GTIN (EAN) | Packaging unit |
|----------------|----------------|---------------|----------------|
| <u>28775.4</u> | KDS-RGA M40 BK | 4044211234553 | 5 ST |



Cable entry, Inlay, Mounting type: Plug in, IP 66, Colour: Black

| Article number | Article name | GTIN (EAN) | Packaging unit |
|----------------|----------------|---------------|----------------|
| <u>28519.4</u> | KDS-Inlay 6 BK | 4044211210014 | 5 ST |



Cable entry with foamed-in seal, Mounting type: Screws, Length: 126 mm, Width: 70 mm, IP 66, Colour: Black

| Article number | Article name | GTIN (EAN) | Packaging unit |
|----------------|----------------|---------------|----------------|
| <u>28502.4</u> | KDS-SR 8/16 BK | 4044211210786 | 1 ST |



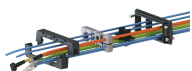
Cable entry set, IP66, Consisting of: 1xKDSI-SR 8/16, 2xKDS-Inlay 4

| Article number | Article name | GTIN (EAN) | Packaging unit |
|----------------|------------------|---------------|----------------|
| <u>28892.4</u> | KDSI-SET 8/16 BK | 4044211242176 | 1 ST |



Inner locking frame, Length: 125 mm, Height: 11.5 mm, Colour: Black

| Article number | Article name | GTIN (EAN) | Packaging unit |
|----------------|-----------------|---------------|----------------|
| <u>28503.4</u> | KDS-IVR 8/16 BK | 4044211210793 | 10 ST |



Cable entry with TPE seal, Mounting type: Screws, Length: 126 mm, Width: 64 mm, IP 66, Colour: Black

| Article number | Article name | GTIN (EAN) | Packaging unit |
|----------------|-----------------|---------------|----------------|
| <u>28882.4</u> | KDSI-SR 8/16 BK | 4044211242091 | 1 ST |

28543.4 KDS-DEG 22-23 BK



Cable entry with TPE seal, Mounting type: Screws, Length: 81 mm, Width: 64 mm, IP 66, Colour: Black

| Article number | Article name | GTIN (EAN) | Packaging unit |
|----------------|----------------|---------------|----------------|
| <u>28880.4</u> | KDSI-SR 1-4 BK | 4044211243807 | 1 ST |



Cable entry with TPE seal, Mounting type: Screws, Length: 106 mm, Width: 64 mm, IP 66, Colour: Black

| Article number | Article name | GTIN (EAN) | Packaging unit |
|----------------|-----------------|---------------|----------------|
| <u>28881.4</u> | KDSI-SR 6/10 BK | 4044211242084 | 1 ST |



Cable entry set, IP66, Consisting of: 1 x KDS-SR 6/10, 1 x KDS-Inlay 2, 1 x KDS-Inlay 6

| Article number | Article name | GTIN (EAN) | Packaging unit |
|----------------|-----------------|---------------|----------------|
| <u>28603.4</u> | KDS-Set 6/10 BK | 4044211216191 | 1 ST |



Cable entry, Inlay, Mounting type: Plug in, IP 66, Colour: Black

| Article number | Article name | GTIN (EAN) | Packaging unit |
|----------------|----------------|---------------|----------------|
| <u>28519.4</u> | KDS-Inlay 6 BK | 4044211210014 | 5 ST |



Cable entry set, IP66, Consisting of: 1xKDSI-SR 10/24, each 1xKDS-Inlay 2,4,6

| Article number | Article name | GTIN (EAN) | Packaging unit |
|----------------|-------------------|---------------|----------------|
| <u>28893.4</u> | KDSI-SET 10/24 BK | 4044211242183 | 1 ST |



Cable entry set, IP66, Consisting of: 1 x KDS-SR 10/24, 1 each of KDS-Inlay 2,4,6

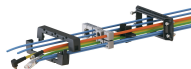
| Article number | Article name | GTIN (EAN) | Packaging unit |
|----------------|------------------|---------------|----------------|
| <u>28605.4</u> | KDS-Set 10/24 BK | 4044211216214 | 1 ST |



Cable entry set, IP66, Consisting of: 1 x KDS-SR 8/16, 1 x KDS-Inlay 1, 2 x KDS-Inlay 4

| Article number | Article name | GTIN (EAN) | Packaging unit |
|----------------|-----------------|---------------|----------------|
| <u>28604.4</u> | KDS-Set 8/16 BK | 4044211216207 | 1 ST |

28543.4 KDS-DEG 22-23 BK



Cable entry with TPE seal, Mounting type: Screws, Length: 106 mm, Width: 64 mm, IP 66, Colour: Black

| Article number | Article name | GTIN (EAN) | Packaging unit |
|----------------|-----------------|---------------|----------------|
| <u>28881.4</u> | KDSI-SR 6/10 BK | 4044211242084 | 1 ST |



Cable entry set, IP66, Consisting of: 1 x KDSI-SR 1-4 BK, 1 x KDS-Inlay 4 BK

| Article number | Article name | GTIN (EAN) | Packaging unit |
|----------------|-----------------|---------------|----------------|
| <u>28890.4</u> | KDSI-SET 1-4 BK | 4044211242152 | 1 ST |



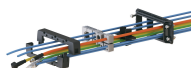
Cable entry set, IP66, Consisting of: 1 x KDS-SR 6/10, 1 x KDS-Inlay 2, 1 x KDS-Inlay 6

| Article number | Article name | GTIN (EAN) | Packaging unit |
|----------------|-----------------|---------------|----------------|
| <u>28603.4</u> | KDS-Set 6/10 BK | 4044211216191 | 1 ST |



Cable entry set, IP66, Consisting of: 1xKDSI-SR 8/16, 2xKDS-Inlay 4

| Article number | Article name | GTIN (EAN) | Packaging unit |
|----------------|------------------|---------------|----------------|
| <u>28892.4</u> | KDSI-SET 8/16 BK | 4044211242176 | 1 ST |



Cable entry with TPE seal, Mounting type: Screws, Length: 106 mm, Width: 64 mm, IP 66, Colour: Black

| Article number | Article name | GTIN (EAN) | Packaging unit |
|----------------|-----------------|---------------|----------------|
| <u>28881.4</u> | KDSI-SR 6/10 BK | 4044211242084 | 1 ST |



Cable entry set, IP66, Consisting of: 1xKDSI-SR 10/24, each 1xKDS-Inlay 2,4,6

| Article number | Article name | GTIN (EAN) | Packaging unit |
|----------------|-------------------|---------------|----------------|
| <u>28893.4</u> | KDSI-SET 10/24 BK | 4044211242183 | 1 ST |



Cable entry with TPE seal, Mounting type: Screws, Length: 106 mm, Width: 64 mm, IP 66, Colour: Black

| Article number | Article name | GTIN (EAN) | Packaging unit |
|----------------|-----------------|---------------|----------------|
| <u>28881.4</u> | KDSI-SR 6/10 BK | 4044211242084 | 1 ST |

28543.4 KDS-DEG 22-23 BK



Cable entry with TPE seal, Mounting type: Screws, Length: 153 mm, Width: 64 mm, IP 66, Colour: Black

| Article number | Article name | GTIN (EAN) | Packaging unit |
|----------------|------------------|---------------|----------------|
| <u>28883.4</u> | KDSI-SR 10/24 BK | 4044211242107 | 1 ST |



Cable entry set, IP66, Consisting of: 1 x KDSI-SR 1-4 BK, 1 x KDS-Inlay 4 BK

| Article number | Article name | GTIN (EAN) | Packaging unit |
|----------------|-----------------|---------------|----------------|
| <u>28890.4</u> | KDSI-SET 1-4 BK | 4044211242152 | 1 ST |



Cable entry set, IP66, Consisting of: 1xKDSI-SR 6/10, 1xKDS-Inlay 2, 1xKDS-Inlay 6

| Article number | Article name | GTIN (EAN) | Packaging unit |
|----------------|------------------|---------------|----------------|
| <u>28891.4</u> | KDSI-SET 6/10 BK | 4044211242169 | 1 ST |



Cable entry set, IP66, Consisting of: 1xKDSI-SR 8/16, 2xKDS-Inlay 4

| Article number | Article name | GTIN (EAN) | Packaging unit |
|----------------|------------------|---------------|----------------|
| <u>28892.4</u> | KDSI-SET 8/16 BK | 4044211242176 | 1 ST |



Cable entry set, IP66, Consisting of: 1xKDSI-SR 10/24, each 1xKDS-Inlay 2,4,6

| Article number | Article name | GTIN (EAN) | Packaging unit |
|----------------|-------------------|---------------|----------------|
| <u>28893.4</u> | KDSI-SET 10/24 BK | 4044211242183 | 1 ST |



Cable entry with TPE seal, Mounting type: Screws, Length: 106 mm, Width: 64 mm, IP 66, Colour: Black

| Article number | Article name | GTIN (EAN) | Packaging unit |
|----------------|-----------------|---------------|----------------|
| <u>28881.4</u> | KDSI-SR 6/10 BK | 4044211242084 | 1 ST |