

# Data sheet

## 28539.4 KDS-DEG 18-19 BK



Seal, Mounting type: Plug in, Length x width: 42.8 mm, Max. cable diameter: 19 mm, IP 66, Colour: Black

**RAL:** 9005

### Business data

|  |                  |
|--|------------------|
| Article number                             | 28539.4          |
| Article name                               | KDS-DEG 18-19 BK |
| GTIN (EAN)                                 | 4044211215330    |
| Packaging unit                             | 10               |
| Quantity unit                              | PC               |
| Weight per piece (not including packaging) | 26.6 g           |
| Weight per piece (including packaging)     | 27 g             |
| Unit of weight                             | G                |
| Customs number                             | 39259020         |
| Country of origin                          | DE               |
| Product description                        | Sealing Element  |
| Colour                                     | Black            |

### Technical data

#### Dimensions

|        |         |
|--------|---------|
| Length | 42.8 mm |
| Width  | 42.8 mm |
| Height | 17.7 mm |

#### Materials

|                           |        |
|---------------------------|--------|
| Material                  | TPE    |
| Flammability class UL 94  | HB     |
| Working temperature, min. | -40 °C |
| Working temperature, max. | 120 °C |
| Halogen-free              | ✓      |
| Silicone-free             | ✓      |
| UV-resistant              | ✓      |

#### Further technical data

|                      |                             |
|----------------------|-----------------------------|
| Mounting type        | Plug in                     |
| Degree of protection | IP66                        |
| Strain relief        | ✓                           |
| Cable diameter, min. | 18 mm                       |
| Cable diameter, max. | 19 mm                       |
| NEMA Type            | 1, 12, 4x (indoor use only) |
| Number of wires      | 1                           |

#### Environmental Product Compliance

|                                |            |
|--------------------------------|------------|
| REACH Conform                  | yes        |
| REACH Reference date           | 2023-06-14 |
| REACH Candidate Substance Note | No         |
| RoHS Conform                   | yes        |

### Approvals

#### Standards and regulations

|                            |   |
|----------------------------|---|
| Standards / specifications | Strain relief complying with DIN EN 62444 |
|----------------------------|---|

#### cUL Recognized

|              |                 |
|--------------|-----------------|
| cUL approval | C22.2 No. 14-18 |
|--------------|-----------------|

|                 |         |
|-----------------|---------|
| cUL File Number | E489821 |
|-----------------|---------|

|                |   |
|----------------|---|
| cUL Recognized | 1 |
|----------------|---|

#### UL Recognized

|             |         |
|-------------|---------|
| UL approval | UL 508A |
|-------------|---------|

|                |         |
|----------------|---------|
| UL File Number | E489821 |
|----------------|---------|

|               |   |
|---------------|---|
| UL Recognized | 1 |
|---------------|---|

|                |                             |
|----------------|-----------------------------|
| UL Type Rating | 1, 12, 4x (indoor use only) |
|----------------|-----------------------------|

#### German Lloyd approval

|                           |            |
|---------------------------|------------|
| DNV GL Certificate number | TAE00003V7 |
|---------------------------|------------|

|                         |  |
|-------------------------|--|
| DNV GL Location Classes | Temperature: -40°C to 120°C, Humidity: B, Vibration: B, Ingress protection: IP66 |
|-------------------------|--|

|                         |   |
|-------------------------|---|
| DNV GL approval granted | 1 |
|-------------------------|---|

Media



### Accessories

#### Inlays



Cable entry, Inlay, Mounting type: Plug in, IP 66, Colour: Black

| Article number | Article name   | GTIN (EAN)    | Packaging unit |
|----------------|----------------|---------------|----------------|
| <u>28516.4</u> | KDS-Inlay 1 BK | 4044211210847 | 5 ST           |



Cable entry, Inlay, Mounting type: Plug in, IP 66, Colour: Black

| Article number | Article name   | GTIN (EAN)    | Packaging unit |
|----------------|----------------|---------------|----------------|
| <u>28517.4</u> | KDS-Inlay 2 BK | 4044211210854 | 5 ST           |



Cable entry, Inlay, Mounting type: Plug in, IP 66, Colour: Black

| Article number | Article name   | GTIN (EAN)    | Packaging unit |
|----------------|----------------|---------------|----------------|
| <u>28518.4</u> | KDS-Inlay 4 BK | 4044211210861 | 5 ST           |



Cable entry, Inlay, Mounting type: Plug in, IP 66, Colour: Black

| Article number | Article name   | GTIN (EAN)    | Packaging unit |
|----------------|----------------|---------------|----------------|
| <u>28519.4</u> | KDS-Inlay 6 BK | 4044211210014 | 5 ST           |

#### Screw frame



Cable entry with foamed-in seal, Mounting type: Screws, Length: 153 mm, Width: 70 mm, IP 66, Colour: Black

| Article number | Article name    | GTIN (EAN)    | Packaging unit |
|----------------|-----------------|---------------|----------------|
| <u>28504.4</u> | KDS-SR 10/24 BK | 4044211210809 | 1 ST           |



Cable entry with foamed-in seal, Mounting type: Screws, Length: 106 mm, Width: 70 mm, IP 66, Colour: Black

| Article number | Article name   | GTIN (EAN)    | Packaging unit |
|----------------|----------------|---------------|----------------|
| <u>28500.4</u> | KDS-SR 6/10 BK | 4044211210021 | 1 ST           |

## 28539.4 KDS-DEG 18-19 BK

### Screw frame



Cable entry with foamed-in seal, Mounting type: Screws, Length: 126 mm, Width: 70 mm, IP 66, Colour: Black

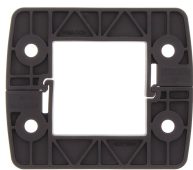
| Article number          | Article name   | GTIN (EAN)    | Packaging unit |
|-------------------------|----------------|---------------|----------------|
| <a href="#">28502.4</a> | KDS-SR 8/16 BK | 4044211210786 | 1 ST           |



Cable entry with foamed-in seal, Mounting type: Screws, Length: 81 mm, Width: 70 mm, IP 66, Colour: Black

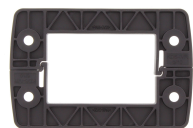
| Article number          | Article name  | GTIN (EAN)    | Packaging unit |
|-------------------------|---------------|---------------|----------------|
| <a href="#">28506.4</a> | KDS-SR 1-4 BK | 4044211210823 | 1 ST           |

### Locking frame



Inner locking frame, Length: 80 mm, Height: 11.5 mm, Colour: Black

| Article number          | Article name   | GTIN (EAN)    | Packaging unit |
|-------------------------|----------------|---------------|----------------|
| <a href="#">28507.4</a> | KDS-IVR 1-4 BK | 4044211210830 | 10 ST          |



Inner locking frame, Length: 105 mm, Height: 11.5 mm, Colour: Black

| Article number          | Article name    | GTIN (EAN)    | Packaging unit |
|-------------------------|-----------------|---------------|----------------|
| <a href="#">28501.4</a> | KDS-IVR 6/10 BK | 4044211210779 | 10 ST          |



Inner locking frame, Length: 125 mm, Height: 11.5 mm, Colour: Black

| Article number          | Article name    | GTIN (EAN)    | Packaging unit |
|-------------------------|-----------------|---------------|----------------|
| <a href="#">28503.4</a> | KDS-IVR 8/16 BK | 4044211210793 | 10 ST          |



Inner locking frame, Length: 152 mm, Height: 11.5 mm, Colour: Black

| Article number          | Article name     | GTIN (EAN)    | Packaging unit |
|-------------------------|------------------|---------------|----------------|
| <a href="#">28505.4</a> | KDS-IVR 10/24 BK | 4044211210816 | 10 ST          |

### ##INVERSE##CONTA-CABLE

## 28539.4 KDS-DEG 18-19 BK

Cable entry, Inlay, Mounting type: Plug in, IP 66, Colour: Black



| Article number | Article name   | GTIN (EAN)    | Packaging unit |
|----------------|----------------|---------------|----------------|
| <u>28516.4</u> | KDS-Inlay 1 BK | 4044211210847 | 5 ST           |

Split cable gland including counter nut, Thread type: metric, Material: PA 6.6, Protection: IP 66, Colour: Black



| Article number | Article name  | GTIN (EAN)    | Packaging unit |
|----------------|---------------|---------------|----------------|
| <u>28614.4</u> | KDS-KV M50 BK | 4044211208974 | 5 ST           |

Split cable gland including counter nut, Thread type: metric, Material: PA 6.6, Protection: IP 66, Colour: Black



| Article number | Article name  | GTIN (EAN)    | Packaging unit |
|----------------|---------------|---------------|----------------|
| <u>28615.4</u> | KDS-KV M63 BK | 4044211208981 | 5 ST           |

Cable entry, Inlay, Mounting type: Plug in, IP 66, Colour: Black



| Article number | Article name   | GTIN (EAN)    | Packaging unit |
|----------------|----------------|---------------|----------------|
| <u>28519.4</u> | KDS-Inlay 6 BK | 4044211210014 | 5 ST           |

Cable entry flange plate with foamed-in frame gasket, Mounting type: Screw, Length: 165 mm, Width: 174 mm, IP66, Colour: Black



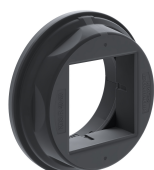
| Article number | Article name      | GTIN (EAN)    | Packaging unit |
|----------------|-------------------|---------------|----------------|
| <u>28661.4</u> | KDS-FP 3x10/24 BK | 4044211220365 | 1 ST           |

Cable entry, Inlay, Mounting type: Plug in, IP 66, Colour: Black



| Article number | Article name   | GTIN (EAN)    | Packaging unit |
|----------------|----------------|---------------|----------------|
| <u>28518.4</u> | KDS-Inlay 4 BK | 4044211210861 | 5 ST           |

Round cable entry, Material: polyamide PA 6.6, glass-fibre reinforced | TPE, Colour: Black



| Article number | Article name   | GTIN (EAN)    | Packaging unit |
|----------------|----------------|---------------|----------------|
| <u>28774.4</u> | KDS-R 40-63 BK | 4044211234546 | 5 ST           |

## 28539.4 KDS-DEG 18-19 BK



Thread and locking adapter, Material: Polyamide PA 6.6, glass-fibre reinforced, Colour: Black

| Article number | Article name   | GTIN (EAN)    | Packaging unit |
|----------------|----------------|---------------|----------------|
| <u>28775.4</u> | KDS-RGA M40 BK | 4044211234553 | 5 ST           |



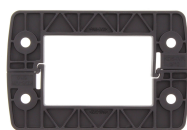
Cable entry, Inlay, Mounting type: Plug in, IP 66, Colour: Black

| Article number | Article name   | GTIN (EAN)    | Packaging unit |
|----------------|----------------|---------------|----------------|
| <u>28516.4</u> | KDS-Inlay 1 BK | 4044211210847 | 5 ST           |



Cable entry with foamed-in seal, Mounting type: Screws, Length: 126 mm, Width: 70 mm, IP 66, Colour: Black

| Article number | Article name   | GTIN (EAN)    | Packaging unit |
|----------------|----------------|---------------|----------------|
| <u>28502.4</u> | KDS-SR 8/16 BK | 4044211210786 | 1 ST           |



Inner locking frame, Length: 105 mm, Height: 11.5 mm, Colour: Black

| Article number | Article name    | GTIN (EAN)    | Packaging unit |
|----------------|-----------------|---------------|----------------|
| <u>28501.4</u> | KDS-IVR 6/10 BK | 4044211210779 | 10 ST          |



Inner locking frame, Length: 125 mm, Height: 11.5 mm, Colour: Black

| Article number | Article name    | GTIN (EAN)    | Packaging unit |
|----------------|-----------------|---------------|----------------|
| <u>28503.4</u> | KDS-IVR 8/16 BK | 4044211210793 | 10 ST          |



Cable entry with foamed-in seal, Mounting type: Screws, Length: 81 mm, Width: 70 mm, IP 66, Colour: Black

| Article number | Article name  | GTIN (EAN)    | Packaging unit |
|----------------|---------------|---------------|----------------|
| <u>28506.4</u> | KDS-SR 1-4 BK | 4044211210823 | 1 ST           |



Cable entry with TPE seal, Mounting type: Screws, Length: 153 mm, Width: 64 mm, IP 66, Colour: Black

| Article number | Article name     | GTIN (EAN)    | Packaging unit |
|----------------|------------------|---------------|----------------|
| <u>28883.4</u> | KDSI-SR 10/24 BK | 4044211242107 | 1 ST           |



## 28539.4 KDS-DEG 18-19 BK



Cable entry set, IP66, Consisting of: 1 x KDSI-SR 1-4 BK, 1 x KDS-Inlay 4 BK

| Article number | Article name    | GTIN (EAN)    | Packaging unit |
|----------------|-----------------|---------------|----------------|
| <u>28890.4</u> | KDSI-SET 1-4 BK | 4044211242152 | 1 ST           |



Cable entry, Inlay, Mounting type: Plug in, IP 66, Colour: Black

| Article number | Article name   | GTIN (EAN)    | Packaging unit |
|----------------|----------------|---------------|----------------|
| <u>28518.4</u> | KDS-Inlay 4 BK | 4044211210861 | 5 ST           |



Cable entry set, IP66, Consisting of: 1xKDSI-SR 8/16, 2xKDS-Inlay 4

| Article number | Article name     | GTIN (EAN)    | Packaging unit |
|----------------|------------------|---------------|----------------|
| <u>28892.4</u> | KDSI-SET 8/16 BK | 4044211242176 | 1 ST           |



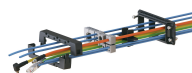
Cable entry set, IP66, Consisting of: 1 x KDSI-SR 1-4 BK, 1 x KDS-Inlay 4 BK

| Article number | Article name    | GTIN (EAN)    | Packaging unit |
|----------------|-----------------|---------------|----------------|
| <u>28890.4</u> | KDSI-SET 1-4 BK | 4044211242152 | 1 ST           |



Cable entry with foamed-in seal, Mounting type: Screws, Length: 106 mm, Width: 70 mm, IP 66, Colour: Black

| Article number | Article name   | GTIN (EAN)    | Packaging unit |
|----------------|----------------|---------------|----------------|
| <u>28500.4</u> | KDS-SR 6/10 BK | 4044211210021 | 1 ST           |



Cable entry with TPE seal, Mounting type: Screws, Length: 106 mm, Width: 64 mm, IP 66, Colour: Black

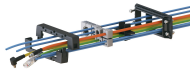
| Article number | Article name    | GTIN (EAN)    | Packaging unit |
|----------------|-----------------|---------------|----------------|
| <u>28881.4</u> | KDSI-SR 6/10 BK | 4044211242084 | 1 ST           |



Cable entry set, IP66, Consisting of: 1 x KDS-SR 1-4 BK, 1 x KDS-Inlay 4 BK

| Article number | Article name   | GTIN (EAN)    | Packaging unit |
|----------------|----------------|---------------|----------------|
| <u>28602.4</u> | KDS-Set 1-4 BK | 4044211216184 | 1 ST           |

## 28539.4 KDS-DEG 18-19 BK



Cable entry with TPE seal, Mounting type: Screws, Length: 106 mm, Width: 64 mm, IP 66, Colour: Black

| Article number | Article name    | GTIN (EAN)    | Packaging unit |
|----------------|-----------------|---------------|----------------|
| <u>28881.4</u> | KDSI-SR 6/10 BK | 4044211242084 | 1 ST           |



Cable entry set, IP66, Consisting of: 1xKDSI-SR 6/10, 1xKDS-Inlay 2, 1xKDS-Inlay 6

| Article number | Article name     | GTIN (EAN)    | Packaging unit |
|----------------|------------------|---------------|----------------|
| <u>28891.4</u> | KDSI-SET 6/10 BK | 4044211242169 | 1 ST           |



Cable entry set, IP66, Consisting of: 1xKDSI-SR 8/16, 2xKDS-Inlay 4

| Article number | Article name     | GTIN (EAN)    | Packaging unit |
|----------------|------------------|---------------|----------------|
| <u>28892.4</u> | KDSI-SET 8/16 BK | 4044211242176 | 1 ST           |



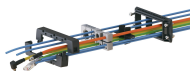
Cable entry set, IP66, Consisting of: 1xKDSI-SR 8/16, 2xKDS-Inlay 4

| Article number | Article name     | GTIN (EAN)    | Packaging unit |
|----------------|------------------|---------------|----------------|
| <u>28892.4</u> | KDSI-SET 8/16 BK | 4044211242176 | 1 ST           |



Cable entry with TPE seal, Mounting type: Screws, Length: 106 mm, Width: 64 mm, IP 66, Colour: Black

| Article number | Article name    | GTIN (EAN)    | Packaging unit |
|----------------|-----------------|---------------|----------------|
| <u>28881.4</u> | KDSI-SR 6/10 BK | 4044211242084 | 1 ST           |



Cable entry with TPE seal, Mounting type: Screws, Length: 126 mm, Width: 64 mm, IP 66, Colour: Black

| Article number | Article name    | GTIN (EAN)    | Packaging unit |
|----------------|-----------------|---------------|----------------|
| <u>28882.4</u> | KDSI-SR 8/16 BK | 4044211242091 | 1 ST           |



Cable entry with TPE seal, Mounting type: Screws, Length: 153 mm, Width: 64 mm, IP 66, Colour: Black

| Article number | Article name     | GTIN (EAN)    | Packaging unit |
|----------------|------------------|---------------|----------------|
| <u>28883.4</u> | KDSI-SR 10/24 BK | 4044211242107 | 1 ST           |

## 28539.4 KDS-DEG 18-19 BK



Cable entry set, IP66, Consisting of: 1 x KDSI-SR 1-4 BK, 1 x KDS-Inlay 4 BK

| Article number          | Article name    | GTIN (EAN)    | Packaging unit |
|-------------------------|-----------------|---------------|----------------|
| <a href="#">28890.4</a> | KDSI-SET 1-4 BK | 4044211242152 | 1 ST           |



Cable entry set, IP66, Consisting of: 1xKDSI-SR 6/10, 1xKDS-Inlay 2, 1xKDS-Inlay 6

| Article number          | Article name     | GTIN (EAN)    | Packaging unit |
|-------------------------|------------------|---------------|----------------|
| <a href="#">28891.4</a> | KDSI-SET 6/10 BK | 4044211242169 | 1 ST           |



Cable entry set, IP66, Consisting of: 1xKDSI-SR 8/16, 2xKDS-Inlay 4

| Article number          | Article name     | GTIN (EAN)    | Packaging unit |
|-------------------------|------------------|---------------|----------------|
| <a href="#">28892.4</a> | KDSI-SET 8/16 BK | 4044211242176 | 1 ST           |



Cable entry set, IP66, Consisting of: 1xKDSI-SR 10/24, each 1xKDS-Inlay 2,4,6

| Article number          | Article name      | GTIN (EAN)    | Packaging unit |
|-------------------------|-------------------|---------------|----------------|
| <a href="#">28893.4</a> | KDSI-SET 10/24 BK | 4044211242183 | 1 ST           |



Cable entry with TPE seal, Mounting type: Screws, Length: 106 mm, Width: 64 mm, IP 66, Colour: Black

| Article number          | Article name    | GTIN (EAN)    | Packaging unit |
|-------------------------|-----------------|---------------|----------------|
| <a href="#">28881.4</a> | KDSI-SR 6/10 BK | 4044211242084 | 1 ST           |