

# Data sheet

## 28518.4 KDS-Inlay 4 BK



Cable entry, Inlay, Mounting type: Plug in, IP 66, Colour: Black

**RAL:** 9005

### Business data

Article number	<u>28518.4</u>
Article name	KDS-Inlay 4 BK
GTIN (EAN)	4044211210861
Packaging unit	5
Quantity unit	PC
Weight per piece (not including packaging)	5.1 g
Weight per piece (including packaging)	5.5 g
Unit of weight	G
Customs number	39259020
Country of origin	DE
Product description	Cable Entry
Colour	Black

### Technical data

#### Dimensions

Length	45 mm
Width	45 mm
Height	17.7 mm
Installation height	17.7 mm

#### Materials

Material	Polyamide 6.6
Glass-fibre reinforced	✓
Flammability class UL 94	V-0
Working temperature, min.	-40 °C
Working temperature, max.	120 °C
Sealing material	TPE
Halogen-free	✓
Silicone-free	✓

#### Further technical data

Mounting type	Plug in
Degree of protection	IP66
NEMA Type	1, 12, 4x (indoor use only)

#### Environmental Product Compliance

REACH Conform	yes
REACH Reference date	2023-06-14
REACH Candidate Substance Note	No
RoHS Conform	yes

## 28518.4 KDS-Inlay 4 BK

### Approvals

#### cUL Recognized

cUL approval	C22.2 No. 14-18
cUL File Number	E489821
cUL Recognized	1

#### UL Recognized

UL approval	UL 508A
UL File Number	E489821
UL Recognized	1
UL Type Rating	1, 12, 4x (indoor use only)

#### German Lloyd approval

DNV GL Certificate number	TAE00003V7
DNV GL Location Classes	Temperature: -40°C to 120°C, Humidity: B, Vibration: B, Ingress protection: IP66
DNV GL approval granted	1

# Data sheet

## 28518.4 KDS-Inlay 4 BK

### Media





### Accessories

#### Small Seals



Seal, Mounting type: Plug in, Length x width: 42.8 mm, Max. cable diameter: 20 mm, IP 66, Colour: Black

Article number	Article name	GTIN (EAN)	Packaging unit
<u>28540.4</u>	KDS-DEG 19-20 BK	4044211215354	10 ST



Seal dummy, Mounting type: Plug in, Length x width: 42.8 mm, IP 66, Colour: Black

Article number	Article name	GTIN (EAN)	Packaging unit
<u>28534.4</u>	KDS-DEG/B BK	4044211215255	10 ST



Seal, Mounting type: Plug in, Length x width: 42.8 mm, Max. cable diameter: 15 mm, IP 66, Colour: Black

Article number	Article name	GTIN (EAN)	Packaging unit
<u>28535.4</u>	KDS-DEG 14-15 BK	4044211209995	10 ST



Seal, Mounting type: Plug in, Length x width: 42.8 mm, Max. cable diameter: 16 mm, IP 66, Colour: Black

Article number	Article name	GTIN (EAN)	Packaging unit
<u>28536.4</u>	KDS-DEG 15-16 BK	4044211215279	10 ST



Seal, Mounting type: Plug in, Length x width: 42.8 mm, Max. cable diameter: 17 mm, IP 66, Colour: Black

Article number	Article name	GTIN (EAN)	Packaging unit
<u>28537.4</u>	KDS-DEG 16-17 BK	4044211215293	10 ST



Seal, Mounting type: Plug in, Length x width: 42.8 mm, Max. cable diameter: 18 mm, IP 66, Colour: Black

Article number	Article name	GTIN (EAN)	Packaging unit
<u>28538.4</u>	KDS-DEG 17-18 BK	4044211215316	10 ST

## 28518.4 KDS-Inlay 4 BK

### Small Seals



Seal, Mounting type: Plug in, Length x width: 42.8 mm, Max. cable diameter: 24 mm, IP 66, Colour: Black

Article number	Article name	GTIN (EAN)	Packaging unit
<u>28544.4</u>	KDS-DEG 23-24 BK	4044211215439	10 ST



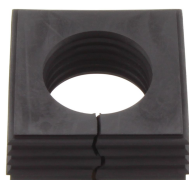
Seal, Mounting type: Plug in, Length x width: 42.8 mm, Max. cable diameter: 25 mm, IP 66, Colour: Black

Article number	Article name	GTIN (EAN)	Packaging unit
<u>28545.4</u>	KDS-DEG 24-25 BK	4044211215453	10 ST



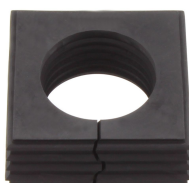
Seal, Mounting type: Plug in, Length x width: 42.8 mm, Max. cable diameter: 26 mm, IP 66, Colour: Black

Article number	Article name	GTIN (EAN)	Packaging unit
<u>28546.4</u>	KDS-DEG 25-26 BK	4044211215460	10 ST



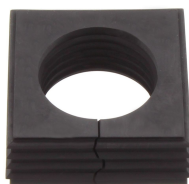
Seal, Mounting type: Plug in, Length x width: 42.8 mm, Max. cable diameter: 27 mm, IP 66, Colour: Black

Article number	Article name	GTIN (EAN)	Packaging unit
<u>28547.4</u>	KDS-DEG 26-27 BK	4044211215491	10 ST



Seal, Mounting type: Plug in, Length x width: 42.8 mm, Max. cable diameter: 28 mm, IP 66, Colour: Black

Article number	Article name	GTIN (EAN)	Packaging unit
<u>28548.4</u>	KDS-DEG 27-28 BK	4044211215514	10 ST

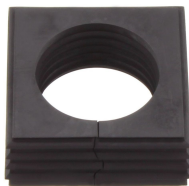


Seal, Mounting type: Plug in, Length x width: 42.8 mm, Max. cable diameter: 29 mm, IP 66, Colour: Black

Article number	Article name	GTIN (EAN)	Packaging unit
<u>28549.4</u>	KDS-DEG 28-29 BK	4044211215538	10 ST

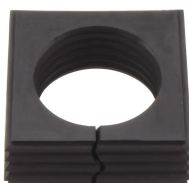
## 28518.4 KDS-Inlay 4 BK

### Small Seals



Seal, Mounting type: Plug in, Length x width: 42.8 mm, Max. cable diameter: 30 mm, IP 66, Colour: Black

Article number	Article name	GTIN (EAN)	Packaging unit
<u>28550.4</u>	KDS-DEG 29-30 BK	4044211215552	10 ST



Seal, Mounting type: Plug in, Length x width: 42.8 mm, Max. cable diameter: 31 mm, IP 66, Colour: Black

Article number	Article name	GTIN (EAN)	Packaging unit
<u>28551.4</u>	KDS-DEG 30-31 BK	4044211215576	10 ST



Seal, Mounting type: Plug in, Length x width: 42.8 mm, Max. cable diameter: 32 mm, IP 66, Colour: Black

Article number	Article name	GTIN (EAN)	Packaging unit
<u>28552.4</u>	KDS-DEG 31-32 BK	4044211215590	10 ST



Seal, Mounting type: Plug in, Length x width: 42.8 mm, Max. cable diameter: 23 mm, IP 66, Colour: Black

Article number	Article name	GTIN (EAN)	Packaging unit
<u>28543.4</u>	KDS-DEG 22-23 BK	4044211215415	10 ST



Seal, Mounting type: Plug in, Length x width: 42.8 mm, Max. cable diameter: 24 mm, IP 66, Colour: Black

Article number	Article name	GTIN (EAN)	Packaging unit
<u>28554.4</u>	KDS-DEG/K 7-24 BK	4044211216108	10 ST



Seal, Mounting type: Plug in, Length x width: 42.8 mm, Max. cable diameter: 19 mm, IP 66, Colour: Black

Article number	Article name	GTIN (EAN)	Packaging unit
<u>28539.4</u>	KDS-DEG 18-19 BK	4044211215330	10 ST

### Small Seals



Seal, Mounting type: Plug in, Length x width: 42.8 mm, Max. cable diameter: 21 mm, IP 66, Colour: Black

Article number	Article name	GTIN (EAN)	Packaging unit
<u>28541.4</u>	KDS-DEG 20-21 BK	4044211215378	10 ST



Seal, Mounting type: Plug in, Length x width: 42.8 mm, Max. cable diameter: 22 mm, IP 66, Colour: Black

Article number	Article name	GTIN (EAN)	Packaging unit
<u>28542.4</u>	KDS-DEG 21-22 BK	4044211215392	10 ST



Seal, Mounting type: Plug in, Length x width: 20.3 mm, Max. cable diameter: 11 mm, IP 66, Colour: Black

Article number	Article name	GTIN (EAN)	Packaging unit
<u>28530.4</u>	KDS-DE 10-11 BK	4044211210960	10 ST



Seal, Mounting type: Plug in, Length x width: 20.3 mm, Max. cable diameter: 12 mm, IP 66, Colour: Black

Article number	Article name	GTIN (EAN)	Packaging unit
<u>28531.4</u>	KDS-DE 11-12 BK	4044211210977	10 ST



Seal, Mounting type: Plug in, Length x width: 20.3 mm, Max. cable diameter: 13 mm, IP 66, Colour: Black

Article number	Article name	GTIN (EAN)	Packaging unit
<u>28532.4</u>	KDS-DE 12-13 BK	4044211210984	10 ST



Seal, Mounting type: Plug in, Length x width: 20.3 mm, Max. cable diameter: 14 mm, IP 66, Colour: Black

Article number	Article name	GTIN (EAN)	Packaging unit
<u>28533.4</u>	KDS-DE 13-14 BK	4044211210991	10 ST

## 28518.4 KDS-Inlay 4 BK

### Small Seals



Seal, Mounting type: Plug in, Length x width: 20.3 mm, Max. cable diameter: 11 mm, IP 66, Colour: Black

Article number	Article name	GTIN (EAN)	Packaging unit
<u>28553.4</u>	KDS-DE/K 2-11 BK	4044211216092	10 ST



Seal, Mounting type: Plug in, Length x width: 20.3 mm, Max. cable diameter: 5 mm, IP 66, Colour: Black

Article number	Article name	GTIN (EAN)	Packaging unit
<u>28555.4</u>	KDS-DE 2X4-5 BK	4044211215620	10 ST



Seal dummy, Mounting type: Plug in, Length x width: 20.3 mm, IP 66, Colour: Black

Article number	Article name	GTIN (EAN)	Packaging unit
<u>28520.4</u>	KDS-DE/B BK	4044211210878	10 ST



Seal, Mounting type: Plug in, Length x width: 20.3 mm, Max. cable diameter: 2 mm, IP 66, Colour: Black

Article number	Article name	GTIN (EAN)	Packaging unit
<u>28521.4</u>	KDS-DE 1,5-2 BK	4044211210007	10 ST



Seal, Mounting type: Plug in, Length x width: 20.3 mm, Max. cable diameter: 3 mm, IP 66, Colour: Black

Article number	Article name	GTIN (EAN)	Packaging unit
<u>28522.4</u>	KDS-DE 2-3 BK	4044211210885	10 ST



Seal, Mounting type: Plug in, Length x width: 20.3 mm, Max. cable diameter: 4 mm, IP 66, Colour: Black

Article number	Article name	GTIN (EAN)	Packaging unit
<u>28523.4</u>	KDS-DE 3-4 BK	4044211210892	10 ST

## 28518.4 KDS-Inlay 4 BK

### Small Seals



Seal, Mounting type: Plug in, Length x width: 20.3 mm, Max. cable diameter: 5 mm, IP66, Colour: Black

Article number	Article name	GTIN (EAN)	Packaging unit
<u>28524.4</u>	KDS-DE 4-5 BK	4044211210908	10 ST



Seal, Mounting type: Plug in, Length x width: 20.3 mm, Max. cable diameter: 6 mm, IP 66, Colour: Black

Article number	Article name	GTIN (EAN)	Packaging unit
<u>28525.4</u>	KDS-DE 5-6 BK	4044211210915	10 ST



Seal, Mounting type: Plug in, Length x width: 20.3 mm, Max. cable diameter: 7 mm, IP 66, Colour: Black

Article number	Article name	GTIN (EAN)	Packaging unit
<u>28526.4</u>	KDS-DE 6-7 BK	4044211210922	10 ST



Seal, Mounting type: Plug in, Length x width: 20.3 mm, Max. cable diameter: 8 mm, IP 66, Colour: Black

Article number	Article name	GTIN (EAN)	Packaging unit
<u>28527.4</u>	KDS-DE 7-8 BK	4044211210939	10 ST



Seal, Mounting type: Plug in, Length x width: 20.3 mm, Max. cable diameter: 9 mm, IP 66, Colour: Black

Article number	Article name	GTIN (EAN)	Packaging unit
<u>28528.4</u>	KDS-DE 8-9 BK	4044211210946	10 ST



Seal, Mounting type: Plug in, Length x width: 20.3 mm, Max. cable diameter: 10 mm, IP 66, Colour: Black

Article number	Article name	GTIN (EAN)	Packaging unit
<u>28529.4</u>	KDS-DE 9-10 BK	4044211210953	10 ST



## 28518.4 KDS-Inlay 4 BK

### Screw frame



Cable entry with foamed-in seal, Mounting type: Screws, Length: 153 mm, Width: 70 mm, IP 66, Colour: Black

Article number	Article name	GTIN (EAN)	Packaging unit
<a href="#">28504.4</a>	KDS-SR 10/24 BK	4044211210809	1 ST



Cable entry with foamed-in seal, Mounting type: Screws, Length: 126 mm, Width: 70 mm, IP 66, Colour: Black

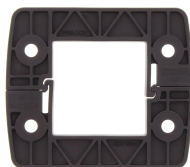
Article number	Article name	GTIN (EAN)	Packaging unit
<a href="#">28502.4</a>	KDS-SR 8/16 BK	4044211210786	1 ST



Cable entry with foamed-in seal, Mounting type: Screws, Length: 81 mm, Width: 70 mm, IP 66, Colour: Black

Article number	Article name	GTIN (EAN)	Packaging unit
<a href="#">28506.4</a>	KDS-SR 1-4 BK	4044211210823	1 ST

### Locking frame



Inner locking frame, Length: 80 mm, Height: 11.5 mm, Colour: Black

Article number	Article name	GTIN (EAN)	Packaging unit
<a href="#">28507.4</a>	KDS-IVR 1-4 BK	4044211210830	10 ST



Inner locking frame, Length: 125 mm, Height: 11.5 mm, Colour: Black

Article number	Article name	GTIN (EAN)	Packaging unit
<a href="#">28503.4</a>	KDS-IVR 8/16 BK	4044211210793	10 ST



Inner locking frame, Length: 152 mm, Height: 11.5 mm, Colour: Black

Article number	Article name	GTIN (EAN)	Packaging unit
<a href="#">28505.4</a>	KDS-IVR 10/24 BK	4044211210816	10 ST

## 28518.4 KDS-Inlay 4 BK

### ##INVERSE##CONTA-CABLE



Seal, Mounting type: Plug in, Length x width: 42.8 mm, Max. cable diameter: 20 mm, IP 66, Colour: Black

Article number	Article name	GTIN (EAN)	Packaging unit
<a href="#">28540.4</a>	KDS-DEG 19-20 BK	4044211215354	10 ST



Seal, Mounting type: Plug in, Length x width: 42.8 mm, Max. cable diameter: 33 mm, IP 66, Colour: Black

Article number	Article name	GTIN (EAN)	Packaging unit
<a href="#">28601.4</a>	KDS-DEG 32-33 BK	4044211215613	10 ST



Cable entry flange plate with foamed-in frame gasket, Mounting type: Screw, Length: 165 mm, Width: 123 mm, IP66, Colour: Black

Article number	Article name	GTIN (EAN)	Packaging unit
<a href="#">28660.4</a>	KDS-FP 2x10/24 BK	4044211220358	1 ST



Cable entry flange plate with foamed-in frame gasket, Mounting type: Screw, Length: 165 mm, Width: 174 mm, IP66, Colour: Black

Article number	Article name	GTIN (EAN)	Packaging unit
<a href="#">28661.4</a>	KDS-FP 3x10/24 BK	4044211220365	1 ST



Seal dummy, Mounting type: Plug in, Length x width: 42.8 mm, IP 66, Colour: Black

Article number	Article name	GTIN (EAN)	Packaging unit
<a href="#">28534.4</a>	KDS-DEG/B BK	4044211215255	10 ST



Seal, Mounting type: Plug in, Length x width: 42.8 mm, Max. cable diameter: 15 mm, IP 66, Colour: Black

Article number	Article name	GTIN (EAN)	Packaging unit
<a href="#">28535.4</a>	KDS-DEG 14-15 BK	4044211209995	10 ST



## 28518.4 KDS-Inlay 4 BK

### ##INVERSE##CONTA-CABLE



Seal, Mounting type: Plug in, Length x width: 42.8 mm, Max. cable diameter: 16 mm, IP 66, Colour: Black

Article number	Article name	GTIN (EAN)	Packaging unit
<u>28536.4</u>	KDS-DEG 15-16 BK	4044211215279	10 ST



Seal, Mounting type: Plug in, Length x width: 42.8 mm, Max. cable diameter: 17 mm, IP 66, Colour: Black

Article number	Article name	GTIN (EAN)	Packaging unit
<u>28537.4</u>	KDS-DEG 16-17 BK	4044211215293	10 ST



Seal, Mounting type: Plug in, Length x width: 42.8 mm, Max. cable diameter: 18 mm, IP 66, Colour: Black

Article number	Article name	GTIN (EAN)	Packaging unit
<u>28538.4</u>	KDS-DEG 17-18 BK	4044211215316	10 ST



Seal, Mounting type: Plug in, Length x width: 42.8 mm, Max. cable diameter: 24 mm, IP 66, Colour: Black

Article number	Article name	GTIN (EAN)	Packaging unit
<u>28544.4</u>	KDS-DEG 23-24 BK	4044211215439	10 ST



Seal, Mounting type: Plug in, Length x width: 42.8 mm, Max. cable diameter: 20 mm, IP 66, Colour: Grey

Article number	Article name	GTIN (EAN)	Packaging unit
<u>28581.6</u>	KDS-DEG 19-20 GR	4044211215347	10 ST



Seal, Mounting type: Plug in, Length x width: 42.8 mm, Max. cable diameter: 21 mm, IP 66, Colour: Grey

Article number	Article name	GTIN (EAN)	Packaging unit
<u>28582.6</u>	KDS-DEG 20-21 GR	4044211215361	10 ST

## 28518.4 KDS-Inlay 4 BK

### ##INVERSE##CONTA-CABLE



Seal, Mounting type: Plug in, Length x width: 42.8 mm, Max. cable diameter: 22 mm, IP 66, Colour: Grey

Article number	Article name	GTIN (EAN)	Packaging unit
<u>28583.6</u>	KDS-DEG 21-22 GR	4044211215385	10 ST



Seal, Mounting type: Plug in, Length x width: 42.8 mm, Max. cable diameter: 23 mm, IP 66, Colour: Grey

Article number	Article name	GTIN (EAN)	Packaging unit
<u>28584.6</u>	KDS-DEG 22-23 GR	4044211215408	10 ST



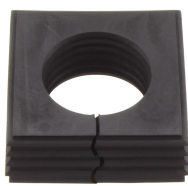
Seal, Mounting type: Plug in, Length x width: 42.8 mm, Max. cable diameter: 25 mm, IP 66, Colour: Black

Article number	Article name	GTIN (EAN)	Packaging unit
<u>28545.4</u>	KDS-DEG 24-25 BK	4044211215453	10 ST



Seal, Mounting type: Plug in, Length x width: 42.8 mm, Max. cable diameter: 26 mm, IP 66, Colour: Black

Article number	Article name	GTIN (EAN)	Packaging unit
<u>28546.4</u>	KDS-DEG 25-26 BK	4044211215460	10 ST



Seal, Mounting type: Plug in, Length x width: 42.8 mm, Max. cable diameter: 27 mm, IP 66, Colour: Black

Article number	Article name	GTIN (EAN)	Packaging unit
<u>28547.4</u>	KDS-DEG 26-27 BK	4044211215491	10 ST

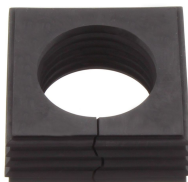


Seal, Mounting type: Plug in, Length x width: 42.8 mm, Max. cable diameter: 28 mm, IP 66, Colour: Black

Article number	Article name	GTIN (EAN)	Packaging unit
<u>28548.4</u>	KDS-DEG 27-28 BK	4044211215514	10 ST

## 28518.4 KDS-Inlay 4 BK

### ##INVERSE##CONTA-CABLE



Seal, Mounting type: Plug in, Length x width: 42.8 mm, Max. cable diameter: 29 mm, IP 66, Colour: Black

Article number	Article name	GTIN (EAN)	Packaging unit
<u>28549.4</u>	KDS-DEG 28-29 BK	4044211215538	10 ST



Seal, Mounting type: Plug in, Length x width: 42.8 mm, Max. cable diameter: 30 mm, IP 66, Colour: Black

Article number	Article name	GTIN (EAN)	Packaging unit
<u>28550.4</u>	KDS-DEG 29-30 BK	4044211215552	10 ST



Seal, Mounting type: Plug in, Length x width: 42.8 mm, Max. cable diameter: 31 mm, IP 66, Colour: Black

Article number	Article name	GTIN (EAN)	Packaging unit
<u>28551.4</u>	KDS-DEG 30-31 BK	4044211215576	10 ST



Seal, Mounting type: Plug in, Length x width: 42.8 mm, Max. cable diameter: 32 mm, IP 66, Colour: Black

Article number	Article name	GTIN (EAN)	Packaging unit
<u>28552.4</u>	KDS-DEG 31-32 BK	4044211215590	10 ST



Seal, Mounting type: Plug in, Length x width: 42.8 mm, Max. cable diameter: 18 mm, IP 66, Colour: Grey

Article number	Article name	GTIN (EAN)	Packaging unit
<u>28579.6</u>	KDS-DEG 17-18 GR	4044211215309	10 ST



Seal, Mounting type: Plug in, Length x width: 42.8 mm, Max. cable diameter: 19 mm, IP 66, Colour: Grey

Article number	Article name	GTIN (EAN)	Packaging unit
<u>28580.6</u>	KDS-DEG 18-19 GR	4044211215323	10 ST

## 28518.4 KDS-Inlay 4 BK

### ##INVERSE##CONTA-CABLE



Seal dummy, Mounting type: Plug in, Length x width: 42.8 mm, IP 66, Colour: Grey

Article number	Article name	GTIN (EAN)	Packaging unit
<u>28575.6</u>	KDS-DEG/B GR	4044211215248	10 ST



Seal, Mounting type: Plug in, Length x width: 42.8 mm, Max. cable diameter: 15 mm, IP 66, Colour: Grey

Article number	Article name	GTIN (EAN)	Packaging unit
<u>28576.6</u>	KDS-DEG 14-15 GR	4044211209971	10 ST



Seal, Mounting type: Plug in, Length x width: 42.8 mm, Max. cable diameter: 16 mm, IP 66, Colour: Grey

Article number	Article name	GTIN (EAN)	Packaging unit
<u>28577.6</u>	KDS-DEG 15-16 GR	4044211215262	10 ST



Seal, Mounting type: Plug in, Length x width: 42.8 mm, Max. cable diameter: 17 mm, IP 66, Colour: Grey

Article number	Article name	GTIN (EAN)	Packaging unit
<u>28578.6</u>	KDS-DEG 16-17 GR	4044211215286	10 ST



Seal, Mounting type: Plug in, Length x width: 42.8 mm, Max. cable diameter: 32 mm, IP 66, Colour: Grey

Article number	Article name	GTIN (EAN)	Packaging unit
<u>28593.6</u>	KDS-DEG 31-32 GR	4044211215583	10 ST



Seal, Mounting type: Plug in, Length x width: 42.8 mm, Max. cable diameter: 33 mm, IP 66, Colour: Grey

Article number	Article name	GTIN (EAN)	Packaging unit
<u>28594.6</u>	KDS-DEG 32-33 GR	4044211215606	10 ST

## 28518.4 KDS-Inlay 4 BK

### ##INVERSE##CONTA-CABLE



Seal, Mounting type: Plug in, Length x width: 42.8 mm, Max. cable diameter: 23 mm, IP 66, Colour: Black

Article number	Article name	GTIN (EAN)	Packaging unit
<u>28543.4</u>	KDS-DEG 22-23 BK	4044211215415	10 ST



Seal, Mounting type: Plug in, Length x width: 42.8 mm, Max. cable diameter: 24 mm, IP 66, Colour: Black

Article number	Article name	GTIN (EAN)	Packaging unit
<u>28554.4</u>	KDS-DEG/K 7-24 BK	4044211216108	10 ST



Seal, Mounting type: Plug in, Length x width: 42.8 mm, Max. cable diameter: 24 mm, IP 66, Colour: Grey

Article number	Article name	GTIN (EAN)	Packaging unit
<u>28585.6</u>	KDS-DEG 23-24 GR	4044211215422	10 ST



Seal, Mounting type: Plug in, Length x width: 42.8 mm, Max. cable diameter: 25 mm, IP 66, Colour: Grey

Article number	Article name	GTIN (EAN)	Packaging unit
<u>28586.6</u>	KDS-DEG 24-25 GR	4044211215446	10 ST



Seal, Mounting type: Plug in, Length x width: 42.8 mm, Max. cable diameter: 26 mm, IP 66, Colour: Grey

Article number	Article name	GTIN (EAN)	Packaging unit
<u>28587.6</u>	KDS-DEG 25-26 GR	4044211215477	10 ST



Seal, Mounting type: Plug in, Length x width: 42.8 mm, Max. cable diameter: 27 mm, IP 66, Colour: Grey

Article number	Article name	GTIN (EAN)	Packaging unit
<u>28588.6</u>	KDS-DEG 26-27 GR	4044211215484	10 ST

## 28518.4 KDS-Inlay 4 BK

### ##INVERSE##CONTA-CABLE



Seal, Mounting type: Plug in, Length x width: 42.8 mm, Max. cable diameter: 28 mm, IP 66, Colour: Grey

Article number	Article name	GTIN (EAN)	Packaging unit
<u>28589.6</u>	KDS-DEG 27-28 GR	4044211215507	10 ST



Seal, Mounting type: Plug in, Length x width: 42.8 mm, Max. cable diameter: 29 mm, IP 66, Colour: Grey

Article number	Article name	GTIN (EAN)	Packaging unit
<u>28590.6</u>	KDS-DEG 28-29 GR	4044211215521	10 ST



Seal, Mounting type: Plug in, Length x width: 42.8 mm, Max. cable diameter: 30 mm, IP 66, Colour: Grey

Article number	Article name	GTIN (EAN)	Packaging unit
<u>28591.6</u>	KDS-DEG 29-30 GR	4044211215545	10 ST



Seal, Mounting type: Plug in, Length x width: 42.8 mm, Max. cable diameter: 31 mm, IP 66, Colour: Grey

Article number	Article name	GTIN (EAN)	Packaging unit
<u>28592.6</u>	KDS-DEG 30-31 GR	4044211215569	10 ST



Seal, Mounting type: Plug in, Length x width: 42.8 mm, Max. cable diameter: 19 mm, IP 66, Colour: Black

Article number	Article name	GTIN (EAN)	Packaging unit
<u>28539.4</u>	KDS-DEG 18-19 BK	4044211215330	10 ST



Seal, Mounting type: Plug in, Length x width: 42.8 mm, Max. cable diameter: 21 mm, IP 66, Colour: Black

Article number	Article name	GTIN (EAN)	Packaging unit
<u>28541.4</u>	KDS-DEG 20-21 BK	4044211215378	10 ST



## 28518.4 KDS-Inlay 4 BK

### ##INVERSE##CONTA-CABLE



Seal, Mounting type: Plug in, Length x width: 42.8 mm, Max. cable diameter: 22 mm, IP 66, Colour: Black

Article number	Article name	GTIN (EAN)	Packaging unit
<u>28542.4</u>	KDS-DEG 21-22 BK	4044211215392	10 ST



Seal, Mounting type: Plug in, Length x width: 20.3 mm, Max. cable diameter: 7 mm, IP 66, Colour: Grey

Article number	Article name	GTIN (EAN)	Packaging unit
<u>28567.6</u>	KDS-DE 6-7 GR	4044211211059	10 ST



Seal, Mounting type: Plug in, Length x width: 20.3 mm, Max. cable diameter: 8 mm, IP 66, Colour: Grey

Article number	Article name	GTIN (EAN)	Packaging unit
<u>28568.6</u>	KDS-DE 7-8 GR	4044211211066	10 ST



Seal, Mounting type: Plug in, Length x width: 20.3 mm, Max. cable diameter: 9 mm, IP 66, Colour: Grey

Article number	Article name	GTIN (EAN)	Packaging unit
<u>28569.6</u>	KDS-DE 8-9 GR	4044211211073	10 ST



Seal, Mounting type: Plug in, Length x width: 20.3 mm, Max. cable diameter: 10 mm, IP 66, Colour: Grey

Article number	Article name	GTIN (EAN)	Packaging unit
<u>28570.6</u>	KDS-DE 9-10 GR	4044211211080	10 ST



Seal, Mounting type: Plug in, Length x width: 20.3 mm, Max. cable diameter: 11 mm, IP 66, Colour: Grey

Article number	Article name	GTIN (EAN)	Packaging unit
<u>28571.6</u>	KDS-DE 10-11 GR	4044211211097	10 ST

## 28518.4 KDS-Inlay 4 BK

### ##INVERSE##CONTA-CABLE



Seal, Mounting type: Plug in, Length x width: 20.3 mm, Max. cable diameter: 12 mm, IP 66, Colour: Grey

Article number	Article name	GTIN (EAN)	Packaging unit
<u>28572.6</u>	KDS-DE 11-12 GR	4044211211103	10 ST



Seal, Mounting type: Plug in, Length x width: 20.3 mm, Max. cable diameter: 13 mm, IP 66, Colour: Grey

Article number	Article name	GTIN (EAN)	Packaging unit
<u>28573.6</u>	KDS-DE 12-13 GR	4044211215224	10 ST



Seal, Mounting type: Plug in, Length x width: 20.3 mm, Max. cable diameter: 3 mm, IP 66, Colour: Grey

Article number	Article name	GTIN (EAN)	Packaging unit
<u>28563.6</u>	KDS-DE 2-3 GR	4044211211011	10 ST



Seal, Mounting type: Plug in, Length x width: 20.3 mm, Max. cable diameter: 4 mm, IP 66, Colour: Grey

Article number	Article name	GTIN (EAN)	Packaging unit
<u>28564.6</u>	KDS-DE 3-4 GR	4044211211028	10 ST



Seal, Mounting type: Plug in, Length x width: 20.3 mm, Max. cable diameter: 5 mm, IP 66, Colour: Grey

Article number	Article name	GTIN (EAN)	Packaging unit
<u>28565.6</u>	KDS-DE 4-5 GR	4044211211035	10 ST



Seal, Mounting type: Plug in, Length x width: 20.3 mm, Max. cable diameter: 6 mm, IP 66, Colour: Grey

Article number	Article name	GTIN (EAN)	Packaging unit
<u>28566.6</u>	KDS-DE 5-6 GR	4044211211042	10 ST



## 28518.4 KDS-Inlay 4 BK

### ##INVERSE##CONTA-CABLE



Seal, Mounting type: Plug in, Length x width: 20.3 mm, Max. cable diameter: 14 mm, IP 66, Colour: Grey

Article number	Article name	GTIN (EAN)	Packaging unit
<u>28574.6</u>	KDS-DE 13-14 GR	4044211215231	10 ST



Seal, Mounting type: Plug in, Length x width: 20.3 mm, Max. cable diameter: 5 mm, IP 66, Colour: Grey

Article number	Article name	GTIN (EAN)	Packaging unit
<u>28595.6</u>	KDS-DE 2X4-5 GR	4044211215682	10 ST



Seal, Mounting type: Plug in, Length x width: 20.3 mm, Max. cable diameter: 6 mm, IP 66, Colour: Grey

Article number	Article name	GTIN (EAN)	Packaging unit
<u>28596.6</u>	KDS-DE 2X5-6 GR	4044211215699	10 ST



Seal, Mounting type: Plug in, Length x width: 20.3 mm, Max. cable diameter: 3 mm, IP 66, Colour: Grey

Article number	Article name	GTIN (EAN)	Packaging unit
<u>28597.6</u>	KDS-DE 4X2-3 GR	4044211215705	10 ST



Seal, Mounting type: Plug in, Length x width: 20.3 mm, Max. cable diameter: 4 mm, IP 66, Colour: Grey

Article number	Article name	GTIN (EAN)	Packaging unit
<u>28598.6</u>	KDS-DE 4X3-4 GR	4044211215712	10 ST



Seal, Mounting type: Plug in, Length x width: 20.3 mm, IP 66, Colour: Grey

Article number	Article name	GTIN (EAN)	Packaging unit
<u>28599.6</u>	KDS-DE/1XASI GR	4044211215729	10 ST

## 28518.4 KDS-Inlay 4 BK

### ##INVERSE##CONTA-CABLE



Seal, Mounting type: Plug in, Length x width: 20.3 mm, IP 66, Colour: Black

Article number	Article name	GTIN (EAN)	Packaging unit
<u>28560.4</u>	KDS-DE/2XASI BK	4044211215675	10 ST



Seal dummy, Mounting type: Plug in, Length x width: 20.3 mm, IP 66, Colour: Grey

Article number	Article name	GTIN (EAN)	Packaging unit
<u>28561.6</u>	KDS-DE/B GR	4044211211004	10 ST



Seal, Mounting type: Plug in, Length x width: 20.3 mm, Max. cable diameter: 2 mm, IP 66, Colour: Grey

Article number	Article name	GTIN (EAN)	Packaging unit
<u>28562.6</u>	KDS-DE 1,5-2 GR	4044211209988	10 ST



Seal, Mounting type: Plug in, Length x width: 20.3 mm, Max. cable diameter: 6.5 mm, IP 66, Colour: Black

Article number	Article name	GTIN (EAN)	Packaging unit
<u>28682.4</u>	KDS-DE 2X6,5 BK	4044211219536	10 ST



Seal, Mounting type: Plug in, Length x width: 20.3 mm, Max. cable diameter: 6.5 mm, IP 66, Colour: Black

Article number	Article name	GTIN (EAN)	Packaging unit
<u>28687.4</u>	KDS-DE 3X5-6 BK	4044211220501	10 ST



Seal, Mounting type: Plug in, Length x width: 20.3 mm, Max. cable diameter: 2 mm, IP 66, Colour: Grey

Article number	Article name	GTIN (EAN)	Packaging unit
<u>28696.6</u>	KDS-DE 2 GR	4044211220884	10 ST

## 28518.4 KDS-Inlay 4 BK

### ##INVERSE##CONTA-CABLE



Seal, Mounting type: Plug in, Length x width: 20.3 mm, Max. cable diameter: 3 mm, IP66, Colour: Black

Article number	Article name	GTIN (EAN)	Packaging unit
<u>28697.4</u>	KDS-DE 3 BK	4044211220891	10 ST



Seal, Mounting type: Plug in, Length x width: 20.3 mm, Max. cable diameter: 3 mm, IP 66, Colour: Grey

Article number	Article name	GTIN (EAN)	Packaging unit
<u>28698.6</u>	KDS-DE 3 GR	4044211220907	10 ST



Seal, Mounting type: Plug in, Length x width: 20.3 mm, IP 66, Colour: Grey

Article number	Article name	GTIN (EAN)	Packaging unit
<u>28600.6</u>	KDS-DE/2XASI GR	4044211215736	10 ST



Seal, Mounting type: Plug in, Length x width: 20.3 mm, Max. cable diameter: 4.5 mm, IP 66, Colour: Grey

Article number	Article name	GTIN (EAN)	Packaging unit
<u>28606.6</u>	KDS-DE 4X4,5 GR	4044211216252	10 ST



Seal, Mounting type: Plug in, Length x width: 20.3 mm, Max. cable diameter: 6.5 mm, IP 66, Colour: Grey

Article number	Article name	GTIN (EAN)	Packaging unit
<u>28607.6</u>	KDS-DE 2X6,5 GR	4044211216238	10 ST



Seal, Mounting type: Plug in, Length x width: 20.3 mm, Max. cable diameter: 15 mm, IP 66, Colour: Black

Article number	Article name	GTIN (EAN)	Packaging unit
<u>28608.4</u>	KDS-DE 14-15 BK	4044211219314	10 ST

## 28518.4 KDS-Inlay 4 BK

### ##INVERSE##CONTA-CABLE



Seal, Mounting type: Plug in, Length x width: 20.3 mm, Max. cable diameter: 15 mm, IP 66, Colour: Grey

Article number	Article name	GTIN (EAN)	Packaging unit
<u>28609.6</u>	KDS-DE 14-15 GR	4044211219307	10 ST



Seal, Mounting type: Plug in, Length x width: 20.3 mm, Max. cable diameter: 16 mm, IP 66, Colour: Black

Article number	Article name	GTIN (EAN)	Packaging unit
<u>28670.4</u>	KDS-DE 15-16 BK	4044211219321	10 ST



Seal, Mounting type: Plug in, Length x width: 20.3 mm, Max. cable diameter: 17 mm, IP 66, Colour: Grey

Article number	Article name	GTIN (EAN)	Packaging unit
<u>28671.6</u>	KDS-DE 15-16 GR	4044211219338	10 ST



Seal, Mounting type: Plug in, Length x width: 20.3 mm, Max. cable diameter: 5 mm, IP 66, Colour: Black

Article number	Article name	GTIN (EAN)	Packaging unit
<u>28672.4</u>	KDS-DE 4X5 BK	4044211219345	10 ST



Seal, Mounting type: Plug in, Length x width: 20.3 mm, Max. cable diameter: 5 mm, IP 66, Colour: Grey

Article number	Article name	GTIN (EAN)	Packaging unit
<u>28673.6</u>	KDS-DE 4X5 GR	4044211219352	10 ST



Seal, Mounting type: Plug in, Length x width: 20.3 mm, Max. cable diameter: 4.5 mm, IP 66, Colour: Black

Article number	Article name	GTIN (EAN)	Packaging unit
<u>28681.4</u>	KDS-DE 4X4,5 BK	4044211219543	10 ST

## 28518.4 KDS-Inlay 4 BK

### ##INVERSE##CONTA-CABLE



Seal, Mounting type: Plug in, Length x width: 20.3 mm, Max. cable diameter: 11 mm, IP 66, Colour: Black

Article number	Article name	GTIN (EAN)	Packaging unit
<u>28530.4</u>	KDS-DE 10-11 BK	4044211210960	10 ST



Seal, Mounting type: Plug in, Length x width: 20.3 mm, Max. cable diameter: 12 mm, IP 66, Colour: Black

Article number	Article name	GTIN (EAN)	Packaging unit
<u>28531.4</u>	KDS-DE 11-12 BK	4044211210977	10 ST



Seal, Mounting type: Plug in, Length x width: 20.3 mm, Max. cable diameter: 13 mm, IP 66, Colour: Black

Article number	Article name	GTIN (EAN)	Packaging unit
<u>28532.4</u>	KDS-DE 12-13 BK	4044211210984	10 ST



Seal, Mounting type: Plug in, Length x width: 20.3 mm, Max. cable diameter: 14 mm, IP 66, Colour: Black

Article number	Article name	GTIN (EAN)	Packaging unit
<u>28533.4</u>	KDS-DE 13-14 BK	4044211210991	10 ST



Seal, Mounting type: Plug in, Length x width: 20.3 mm, Max. cable diameter: 11 mm, IP 66, Colour: Black

Article number	Article name	GTIN (EAN)	Packaging unit
<u>28553.4</u>	KDS-DE/K 2-11 BK	4044211216092	10 ST



Seal, Mounting type: Plug in, Length x width: 20.3 mm, Max. cable diameter: 5 mm, IP 66, Colour: Black

Article number	Article name	GTIN (EAN)	Packaging unit
<u>28555.4</u>	KDS-DE 2X4-5 BK	4044211215620	10 ST

## 28518.4 KDS-Inlay 4 BK

### ##INVERSE##CONTA-CABLE



Seal, Mounting type: Plug in, Length x width: 20.3 mm, Max. cable diameter: 6 mm, IP 66, Colour: Black

Article number	Article name	GTIN (EAN)	Packaging unit
<u>28556.4</u>	KDS-DE 2X5-6 BK	4044211215637	10 ST



Seal, Mounting type: Plug in, Length x width: 20.3 mm, Max. cable diameter: 3 mm, IP 66, Colour: Black

Article number	Article name	GTIN (EAN)	Packaging unit
<u>28557.4</u>	KDS-DE 4X2-3 BK	4044211215644	10 ST



Seal, Mounting type: Plug in, Length x width: 20.3 mm, Max. cable diameter: 4 mm, IP 66, Colour: Black

Article number	Article name	GTIN (EAN)	Packaging unit
<u>28558.4</u>	KDS-DE 4X3-4 BK	4044211215651	10 ST



Seal, Mounting type: Plug in, Length x width: 20.3 mm, IP 66, Colour: Black

Article number	Article name	GTIN (EAN)	Packaging unit
<u>28559.4</u>	KDS-DE/1XASI BK	4044211215668	10 ST



Seal dummy, Mounting type: Plug in, Length x width: 20.3 mm, IP 66, Colour: Black

Article number	Article name	GTIN (EAN)	Packaging unit
<u>28520.4</u>	KDS-DE/B BK	4044211210878	10 ST



Seal, Mounting type: Plug in, Length x width: 20.3 mm, Max. cable diameter: 2 mm, IP 66, Colour: Black

Article number	Article name	GTIN (EAN)	Packaging unit
<u>28521.4</u>	KDS-DE 1,5-2 BK	4044211210007	10 ST



## 28518.4 KDS-Inlay 4 BK

### ##INVERSE##CONTA-CABLE



Seal, Mounting type: Plug in, Length x width: 20.3 mm, Max. cable diameter: 3 mm, IP66, Colour: Black

Article number	Article name	GTIN (EAN)	Packaging unit
<u>28522.4</u>	KDS-DE 2-3 BK	4044211210885	10 ST



Seal, Mounting type: Plug in, Length x width: 20.3 mm, Max. cable diameter: 4 mm, IP 66, Colour: Black

Article number	Article name	GTIN (EAN)	Packaging unit
<u>28523.4</u>	KDS-DE 3-4 BK	4044211210892	10 ST



Seal, Mounting type: Plug in, Length x width: 20.3 mm, Max. cable diameter: 5 mm, IP 66, Colour: Black

Article number	Article name	GTIN (EAN)	Packaging unit
<u>28524.4</u>	KDS-DE 4-5 BK	4044211210908	10 ST



Seal, Mounting type: Plug in, Length x width: 20.3 mm, Max. cable diameter: 6 mm, IP 66, Colour: Black

Article number	Article name	GTIN (EAN)	Packaging unit
<u>28525.4</u>	KDS-DE 5-6 BK	4044211210915	10 ST



Seal, Mounting type: Plug in, Length x width: 20.3 mm, Max. cable diameter: 7 mm, IP 66, Colour: Black

Article number	Article name	GTIN (EAN)	Packaging unit
<u>28526.4</u>	KDS-DE 6-7 BK	4044211210922	10 ST



Seal, Mounting type: Plug in, Length x width: 20.3 mm, Max. cable diameter: 8 mm, IP 66, Colour: Black

Article number	Article name	GTIN (EAN)	Packaging unit
<u>28527.4</u>	KDS-DE 7-8 BK	4044211210939	10 ST

## 28518.4 KDS-Inlay 4 BK

### ##INVERSE##CONTA-CABLE



Seal, Mounting type: Plug in, Length x width: 20.3 mm, Max. cable diameter: 9 mm, IP 66, Colour: Black

Article number	Article name	GTIN (EAN)	Packaging unit
<u>28528.4</u>	KDS-DE 8-9 BK	4044211210946	10 ST



Seal, Mounting type: Plug in, Length x width: 20.3 mm, Max. cable diameter: 10 mm, IP 66, Colour: Black

Article number	Article name	GTIN (EAN)	Packaging unit
<u>28529.4</u>	KDS-DE 9-10 BK	4044211210953	10 ST



Seal, Mounting type: Plug in, Length x width: 20.3 mm, Max. cable diameter: 6 mm, IP 66, Colour: Grey

Article number	Article name	GTIN (EAN)	Packaging unit
<u>28688.6</u>	KDS-DE 3X5-6 GR	4044211220518	10 ST



Seal, Mounting type: Plug in, Length x width: 20.3 mm, Max. cable diameter: 7 mm, IP 66, Colour: Black

Article number	Article name	GTIN (EAN)	Packaging unit
<u>28689.4</u>	KDS-DE 2X7 BK	4044211220815	10 ST



Seal, Mounting type: Plug in, Length x width: 20.3 mm, Max. cable diameter: 7 mm, IP 66, Colour: Grey

Article number	Article name	GTIN (EAN)	Packaging unit
<u>28690.6</u>	KDS-DE 2X7 GR	4044211220822	10 ST



Seal, Mounting type: Plug in, Length x width: 20.3 mm, Max. cable diameter: 8 mm, IP 66, Colour: Black

Article number	Article name	GTIN (EAN)	Packaging unit
<u>28691.4</u>	KDS-DE 2X8 BK	4044211220839	10 ST



## 28518.4 KDS-Inlay 4 BK

### ##INVERSE##CONTA-CABLE



Seal, Mounting type: Plug in, Length x width: 20.3 mm, Max. cable diameter: 8 mm, IP 66, Colour: Grey

Article number	Article name	GTIN (EAN)	Packaging unit
<u>28692.6</u>	KDS-DE 2X8 GR	4044211220846	10 ST



Seal, Mounting type: Plug in, Length x width: 20.3 mm, Max. cable diameter: 1.5 mm, IP 66, Colour: Black

Article number	Article name	GTIN (EAN)	Packaging unit
<u>28693.4</u>	KDS-DE 1,5 BK	4044211220853	10 ST



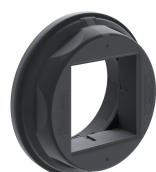
Seal, Mounting type: Plug in, Length x width: 20.3 mm, Max. cable diameter: 1.5 mm, IP 66, Colour: Grey

Article number	Article name	GTIN (EAN)	Packaging unit
<u>28694.6</u>	KDS-DE 1,5 GR	4044211220860	10 ST



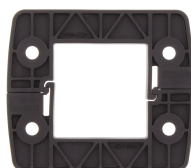
Seal, Mounting type: Plug in, Length x width: 20.3 mm, Max. cable diameter: 2 mm, IP 66, Colour: Black

Article number	Article name	GTIN (EAN)	Packaging unit
<u>28695.4</u>	KDS-DE 2 BK	4044211220877	10 ST



Round cable entry, Material: polyamide PA 6.6, glass-fibre reinforced | TPE, Colour: Black

Article number	Article name	GTIN (EAN)	Packaging unit
<u>28774.4</u>	KDS-R 40-63 BK	4044211234546	5 ST



Inner locking frame, Length: 80 mm, Height: 11.5 mm, Colour: Black

Article number	Article name	GTIN (EAN)	Packaging unit
<u>28507.4</u>	KDS-IVR 1-4 BK	4044211210830	10 ST

## 28518.4 KDS-Inlay 4 BK

### ##INVERSE##CONTA-CABLE

Inner locking frame, Length: 152 mm, Height: 11.5 mm, Colour: Black



Article number	Article name	GTIN (EAN)	Packaging unit
<u>28505.4</u>	KDS-IVR 10/24 BK	4044211210816	10 ST

Inner locking frame, Length: 152 mm, Height: 11.5 mm, Colour: Black



Article number	Article name	GTIN (EAN)	Packaging unit
<u>28505.4</u>	KDS-IVR 10/24 BK	4044211210816	10 ST

Cable entry with foamed-in seal, Mounting type: Screws, Length: 153 mm, Width: 70 mm, IP 66, Colour: Black



Article number	Article name	GTIN (EAN)	Packaging unit
<u>28504.4</u>	KDS-SR 10/24 BK	4044211210809	1 ST

Cable entry with foamed-in seal, Mounting type: Screws, Length: 126 mm, Width: 70 mm, IP 66, Colour: Black



Article number	Article name	GTIN (EAN)	Packaging unit
<u>28502.4</u>	KDS-SR 8/16 BK	4044211210786	1 ST

Cable entry with foamed-in seal, Mounting type: Screws, Length: 81 mm, Width: 70 mm, IP 66, Colour: Black



Article number	Article name	GTIN (EAN)	Packaging unit
<u>28506.4</u>	KDS-SR 1-4 BK	4044211210823	1 ST

Cable entry with TPE seal, Mounting type: Screws, Length: 81 mm, Width: 64 mm, IP 66, Colour: Black



Article number	Article name	GTIN (EAN)	Packaging unit
<u>28880.4</u>	KDSI-SR 1-4 BK	4044211243807	1 ST

## 28518.4 KDS-Inlay 4 BK

### ##INVERSE##CONTA-CABLE



Cable entry with TPE seal, Mounting type: Screws, Length: 153 mm, Width: 64 mm, IP66, Colour: Black

Article number	Article name	GTIN (EAN)	Packaging unit
<a href="#">28883.4</a>	KDSI-SR 10/24 BK	4044211242107	1 ST



Cable entry set, IP66, Consisting of: 1 x KDSI-SR 1-4 BK, 1 x KDS-Inlay 4 BK

Article number	Article name	GTIN (EAN)	Packaging unit
<a href="#">28890.4</a>	KDSI-SET 1-4 BK	4044211242152	1 ST



Cable entry set, IP66, Consisting of: 1xKDSI-SR 6/10, 1xKDS-Inlay 2, 1xKDS-Inlay 6

Article number	Article name	GTIN (EAN)	Packaging unit
<a href="#">28891.4</a>	KDSI-SET 6/10 BK	4044211242169	1 ST



Cable entry set, IP66, Consisting of: 1xKDSI-SR 8/16, 2xKDS-Inlay 4

Article number	Article name	GTIN (EAN)	Packaging unit
<a href="#">28892.4</a>	KDSI-SET 8/16 BK	4044211242176	1 ST



Cable entry set, IP66, Consisting of: 1xKDSI-SR 10/24, each 1xKDS-Inlay 2,4,6

Article number	Article name	GTIN (EAN)	Packaging unit
<a href="#">28893.4</a>	KDSI-SET 10/24 BK	4044211242183	1 ST

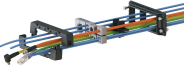


Cable entry set, IP66, Consisting of: 1xKDSI-SR 10/24, each 1xKDS-Inlay 2,4,6

Article number	Article name	GTIN (EAN)	Packaging unit
<a href="#">28893.4</a>	KDSI-SET 10/24 BK	4044211242183	1 ST

##INVERSE##CONTA-CABLE

Cable entry with TPE seal, Mounting type: Screws, Length: 106 mm, Width: 64 mm, IP66,  
Colour: Black



Article number	Article name	GTIN (EAN)	Packaging unit
<u>28881.4</u>	KDSI-SR 6/10 BK	4044211242084	1 ST