



Cable entry with foamed-in seal, Mounting type: Screws, Length: 81 mm, Width: 70 mm, IP 66, Colour: Black

RAL: 9005

Kaufmännische Daten

Artikelnummer	28506.4
Artikelbezeichnung	KDS-SR 1-4 BK
GTIN (EAN)	4044211210823
Packaging unit	1
Quantity unit	PC
Weight per piece (not including packaging)	40.4 g
Weight per piece (including packaging)	59.4 g
Unit of weight	G
Customs number	39259020
Country of origin	DE
Product description	Cable Entry
Colour	Black

Technische Daten

Dimensions

Length	81 mm
Length of wall cutout	46 mm
Width	70 mm
Width of wall cutout	46 mm
Height	19.6 mm
Installation height	19.6 mm
Diameter of the screw holes	5.5 mm

Materials

Material	Polyamide 6.6
Glass-fibre reinforced	✓
Flammability class UL 94	V-0
Working temperature, min.	-40 °C
Working temperature, max.	120 °C
Sealing material	Polyurethane-based
Type of seal	Sealing and moulded flexible foam
Halogen-free	✓
Silicone-free	✓

Further technical data

Mounting type	Screws
Degree of protection	IP66
NEMA Type	1, 12, 4x (indoor use only)
Number of screw holes	4
Fixing screws	M 5 (ISO 4762 / DIN 912)
Torque of the fixing screws	3 Nm

Environmental Product Compliance

REACH Conform	yes
REACH Reference date	2023-06-14
REACH Candidate Substance Note	No
RoHS Conform	yes

Zulassungen

cUL Recognized

cUL approval	C22.2 No. 14-18
cUL File Number	E489821
cUL Recognized	1

UL Recognized

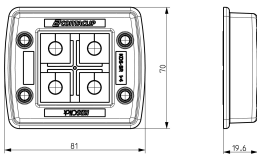
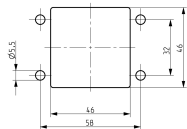
UL approval	UL 508A
UL File Number	E489821
UL Recognized	1
UL Type Rating	1, 12, 4x (indoor use only)

German Lloyd approval

DNV GL Certificate number	TAE00003V7
DNV GL Location Classes	Temperature: -40°C to 120°C, Humidity: B, Vibration: B, Ingress protection: IP66
DNV GL approval granted	1

Datenblatt
28506.4 KDS-SR 1-4 BK

Medien



Zubehör

Inlays



Cable entry, Inlay, Mounting type: Plug in, IP 66, Colour: Black

Artikelnummer	Artikelbezeichnung	GTIN (EAN)	VPE
<u>28516.4</u>	KDS-Inlay 1 BK	4044211210847	5 ST



Cable entry, Inlay, Mounting type: Plug in, IP 66, Colour: Black

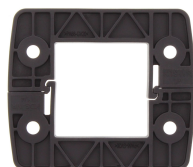
Artikelnummer	Artikelbezeichnung	GTIN (EAN)	VPE
<u>28517.4</u>	KDS-Inlay 2 BK	4044211210854	5 ST



Cable entry, Inlay, Mounting type: Plug in, IP 66, Colour: Black

Artikelnummer	Artikelbezeichnung	GTIN (EAN)	VPE
<u>28518.4</u>	KDS-Inlay 4 BK	4044211210861	5 ST

Locking frame



Inner locking frame, Length: 80 mm, Height: 11.5 mm, Colour: Black

Artikelnummer	Artikelbezeichnung	GTIN (EAN)	VPE
<u>28507.4</u>	KDS-IVR 1-4 BK	4044211210830	10 ST

Big Seals



Seal, Mounting type: Plug in, Length x width: 42.8 mm, Max. cable diameter: 20 mm, IP 66, Colour: Black

Artikelnummer	Artikelbezeichnung	GTIN (EAN)	VPE
<u>28540.4</u>	KDS-DEG 19-20 BK	4044211215354	10 ST



Seal, Mounting type: Plug in, Length x width: 42.8 mm, Max. cable diameter: 33 mm, IP 66, Colour: Black

Artikelnummer	Artikelbezeichnung	GTIN (EAN)	VPE
<u>28601.4</u>	KDS-DEG 32-33 BK	4044211215613	10 ST

Big Seals



Seal dummy, Mounting type: Plug in, Length x width: 42.8 mm, IP 66, Colour: Black

Artikelnummer	Artikelbezeichnung	GTIN (EAN)	VPE
<u>28534.4</u>	KDS-DEG/B BK	4044211215255	10 ST



Seal, Mounting type: Plug in, Length x width: 42.8 mm, Max. cable diameter: 15 mm, IP 66, Colour: Black

Artikelnummer	Artikelbezeichnung	GTIN (EAN)	VPE
<u>28535.4</u>	KDS-DEG 14-15 BK	4044211209995	10 ST



Seal, Mounting type: Plug in, Length x width: 42.8 mm, Max. cable diameter: 16 mm, IP 66, Colour: Black

Artikelnummer	Artikelbezeichnung	GTIN (EAN)	VPE
<u>28536.4</u>	KDS-DEG 15-16 BK	4044211215279	10 ST



Seal, Mounting type: Plug in, Length x width: 42.8 mm, Max. cable diameter: 17 mm, IP 66, Colour: Black

Artikelnummer	Artikelbezeichnung	GTIN (EAN)	VPE
<u>28537.4</u>	KDS-DEG 16-17 BK	4044211215293	10 ST



Seal, Mounting type: Plug in, Length x width: 42.8 mm, Max. cable diameter: 18 mm, IP 66, Colour: Black

Artikelnummer	Artikelbezeichnung	GTIN (EAN)	VPE
<u>28538.4</u>	KDS-DEG 17-18 BK	4044211215316	10 ST



Seal, Mounting type: Plug in, Length x width: 42.8 mm, Max. cable diameter: 24 mm, IP 66, Colour: Black

Artikelnummer	Artikelbezeichnung	GTIN (EAN)	VPE
<u>28544.4</u>	KDS-DEG 23-24 BK	4044211215439	10 ST



Seal, Mounting type: Plug in, Length x width: 42.8 mm, Max. cable diameter: 20 mm, IP 66, Colour: Grey

Artikelnummer	Artikelbezeichnung	GTIN (EAN)	VPE
<u>28581.6</u>	KDS-DEG 19-20 GR	4044211215347	10 ST

Big Seals



Seal, Mounting type: Plug in, Length x width: 42.8 mm, Max. cable diameter: 21 mm, IP 66, Colour: Grey

Artikelnummer	Artikelbezeichnung	GTIN (EAN)	VPE
<u>28582.6</u>	KDS-DEG 20-21 GR	4044211215361	10 ST



Seal, Mounting type: Plug in, Length x width: 42.8 mm, Max. cable diameter: 22 mm, IP 66, Colour: Grey

Artikelnummer	Artikelbezeichnung	GTIN (EAN)	VPE
<u>28583.6</u>	KDS-DEG 21-22 GR	4044211215385	10 ST



Seal, Mounting type: Plug in, Length x width: 42.8 mm, Max. cable diameter: 23 mm, IP 66, Colour: Grey

Artikelnummer	Artikelbezeichnung	GTIN (EAN)	VPE
<u>28584.6</u>	KDS-DEG 22-23 GR	4044211215408	10 ST



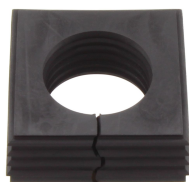
Seal, Mounting type: Plug in, Length x width: 42.8 mm, Max. cable diameter: 25 mm, IP 66, Colour: Black

Artikelnummer	Artikelbezeichnung	GTIN (EAN)	VPE
<u>28545.4</u>	KDS-DEG 24-25 BK	4044211215453	10 ST



Seal, Mounting type: Plug in, Length x width: 42.8 mm, Max. cable diameter: 26 mm, IP 66, Colour: Black

Artikelnummer	Artikelbezeichnung	GTIN (EAN)	VPE
<u>28546.4</u>	KDS-DEG 25-26 BK	4044211215460	10 ST



Seal, Mounting type: Plug in, Length x width: 42.8 mm, Max. cable diameter: 27 mm, IP 66, Colour: Black

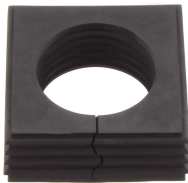
Artikelnummer	Artikelbezeichnung	GTIN (EAN)	VPE
<u>28547.4</u>	KDS-DEG 26-27 BK	4044211215491	10 ST



Seal, Mounting type: Plug in, Length x width: 42.8 mm, Max. cable diameter: 28 mm, IP 66, Colour: Black

Artikelnummer	Artikelbezeichnung	GTIN (EAN)	VPE
<u>28548.4</u>	KDS-DEG 27-28 BK	4044211215514	10 ST

Big Seals



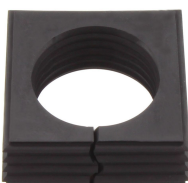
Seal, Mounting type: Plug in, Length x width: 42.8 mm, Max. cable diameter: 29 mm, IP 66, Colour: Black

Artikelnummer	Artikelbezeichnung	GTIN (EAN)	VPE
<u>28549.4</u>	KDS-DEG 28-29 BK	4044211215538	10 ST



Seal, Mounting type: Plug in, Length x width: 42.8 mm, Max. cable diameter: 30 mm, IP 66, Colour: Black

Artikelnummer	Artikelbezeichnung	GTIN (EAN)	VPE
<u>28550.4</u>	KDS-DEG 29-30 BK	4044211215552	10 ST



Seal, Mounting type: Plug in, Length x width: 42.8 mm, Max. cable diameter: 31 mm, IP 66, Colour: Black

Artikelnummer	Artikelbezeichnung	GTIN (EAN)	VPE
<u>28551.4</u>	KDS-DEG 30-31 BK	4044211215576	10 ST



Seal, Mounting type: Plug in, Length x width: 42.8 mm, Max. cable diameter: 32 mm, IP 66, Colour: Black

Artikelnummer	Artikelbezeichnung	GTIN (EAN)	VPE
<u>28552.4</u>	KDS-DEG 31-32 BK	4044211215590	10 ST



Seal, Mounting type: Plug in, Length x width: 42.8 mm, Max. cable diameter: 18 mm, IP 66, Colour: Grey

Artikelnummer	Artikelbezeichnung	GTIN (EAN)	VPE
<u>28579.6</u>	KDS-DEG 17-18 GR	4044211215309	10 ST



Seal, Mounting type: Plug in, Length x width: 42.8 mm, Max. cable diameter: 19 mm, IP 66, Colour: Grey

Artikelnummer	Artikelbezeichnung	GTIN (EAN)	VPE
<u>28580.6</u>	KDS-DEG 18-19 GR	4044211215323	10 ST



Seal dummy, Mounting type: Plug in, Length x width: 42.8 mm, IP 66, Colour: Grey

Artikelnummer	Artikelbezeichnung	GTIN (EAN)	VPE
<u>28575.6</u>	KDS-DEG/B GR	4044211215248	10 ST

Big Seals



Seal, Mounting type: Plug in, Length x width: 42.8 mm, Max. cable diameter: 15 mm, IP 66, Colour: Grey

Artikelnummer	Artikelbezeichnung	GTIN (EAN)	VPE
<u>28576.6</u>	KDS-DEG 14-15 GR	4044211209971	10 ST



Seal, Mounting type: Plug in, Length x width: 42.8 mm, Max. cable diameter: 16 mm, IP 66, Colour: Grey

Artikelnummer	Artikelbezeichnung	GTIN (EAN)	VPE
<u>28577.6</u>	KDS-DEG 15-16 GR	4044211215262	10 ST



Seal, Mounting type: Plug in, Length x width: 42.8 mm, Max. cable diameter: 17 mm, IP 66, Colour: Grey

Artikelnummer	Artikelbezeichnung	GTIN (EAN)	VPE
<u>28578.6</u>	KDS-DEG 16-17 GR	4044211215286	10 ST



Seal, Mounting type: Plug in, Length x width: 42.8 mm, Max. cable diameter: 32 mm, IP 66, Colour: Grey

Artikelnummer	Artikelbezeichnung	GTIN (EAN)	VPE
<u>28593.6</u>	KDS-DEG 31-32 GR	4044211215583	10 ST



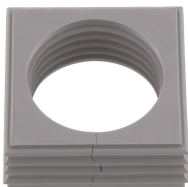
Seal, Mounting type: Plug in, Length x width: 42.8 mm, Max. cable diameter: 33 mm, IP 66, Colour: Grey

Artikelnummer	Artikelbezeichnung	GTIN (EAN)	VPE
<u>28594.6</u>	KDS-DEG 32-33 GR	4044211215606	10 ST



Seal, Mounting type: Plug in, Length x width: 42.8 mm, Max. cable diameter: 34 mm, IP 66, Colour: Black

Artikelnummer	Artikelbezeichnung	GTIN (EAN)	VPE
<u>28730.4</u>	KDS-DEG 33-34 BK	4044211220969	10 ST



Seal, Mounting type: Plug in, Length x width: 42.8 mm, Max. cable diameter: 34 mm, IP 66, Colour: Grey

Artikelnummer	Artikelbezeichnung	GTIN (EAN)	VPE
<u>28731.6</u>	KDS-DEG 33-34 GR	4044211220976	10 ST

Big Seals



Seal, Mounting type: Plug in, Length x width: 42.8 mm, Max. cable diameter: 35 mm, IP 66, Colour: Black

Artikelnummer	Artikelbezeichnung	GTIN (EAN)	VPE
<u>28732.4</u>	KDS-DEG 34-35 BK	4044211220983	10 ST



Seal, Mounting type: Plug in, Length x width: 42.8 mm, Max. cable diameter: 35 mm, IP 66, Colour: Grey

Artikelnummer	Artikelbezeichnung	GTIN (EAN)	VPE
<u>28733.6</u>	KDS-DEG 34-35 GR	4044211220990	10 ST



Seal, Mounting type: Plug in, Length x width: 42.8 mm, Max. cable diameter: 23 mm, IP 66, Colour: Black

Artikelnummer	Artikelbezeichnung	GTIN (EAN)	VPE
<u>28543.4</u>	KDS-DEG 22-23 BK	4044211215415	10 ST



Seal, Mounting type: Plug in, Length x width: 42.8 mm, Max. cable diameter: 24 mm, IP 66, Colour: Black

Artikelnummer	Artikelbezeichnung	GTIN (EAN)	VPE
<u>28554.4</u>	KDS-DEG/K 7-24 BK	4044211216108	10 ST



Seal, Mounting type: Plug in, Length x width: 42.8 mm, Max. cable diameter: 24 mm, IP 66, Colour: Grey

Artikelnummer	Artikelbezeichnung	GTIN (EAN)	VPE
<u>28585.6</u>	KDS-DEG 23-24 GR	4044211215422	10 ST



Seal, Mounting type: Plug in, Length x width: 42.8 mm, Max. cable diameter: 25 mm, IP 66, Colour: Grey

Artikelnummer	Artikelbezeichnung	GTIN (EAN)	VPE
<u>28586.6</u>	KDS-DEG 24-25 GR	4044211215446	10 ST



Seal, Mounting type: Plug in, Length x width: 42.8 mm, Max. cable diameter: 26 mm, IP 66, Colour: Grey

Artikelnummer	Artikelbezeichnung	GTIN (EAN)	VPE
<u>28587.6</u>	KDS-DEG 25-26 GR	4044211215477	10 ST

Big Seals



Seal, Mounting type: Plug in, Length x width: 42.8 mm, Max. cable diameter: 27 mm, IP 66, Colour: Grey

Artikelnummer	Artikelbezeichnung	GTIN (EAN)	VPE
<u>28588.6</u>	KDS-DEG 26-27 GR	4044211215484	10 ST



Seal, Mounting type: Plug in, Length x width: 42.8 mm, Max. cable diameter: 28 mm, IP 66, Colour: Grey

Artikelnummer	Artikelbezeichnung	GTIN (EAN)	VPE
<u>28589.6</u>	KDS-DEG 27-28 GR	4044211215507	10 ST



Seal, Mounting type: Plug in, Length x width: 42.8 mm, Max. cable diameter: 29 mm, IP 66, Colour: Grey

Artikelnummer	Artikelbezeichnung	GTIN (EAN)	VPE
<u>28590.6</u>	KDS-DEG 28-29 GR	4044211215521	10 ST



Seal, Mounting type: Plug in, Length x width: 42.8 mm, Max. cable diameter: 30 mm, IP 66, Colour: Grey

Artikelnummer	Artikelbezeichnung	GTIN (EAN)	VPE
<u>28591.6</u>	KDS-DEG 29-30 GR	4044211215545	10 ST



Seal, Mounting type: Plug in, Length x width: 42.8 mm, Max. cable diameter: 31 mm, IP 66, Colour: Grey

Artikelnummer	Artikelbezeichnung	GTIN (EAN)	VPE
<u>28592.6</u>	KDS-DEG 30-31 GR	4044211215569	10 ST



Seal, Mounting type: Plug in, Length x width: 42.8 mm, Max. cable diameter: 19 mm, IP 66, Colour: Black

Artikelnummer	Artikelbezeichnung	GTIN (EAN)	VPE
<u>28539.4</u>	KDS-DEG 18-19 BK	4044211215330	10 ST



Seal, Mounting type: Plug in, Length x width: 42.8 mm, Max. cable diameter: 21 mm, IP 66, Colour: Black

Artikelnummer	Artikelbezeichnung	GTIN (EAN)	VPE
<u>28541.4</u>	KDS-DEG 20-21 BK	4044211215378	10 ST

28506.4 KDS-SR 1-4 BK

Big Seals



Seal, Mounting type: Plug in, Length x width: 42.8 mm, Max. cable diameter: 22 mm, IP 66, Colour: Black

Artikelnummer	Artikelbezeichnung	GTIN (EAN)	VPE
<u>28542.4</u>	KDS-DEG 21-22 BK	4044211215392	10 ST

##INVERSE##CONTA-CABLE



Seal, Mounting type: Plug in, Length x width: 42.8 mm, Max. cable diameter: 20 mm, IP 66, Colour: Black

Artikelnummer	Artikelbezeichnung	GTIN (EAN)	VPE
<u>28540.4</u>	KDS-DEG 19-20 BK	4044211215354	10 ST



Seal, Mounting type: Plug in, Length x width: 42.8 mm, Max. cable diameter: 33 mm, IP 66, Colour: Black

Artikelnummer	Artikelbezeichnung	GTIN (EAN)	VPE
<u>28601.4</u>	KDS-DEG 32-33 BK	4044211215613	10 ST



Seal dummy, Mounting type: Plug in, Length x width: 42.8 mm, IP 66, Colour: Black

Artikelnummer	Artikelbezeichnung	GTIN (EAN)	VPE
<u>28534.4</u>	KDS-DEG/B BK	4044211215255	10 ST



Seal, Mounting type: Plug in, Length x width: 42.8 mm, Max. cable diameter: 15 mm, IP 66, Colour: Black

Artikelnummer	Artikelbezeichnung	GTIN (EAN)	VPE
<u>28535.4</u>	KDS-DEG 14-15 BK	4044211209995	10 ST



Seal, Mounting type: Plug in, Length x width: 42.8 mm, Max. cable diameter: 16 mm, IP 66, Colour: Black

Artikelnummer	Artikelbezeichnung	GTIN (EAN)	VPE
<u>28536.4</u>	KDS-DEG 15-16 BK	4044211215279	10 ST

##INVERSE##CONTA-CABLE



Seal, Mounting type: Plug in, Length x width: 42.8 mm, Max. cable diameter: 17 mm, IP 66, Colour: Black

Artikelnummer	Artikelbezeichnung	GTIN (EAN)	VPE
<u>28537.4</u>	KDS-DEG 16-17 BK	4044211215293	10 ST



Seal, Mounting type: Plug in, Length x width: 42.8 mm, Max. cable diameter: 18 mm, IP 66, Colour: Black

Artikelnummer	Artikelbezeichnung	GTIN (EAN)	VPE
<u>28538.4</u>	KDS-DEG 17-18 BK	4044211215316	10 ST



Seal, Mounting type: Plug in, Length x width: 42.8 mm, Max. cable diameter: 24 mm, IP 66, Colour: Black

Artikelnummer	Artikelbezeichnung	GTIN (EAN)	VPE
<u>28544.4</u>	KDS-DEG 23-24 BK	4044211215439	10 ST



Seal, Mounting type: Plug in, Length x width: 42.8 mm, Max. cable diameter: 20 mm, IP 66, Colour: Grey

Artikelnummer	Artikelbezeichnung	GTIN (EAN)	VPE
<u>28581.6</u>	KDS-DEG 19-20 GR	4044211215347	10 ST



Seal, Mounting type: Plug in, Length x width: 42.8 mm, Max. cable diameter: 21 mm, IP 66, Colour: Grey

Artikelnummer	Artikelbezeichnung	GTIN (EAN)	VPE
<u>28582.6</u>	KDS-DEG 20-21 GR	4044211215361	10 ST



Seal, Mounting type: Plug in, Length x width: 42.8 mm, Max. cable diameter: 22 mm, IP 66, Colour: Grey

Artikelnummer	Artikelbezeichnung	GTIN (EAN)	VPE
<u>28583.6</u>	KDS-DEG 21-22 GR	4044211215385	10 ST



Seal, Mounting type: Plug in, Length x width: 42.8 mm, Max. cable diameter: 23 mm, IP 66, Colour: Grey

Artikelnummer	Artikelbezeichnung	GTIN (EAN)	VPE
<u>28584.6</u>	KDS-DEG 22-23 GR	4044211215408	10 ST

##INVERSE##CONTA-CABLE



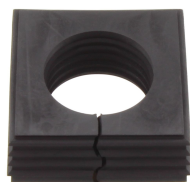
Seal, Mounting type: Plug in, Length x width: 42.8 mm, Max. cable diameter: 25 mm, IP 66, Colour: Black

Artikelnummer	Artikelbezeichnung	GTIN (EAN)	VPE
<u>28545.4</u>	KDS-DEG 24-25 BK	4044211215453	10 ST



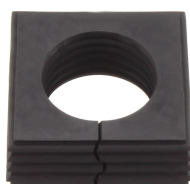
Seal, Mounting type: Plug in, Length x width: 42.8 mm, Max. cable diameter: 26 mm, IP 66, Colour: Black

Artikelnummer	Artikelbezeichnung	GTIN (EAN)	VPE
<u>28546.4</u>	KDS-DEG 25-26 BK	4044211215460	10 ST



Seal, Mounting type: Plug in, Length x width: 42.8 mm, Max. cable diameter: 27 mm, IP 66, Colour: Black

Artikelnummer	Artikelbezeichnung	GTIN (EAN)	VPE
<u>28547.4</u>	KDS-DEG 26-27 BK	4044211215491	10 ST



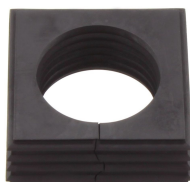
Seal, Mounting type: Plug in, Length x width: 42.8 mm, Max. cable diameter: 28 mm, IP 66, Colour: Black

Artikelnummer	Artikelbezeichnung	GTIN (EAN)	VPE
<u>28548.4</u>	KDS-DEG 27-28 BK	4044211215514	10 ST



Seal, Mounting type: Plug in, Length x width: 42.8 mm, Max. cable diameter: 29 mm, IP 66, Colour: Black

Artikelnummer	Artikelbezeichnung	GTIN (EAN)	VPE
<u>28549.4</u>	KDS-DEG 28-29 BK	4044211215538	10 ST



Seal, Mounting type: Plug in, Length x width: 42.8 mm, Max. cable diameter: 30 mm, IP 66, Colour: Black

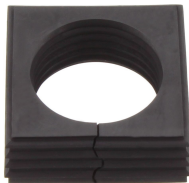
Artikelnummer	Artikelbezeichnung	GTIN (EAN)	VPE
<u>28550.4</u>	KDS-DEG 29-30 BK	4044211215552	10 ST



Seal, Mounting type: Plug in, Length x width: 42.8 mm, Max. cable diameter: 31 mm, IP 66, Colour: Black

Artikelnummer	Artikelbezeichnung	GTIN (EAN)	VPE
<u>28551.4</u>	KDS-DEG 30-31 BK	4044211215576	10 ST

##INVERSE##CONTA-CABLE



Seal, Mounting type: Plug in, Length x width: 42.8 mm, Max. cable diameter: 32 mm, IP 66, Colour: Black

Artikelnummer	Artikelbezeichnung	GTIN (EAN)	VPE
<u>28552.4</u>	KDS-DEG 31-32 BK	4044211215590	10 ST



Seal, Mounting type: Plug in, Length x width: 42.8 mm, Max. cable diameter: 18 mm, IP 66, Colour: Grey

Artikelnummer	Artikelbezeichnung	GTIN (EAN)	VPE
<u>28579.6</u>	KDS-DEG 17-18 GR	4044211215309	10 ST



Seal, Mounting type: Plug in, Length x width: 42.8 mm, Max. cable diameter: 19 mm, IP 66, Colour: Grey

Artikelnummer	Artikelbezeichnung	GTIN (EAN)	VPE
<u>28580.6</u>	KDS-DEG 18-19 GR	4044211215323	10 ST



Seal dummy, Mounting type: Plug in, Length x width: 42.8 mm, IP 66, Colour: Grey

Artikelnummer	Artikelbezeichnung	GTIN (EAN)	VPE
<u>28575.6</u>	KDS-DEG/B GR	4044211215248	10 ST



Seal, Mounting type: Plug in, Length x width: 42.8 mm, Max. cable diameter: 15 mm, IP 66, Colour: Grey

Artikelnummer	Artikelbezeichnung	GTIN (EAN)	VPE
<u>28576.6</u>	KDS-DEG 14-15 GR	4044211209971	10 ST



Seal, Mounting type: Plug in, Length x width: 42.8 mm, Max. cable diameter: 16 mm, IP 66, Colour: Grey

Artikelnummer	Artikelbezeichnung	GTIN (EAN)	VPE
<u>28577.6</u>	KDS-DEG 15-16 GR	4044211215262	10 ST



Seal, Mounting type: Plug in, Length x width: 42.8 mm, Max. cable diameter: 17 mm, IP 66, Colour: Grey

Artikelnummer	Artikelbezeichnung	GTIN (EAN)	VPE
<u>28578.6</u>	KDS-DEG 16-17 GR	4044211215286	10 ST

##INVERSE##CONTA-CABLE



Seal, Mounting type: Plug in, Length x width: 42.8 mm, Max. cable diameter: 32 mm, IP 66, Colour: Grey

Artikelnummer	Artikelbezeichnung	GTIN (EAN)	VPE
<u>28593.6</u>	KDS-DEG 31-32 GR	4044211215583	10 ST



Seal, Mounting type: Plug in, Length x width: 42.8 mm, Max. cable diameter: 33 mm, IP 66, Colour: Grey

Artikelnummer	Artikelbezeichnung	GTIN (EAN)	VPE
<u>28594.6</u>	KDS-DEG 32-33 GR	4044211215606	10 ST



Seal, Mounting type: Plug in, Length x width: 42.8 mm, Max. cable diameter: 23 mm, IP 66, Colour: Black

Artikelnummer	Artikelbezeichnung	GTIN (EAN)	VPE
<u>28543.4</u>	KDS-DEG 22-23 BK	4044211215415	10 ST



Seal, Mounting type: Plug in, Length x width: 42.8 mm, Max. cable diameter: 24 mm, IP 66, Colour: Black

Artikelnummer	Artikelbezeichnung	GTIN (EAN)	VPE
<u>28554.4</u>	KDS-DEG/K 7-24 BK	4044211216108	10 ST



Seal, Mounting type: Plug in, Length x width: 42.8 mm, Max. cable diameter: 24 mm, IP 66, Colour: Grey

Artikelnummer	Artikelbezeichnung	GTIN (EAN)	VPE
<u>28585.6</u>	KDS-DEG 23-24 GR	4044211215422	10 ST



Seal, Mounting type: Plug in, Length x width: 42.8 mm, Max. cable diameter: 25 mm, IP 66, Colour: Grey

Artikelnummer	Artikelbezeichnung	GTIN (EAN)	VPE
<u>28586.6</u>	KDS-DEG 24-25 GR	4044211215446	10 ST



Seal, Mounting type: Plug in, Length x width: 42.8 mm, Max. cable diameter: 26 mm, IP 66, Colour: Grey

Artikelnummer	Artikelbezeichnung	GTIN (EAN)	VPE
<u>28587.6</u>	KDS-DEG 25-26 GR	4044211215477	10 ST

##INVERSE##CONTA-CABLE



Seal, Mounting type: Plug in, Length x width: 42.8 mm, Max. cable diameter: 27 mm, IP 66, Colour: Grey

Artikelnummer	Artikelbezeichnung	GTIN (EAN)	VPE
<u>28588.6</u>	KDS-DEG 26-27 GR	4044211215484	10 ST



Seal, Mounting type: Plug in, Length x width: 42.8 mm, Max. cable diameter: 28 mm, IP 66, Colour: Grey

Artikelnummer	Artikelbezeichnung	GTIN (EAN)	VPE
<u>28589.6</u>	KDS-DEG 27-28 GR	4044211215507	10 ST



Seal, Mounting type: Plug in, Length x width: 42.8 mm, Max. cable diameter: 29 mm, IP 66, Colour: Grey

Artikelnummer	Artikelbezeichnung	GTIN (EAN)	VPE
<u>28590.6</u>	KDS-DEG 28-29 GR	4044211215521	10 ST



Seal, Mounting type: Plug in, Length x width: 42.8 mm, Max. cable diameter: 30 mm, IP 66, Colour: Grey

Artikelnummer	Artikelbezeichnung	GTIN (EAN)	VPE
<u>28591.6</u>	KDS-DEG 29-30 GR	4044211215545	10 ST



Seal, Mounting type: Plug in, Length x width: 42.8 mm, Max. cable diameter: 31 mm, IP 66, Colour: Grey

Artikelnummer	Artikelbezeichnung	GTIN (EAN)	VPE
<u>28592.6</u>	KDS-DEG 30-31 GR	4044211215569	10 ST



Seal, Mounting type: Plug in, Length x width: 42.8 mm, Max. cable diameter: 19 mm, IP 66, Colour: Black

Artikelnummer	Artikelbezeichnung	GTIN (EAN)	VPE
<u>28539.4</u>	KDS-DEG 18-19 BK	4044211215330	10 ST



Seal, Mounting type: Plug in, Length x width: 42.8 mm, Max. cable diameter: 21 mm, IP 66, Colour: Black

Artikelnummer	Artikelbezeichnung	GTIN (EAN)	VPE
<u>28541.4</u>	KDS-DEG 20-21 BK	4044211215378	10 ST

##INVERSE##CONTA-CABLE



Seal, Mounting type: Plug in, Length x width: 42.8 mm, Max. cable diameter: 22 mm, IP 66, Colour: Black

Artikelnummer	Artikelbezeichnung	GTIN (EAN)	VPE
<u>28542.4</u>	KDS-DEG 21-22 BK	4044211215392	10 ST



Seal, Mounting type: Plug in, Length x width: 20.3 mm, Max. cable diameter: 7 mm, IP 66, Colour: Grey

Artikelnummer	Artikelbezeichnung	GTIN (EAN)	VPE
<u>28567.6</u>	KDS-DE 6-7 GR	4044211211059	10 ST



Seal, Mounting type: Plug in, Length x width: 20.3 mm, Max. cable diameter: 8 mm, IP 66, Colour: Grey

Artikelnummer	Artikelbezeichnung	GTIN (EAN)	VPE
<u>28568.6</u>	KDS-DE 7-8 GR	4044211211066	10 ST



Seal, Mounting type: Plug in, Length x width: 20.3 mm, Max. cable diameter: 9 mm, IP 66, Colour: Grey

Artikelnummer	Artikelbezeichnung	GTIN (EAN)	VPE
<u>28569.6</u>	KDS-DE 8-9 GR	4044211211073	10 ST



Seal, Mounting type: Plug in, Length x width: 20.3 mm, Max. cable diameter: 10 mm, IP 66, Colour: Grey

Artikelnummer	Artikelbezeichnung	GTIN (EAN)	VPE
<u>28570.6</u>	KDS-DE 9-10 GR	4044211211080	10 ST



Seal, Mounting type: Plug in, Length x width: 20.3 mm, Max. cable diameter: 11 mm, IP 66, Colour: Grey

Artikelnummer	Artikelbezeichnung	GTIN (EAN)	VPE
<u>28571.6</u>	KDS-DE 10-11 GR	4044211211097	10 ST



Seal, Mounting type: Plug in, Length x width: 20.3 mm, Max. cable diameter: 12 mm, IP 66, Colour: Grey

Artikelnummer	Artikelbezeichnung	GTIN (EAN)	VPE
<u>28572.6</u>	KDS-DE 11-12 GR	4044211211103	10 ST

28506.4 KDS-SR 1-4 BK

##INVERSE##CONTA-CABLE



Seal, Mounting type: Plug in, Length x width: 20.3 mm, Max. cable diameter: 13 mm, IP 66, Colour: Grey

Artikelnummer	Artikelbezeichnung	GTIN (EAN)	VPE
<u>28573.6</u>	KDS-DE 12-13 GR	4044211215224	10 ST



Seal, Mounting type: Plug in, Length x width: 20.3 mm, Max. cable diameter: 3 mm, IP 66, Colour: Grey

Artikelnummer	Artikelbezeichnung	GTIN (EAN)	VPE
<u>28563.6</u>	KDS-DE 2-3 GR	4044211211011	10 ST



Seal, Mounting type: Plug in, Length x width: 20.3 mm, Max. cable diameter: 4 mm, IP 66, Colour: Grey

Artikelnummer	Artikelbezeichnung	GTIN (EAN)	VPE
<u>28564.6</u>	KDS-DE 3-4 GR	4044211211028	10 ST



Seal, Mounting type: Plug in, Length x width: 20.3 mm, Max. cable diameter: 5 mm, IP 66, Colour: Grey

Artikelnummer	Artikelbezeichnung	GTIN (EAN)	VPE
<u>28565.6</u>	KDS-DE 4-5 GR	4044211211035	10 ST



Seal, Mounting type: Plug in, Length x width: 20.3 mm, Max. cable diameter: 6 mm, IP 66, Colour: Grey

Artikelnummer	Artikelbezeichnung	GTIN (EAN)	VPE
<u>28566.6</u>	KDS-DE 5-6 GR	4044211211042	10 ST



Seal, Mounting type: Plug in, Length x width: 20.3 mm, Max. cable diameter: 14 mm, IP 66, Colour: Grey

Artikelnummer	Artikelbezeichnung	GTIN (EAN)	VPE
<u>28574.6</u>	KDS-DE 13-14 GR	4044211215231	10 ST



Seal, Mounting type: Plug in, Length x width: 20.3 mm, Max. cable diameter: 5 mm, IP 66, Colour: Grey

Artikelnummer	Artikelbezeichnung	GTIN (EAN)	VPE
<u>28595.6</u>	KDS-DE 2X4-5 GR	4044211215682	10 ST

##INVERSE##CONTA-CABLE



Seal, Mounting type: Plug in, Length x width: 20.3 mm, Max. cable diameter: 6 mm, IP 66, Colour: Grey

Artikelnummer	Artikelbezeichnung	GTIN (EAN)	VPE
<u>28596.6</u>	KDS-DE 2X5-6 GR	4044211215699	10 ST



Seal, Mounting type: Plug in, Length x width: 20.3 mm, Max. cable diameter: 3 mm, IP 66, Colour: Grey

Artikelnummer	Artikelbezeichnung	GTIN (EAN)	VPE
<u>28597.6</u>	KDS-DE 4X2-3 GR	4044211215705	10 ST



Seal, Mounting type: Plug in, Length x width: 20.3 mm, Max. cable diameter: 4 mm, IP 66, Colour: Grey

Artikelnummer	Artikelbezeichnung	GTIN (EAN)	VPE
<u>28598.6</u>	KDS-DE 4X3-4 GR	4044211215712	10 ST



Seal, Mounting type: Plug in, Length x width: 20.3 mm, IP 66, Colour: Grey

Artikelnummer	Artikelbezeichnung	GTIN (EAN)	VPE
<u>28599.6</u>	KDS-DE/1XASI GR	4044211215729	10 ST



Seal, Mounting type: Plug in, Length x width: 20.3 mm, IP 66, Colour: Black

Artikelnummer	Artikelbezeichnung	GTIN (EAN)	VPE
<u>28560.4</u>	KDS-DE/2XASI BK	4044211215675	10 ST



Seal dummy, Mounting type: Plug in, Length x width: 20.3 mm, IP 66, Colour: Grey

Artikelnummer	Artikelbezeichnung	GTIN (EAN)	VPE
<u>28561.6</u>	KDS-DE/B GR	4044211211004	10 ST



Seal, Mounting type: Plug in, Length x width: 20.3 mm, Max. cable diameter: 2 mm, IP 66, Colour: Grey

Artikelnummer	Artikelbezeichnung	GTIN (EAN)	VPE
<u>28562.6</u>	KDS-DE 1,5-2 GR	4044211209988	10 ST

##INVERSE##CONTA-CABLE



Seal, Mounting type: Plug in, Length x width: 20.3 mm, Max. cable diameter: 6.5 mm, IP 66, Colour: Black

Artikelnummer	Artikelbezeichnung	GTIN (EAN)	VPE
<u>28682.4</u>	KDS-DE 2X6,5 BK	4044211219536	10 ST



Seal, Mounting type: Plug in, Length x width: 20.3 mm, Max. cable diameter: 6.5 mm, IP 66, Colour: Black

Artikelnummer	Artikelbezeichnung	GTIN (EAN)	VPE
<u>28687.4</u>	KDS-DE 3X5-6 BK	4044211220501	10 ST



Seal, Mounting type: Plug in, Length x width: 20.3 mm, Max. cable diameter: 2 mm, IP 66, Colour: Grey

Artikelnummer	Artikelbezeichnung	GTIN (EAN)	VPE
<u>28696.6</u>	KDS-DE 2 GR	4044211220884	10 ST



Seal, Mounting type: Plug in, Length x width: 20.3 mm, Max. cable diameter: 3 mm, IP 66, Colour: Black

Artikelnummer	Artikelbezeichnung	GTIN (EAN)	VPE
<u>28697.4</u>	KDS-DE 3 BK	4044211220891	10 ST



Seal, Mounting type: Plug in, Length x width: 20.3 mm, Max. cable diameter: 3 mm, IP 66, Colour: Grey

Artikelnummer	Artikelbezeichnung	GTIN (EAN)	VPE
<u>28698.6</u>	KDS-DE 3 GR	4044211220907	10 ST



Seal, Mounting type: Plug in, Length x width: 20.3 mm, IP 66, Colour: Grey

Artikelnummer	Artikelbezeichnung	GTIN (EAN)	VPE
<u>28600.6</u>	KDS-DE/2XASI GR	4044211215736	10 ST



Seal, Mounting type: Plug in, Length x width: 20.3 mm, Max. cable diameter: 4.5 mm, IP 66, Colour: Grey

Artikelnummer	Artikelbezeichnung	GTIN (EAN)	VPE
<u>28606.6</u>	KDS-DE 4X4,5 GR	4044211216252	10 ST

##INVERSE##CONTA-CABLE



Seal, Mounting type: Plug in, Length x width: 20.3 mm, Max. cable diameter: 6.5 mm, IP 66, Colour: Grey

Artikelnummer	Artikelbezeichnung	GTIN (EAN)	VPE
<u>28607.6</u>	KDS-DE 2X6,5 GR	4044211216238	10 ST



Seal, Mounting type: Plug in, Length x width: 20.3 mm, Max. cable diameter: 15 mm, IP 66, Colour: Black

Artikelnummer	Artikelbezeichnung	GTIN (EAN)	VPE
<u>28608.4</u>	KDS-DE 14-15 BK	4044211219314	10 ST



Seal, Mounting type: Plug in, Length x width: 20.3 mm, Max. cable diameter: 15 mm, IP 66, Colour: Grey

Artikelnummer	Artikelbezeichnung	GTIN (EAN)	VPE
<u>28609.6</u>	KDS-DE 14-15 GR	4044211219307	10 ST



Seal, Mounting type: Plug in, Length x width: 20.3 mm, Max. cable diameter: 16 mm, IP 66, Colour: Black

Artikelnummer	Artikelbezeichnung	GTIN (EAN)	VPE
<u>28670.4</u>	KDS-DE 15-16 BK	4044211219321	10 ST



Seal, Mounting type: Plug in, Length x width: 20.3 mm, Max. cable diameter: 17 mm, IP 66, Colour: Grey

Artikelnummer	Artikelbezeichnung	GTIN (EAN)	VPE
<u>28671.6</u>	KDS-DE 15-16 GR	4044211219338	10 ST



Seal, Mounting type: Plug in, Length x width: 20.3 mm, Max. cable diameter: 5 mm, IP 66, Colour: Black

Artikelnummer	Artikelbezeichnung	GTIN (EAN)	VPE
<u>28672.4</u>	KDS-DE 4X5 BK	4044211219345	10 ST



Seal, Mounting type: Plug in, Length x width: 20.3 mm, Max. cable diameter: 5 mm, IP 66, Colour: Grey

Artikelnummer	Artikelbezeichnung	GTIN (EAN)	VPE
<u>28673.6</u>	KDS-DE 4X5 GR	4044211219352	10 ST

##INVERSE##CONTA-CABLE



Seal, Mounting type: Plug in, Length x width: 20.3 mm, Max. cable diameter: 4.5 mm, IP 66, Colour: Black

Artikelnummer	Artikelbezeichnung	GTIN (EAN)	VPE
<u>28681.4</u>	KDS-DE 4X4,5 BK	4044211219543	10 ST



Seal, Mounting type: Plug in, Length x width: 20.3 mm, Max. cable diameter: 11 mm, IP 66, Colour: Black

Artikelnummer	Artikelbezeichnung	GTIN (EAN)	VPE
<u>28530.4</u>	KDS-DE 10-11 BK	4044211210960	10 ST



Seal, Mounting type: Plug in, Length x width: 20.3 mm, Max. cable diameter: 12 mm, IP 66, Colour: Black

Artikelnummer	Artikelbezeichnung	GTIN (EAN)	VPE
<u>28531.4</u>	KDS-DE 11-12 BK	4044211210977	10 ST



Seal, Mounting type: Plug in, Length x width: 20.3 mm, Max. cable diameter: 13 mm, IP 66, Colour: Black

Artikelnummer	Artikelbezeichnung	GTIN (EAN)	VPE
<u>28532.4</u>	KDS-DE 12-13 BK	4044211210984	10 ST



Seal, Mounting type: Plug in, Length x width: 20.3 mm, Max. cable diameter: 14 mm, IP 66, Colour: Black

Artikelnummer	Artikelbezeichnung	GTIN (EAN)	VPE
<u>28533.4</u>	KDS-DE 13-14 BK	4044211210991	10 ST



Seal, Mounting type: Plug in, Length x width: 20.3 mm, Max. cable diameter: 11 mm, IP 66, Colour: Black

Artikelnummer	Artikelbezeichnung	GTIN (EAN)	VPE
<u>28553.4</u>	KDS-DE/K 2-11 BK	4044211216092	10 ST



Seal, Mounting type: Plug in, Length x width: 20.3 mm, Max. cable diameter: 5 mm, IP 66, Colour: Black

Artikelnummer	Artikelbezeichnung	GTIN (EAN)	VPE
<u>28555.4</u>	KDS-DE 2X4-5 BK	4044211215620	10 ST

28506.4 KDS-SR 1-4 BK

##INVERSE##CONTA-CABLE



Seal, Mounting type: Plug in, Length x width: 20.3 mm, Max. cable diameter: 6 mm, IP 66, Colour: Black

Artikelnummer	Artikelbezeichnung	GTIN (EAN)	VPE
<u>28556.4</u>	KDS-DE 2X5-6 BK	4044211215637	10 ST



Seal, Mounting type: Plug in, Length x width: 20.3 mm, Max. cable diameter: 3 mm, IP 66, Colour: Black

Artikelnummer	Artikelbezeichnung	GTIN (EAN)	VPE
<u>28557.4</u>	KDS-DE 4X2-3 BK	4044211215644	10 ST



Seal, Mounting type: Plug in, Length x width: 20.3 mm, Max. cable diameter: 4 mm, IP 66, Colour: Black

Artikelnummer	Artikelbezeichnung	GTIN (EAN)	VPE
<u>28558.4</u>	KDS-DE 4X3-4 BK	4044211215651	10 ST



Seal, Mounting type: Plug in, Length x width: 20.3 mm, IP 66, Colour: Black

Artikelnummer	Artikelbezeichnung	GTIN (EAN)	VPE
<u>28559.4</u>	KDS-DE/1XASI BK	4044211215668	10 ST



Seal dummy, Mounting type: Plug in, Length x width: 20.3 mm, IP 66, Colour: Black

Artikelnummer	Artikelbezeichnung	GTIN (EAN)	VPE
<u>28520.4</u>	KDS-DE/B BK	4044211210878	10 ST



Seal, Mounting type: Plug in, Length x width: 20.3 mm, Max. cable diameter: 2 mm, IP 66, Colour: Black

Artikelnummer	Artikelbezeichnung	GTIN (EAN)	VPE
<u>28521.4</u>	KDS-DE 1,5-2 BK	4044211210007	10 ST



Seal, Mounting type: Plug in, Length x width: 20.3 mm, Max. cable diameter: 3 mm, IP 66, Colour: Black

Artikelnummer	Artikelbezeichnung	GTIN (EAN)	VPE
<u>28522.4</u>	KDS-DE 2-3 BK	4044211210885	10 ST

##INVERSE##CONTA-CABLE



Seal, Mounting type: Plug in, Length x width: 20.3 mm, Max. cable diameter: 4 mm, IP 66, Colour: Black

Artikelnummer	Artikelbezeichnung	GTIN (EAN)	VPE
<u>28523.4</u>	KDS-DE 3-4 BK	4044211210892	10 ST



Seal, Mounting type: Plug in, Length x width: 20.3 mm, Max. cable diameter: 5 mm, IP 66, Colour: Black

Artikelnummer	Artikelbezeichnung	GTIN (EAN)	VPE
<u>28524.4</u>	KDS-DE 4-5 BK	4044211210908	10 ST



Seal, Mounting type: Plug in, Length x width: 20.3 mm, Max. cable diameter: 6 mm, IP 66, Colour: Black

Artikelnummer	Artikelbezeichnung	GTIN (EAN)	VPE
<u>28525.4</u>	KDS-DE 5-6 BK	4044211210915	10 ST



Seal, Mounting type: Plug in, Length x width: 20.3 mm, Max. cable diameter: 7 mm, IP 66, Colour: Black

Artikelnummer	Artikelbezeichnung	GTIN (EAN)	VPE
<u>28526.4</u>	KDS-DE 6-7 BK	4044211210922	10 ST



Seal, Mounting type: Plug in, Length x width: 20.3 mm, Max. cable diameter: 8 mm, IP 66, Colour: Black

Artikelnummer	Artikelbezeichnung	GTIN (EAN)	VPE
<u>28527.4</u>	KDS-DE 7-8 BK	4044211210939	10 ST



Seal, Mounting type: Plug in, Length x width: 20.3 mm, Max. cable diameter: 9 mm, IP 66, Colour: Black

Artikelnummer	Artikelbezeichnung	GTIN (EAN)	VPE
<u>28528.4</u>	KDS-DE 8-9 BK	4044211210946	10 ST



Seal, Mounting type: Plug in, Length x width: 20.3 mm, Max. cable diameter: 10 mm, IP 66, Colour: Black

Artikelnummer	Artikelbezeichnung	GTIN (EAN)	VPE
<u>28529.4</u>	KDS-DE 9-10 BK	4044211210953	10 ST

##INVERSE##CONTA-CABLE



Seal, Mounting type: Plug in, Length x width: 20.3 mm, Max. cable diameter: 6 mm, IP 66, Colour: Grey

Artikelnummer	Artikelbezeichnung	GTIN (EAN)	VPE
<u>28688.6</u>	KDS-DE 3X5-6 GR	4044211220518	10 ST



Seal, Mounting type: Plug in, Length x width: 20.3 mm, Max. cable diameter: 7 mm, IP 66, Colour: Black

Artikelnummer	Artikelbezeichnung	GTIN (EAN)	VPE
<u>28689.4</u>	KDS-DE 2X7 BK	4044211220815	10 ST



Seal, Mounting type: Plug in, Length x width: 20.3 mm, Max. cable diameter: 7 mm, IP 66, Colour: Grey

Artikelnummer	Artikelbezeichnung	GTIN (EAN)	VPE
<u>28690.6</u>	KDS-DE 2X7 GR	4044211220822	10 ST



Seal, Mounting type: Plug in, Length x width: 20.3 mm, Max. cable diameter: 8 mm, IP 66, Colour: Black

Artikelnummer	Artikelbezeichnung	GTIN (EAN)	VPE
<u>28691.4</u>	KDS-DE 2X8 BK	4044211220839	10 ST



Seal, Mounting type: Plug in, Length x width: 20.3 mm, Max. cable diameter: 8 mm, IP 66, Colour: Grey

Artikelnummer	Artikelbezeichnung	GTIN (EAN)	VPE
<u>28692.6</u>	KDS-DE 2X8 GR	4044211220846	10 ST



Seal, Mounting type: Plug in, Length x width: 20.3 mm, Max. cable diameter: 1.5 mm, IP 66, Colour: Black

Artikelnummer	Artikelbezeichnung	GTIN (EAN)	VPE
<u>28693.4</u>	KDS-DE 1,5 BK	4044211220853	10 ST



Seal, Mounting type: Plug in, Length x width: 20.3 mm, Max. cable diameter: 1.5 mm, IP 66, Colour: Grey

Artikelnummer	Artikelbezeichnung	GTIN (EAN)	VPE
<u>28694.6</u>	KDS-DE 1,5 GR	4044211220860	10 ST

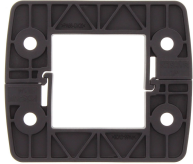
28506.4 KDS-SR 1-4 BK

##INVERSE##CONTA-CABLE



Seal, Mounting type: Plug in, Length x width: 20.3 mm, Max. cable diameter: 2 mm, IP 66, Colour: Black

Artikelnummer	Artikelbezeichnung	GTIN (EAN)	VPE
<u>28695.4</u>	KDS-DE 2 BK	4044211220877	10 ST



Inner locking frame, Length: 80 mm, Height: 11.5 mm, Colour: Black

Artikelnummer	Artikelbezeichnung	GTIN (EAN)	VPE
<u>28507.4</u>	KDS-IVR 1-4 BK	4044211210830	10 ST



Cable entry, Inlay, Mounting type: Plug in, IP 66, Colour: Black

Artikelnummer	Artikelbezeichnung	GTIN (EAN)	VPE
<u>28518.4</u>	KDS-Inlay 4 BK	4044211210861	5 ST

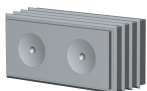
EMC brackets



Shield-connection rail enabling mounting of shield connection clips directly on cable entry system KDS, Mounting type: Screw, Length: 35,3 mm, Width: 68 mm, Height: 16 mm, Profile: 10x3 mm

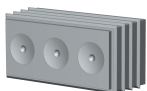
Artikelnummer	Artikelbezeichnung	GTIN (EAN)	VPE
<u>28623.0</u>	KDS-EMV-SAB 1-4	4044211219628	1 ST

DES seals



Seal, Mounting type: Plug in, Length 42.7 mm, Width: 20.3 mm, IP54, Colour: Grey

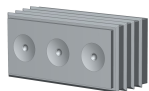
Artikelnummer	Artikelbezeichnung	GTIN (EAN)	VPE
<u>28800.6</u>	KDS-DES 2X10,5 GR	4044211227616	5 ST



Seal, Mounting type: Plug in, Length 42.7 mm, Width: 20.3 mm, IP54, Colour: Grey

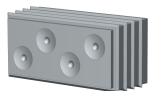
Artikelnummer	Artikelbezeichnung	GTIN (EAN)	VPE
<u>28801.6</u>	KDS-DES 3X9,5 GR	4044211227623	5 ST

DES seals



Seal, Mounting type: Plug in, Length 42.7 mm, Width: 20.3 mm, IP54, Colour: Grey

Artikelnummer	Artikelbezeichnung	GTIN (EAN)	VPE
<u>28802.6</u>	KDS-DES 3X8,5 GR	4044211227630	5 ST



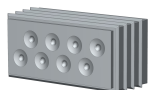
Seal, Mounting type: Plug in, Length 42.7 mm, Width: 20.3 mm, IP54, Colour: Grey

Artikelnummer	Artikelbezeichnung	GTIN (EAN)	VPE
<u>28803.6</u>	KDS-DES 4X7,5 GR	4044211233815	5 ST



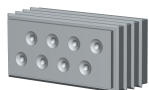
Seal, Mounting type: Plug in, Length 42.7 mm, Width: 20.3 mm, IP54, Colour: Grey

Artikelnummer	Artikelbezeichnung	GTIN (EAN)	VPE
<u>28804.6</u>	KDS-DES 7X6,5 GR	4044211233839	5 ST



Seal, Mounting type: Plug in, Length 42.7 mm, Width: 20.3 mm, IP54, Colour: Grey

Artikelnummer	Artikelbezeichnung	GTIN (EAN)	VPE
<u>28805.6</u>	KDS-DES 8X5,5 GR	4044211233822	5 ST



Seal, Mounting type: Plug in, Length 42.7 mm, Width: 20.3 mm, IP54, Colour: Grey

Artikelnummer	Artikelbezeichnung	GTIN (EAN)	VPE
<u>28806.6</u>	KDS-DES 8X4,5 GR	4044211233846	5 ST

Sheet-metal puncher



Sheet-metal puncher

Artikelnummer	Artikelbezeichnung	GTIN (EAN)	VPE
<u>28674.0</u>	BL KDS-SR 1-4	4044211217440	1 ST



Sheet metal punch for rectangular openings, Dimensions opening: 46 x 46 mm, Maximum wall thickness: 2.0 mm for stainless steel sheet, Material: steel

Artikelnummer	Artikelbezeichnung	GTIN (EAN)	VPE
<u>28683.0</u>	BL-VA KDS-SR 1-4	4044211218782	1 ST