



Tools for
Advancing
Innovation

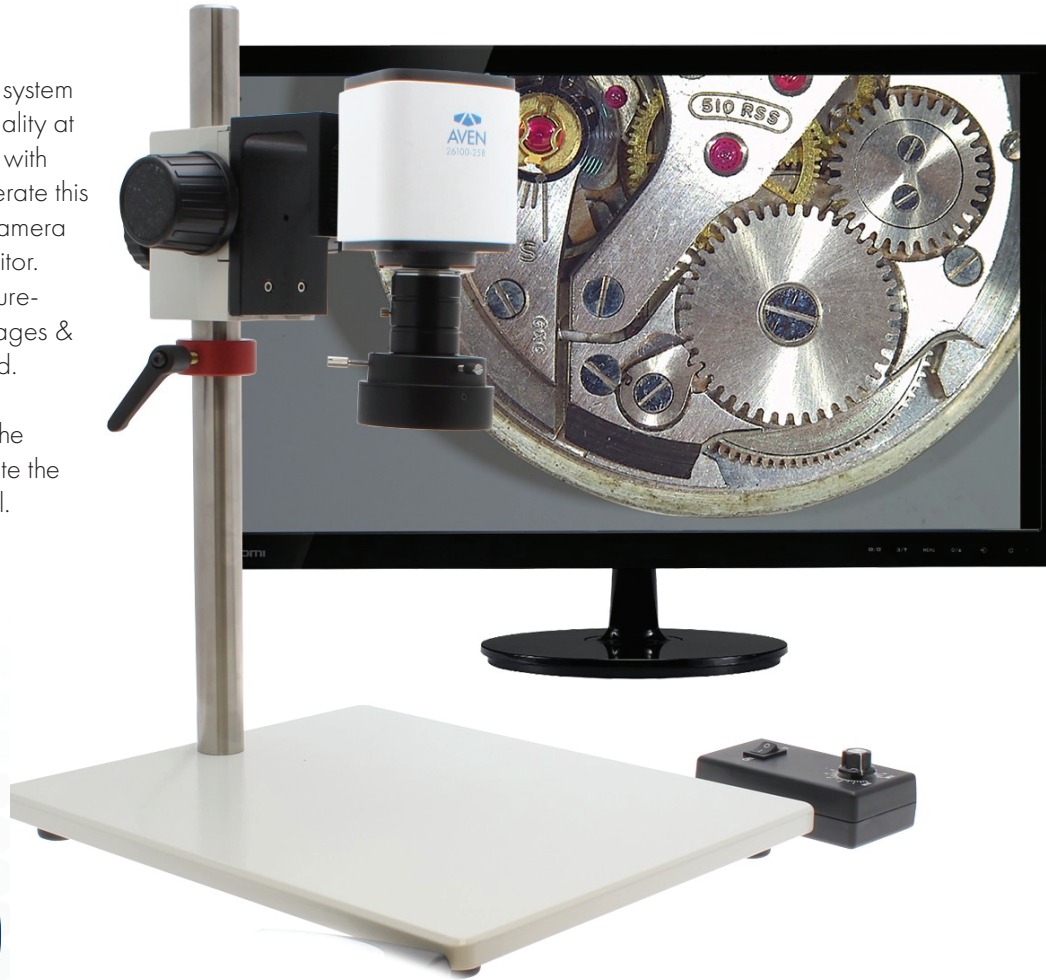
Mighty Cam Pro

Auto Focus HDMI/USB

On Post Standard Stand

High definition 1080P auto focus inspection system with a 22" monitor offering superb image quality at 60 frames per second. Working distance 6" with magnification range of 3x-43x. You can operate this system with or without a PC. Without a PC camera connects directly to the included HDMI monitor. View and record images and perform measurements using the included on screen tools. Images & videos can be saved to the included SD card. Connect the camera to a PC to utilize more advance features in the included software. The included LED ring light allows you to illuminate the object to get the sharpest and greatest detail.

Included Software Mosaic 2.1	HDMI, USB and SD Card Outputs Capture & Save Images Directly To SD Card	LED Ring Light Adjustable Illumination	3x-43x Magnification Auto Focus
--	--	---	------------------------------------



Features:

- 3x-43x Magnification
- Provides instant focus from any angle
- Sharp 1080p Full HD image
- Capture high resolution image/video files directly to the included SD card, with no need for an external recording device.
- USB Output connects Mighty Cam Pro to your PC
- Advanced software included
- Significantly reduces inspection time
- Includes controller for access to settings menu
- Alleviate the eye strain and neck fatigue associated with frequent microscope use

Mighty Cam Pro Camera On Post Standard Stand and LED Task Light	
Item Number	26700-108-PRO
Magnification	3x-43x
Resolution	2MP 1920x1080
Frame Rate	60 fps @HDMI, 30fps @USB2.0
Video Recording	30fps @SD Card, 30 fps @PC
Outputs	HDMI, USB2.0 and SD Card
PC Software	Mosaic 2.1
Package Contents	Mighty Cam Pro USB/HDMI AutoFocus, LED Ring Light, 22" HD Monitor, Standard Stand and N-Type Focus Mount



Tools for
Advancing
Innovation



Included
Software
Mosaic 2.1

HDMI, USB
and SD Card
Outputs
Capture & Save
Images Directly
To SD Card

Auto
Focus
Full HD
1080p

60fps
HDMI
30fps
SD Card, PC
and USB

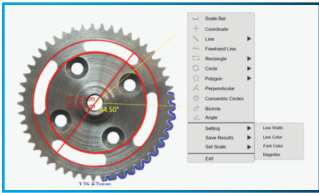
Mighty Cam Pro

Auto Focus HDMI/USB/SD

Aven's Mighty Cam Pro is an all-in-one inspection auto-focus camera. This camera offers both USB and HDMI outputs for inspection from an HD monitor or your PC via the included Mosaic software. This camera features integrated measurement capabilities for measuring without a PC. This camera also features a built-in SD card port for capturing instant high resolution images with no need for a PC.



Integrated Measurement System *No PC Required*



Built in on screen tools provide powerful measurement functions including freehand line, rectangle, polygon, circle, bicircle, angle, point-line distance and much more. Three different length units of millimeter, centimeter and micrometer are provided to meet various measurement requirements in different applications. Simple calibration tool is also included.

Mosaic Software Included

Compatible with Mosaic V2.1 Computational Imaging Software. Fast, efficient and worry-free is the core design concept of Mosaic V2.1 software. It adopts a new image "shooting-processing-measurement-reporting" function, modular design, and integrates various intelligent image processing algorithms. It is dedicated to providing users with more simple operation modes and improve work efficiency in all circumstances.

Real-Time Image Stitching

It can generate large-sized mosaic images in a few seconds while moving the stage, which is light, smooth and worry-free! Real-time depth-of-field fusion.

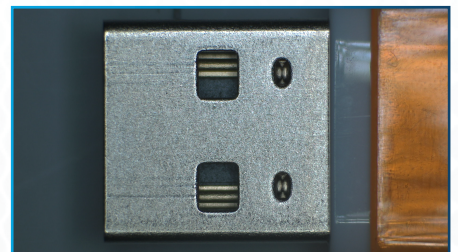
Perfect Color Reproduction

Aven's color processing is capable of a new level of precision, matches the monitor image to the eyepiece view, produces extremely-high color definition.

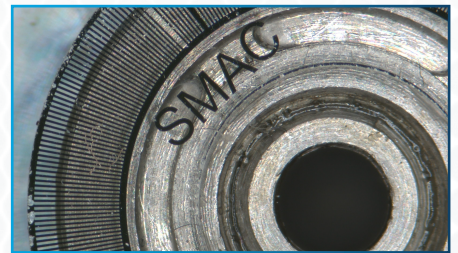
Macro Lens



Macro Lens



Micro Lens



Micro Lens

