

Fuse-disconnect terminal, Screw connection, Mounting type: Mounting rail TS 15/5.5, Rated cross-section: 4 mm², Width: 8 mm, Colour: Beige

Business data

| | |
|--|-----------------------------|
| Article number | 2467.2 |
| Article name | STK 1/15/LED(RD)/115V AC BG |
| GTIN (EAN) | 4044211052577 |
| Packaging unit | 100 |
| Quantity unit | PC |
| Weight per piece (not including packaging) | 12.8 g |
| Weight per piece (including packaging) | 14.18 g |
| Unit of weight | G |
| Customs number | 85369010 |
| Country of origin | DE |
| Product description | Fuse-disconnect terminal |

2467.2 STK 1/15/LED(RD)/115V AC BG

Technical data

Dimensions

| | |
|------------------|---------|
| Length | 57.5 mm |
| Width | 8 mm |
| Height TS 15/5.5 | 38.5 mm |

Ratings

| | |
|---|-------------------|
| Rated voltage (determined by the illuminated display and fuse being used) | 115 AC V |
| Rated current (as fuse-disconnect terminal) | 6,3 A |
| Rated cross-section | 4 mm ² |
| Overvoltage category | III |
| Contamination degree | 3 |

Connection data

| | |
|--|----------------------|
| Connection principle | Screw connection |
| Connection position | Lateral |
| Connections | 2 / extraction lever |
| Number of terminals per level | 2 |
| Number of levels | 1 |
| Wire cross-section single-core (rigid) / stranded, min. | 0.2 mm ² |
| Wire cross-section single core (rigid)/stranded, max. | 4 mm ² |
| Wire cross-section stranded, min. | 0.2 mm ² |
| Wire cross-section stranded, max. | 4 mm ² |
| Wire cross-section stranded with wire-end ferrules, min. | 0.2 mm ² |
| Wire cross-section stranded with wire-end ferrules, max. | 4 mm ² |
| Wire cross-section AWG, min. | 22 |
| Wire cross-section AWG, max. | 12 |
| Stripping length | 9 mm |
| Screw head | Slotted |
| Screw threading | M 3 |
| Tightening torque, min. | 0.5 Nm |
| Tightening torque, max. | 1 Nm |

Technical data

Further technical data

| | |
|--|------------------------|
| Insulation housing | Polyamide 6.6 |
| Flammability class UL 94 | V-2 |
| Working temperature, min. | -40 °C |
| Working temperature, max. | 105 °C |
| Mounting type | TS 15 |
| Fuse size | 5 x 20 / 5 x 25 mm |
| Gauge plug acc. to EN 60 947-1 | A4 |
| End plate required | ✓ |
| Voltage fuse | 250 V |
| Voltage illuminated display | 115 AC V |
| Cross-current via illuminated display | < 5 mA |
| Version of fuse holder | Swivelling |
| Type of display element (defect display) | LED |
| Version of fuse cartridge | G fuse 5 x 20 / 5 x 25 |
| Supply voltage (defect display), max. | 115 |
| Type of voltage (defect display) | AC |
| Colour of lamp | Red |

Print

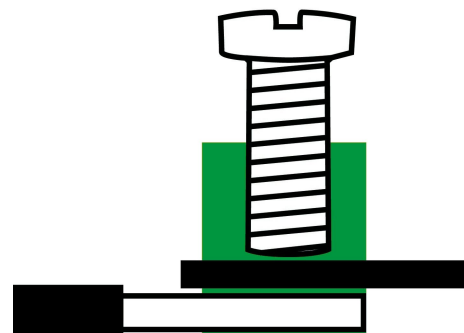
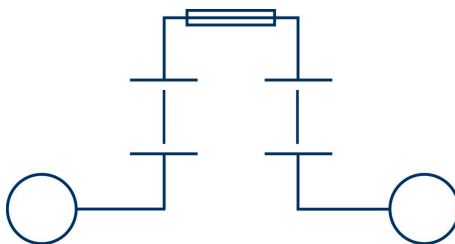
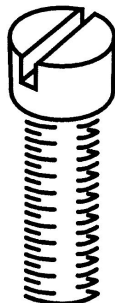
| | |
|--------|-------|
| Colour | Beige |
|--------|-------|

Environmental Product Compliance

| | |
|--------------------------------|-----|
| REACH Conform | Yes |
| REACH Candidate Substance Note | No |
| RoHS Conform | Yes |

Media

M3



Accessories

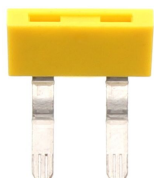
End plate



End plate, Width: 1.5 mm, Colour: Beige

| Article number | Article name | GTIN (EAN) | Packaging unit |
|----------------|--------------|---------------|----------------|
| <u>2046.2</u> | AP SI-1 BG | 4044211048518 | 50 |

Insulated external cross-connector



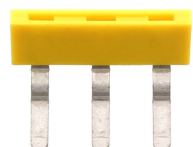
External insulated cross-connector, No. of poles: 2, Mounting type: Plug in, Width: 16.1 mm, Rated current: 27 A; Colour: Yellow

| Article number | Article name | GTIN (EAN) | Packaging unit |
|----------------|---------------|---------------|----------------|
| <u>2067.0</u> | AQI 2/8/11 YE | 4044211048730 | 50 ST |



External insulated cross-connector, No. of poles: 4, Mounting type: Plug in, Width: 32.3 mm, Rated current: 27 A; Colour: Yellow

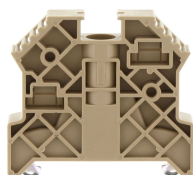
| Article number | Article name | GTIN (EAN) | Packaging unit |
|----------------|---------------|---------------|----------------|
| <u>2069.0</u> | AQI 4/8/11 YE | 4044211048754 | 50 ST |



External insulated cross-connector, No. of poles: 3, Mounting type: Plug in, Width: 24.2 mm, Rated current: 27 A; Colour: Yellow

| Article number | Article name | GTIN (EAN) | Packaging unit |
|----------------|---------------|---------------|----------------|
| <u>2068.0</u> | AQI 3/8/11 YE | 4044211048747 | 50 ST |

End stop



End stop, Mounting type: Mounting rail TS 35/7.5, Width: 9.5 mm, Colour: Beige

| Article number | Article name | GTIN (EAN) | Packaging unit |
|----------------|---------------|---------------|----------------|
| <u>2828.0</u> | ES 35/K/ST BG | 4044211055547 | 50 |

Data sheet

2467.2 STK 1/15/LED(RD)/115V AC BG

Solid link

Quick marking



Terminal marker / Pocket Maxicard, Length: 5 mm, Width: 8 mm, Colour: White

| Article number | Article name | GTIN (EAN) | Packaging unit |
|----------------|----------------|---------------|----------------|
| <u>9323.7</u> | PMC SB 8/40 WH | 4044211129231 | 400 ST |

Screwdriver

Connecting piece

Connecting sleeve, Colour: Orange



| Article number | Article name | GTIN (EAN) | Packaging unit |
|----------------|--------------|---------------|----------------|
| <u>2873.3</u> | VBS 2/10 OG | 4044211055981 | 20 ST |

Connecting sleeve, Colour: Orange



| Article number | Article name | GTIN (EAN) | Packaging unit |
|----------------|--------------|---------------|----------------|
| <u>2874.3</u> | VBS 3/10 OG | 4044211055998 | 20 ST |