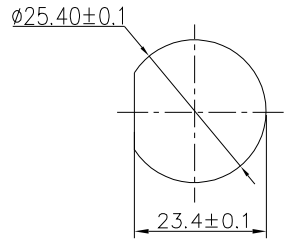
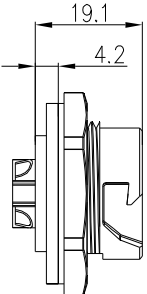


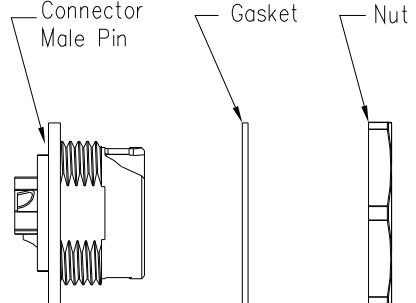
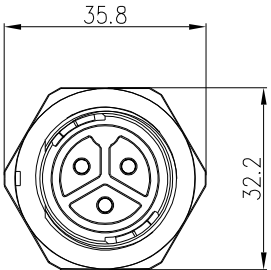
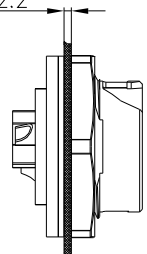
REV.	ECN NO.	DESCRIPTION	SIGN	DATE
C1	N/A	INITIAL DRAWING	Liu	2020/05/16



RECOMMENDED PANEL Cut-Out



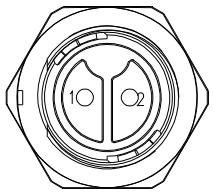
Panel T: Max 2.2



- Specification:
- 1.Operation Temperature: -45°C~105°C.
  - 2.Insulation Resistance: 100MΩ at DC500V.
  - 3.Contact Resistance: <10mΩ.
  - 4.Withstand Voltage: 2000V AC
  - 5.Operating Current: 20A
  - 6.Operating Voltage: AC 300V
  - 7.Waterproof Rate: IP67 (Mated)
  - 8.Housing: Nylon, Black
  - 9.Female Pin: Copper Alloy, Gold Plated
  - 10.Gasket: Silicon Gray
  - 11.Panel Nut: Nylon, Blue
  - 12.Torque Rate: 0.8~1.0N·m
  - 13.RoHS Compliant.
  - 14.Mating Cap P/N: 806-00058-00

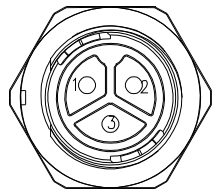
22XXX635-01

Pin Number



2 Pin

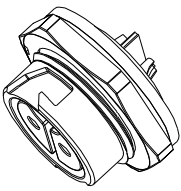
P/N: 24002635-01



3 Pin

P/N: 24003635-01

Pin Assignments Front View



**CHOGORI**

UNIT:mm		DESCRIPTION	Large Series Push Lock Female socket With Female Pin	PART NO	24XXX635-01	DRAWN BY	Liu	DATE	2020/05/16
TOLERANCE	.X ±0.25 .XX ±0.15 .XXX ±0.05 ANGLES ±1°	SCALE	1:1	SHEET	1 OF 1	CHECKED BY	Mo	DATE	2020/05/16
REV.	C1	SIZE	A4	* : Inspection Item		APPROVED BY	Adley	DATE	2020/05/16

THIS INFORMATION IS CONFIDENTIAL AND IS DISCLOSED TO YOU ON CONDITION THAT NO FURTHER DISCLOSURE IS MADE BY YOU TO OTHER THAN CHOGORI PERSONNEL WITHOUT AUTHORIZATION FROM CHOGORI CORP.