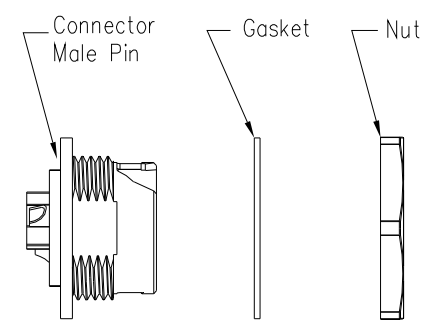
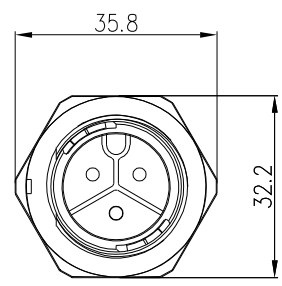
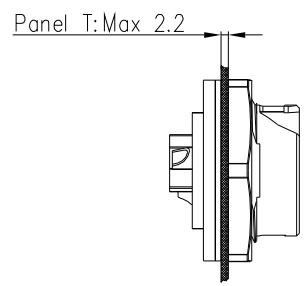
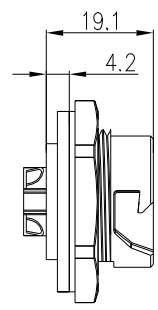
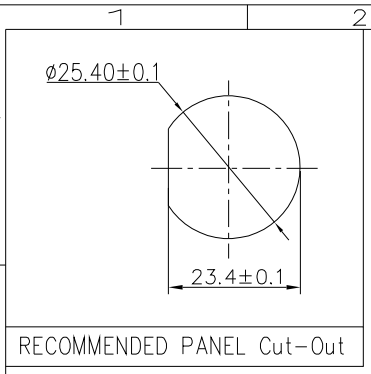


THIS INFORMATION IS CONFIDENTIAL AND IS DISCLOSED TO YOU ON CONDITION THAT NO FURTHER DISCLOSURE IS MADE BY YOU TO OTHER THAN CHOGORI PERSONNEL WITHOUT AUTHORIZATION FROM CHOGORI CORP.

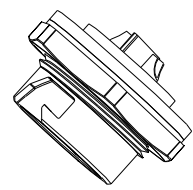
REV.	ECN NO.	DESCRIPTION	SIGN	DATE
C1	N/A	INITIAL DRAWING	Liu	2020/05/12



- Specification:
- 1.Operation Temperature:  $-45^{\circ}\text{C} \sim 105^{\circ}\text{C}$ .
  - 2.Insulation Resistance:  $100\text{M}\Omega$  at DC500V.
  - 3.Contact Resistance:  $<10\text{m}\Omega$ .
  - 4.Withstand Voltage: 2000V AC
  - 5.Operating Current: 20A
  - 6.Operating Voltage: AC 300V
  - 7.Waterproof Rate: IP67 (Mated)
  - 8.Housing: Nylon, Black
  - 9.Male Pin: Copper Alloy, Gold Plated
  - 10.Gasket: Silicon Gray
  - 11.Panel Nut: Nylon, Orange
  - 12.Torque Rate:  $0.8 \sim 1.0\text{N} \cdot \text{m}$
  - 13.RoHS Compliant.
  - 14.Mating Cap P/N: 806-00058-00

22XXX535-01  
Pin Number

2 Pin	3 Pin
P/N: 24002535-01	P/N: 24003535-01
Pin Assignments Front View	



**CHOGORI**

UNIT:mm		DESCRIPTION	Large Series Push Lock Female socket With Male Pin	PART NO	24XXX535-01	DRAWN BY	Liu	DATE	2020/05/12
TOLERANCE	.X $\pm 0.25$ .XX $\pm 0.15$ .XXX $\pm 0.05$ ANGLES $\pm 1^{\circ}$	SCALE	1:1	SHEET	1 OF 1	CHECKED BY	Mo	DATE	2020/05/12
REV.	C1	SIZE	A4	* : Inspection Item		APPROVED BY	Adley	DATE	2020/05/12