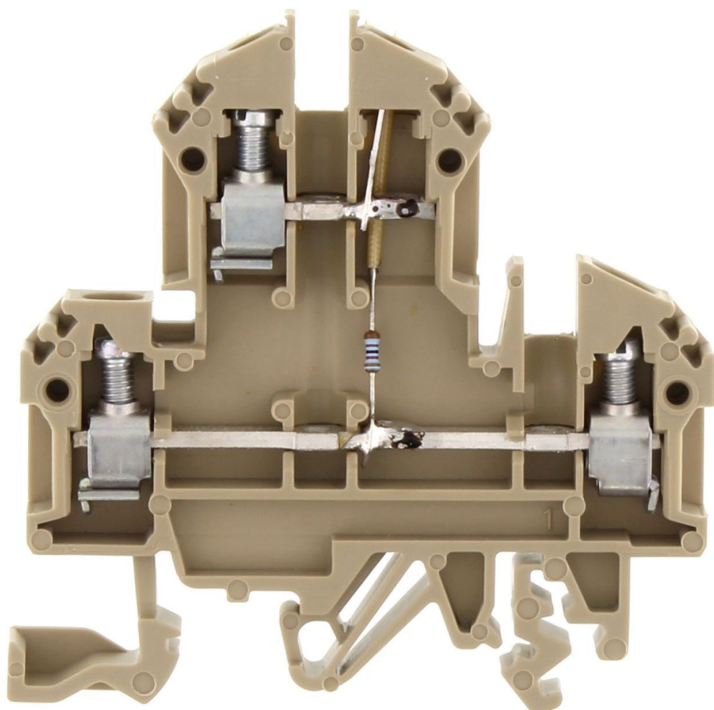


# Data sheet

## 2315.2 RKD 4/LED2(RD)/60V DC BG



Double-level terminal with electronic components, Screw connection, Mounting type:Mounting rail TS 35/7.5 and TS 32, Rated cross-section: 4 mm², Width: 6 mm, Colour: Beige

### Business data

|  |   |
|--|---|
| Article number                             | 2315.2  |
| Article name                               | RKD 4/LED2(RD)/60V DC BG                          |
| GTIN (EAN)                                 | 4044211051020                                     |
| Packaging unit                             | 100   |
| Quantity unit                              | PC  |
| Weight per piece (not including packaging) | 14 g  |
| Weight per piece (including packaging)     | 14.77 g   |
| Unit of weight                             | G   |
| Customs number                             | 85369010  |
| Country of origin                          | BG  |
| Product description                        | Double-level terminals with electronic components |
| Colour                                     | Beige   |

## 2315.2 RKD 4/LED2(RD)/60V DC BG

### Technical data

#### Dimensions

|                  |         |
|------------------|---------|
| Length           | 60.2 mm |
| Width            | 6 mm    |
| Height TS 35/7.5 | 61 mm   |
| Height TS 32     | 65.5 mm |

#### Ratings

|                       |                   |
|-----------------------|-------------------|
| Rated voltage         | 60 DC V           |
| Rated current         | 10 A              |
| Rated cross-section   | 4 mm <sup>2</sup> |
| Rated impulse voltage | 6 kV              |
| Overvoltage category  | III               |
| Contamination degree  | 3                 |

#### Connection data

|  |                     |
|--|---------------------|
| Connection principle                                     | Screw connection    |
| Connection position                                      | Lateral             |
| Number of terminals per level                            | 2                   |
| Number of levels   | 2                   |
| Wire cross-section single-core (rigid) / stranded, min.  | 0.2 mm <sup>2</sup> |
| Wire cross-section single core (rigid)/stranded, max.    | 4 mm <sup>2</sup>   |
| Wire cross-section stranded, min.                        | 0.2 mm <sup>2</sup> |
| Wire cross-section stranded, max.                        | 4 mm <sup>2</sup>   |
| Wire cross-section stranded with wire-end ferrules, min. | 0.2 mm <sup>2</sup> |
| Wire cross-section stranded with wire-end ferrules, max. | 4 mm <sup>2</sup>   |
| Wire cross-section AWG, min.                             | 22                  |
| Wire cross-section AWG, max.                             | 12                  |
| Stripping length   | 9 mm                |
| Screw head   | Slotted             |
| Screw threading  | M 3                 |
| Tightening torque, min.                                  | 0.5 Nm              |
| Tightening torque, max.                                  | 1 Nm                |

## 2315.2 RKD 4/LED2(RD)/60V DC BG

### Technical data

#### Materials

|                           |               |
|---------------------------|---------------|
| Insulation housing        | Polyamide 6.6 |
| Flammability class UL 94  | V-2           |
| Working temperature, min. | -40 °C        |
| Working temperature, max. | 105 °C        |

#### Further technical data

|                                       |                                   |
|---------------------------------------|-----------------------------------|
| Mounting type                         | Mounting rail TS 35/7.5 and TS 32 |
| Gauge plug acc. to EN 60 947-1        | A4                                |
| Number of cross-connection channels   | 2                                 |
| End plate required                    | ✓                                 |
| Voltage illuminated display           | 60 DC V                           |
| Cross-current via illuminated display | 5 mA                              |
| Colour of lamp                        | Red                               |

#### Environmental Product Compliance

|                                |            |
|--------------------------------|------------|
| REACH Conform                  | yes        |
| REACH Reference date           | 2023-06-14 |
| REACH Candidate Substance Note | No         |
| RoHS Conform                   | yes        |

### Approvals

#### Standards and regulations

|                      |                |
|----------------------|----------------|
| EAC approval         | TR ZU 004/2011 |
| EAC approval granted | yes            |

#### CSA approval

|                                  |              |
|----------------------------------|--------------|
| CSA approval                     | C22.2 No 158 |
| CSA approval granted             | yes          |
| CSA Usegroup C: rated voltage    | 300 V        |
| CSA Usegroup C: rated current    | 25 A         |
| CSA wire cross-section AWG, min. | 22           |
| CSA wire cross-section AWG, max. | 12           |
| CSA stripping length             | 9 mm         |
| CSA torque, max.                 | 1 Nm         |
| CSA torque, min.                 | 0.5 Nm       |

#### KEMA KEUR approval

|   |                     |
|---|---------------------|
| KEMA KEUR approval                                | EN 60947-7-1:2009   |
| KEMA KEUR approval granted                        | yes                 |
| KEMA rated voltage                                | 500 V               |
| KEMA rated current                                | 32 A                |
| KEMA rated impulse voltage                        | 6 kV                |
| KEMA wire cross-section single core (rigid), min. | 0.2 mm <sup>2</sup> |
| KEMA wire cross-section single-core (rigid), max. | 4 mm <sup>2</sup>   |
| KEMA wire cross-section stranded, min.            | 0.2 mm <sup>2</sup> |
| KEMA wire cross-section stranded, max.            | 4 mm <sup>2</sup>   |

### Approvals

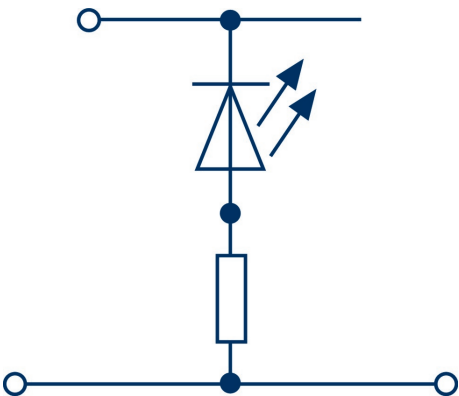
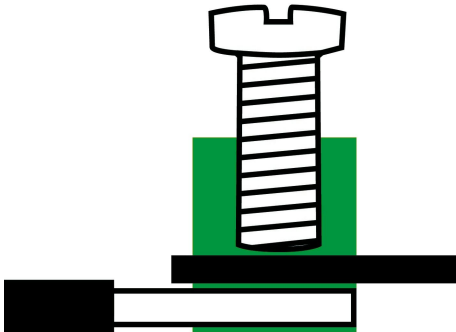
#### UL Recognized

|   |         |
|---|---------|
| UL approval   | UL 1059 |
| UL Usegroup C: rated voltage                        | 300 V   |
| UL Usegroup C: rated current                        | 30 A    |
| UL wire cross-section single-core (rigid) AWG, min. | 22      |
| UL wire cross-section single-core (rigid) AWG, max. | 10      |
| UL wire cross-section stranded AWG, min.            | 22      |
| UL wire cross-section stranded AWG, max.            | 10      |
| UL torque   | 7 Lb In |
| UL wire material                                    | Cu      |
| UL factory wiring                                   | 1       |
| UL field wiring                                     | 1       |
| UL Recognized                                       | 1       |

#### German Lloyd approval

|                            |                    |
|----------------------------|--------------------|
| DNV GL Location Classes    | C                  |
| DNV GL approval granted    | 1                  |
| DNV GL rated cross-section | 4 mm <sup>2</sup>  |
| DNV GL rated current       | 34 A               |
| DNV GL rated voltage       | 500 V              |
| DNV GL test standard       | IEC 60947-7-1:2002 |

Media



**M3**



### Accessories

#### End plate



End plate, Width: 1.5 mm, Colour: Beige

| Article number | Article name | GTIN (EAN)    | Packaging unit |
|----------------|--------------|---------------|----------------|
| <u>2101.2</u>  | AP 4 BG      | 4044211151652 | 20             |

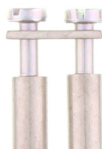
#### Insulation plate



Insulation plate, Colour: Beige

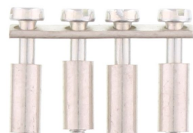
| Article number | Article name | GTIN (EAN)    | Packaging unit |
|----------------|--------------|---------------|----------------|
| <u>2566.2</u>  | TRS 3 BG     | 4044211053567 | 100 ST         |

#### Cross-connector



Cross-connector, No. of poles: 2, Mounting type: Can be screwed on, Width: 10.5 mm, Rated cross-section: 4 mm<sup>2</sup>, Colour: natural

| Article number | Article name | GTIN (EAN)    | Packaging unit |
|----------------|--------------|---------------|----------------|
| <u>2087.0</u>  | Q 2          | 4044211048952 | 50 ST          |



Cross-connector, No. of poles: 4, Mounting type: Can be screwed on, Width: 22.7 mm, Rated cross-section: 4 mm<sup>2</sup>, Colour: natural

| Article number | Article name | GTIN (EAN)    | Packaging unit |
|----------------|--------------|---------------|----------------|
| <u>2089.0</u>  | Q 4          | 4044211048976 | 20 ST          |



Cross-connector, No. of poles: 10, Mounting type: Can be screwed on, Width: 59.3 mm, Rated cross-section: 4 mm<sup>2</sup>, Colour: natural

| Article number | Article name | GTIN (EAN)    | Packaging unit |
|----------------|--------------|---------------|----------------|
| <u>2090.0</u>  | Q 10         | 4044211048983 | 10 ST          |

## 2315.2 RKD 4/LED2(RD)/60V DC BG

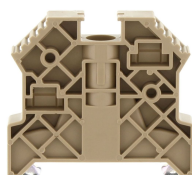
### Cross-connector



Cross-connector, No. of poles: 3, Mounting type: Can be screwed on, Width: 16.6 mm, Rated cross-section: 4 mm², Colour: natural

| Article number | Article name | GTIN (EAN)    | Packaging unit |
|----------------|--------------|---------------|----------------|
| <u>2088.0</u>  | Q 3          | 4044211048969 | 50 ST          |

### End stop



End stop, Mounting type: Mounting rail TS 35/7.5, Width: 9.5 mm, Colour: Beige

| Article number | Article name  | GTIN (EAN)    | Packaging unit |
|----------------|---------------|---------------|----------------|
| <u>2828.0</u>  | ES 35/K/ST BG | 4044211055547 | 50             |

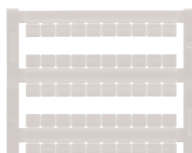
### Screwdriver



Screwdriver with bare blade, Colour: Black-grey

| Article number | Article name | GTIN (EAN)    | Packaging unit |
|----------------|--------------|---------------|----------------|
| <u>1086.0</u>  | SDB 0,6x3,5  | 4044211014797 | 1 ST           |

### Quick marking



Terminal marker / Pocket Maxicard, Length: 5 mm, Width: 6 mm, Colour: White

| Article number | Article name   | GTIN (EAN)    | Packaging unit |
|----------------|----------------|---------------|----------------|
| <u>4702.7</u>  | PMC SB 6/50 WH | 4044211089986 | 500 ST         |



# Data sheet

## 2315.2 RKD 4/LED2(RD)/60V DC BG



### Socket plug



Socket plug, M 2.5, Colour: natural

| Article number | Article name | GTIN (EAN)    | Packaging unit |
|----------------|--------------|---------------|----------------|
| <u>2075.0</u>  | STB 8,5/2,3  | 4044211048839 | 50 ST          |

### Test plug



Test plug, Colour: Red

| Article number | Article name | GTIN (EAN)    | Packaging unit |
|----------------|--------------|---------------|----------------|
| <u>2007.0</u>  | PS 2,3       | 4044211048105 | 20 ST          |