

## EMP Protector 3400.17.0380

### Description

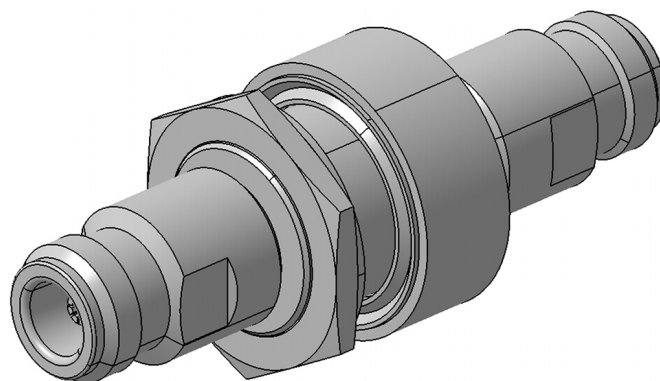
Quarter-wave stub technology

#### Benefits

Broad-band design

The protector can also be installed reversely

Compliant to IEC 61643-21



### Product Configuration

Main path connectors  
Mounting and grounding  
Side of bulkhead

Port 1: unprotected, N jack (female) - Port 2: protected, N jack (female)  
MH69 (bulkhead mounting), brk (bracket)  
protected side

### Technical Data

#### Electrical Data

Impedance	50 $\Omega$
Frequency range	6000 - 18000 MHz
Return loss	$\geq 20$ dB
Insertion loss	$\leq 0.3$ dB
RF CW power	$\leq 100$ W
PIM 3rd order	not specified

Surge current handling capability	50 multiple kA (test pulse 8/20 $\mu$ s)
Residual pulse energy	5 $\mu$ J typically (test pulse 4 kV 1.2/50 $\mu$ s / 2 kA 8/20 $\mu$ s) main path - protected side

#### Mechanical Data

Number of matings	500
Weight	225 g

#### Environmental Data

Operating temperature	-40 °C to +85 °C
Waterproof degree	IP65 (according to IEC 60529, data refer to the coupled state)
2011/65/EU (RoHS - including 2015/863 and 2017/2102)	compliant

#### Material Data

Piece Parts	Material	Surface Plating
Housing	Brass	SUCOPLATE (R) Plating
Port 1 center contact	Copper Beryllium Alloy	Gold Plating (without Nickel underplating)
Port 2 center contact	Copper Beryllium Alloy	Gold Plating (without Nickel underplating)

### Related Documents

Outline drawing	DOU-00003513
Mounting instruction	DOC-0000176104