

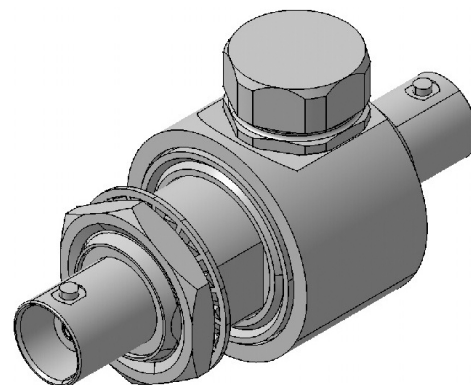
EMP Protector 3401.01.A

Description

GDT technology up to 1.0 GHz

Benefits

DC continuity for remote powering
The protector can also be installed reversely
Delivered without gas discharge tube
Data refer to GDT 9071.99.0547, 230 V
Compliant to IEC 61643-21



Product Configuration

| | |
|------------------------|---|
| Main path connectors | Port 1: <u>unprotected</u> , BNC jack (female) - Port 2: <u>protected</u> , BNC jack (female) |
| Mounting and grounding | MH12 (bulkhead mounting), brk (bracket) |
| Side of bulkhead | protected side |

Technical Data

Electrical Data

| | | |
|-----------------|---------------|-----------------|
| Impedance | 50 Ω | |
| Frequency range | 0 - 1000 MHz | 0 - 300 MHz |
| Return loss | ≥ 19 dB | ≥ 26.44 dB |
| Insertion loss | ≤ 0.1 dB | ≤ 0.1 dB |
| RF CW power | ≤ 150 W | ≤ 150 W |
| PIM 3rd order | not specified | |

| | |
|-----------------------------------|---|
| Surge current handling capability | 30 single / 20 multiple kA (test pulse 8/20 μ s) |
| Residual pulse energy | 350 μ J typically (test pulse 4 kV 1.2/50 μ s / 2 kA 8/20 μ s) main path - protected side |

Mechanical Data

| | |
|-------------------|------|
| Number of matings | 500 |
| Weight | 75 g |

Environmental Data

| | |
|--|--|
| Operating temperature | -40 °C to +85 °C |
| Waterproof degree | IP20 (according to IEC 60529, data refer to the coupled state) |
| 2011/65/EU (RoHS - including 2015/863 and 2017/2102) | compliant |

Material Data

| Piece Parts | Material | Surface Plating |
|-----------------------|------------------------|--|
| Housing | Brass | SUCOPLATE (R) Plating |
| Port 1 center contact | Copper Beryllium Alloy | Gold Plating (without Nickel underplating) |
| Port 2 center contact | Copper Beryllium Alloy | Gold Plating (without Nickel underplating) |

Related Documents

| | |
|----------------------|----------------|
| Outline drawing | DOU-00057120.1 |
| Mounting instruction | DOC-0000176104 |

Remarks

| | |
|----------------------|--|
| Customer part number | NATO: NSN 5920-12-325-4220, 5935-99-110-3099 |
|----------------------|--|