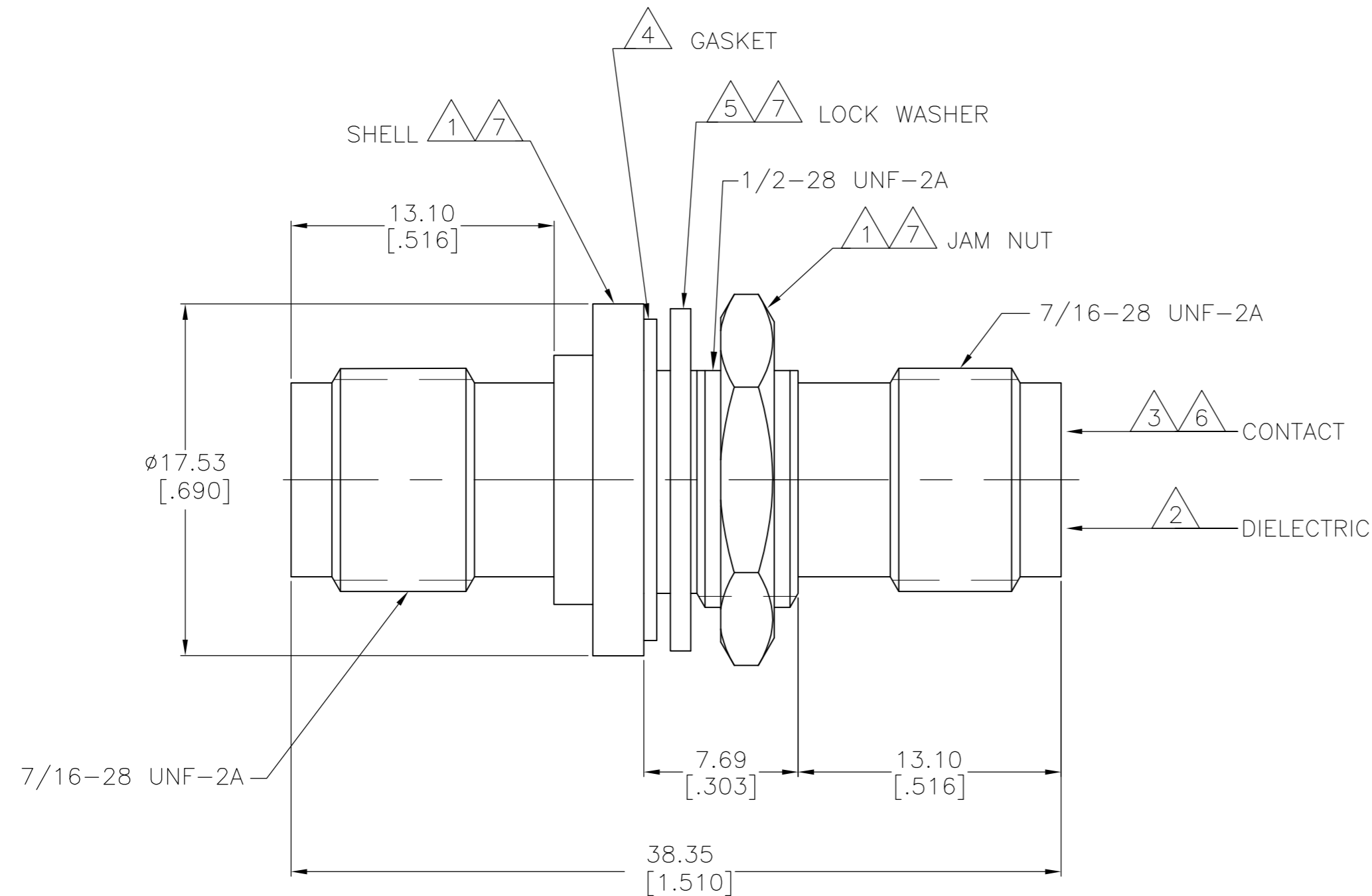
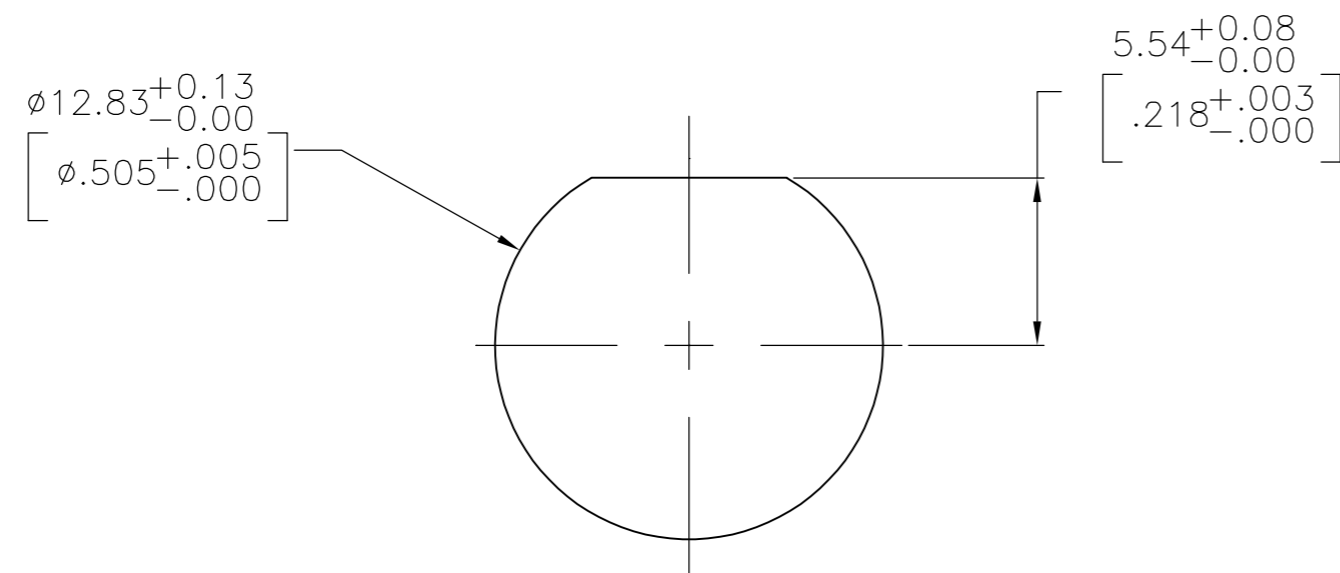


THIS DRAWING IS UNPUBLISHED. RELEASED FOR PUBLICATION  
 © COPYRIGHT - By - ALL RIGHTS RESERVED.

LOC	DIST	REVISIONS					
		P	LTR	DESCRIPTION	DATE	DWN	APVD
AJ	17		D1	REVISED PER ECO-11-005030	11MAR11	RK	HMR
			E	REVISED PER ECO-12-002406	08FEB12	TITAN	MARTIN



- ① BRASS
- ② DELRIN
- ③ PHOSPHOR BRONZE
- ④ SILICONE RUBBER
- ⑤ STAINLESS STEEL
- ⑥ GOLD PLATE, 0.76µm [.000030] MINIMUM THICKNESS
- ⑦ NICKEL PLATE, 2.54µm [.000100] MINIMUM THICKNESS
- 8. GASKET TO BE RECESSED INSIDE THE MOAT
- 9. MAXIMUM PANEL THICKNESS IS 3.18 [.125]
- 10. ALL DIMENSION FOR ADAPTER ARE REFERENCE ONLY



RECOMMENDED PANEL CUTOUT

OBSOLETE 221500-1

PART NUMBER

THIS DRAWING IS A CONTROLLED DOCUMENT.		DWN MICHAEL E. COWHER 03-MAR-98	TE Connectivity																			
DIMENSIONS: mm [INCHES]		CHK MICHAEL E. COWHER 02-APR-98																				
TOLERANCES UNLESS OTHERWISE SPECIFIED:		APVD MICHAEL E. COWHER 02-APR-98	NAME JACK TO JACK, ADAPTER, BULKHEAD, TNC																			
<table border="1"> <tr><td>0 PLC</td><td>±</td><td>-</td></tr> <tr><td>1 PLC</td><td>±</td><td>-</td></tr> <tr><td>2 PLC</td><td>±</td><td>.25 [.010]</td></tr> <tr><td>3 PLC</td><td>±</td><td>-</td></tr> <tr><td>4 PLC</td><td>±</td><td>-</td></tr> <tr><td>ANGLES</td><td>±</td><td>-</td></tr> </table>		0 PLC	±	-	1 PLC	±	-	2 PLC	±	.25 [.010]	3 PLC	±	-	4 PLC	±	-	ANGLES	±	-	PRODUCT SPEC -	SIZE A2	CAGE CODE 00779
0 PLC	±	-																				
1 PLC	±	-																				
2 PLC	±	.25 [.010]																				
3 PLC	±	-																				
4 PLC	±	-																				
ANGLES	±	-																				
MATERIAL SEE NOTES		FINISH SEE NOTES	WEIGHT -	DRAWING NO C=221500																		
		CUSTOMER DRAWING		RESTRICTED TO -																		
		SCALE 4:1		SHEET 1 of 1																		
				REV E																		