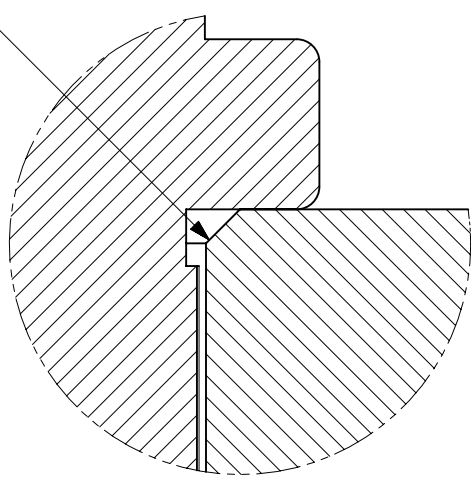
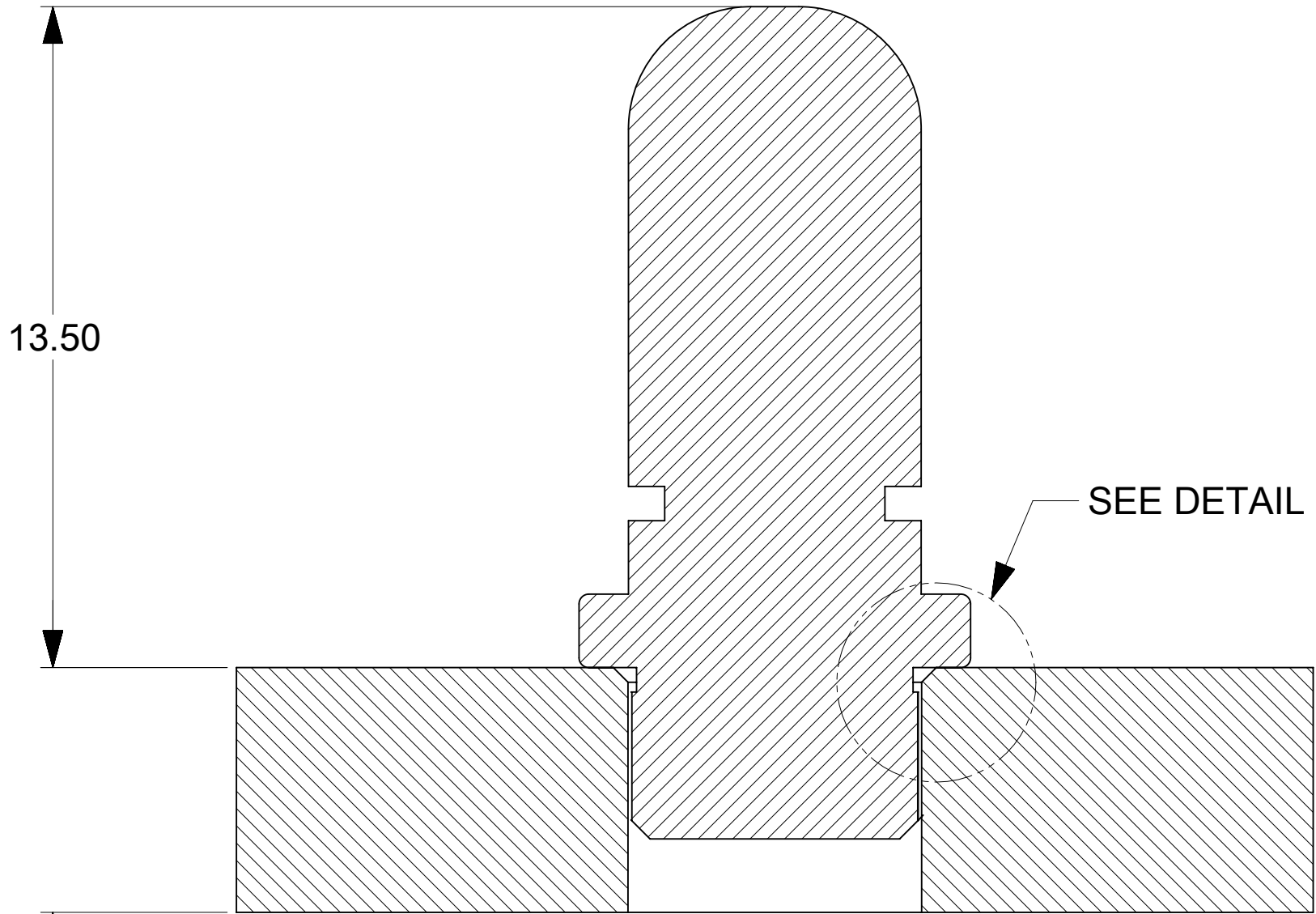
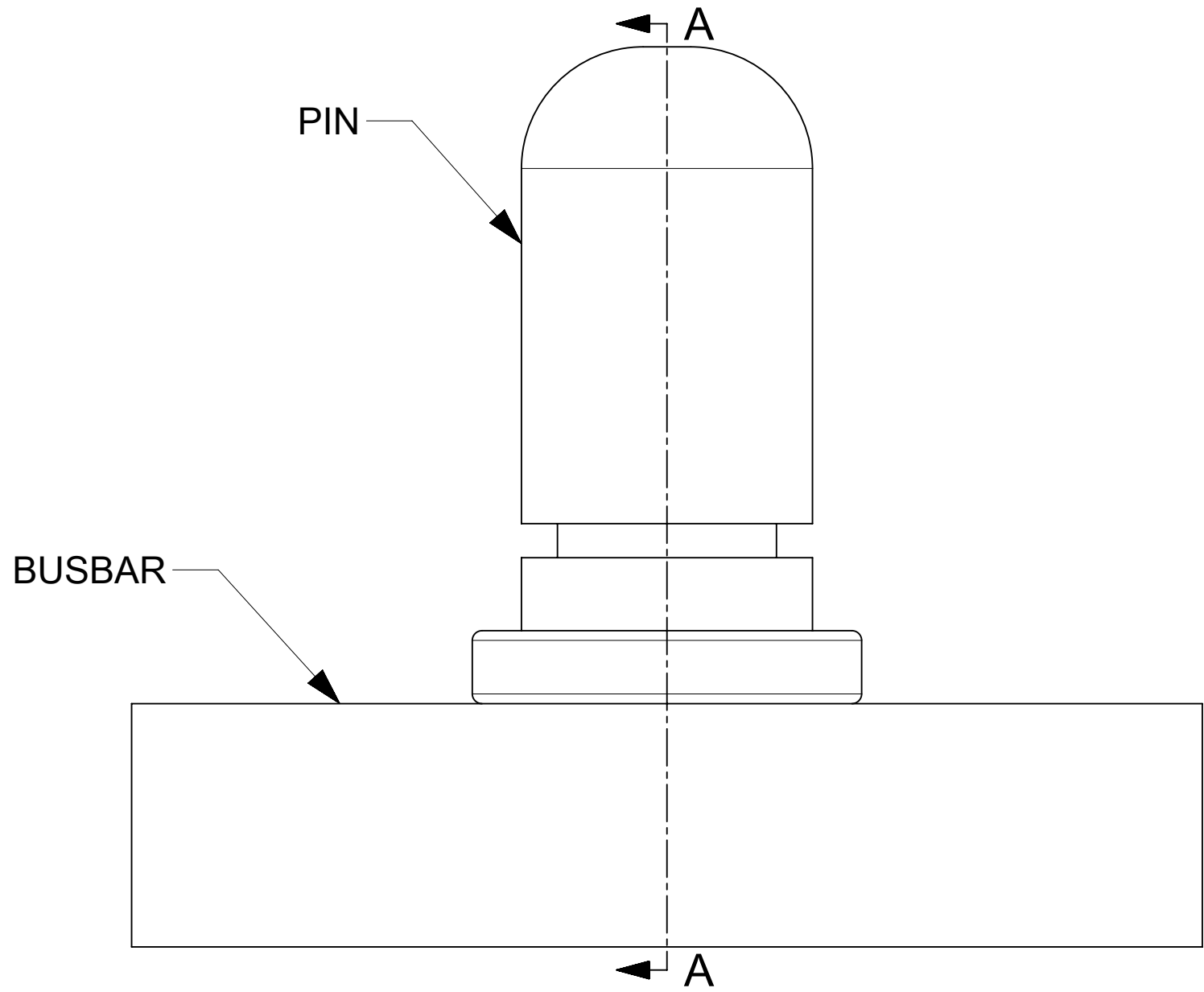
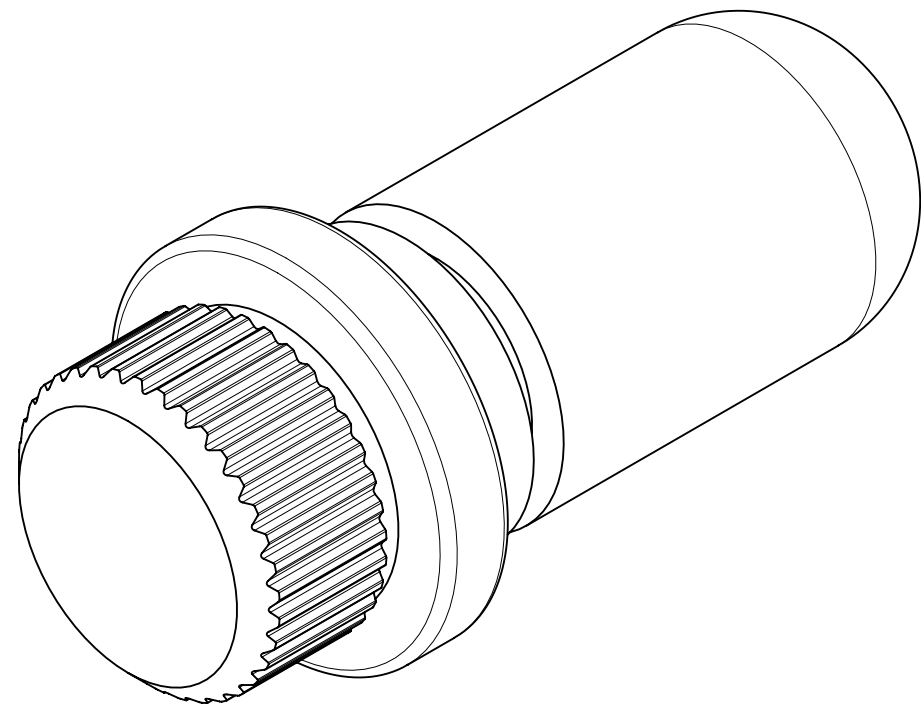
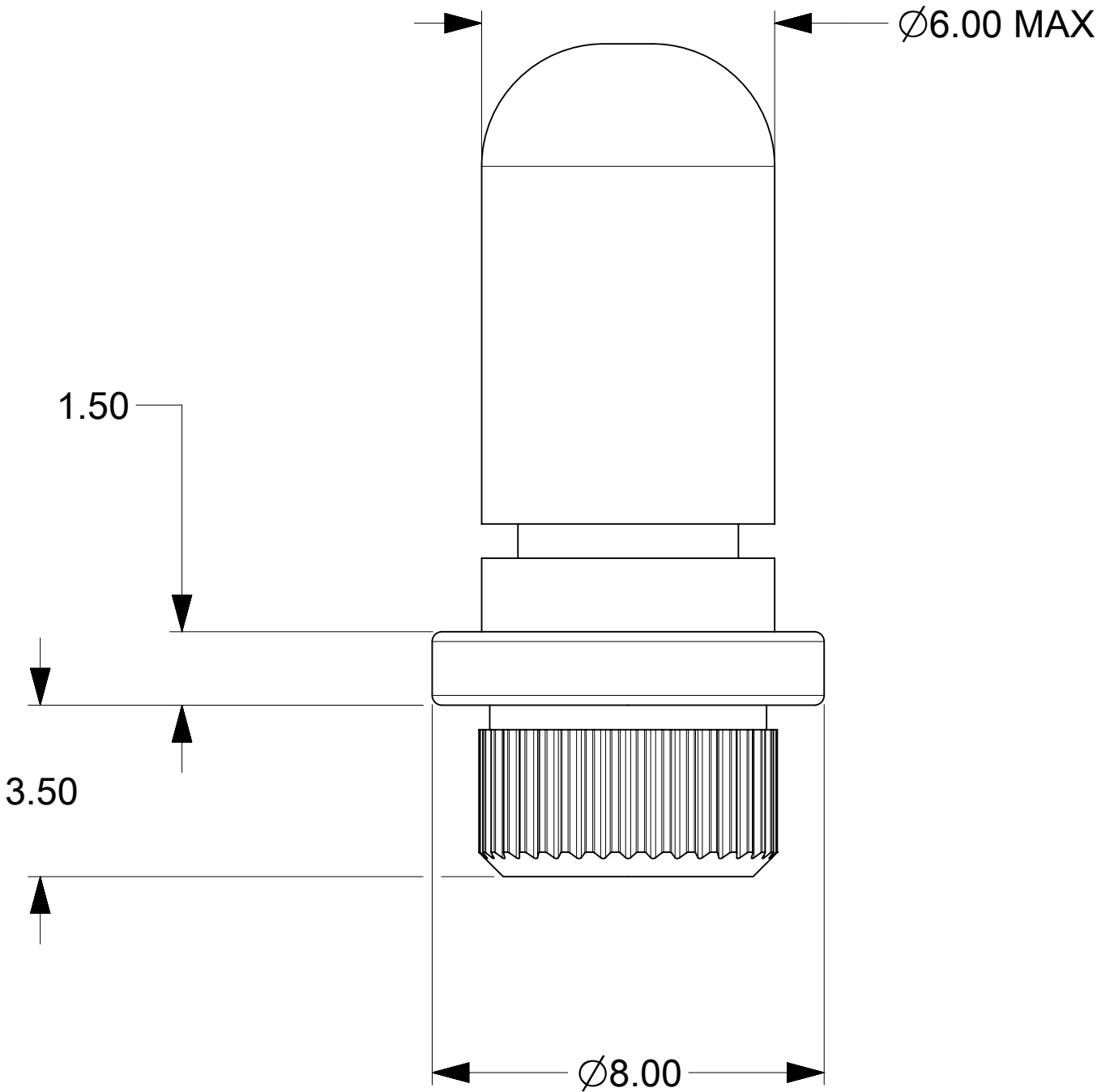


C 0.30  
ON BUSBAR HOLE



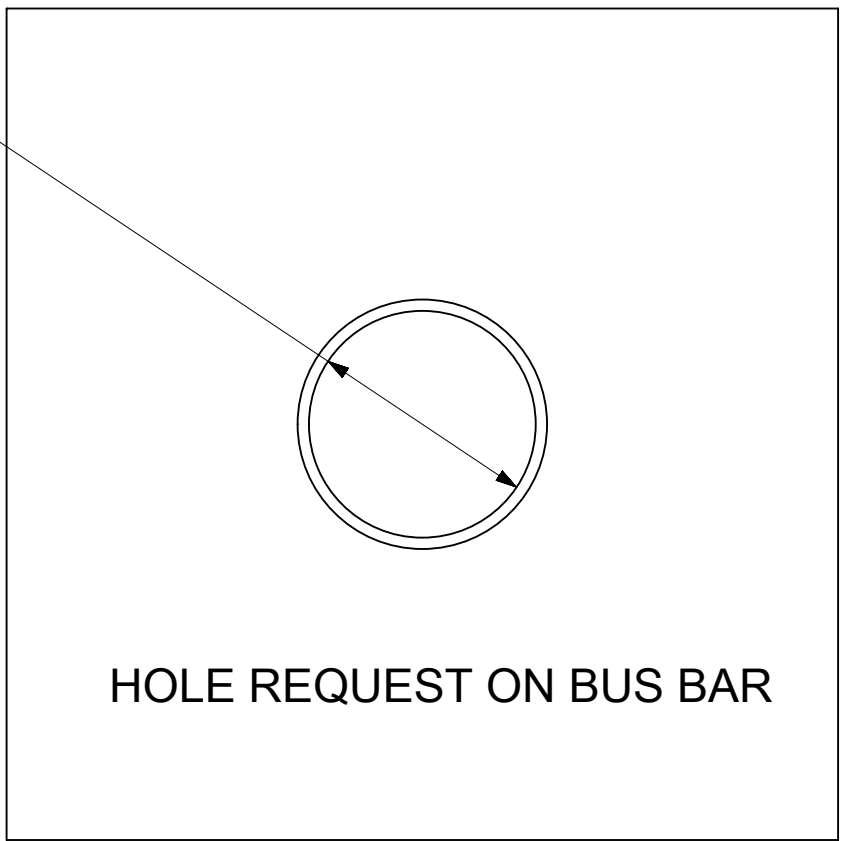
DETAIL B  
SCALE 15:1



(5.00)  
SEE NOTE 6

SECTION A-A


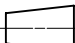
Ø6.00 ±0.02  
(USE REAMER)



BUS BAR LAYOUT: COMPONENT SIDE

NOTES:

- MATERIALS:  
BASE METAL: HIGH CONDUCTIVE COPPER ALLOY  
PLATING ON BODY: 3.18 MICRON MIN SILVER OVER 1.27 MICRON MIN NICKEL
- SILVER COMPONENTS WILL BE SUPPLIED TARNISH FREE  
BUT MAY TARNISH OVER TIME.
- MINIMUM RECOMMENDED BUSBAR THICKNESS IS 1.5MM
- PRODUCT SPECIFICATION: 2178840001-PS.
- APPLICATION SPECIFICATION: 2178840001-AS
- PACKAGING SPECIFICATION: BULK PACKAGING AS PER 2183350001-PK

THIS DRAWING CONTAINS INFORMATION THAT IS PROPRIETARY TO MOLEX ELECTRONIC TECHNOLOGIES, LLC AND SHOULD NOT BE USED WITHOUT WRITTEN PERMISSION														
DIMENSION UNITS		SCALE	CURRENT REV DESC: PRODUCT RELEASE				<div>molex</div> <div>6MM SW1 PRESS-FIT LOCKING PIN</div>							
mm	5:1													
GENERAL TOLERANCES (UNLESS SPECIFIED)			EC NO: 741091 DRWN: SREENA1 2022/11/24 CHK'D: GSHARMA 2023/03/06 APPR: HTHYAGARAJ 2023/03/06				PRODUCT CUSTOMER DRAWING							
ANGULAR TOL ± 0.5 °														
4 PLACES	±						DOCUMENT NUMBER					DOC TYPE	DOC PART	REVISION
3 PLACES	±						2183350001					PSD	000	B2
2 PLACES	±	0.15												
1 PLACE	±	0.25	INITIAL REVISION:				SHEET NUMBER							
0 PLACES ±			DRWN: MKP 2021/03/30		APPR: NCSR 2021/03/31		MATERIAL NUMBER		CUSTOMER		1 OF 1			
			THIRD ANGLE PROJECTION		DRAWING								SERIES	
DRAFT WHERE APPLICABLE MUST REMAIN WITHIN DIMENSIONS							D-SIZE		218335		2183350001		GENERAL MARKET	