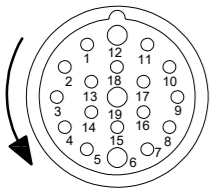


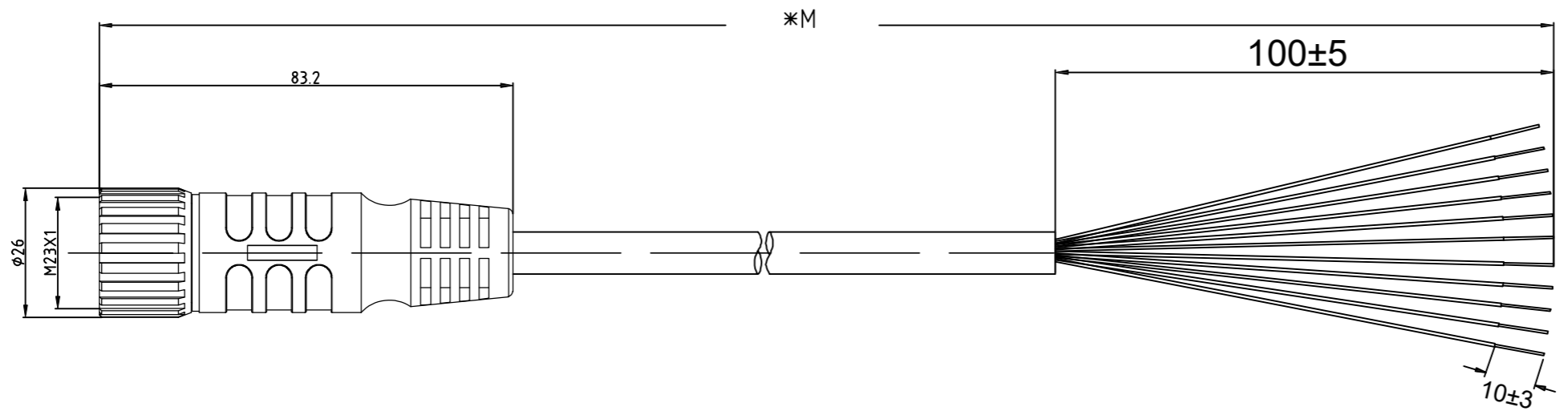
FEMALE END VIEW



- 1. VT
- 2. RD
- 3. GY
- 4. RD/BU
- 5. GN
- 6. BU
- 7. GY/PK
- 8. WH/GN
- 9. WH/YE
- 10. WH/GY
- 11. BK
- 12. GN/YE
- 13. YE/BN
- 14. BN/GN
- 15. WH
- 16. YE
- 17. PK
- 18. GY/BN
- 19. BN

HARTING P/N	Type of cable	Cable length(mm)
21373500D74050	PUR	5000 ⁺²⁰⁰ ₋₀
21373500D74100	PUR	10000 ⁺⁴⁰⁰ ₋₀
21373500D74150	PUR	15000 ⁺⁶⁰⁰ ₋₀

SPECIFICATIONS	
CONTACT CARRIER MATERIAL/COLOR	PBT/WHITE
MOLDED HEAD MATERIAL/COLOR	TPU/BLACK
CONTACT MATERIAL/COLOR	BRASS/SILVER
COUPLING NUT MATERIAL/PLATING	ZINC ALLOY/NICKEL
RATED CURRENT	9A(PINS 6,12,19),2A(ALL OTHERS)
RATED VOLTAGE	150 V
OUTER CABLR JACKET MATERIAL/COLOR	PUR/BLACK
CONDUCTOR INSULATION MATERIAL	PVC
NUMBER OF CONDUCTORS (AWG)	3X18AWG+16X22AWG
OPERATING TEMPERATURE	-40°C — +80°C
PROTECTION CLASS	IEC IP67



	All rights reserved Department HCS - CN	Created by LINI	Inspected by LIANL	Standardisation LIANL	Date 2022-11-02	State Final release	Doc-Key / ECM-Nr. /
HARTING Customised Solutions D-32339 Espelkamp		Title M23_19P FE,Int-thread,STR PUR cable,xxM	Type TB	Number 2137 35 00 D 74 XXX	Rev. A Page 1/1		

Rev.	Description	Appr.	Date
A	First issue.	Ivy Lin	11/02/22