

length when assembled app. 36,5mm

contact face
acc. to IEC 61076-2-113
A (2:1)

width across flats 18

width across flats 19

width across flats 15

panel cut out

min. 2 - max. 5

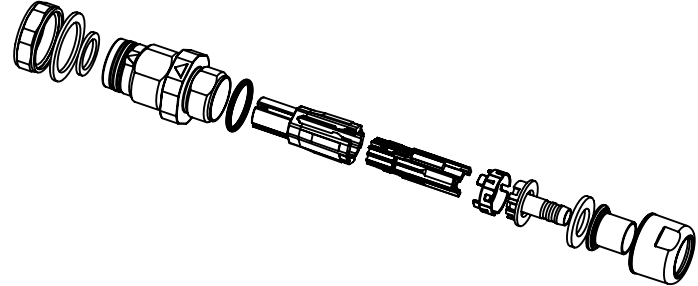
$\varnothing 16,3 \pm 0,2$

$14,3 \pm 0,2$

- order contacts separately
- recommended torque of counter nut: 2Nm

contact type	wire gauge	P/N contact
signal	AWG 28-24	21 01 100 9023
	AWG 26-23	21 01 100 9021
power	AWG 26-23	21 01 100 9984

cable description	cable \varnothing	P/N crimping insert	P/N crimping tool	P/N mounting tool
HEW 3HAA2485-1	7,0mm	09 99 000 0650	09 99 000 0647	09 99 000 0639



	All Dimensions in mm Original Size DIN A4		Scale 1:1	Free size tol.	Ref.	
	All rights reserved Department EL PD		Created by HASSE	Inspected by HAEMMERLING	Standardisation 302077	Sub.
HARTING D-32339 Espelkamp		Title M12-SD-CC-CRIMP-8P-YCOD-F-STR-CF			Date 2021-01-22	State Final Release
		Type TB	Number 21038612844		Doc-Key / ECM-Nr. 100839538/UGD/001/B 500000187662	Rev. B
					Page 1/1	