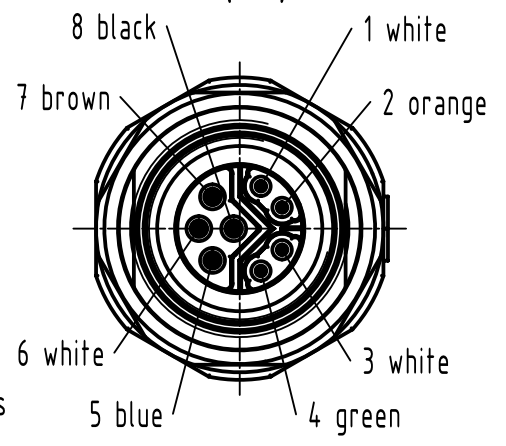


complete length when assembled app. 42mm

contact face  
acc. to IEC 61076-2-113  
A (2:1)

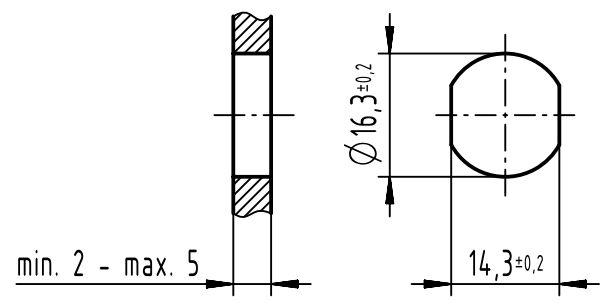


width across flats 18

width across flats 19

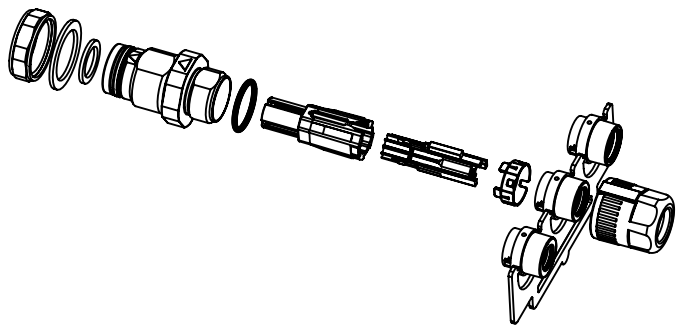
width across flats 15

panel cut out



- order contacts separately
- recommended torque of counter nut: 2Nm

cable $\varnothing$	contact type	wire gauge	P/N contact
5,7-8,8mm	signal	AWG 28-24	21 01 100 9023
		AWG 26-23	21 01 100 9021
	power	AWG 22-18	21 01 100 9983
		AWG 26-23	21 01 100 9984



	All rights reserved		Scale 1:1	Free size tol.	Ref.	
	Department EL PD		Created by HASSE	Inspected by HAEMMERLING	Standardisation 302077	Sub.
HARTING		Title M12-SD-CC-CRIMP-8P-YCOD-F-STR-SHLD			Date 2021-01-22	State Final Release
D-32339 Espelkamp		Type TB	Number 21038612825		Doc-Key / ECM-Nr. 100803253/UGD/000/C 500000187662	Rev. C
						Page 1/1