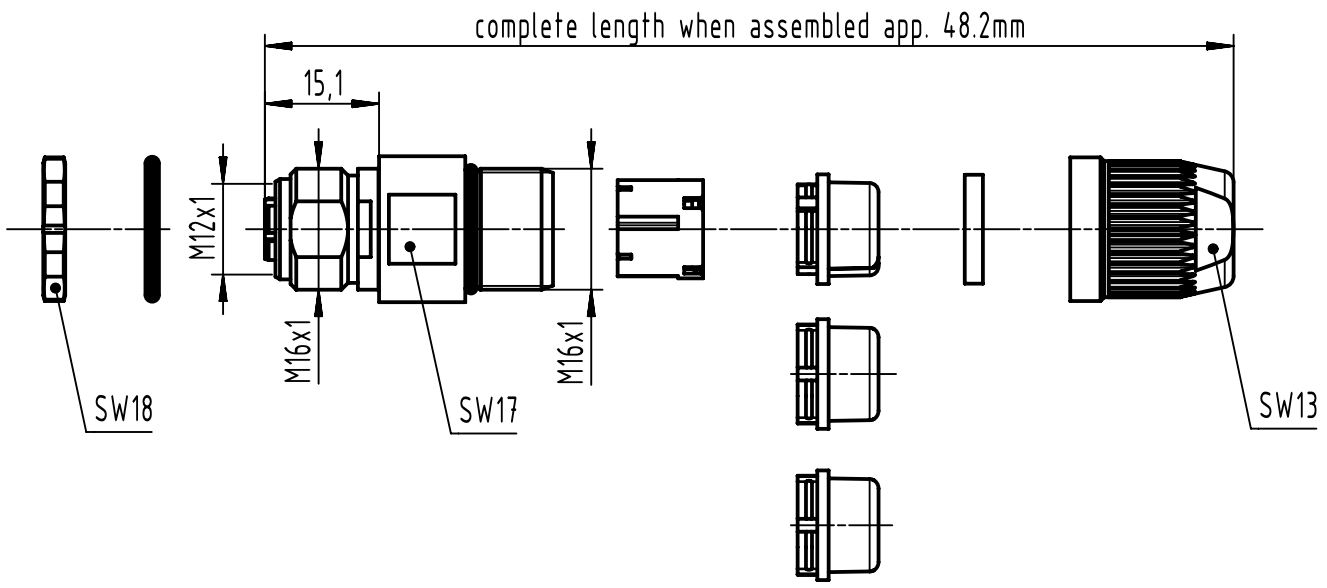
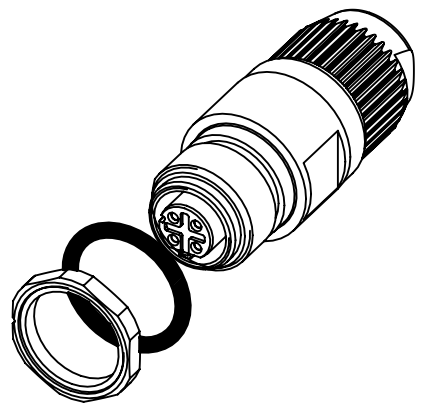
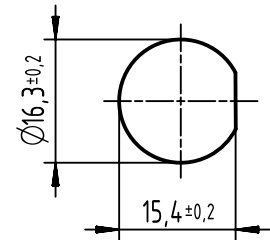


1 2 3 4 5 6

A
B
C
D



panel cut out
(1:1)



cable Ø			conductor cross section
5.5-7.2mm	4.5-5.4mm	7.0-8.8mm	
sealing			0.14 - 0.34mm ² AWG26-AWG22
black	transparent	beige	

	All Dimensions in mm Original Size DIN A4	Scale	Free size tol.		Ref.
		1:1			Sub.
All rights reserved Department EL PD	Created by BUSSMANN	Inspected by	Standardisation	Date	State
		HASSEBROCKS		2022-09-16	Final Release
HARTING D-32339 Espelkamp	Title			Doc-Key / ECM-Nr.	
	M12-CC-IDC-4P-DCOD-F-STR-SHLD			100182121/UGD/004/G 500000217565	
Type		Number		Rev.	Page
TB		21033812425		G	1/1