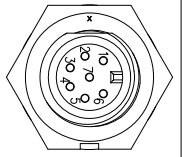
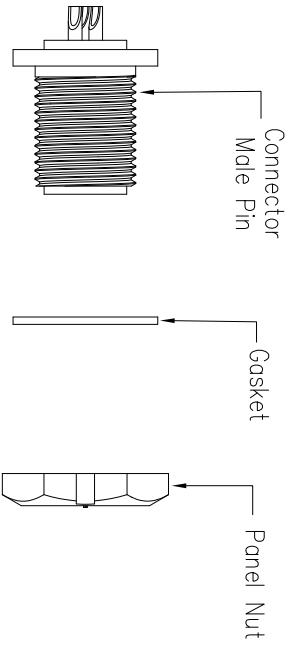
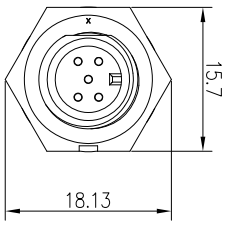
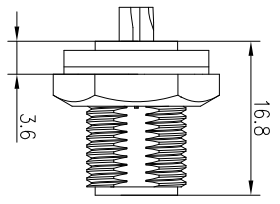
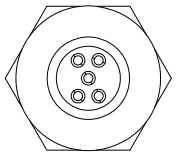


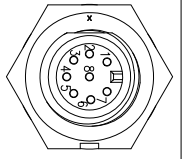
Recommended Panel Cut-out

21XXX515-01  
Pin Number



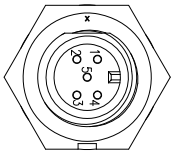
7 Pin

P/N: 21007515-01



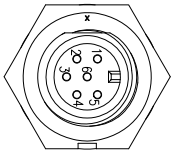
8 Pin

P/N: 21008515-01



5 Pin

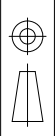
P/N: 21005515-01



6 Pin

P/N: 21006515-01

Pin Assignments Front View



UNIT: mm  
TOLERANCE  
.X ±0.25  
.XX ±0.15  
.XXX ±0.05  
ANGLES ±1°

DESCRIPTION  
Mini Series Screw Type  
Front Mount With Male Pin

SCALE: 4:5  
REV: C1  
SIZE: A4  
SHEET: 1 OF 1  
\*: Inspection Item

**CHOGORI**

- Specification:
1. Operation Temperature: -45°C~105°C.
  2. Insulation Resistance: 100MΩat DC 500V.
  3. Contact Resistance: <10mΩ.
  4. Withstand Voltage: 1500V AC.
  5. Operating Current: 2A.
  6. Operating Voltage: AC 50V.
  7. Waterproof Rate: IP67(Mated).
  8. Connector: Nylon+GF, Black.
  9. Panel Nut: Nylon, Black.
  10. Gasket: Silicon, Gray.
  11. Male Pin: Copper Alloy, Gold Plated.
  12. Torque Rate: 0.5~0.7N•m.
  13. RoHS Compliant.
  14. UL Compliant.
  15. Mating Cap P/N: 806-00028-00

REV.	ECN NO.	DESCRIPTION	SIGN	DATE
C1	N/A	INITIAL DRAWING	Victory	2019/08/20

PART NO	DRAWN BY	DATE
21XXX515-01	Victory	2019/08/20
DWG NO	CHECKED BY	DATE
	Ivan	2019/08/20
CUSTOMER	APPROVED BY	DATE
	Ponson	2019/08/20