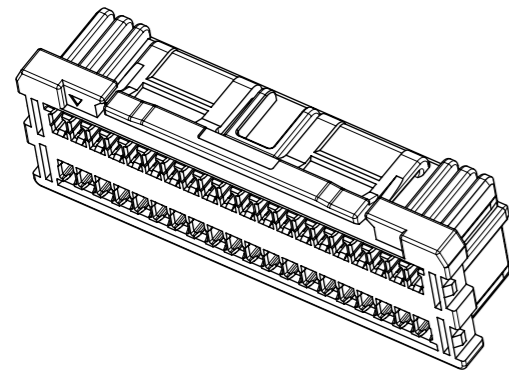


NOTE



- 1. 適合ターミナル: 201649
APPLICABLE TERMINAL: 201649
- 2. 嵌合相手: 201645, 201646
MATE WITH: 201645, 201646

△ 3. 極数/2=偶数 に適用
APPLY FOR CKT. SIZE/2 = EVEN

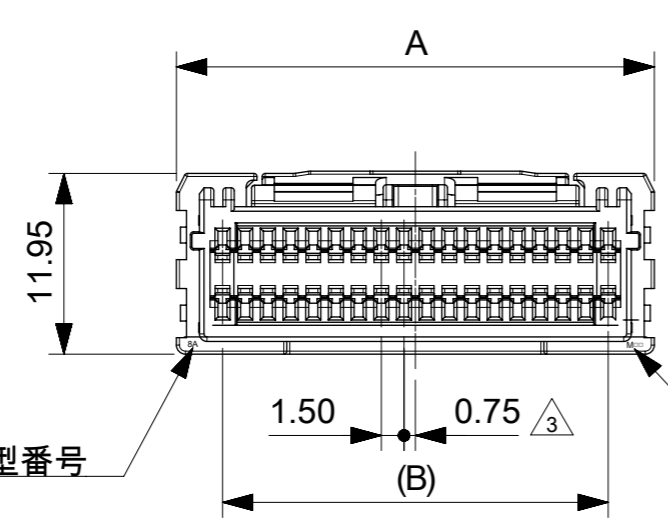
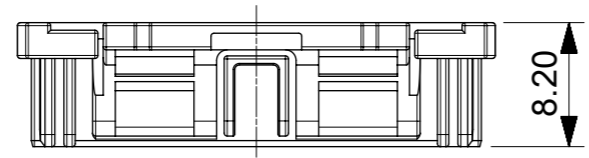
4. コネクタの詳細な取扱いにつきましては、アプリケーション仕様書 (2016440000 PS A**)を参照してください
PLEASE REFER TO THE APPLICATION SPECIFICATION (2016440000 PS A**) ABOUT THE DETAILED HANDLING OF THE CONNECTOR.

5. コネクタの仕様につきましては、製品仕様書(2016440000 PS 0**)を参照してください
PLEASE REFER TO THE PRODUCT SPECIFICATION (2016440000 PS 0**) ABOUT THE DETAILED HANDLING OF THE CONNECTOR

6. 製品番号 MATERIAL NO.

201644 2***

極数 CIRCUIT SIZE	色 COLOR	NO.	COLOR
		0	NATURAL
		1	BLACK



キャビティ番号及び金型番号
CAVITY & MOLD NO.

トレードマーク
TRADE MARK

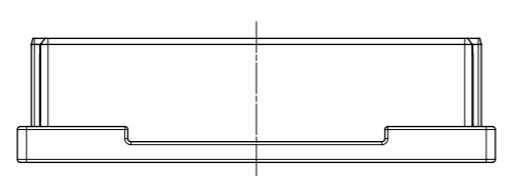
回路番号1マーク
CKT NO.1 MARK

回路番号1
CKT NO.1

回路番号N-1
CKT NO.N-1

回路番号2
CKT NO.2

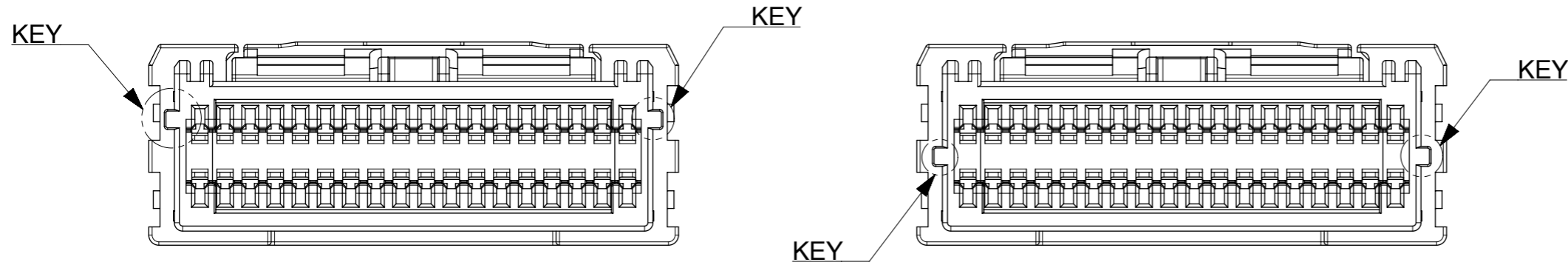
回路番号N
CKT NO.N



THIS DRAWING CONTAINS INFORMATION THAT IS PROPRIETARY TO MOLEX ELECTRONIC TECHNOLOGIES, LLC AND SHOULD NOT BE USED WITHOUT WRITTEN PERMISSION		CURRENT REV DESC:		molex	
DIMENSION UNITS	SCALE				
mm	2:1			SPOT-ON1.5 DUAL RECEPTACLE HSG	
GENERAL TOLERANCES (UNLESS SPECIFIED)		EC NO: 175979		PRODUCT CUSTOMER DRAWING	
ANGULAR TOL	± 3.0 °	DRWN: MIKEDA01	2018/01/17	DOCUMENT NUMBER	
4 PLACES	± 0.2	CHK'D: AIDA	2018/05/16	2016440000	
3 PLACES	± 0.2	APPR: TKANEKO	2018/05/17	DOC TYPE	DOC PART
2 PLACES	± 0.2	INITIAL REVISION:		PSD	000
1 PLACE	± 0.2	DRWN: MIKEDA01	2017/01/20	REVISION	
0 PLACES	± 0.2	APPR: TKANEKO	2017/02/15	B	
DRAFT WHERE APPLICABLE MUST REMAIN WITHIN DIMENSIONS		THIRD ANGLE PROJECTION	DRAWING	SERIES	MATERIAL NUMBER
			A3-SIZE	201644	CUSTOMER
				GENERAL	SHEET NUMBER
				1 OF 2	

部品 PART	材質 MATERIAL
ハウジング HOUSING	ポリエステル(PBT), UL94 V-0, 色:表参照 POLYESTER (PBT), UL94 V-0, COLOR: SEE CHART
DOCUMENT STATUS	P1
RELEASE DATE	2018/05/17 00:46:16

カラーキー形状
COLOR KEY FIGURATION

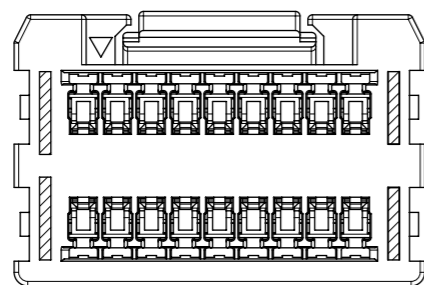


0 : NATURAL

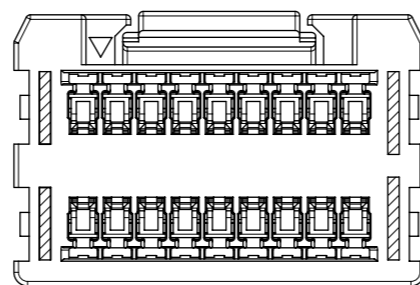
1:BLACK

肉抜き形状 (ハッチング部)
THICKNESS REDUCTION PART (HATCHING AREA)

10-18極
10-18CKTS

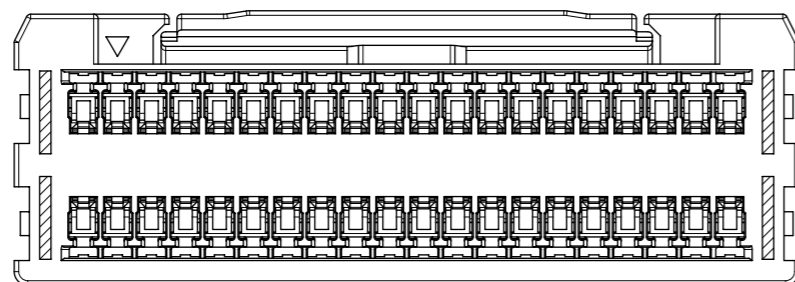


奇数CAV
ODD CAVITY



偶数CAV
EVEN CAVITY

20-40極
20-40CKTS



偶数・奇数CAV共通
COMMON WITH ODD & EVEN CAVITY

		BLACK	NATURAL	HSG COLOR
28.5	34.6	20166442401	20166442400	40
27.0	33.1	20166442381	20166442380	38
25.5	31.6	20166442361	20166442360	36
24.0	30.1	20166442341	20166442340	34
22.5	28.6	20166442321	20166442320	32
21.0	27.1	20166442301	20166442300	30
19.5	25.6	20166442281	20166442280	28
18.0	24.1	20166442261	20166442260	26
16.5	22.6	20166442241	20166442240	24
15.0	21.1	20166442221	20166442220	22
13.5	19.6	20166442201	20166442200	20
12.0	18.1	20166442181	20166442180	18
10.5	16.6	20166442161	20166442160	16
9.0	15.1	20166442141	20166442140	14
7.5	13.6	20166442121	20166442120	12
6.0	12.1	20166442101	20166442100	10
B	A	ポリ袋 POLYBAG PKG	ポリ袋 POLYBAG PKG	極数 CKT NO.
		オーダー番号 ORDER NO.	オーダー番号 ORDER NO.	

THIS DRAWING CONTAINS INFORMATION THAT IS PROPRIETARY TO MOLEX ELECTRONIC TECHNOLOGIES, LLC AND SHOULD NOT BE USED WITHOUT WRITTEN PERMISSION									
DIMENSION UNITS	SCALE	CURRENT REV DESC:							
mm	3:1								
GENERAL TOLERANCES (UNLESS SPECIFIED)		EC NO: 175979			SPOT-ON1.5 DUAL RECEPTACLE HSG PRODUCT CUSTOMER DRAWING				
ANGULAR TOL ± 3.0°		DRWN: MIKEDA01 2018/01/17							
4 PLACES ± 0.2		CHK'D: AIDA 2018/05/16			DOCUMENT NUMBER: 2016440000 DOC TYPE: PSD DOC PART: 000 REVISION: B				
3 PLACES ± 0.2		APPR: TKANEKO 2018/05/17							
2 PLACES ± 0.2		INITIAL REVISION:			MATERIAL NUMBER: 201644 CUSTOMER: GENERAL SHEET NUMBER: 2 OF 2				
1 PLACE ± 0.2		DRWN: MIKEDA01 2017/01/20							
0 PLACES ± 0.2		APPR: TKANEKO 2017/02/15							
DRAFT WHERE APPLICABLE MUST REMAIN WITHIN DIMENSIONS		THIRD ANGLE PROJECTION	DRAWING	SERIES					
			A3-SIZE	201644					