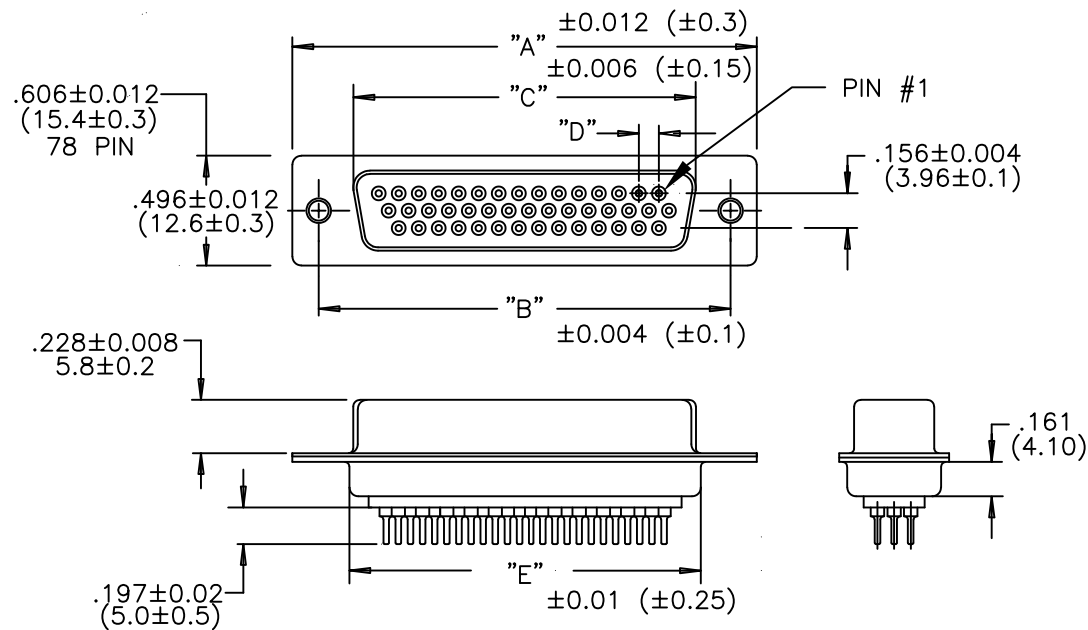


| NUMBER OF CONTACTS | "A" Inch (mm) | "B" Inch (mm) | "C" Inch (mm) | "D" Inch (mm) | "E" Inch (mm) |
|--------------------|------------------|------------------|------------------|------------------|------------------|
| 15 | 1.213 (30.80) | .984 (24.99) | .643 (16.34) | .090 (2.29) | .756 (19.20) |
| 26 | 1.543 (39.20) | 1.312 (33.32) | .972 (24.70) | .090 (2.29) | 1.091 (27.70) |
| 44 | 2.087 (53.00) | 1.852 (47.04) | 1.512 (38.40) | .090 (2.29) | 1.618 (41.10) |
| 62 | 2.732 (69.40) | 2.500 (63.50) | 2.157 (54.80) | .095 (2.41) | 2.256 (57.30) |
| 78 | 2.638 (67.00) | 2.406 (61.10) | 2.055 (52.20) | .095 (2.41) | 2.169 (55.10) |



NOTE:

MATERIAL
HOUSING: PBT UL94V-0, BLACK
230°C PROCESS TEMP
CONTACT: COPPER ALLOY
SHELL: STEEL
FINISH
CONTACT: FULL GOLD FLASH
SHELL: NICKEL
ELECTRICAL
RATED CURRENT: 3A
DWV: 500VAC RMS FOR 1 MIN
INSULATOR RESISTANCE: 1000 MΩhms MIN.
CONTACT RESISTANCE: 15 mΩhms MAX.
ENVIRONMENT
OPERATION TEMPERATURE: -50°C TO +100°C

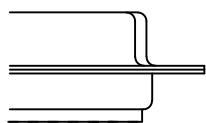
197-YYY-Y13LYY1

SERIES _____
NUMBER OF CONTACTS _____
GENDER _____
1 = MALE
2 = FEMALE (NO GROUND INDENTS)
PC MOUNT _____
3 = NICKEL SHELL _____

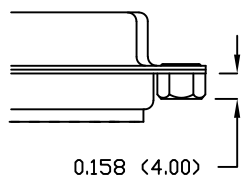
HARDWARE OPTIONS: _____
00 = .120 MOUNTING HOLE
55 = 4-40 CLINCH NUT (CN)
03 = 4-40 CLINCH NUT (CN) && 4-40 JACK SCREW

PLATING: _____
1 = GOLD FLASH

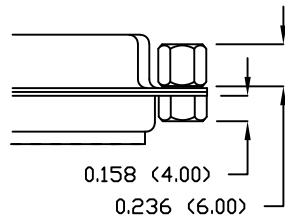
00 THRU HOLE



55 CN



03 CN // JACK SCREW



UNITS = inch (mm)

DO NOT SCALE FROM DRAWING



THESE DRAWINGS AND SPECIFICATIONS ARE THE PROPERTY OF NorComp AND SHALL NOT BE REPRODUCED, COPIED OR USED AS THE BASIS FOR THE MANUFACTURE OR SALE OF APPARATUS WITHOUT WRITTEN PERMISSION.

DRAWN:
P. JENKINS

DATE:
09/15/2005

NorComp

SCALE:
NTS

SHEET OF
1 1

REV
5

DWG NO.

197-YYY-213LYY1