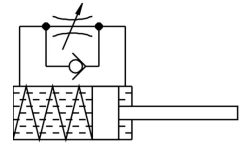


Pneumatic shock absorber YSRW-12-20

Part number: 191196

FESTO



Data sheet

| Feature | Value |
|--|---|
| Size | 12 |
| Stroke | 20 mm |
| Cushioning | Self-adjusting Soft characteristic curve |
| Mounting position | Any |
| Position sensing | None |
| Symbol | 00991495 |
| Max. impact velocity | 3 m/s |
| Reset time at room temperature | 0.3 s |
| Reset time at min. ambient temperature | 1 s |
| Mode of operation | Single-acting Pushing |
| Corrosion resistance class (CRC) | 2 - Moderate corrosion stress |
| LABS (PWIS) conformity | VDMA24364-B2-L |
| Ambient temperature | -10 °C ... 80 °C |
| Cushioning length | 20 mm |
| Max. stop force | 1000 N |
| Max. energy absorption per stroke | 12 J |
| Max. energy absorption per hour | 41000 J |
| Max. residual energy | 0.05 J |
| Resetting force | 5 N |
| Product weight | 78 g |
| Type of mounting | With lock nut |
| Note on materials | RoHS-compliant |
| Seals material | NBR |
| Housing material | Steel, galvanized |
| Piston rod material | High-alloy steel |