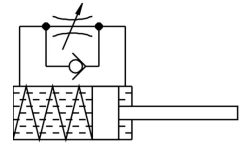


# Pneumatic shock absorber YSRW-7-10

Part number: 191193

**FESTO**



## Data sheet

| Feature                                | Value                                       |
|--|---|
| Size                                   | 7   |
| Stroke                                 | 10 mm                                       |
| Cushioning                             | Self-adjusting<br>Soft characteristic curve |
| Mounting position                      | Any   |
| Position sensing                       | None  |
| Symbol                                 | 00991495                                    |
| Max. impact velocity                   | 3 m/s                                       |
| Reset time at room temperature         | 0.2 s                                       |
| Reset time at min. ambient temperature | 1 s   |
| Mode of operation                      | Single-acting<br>Pushing                    |
| Corrosion resistance class (CRC)       | 2 - Moderate corrosion stress               |
| LABS (PWIS) conformity                 | VDMA24364-B2-L                              |
| Ambient temperature                    | -10 °C ... 80 °C                            |
| Cushioning length                      | 10 mm                                       |
| Max. stop force                        | 300 N                                       |
| Max. energy absorption per stroke      | 2.5 J                                       |
| Max. energy absorption per hour        | 15000 J                                     |
| Max. residual energy                   | 0.01 J                                      |
| Resetting force                        | 1.2 N                                       |
| Product weight                         | 18 g  |
| Type of mounting                       | With lock nut                               |
| Note on materials                      | RoHS-compliant                              |
| Seals material                         | NBR   |
| Housing material                       | High-alloy steel                            |
| Piston rod material                    | High-alloy steel                            |