

SPECIFICATIONS:

ELECTRICAL:
 RATED CURRENT: 5A
 RATED VOLTAGE: 300VDC
 WITHSTANDING VOLTAGE: 500VAC (rms) FOR 1 MIN
 INSULATION RESISTANCE: > 1,000 mΩ at 500VDC
 CONTACT RESISTANCE: 13mOhms MAX
 DIELECTRIC STRENGTH: 1000VAC FOR 1 MIN
 OPERATING TEMPERATURE: -55°C TO +105°C

MATERIALS:
 SHELL: NICKEL PLATED STEEL
 BRACKET: NICKEL PLATED STEEL
 INSULATOR: NYLON 6T, UL 94V-0, BLACK
 PROCESS TEMP: 260°C
 INSULATOR: PATONE #322C, COLOR=Pc99
 CONTACT: TIN PLATED PHOSPHOR BRONZE
 GOLD FLASH MATING AREA
 TIN PLATED SOLDER AREA

Storage and Process Instructions:

For parts exposed to greater than 60% RH, it is recommended parts be baked at 125°C for 3-5 hours prior to SMT reflow process. If unsure of RH exposure, it is recommend to bake at the above temperature and time prior to SMT reflow process.

RoHS COMPLIANT

UNITS = inch [mm]

DO NOT SCALE FROM DRAWING

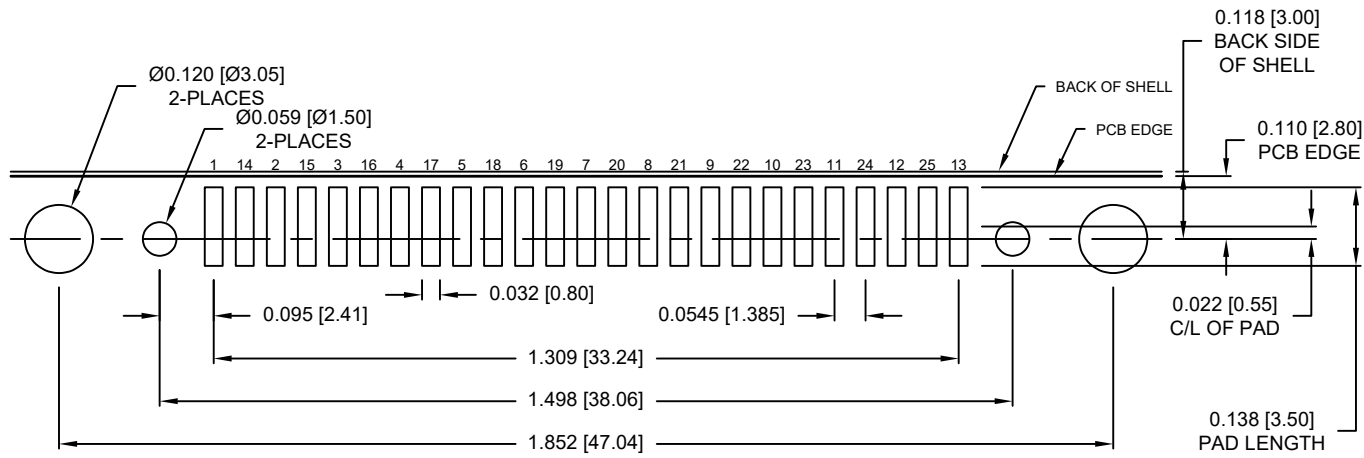


THESE DRAWINGS AND SPECIFICATIONS ARE THE PROPERTY OF NorComp AND SHALL NOT BE REPRODUCED, COPIED OR USED AS THE BASIS FOR THE MANUFACTURE OR SALE OF APPARATUS WITHOUT WRITTEN PERMISSION.

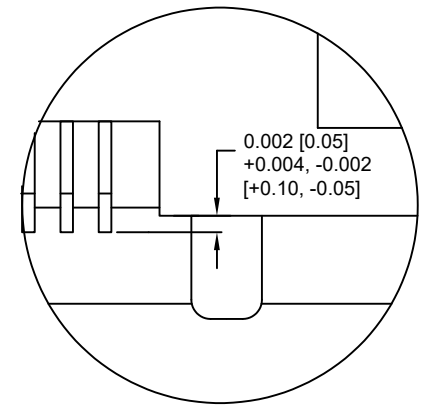
DRAWN:
C. SMITH
DATE:
04/14/2009

NorComp

SCALE: NTS	SHEET 1	OF 2	REV 12
DWG NO. 190-025-263R001			



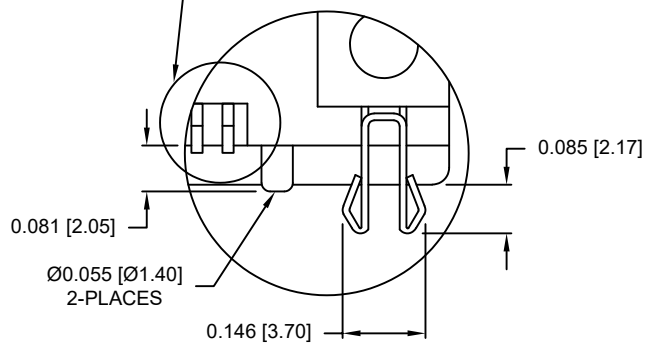
RECOMMENDED PCB LAYOUT



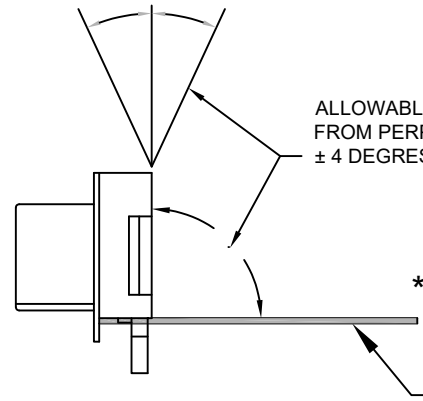
DETAIL "B"
CONTACT COPLANARITY

CONTACT ARRANGEMENT
1 14 2 15 3 16 4 17 5 18 6 19 7 20 8 21 9 22 10 23 11 24 12 25 13

SEE DETAIL "B"
FOR CONTACT
COPLANARITY



DETAIL "A"



ALLOWABLE TOLERANCE
FROM PERPENDICULAR IS
± 4 DEGRESS

****NOTE:**

RECOMMENDED PCB THICKNESS IS
0.063 [1.60] ± 0.002 [0.05] TO MAINTAIN
ANGLE TOLERANCE

RoHS COMPLIANT

UNITS = inch [mm]

DO NOT SCALE FROM DRAWING



THESE DRAWINGS AND SPECIFICATIONS ARE THE PROPERTY OF NorComp AND SHALL NOT BE REPRODUCED, COPIED OR USED AS THE BASIS FOR THE MANUFACTURE OR SALE OF APPARATUS WITHOUT WRITTEN PERMISSION.

DRAWN:
C. SMITH
DATE:
04/14/2009

NorComp

SCALE: NTS	SHEET 2	OF 2	REV 12
DWG NO. 190-025-263R001			