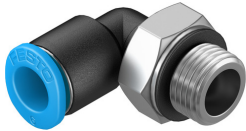


Push-in L-fitting QSML-G1/8-6

Part number: 186269

FESTO



Data sheet

Feature	Value
Size	Mini
Nominal width	3.3 mm
Type of seal on screwed plug	Sealing ring
Mounting position	Any
Design	L-shape
Pack size	10
Structural design	Push-pull principle
Operating pressure for entire temperature range	-0.095 MPa ... 0.6 MPa
Operating pressure for entire temperature range	-0.95 bar ... 6 bar
Operating pressure for entire temperature range	-13.775 psi ... 87 psi
Temperature-dependent operating pressure	-0.095 MPa ... 1.4 MPa
Temperature-dependent operating pressure	-0.95 bar ... 14 bar
Temperature-dependent operating pressure	-13.775 psi ... 203 psi
Maritime classification	See certificate
Operating medium	Compressed air as per ISO 8573-1:2010 [7:-:-]
Information on operating and pilot media	Operation with oil lubrication possible
Corrosion resistance class (CRC)	1 - Low corrosion stress
LABS (PWIS) conformity	VDMA24364-B1/B2-L
Ambient temperature	-10 °C ... 80 °C
Nominal tightening torque	7 Nm
Tolerance for nominal tightening torque	± 20%
Product weight	9.7 g
Type of mounting	External hexagon, AF 13
Pneumatic connection 1	External thread G1/8
Pneumatic connection 2	for pneumatic tubing outside diameter 6 mm
Releasing ring color	Blue
Note on materials	RoHS-compliant
Housing material	PBT
Releasing ring material	POM
Material of tubing seal	NBR
Material of tube retaining claw	High-alloy stainless steel