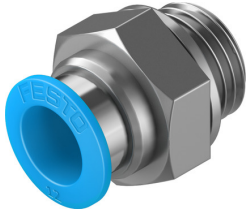


# Push-in fitting QS-G1/2-12

Part number: 186104

**FESTO**



## Data sheet

| Feature   | Value  |
|---|--|
| Size  | Standard   |
| Nominal width                                   | 11 mm  |
| Type of seal on screwed plug                    | Sealing ring   |
| Mounting position                               | Any  |
| Design  | Straight design  |
| Pack size                                       | 1  |
| Structural design                               | Push-pull principle  |
| Operating pressure for entire temperature range | -0.095 MPa ... 0.6 MPa   |
| Operating pressure for entire temperature range | -0.95 bar ... 6 bar  |
| Operating pressure for entire temperature range | -13.775 psi ... 87 psi   |
| Temperature-dependent operating pressure        | -0.095 MPa ... 1.4 MPa   |
| Temperature-dependent operating pressure        | -0.95 bar ... 14 bar   |
| Temperature-dependent operating pressure        | -13.775 psi ... 203 psi  |
| Maritime classification                         | See certificate  |
| Operating medium                                | Compressed air as per ISO 8573-1:2010 [7:-:-]<br>Water as per manufacturer's declaration at <a href="http://www.festo.com">www.festo.com</a> |
| Information on operating and pilot media        | Operation with oil lubrication possible  |
| Corrosion resistance class (CRC)                | 1 - Low corrosion stress   |
| LABS (PWIS) conformity                          | VDMA24364-B1/B2-L  |
| Ambient temperature                             | -10 °C ... 80 °C   |
| Nominal tightening torque                       | 26 Nm  |
| Tolerance for nominal tightening torque         | ± 20%  |
| Product weight                                  | 39 g   |
| Type of mounting                                | External hexagon, AF 24  |
| Pneumatic connection 1                          | External thread G1/2   |
| Pneumatic connection 2                          | for pneumatic tubing outside diameter 12 mm  |
| Releasing ring color                            | Blue   |
| Note on materials                               | RoHS-compliant   |
| Housing material                                | Brass, nickel-plated   |
| Releasing ring material                         | POM  |
| Material of tubing seal                         | NBR  |
| Material of tube retaining claw                 | High-alloy stainless steel   |