

HB-IP-24-WWW-PC

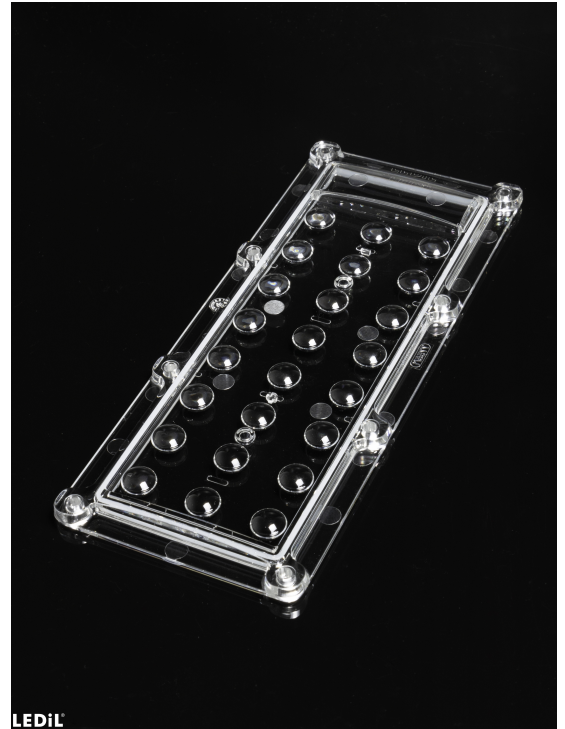
~90° wide beam. Variant made from PC.

SPECIFICATION:

Dimensions	173.0 x 71.4 mm
Height	10 mm
Fastening	pin, screw
Ingress protection classes	IP66, IP67
ROHS compliant	yes ⓘ

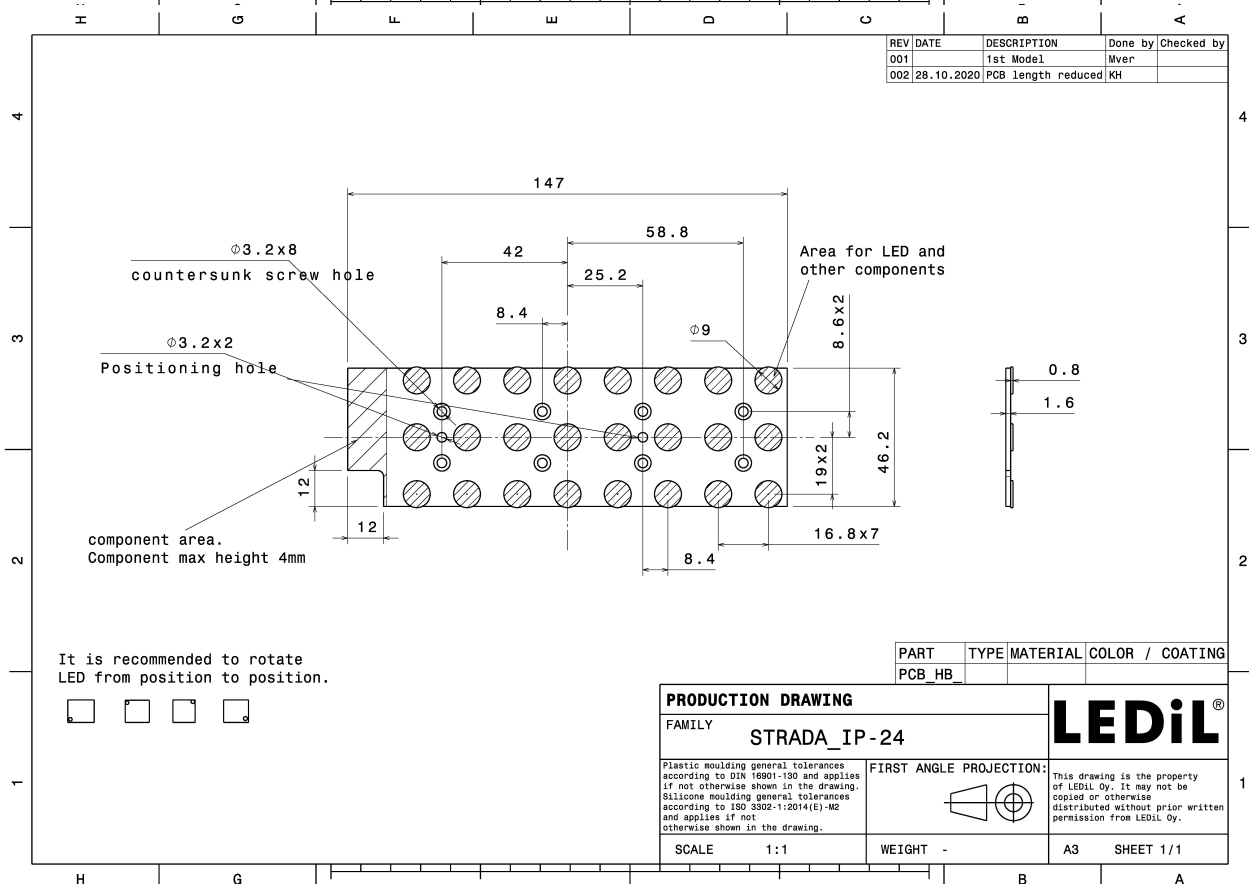
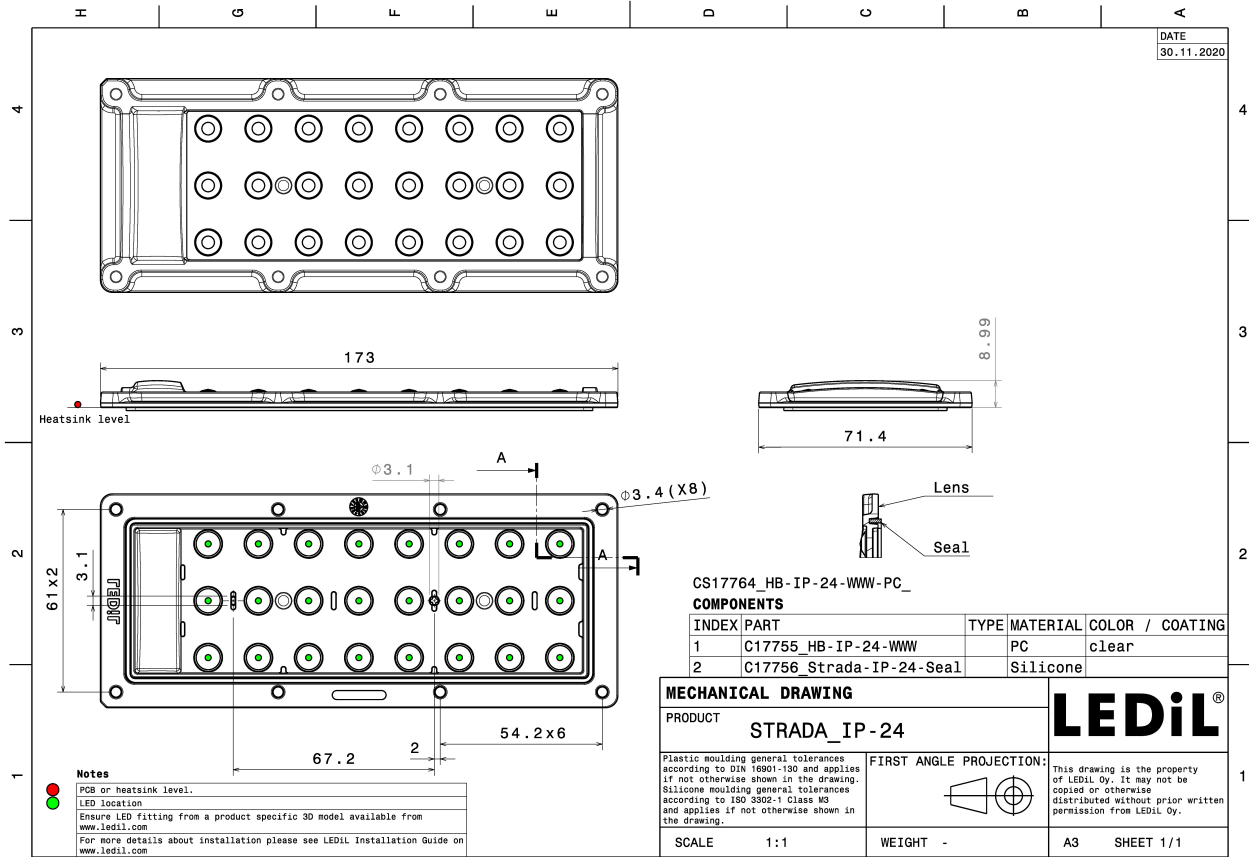
MATERIALS:

Component	Type	Material	Colour	Finish
HB-IP-24-WWW-PC	Multi-lens	PC	clear	
STRADA-IP-24-SEAL	Seal	Silicone	white	



ORDERING INFORMATION:

Component	Qty in box	MOQ	MPQ	Box weight (kg)
CS17764_HB-IP-24-WWW-PC » Box size: 476 x 273 x 247 mm	120	120	40	5.2

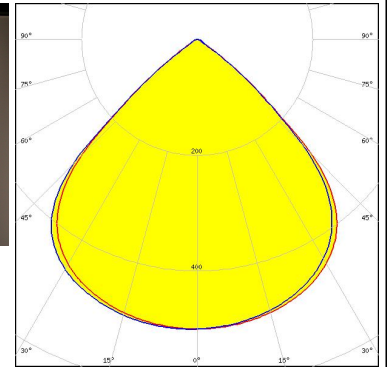


See also our general installation guide: www.ledil.com/installation_guide

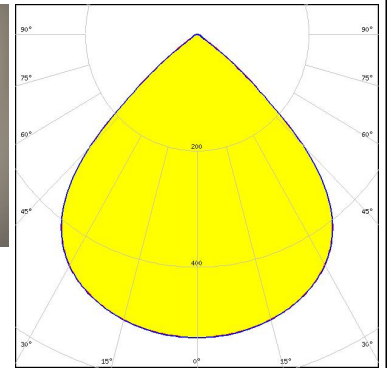
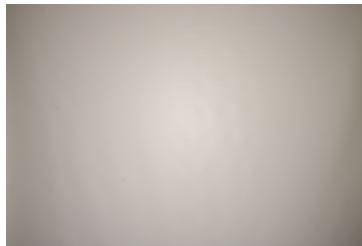
OPTICAL RESULTS (MEASURED):



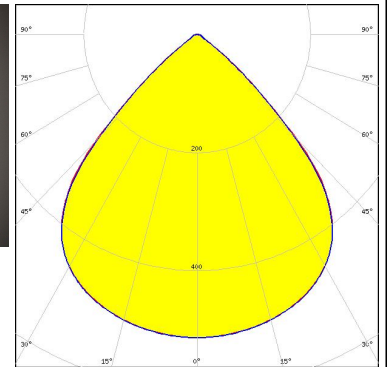
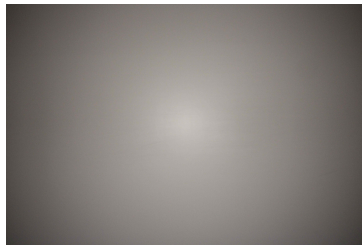
LED LIGHT ENGINE STRADA-IP 24 LEDs 147.4 x 46.2 x 1.5
 FWHM / FWTM 92.0° / 109.0°
 Efficiency 94 %
 Peak intensity 0.5 cd/m
 LEDs/each optic 1
 Light colour White
 Required components:



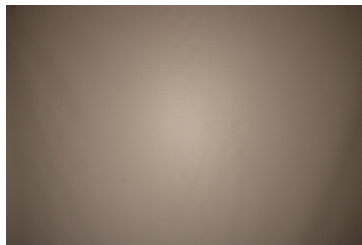
LED LUXEON 5050 HE
 FWHM / FWTM 91.0° / 108.0°
 Efficiency 94 %
 Peak intensity 0.5 cd/m
 LEDs/each optic 1
 Light colour White
 Required components:



LED LUXEON 5050 Square LES
 FWHM / FWTM 90.0° / 108.0°
 Efficiency 93 %
 Peak intensity 0.5 cd/m
 LEDs/each optic 1
 Light colour White
 Required components:



LED LUXEON XR-5050 HE (L225-xxxx024MLU010)
 FWHM / FWTM 92.0° / 109.0°
 Efficiency 95 %
 Peak intensity 0.5 cd/m
 LEDs/each optic 1
 Light colour White
 Required components:

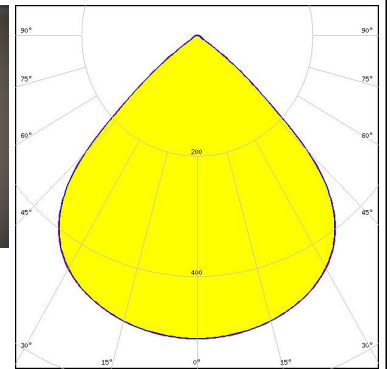


OPTICAL RESULTS (MEASURED):

OSRAM

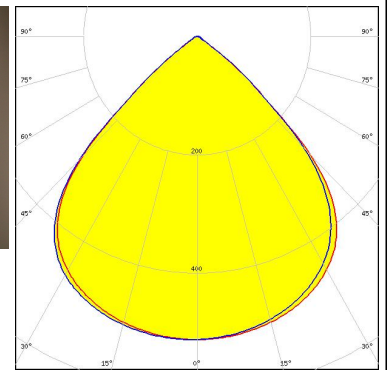
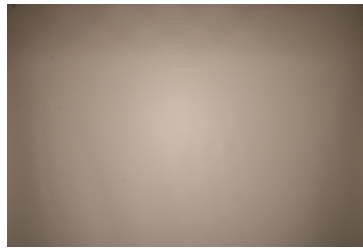
Opto Semiconductors

LED OSCONIQ S 5050
FWHM / FWTM 91.0° / 109.0°
Efficiency 93 %
Peak intensity 0.5 cd/lm
LEDs/each optic 1
Light colour White
Required components:



SAMSUNG

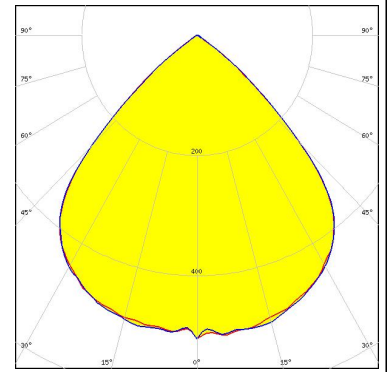
LED HiLOM RM24 ZP (LH502D)
FWHM / FWTM 92.0° / 109.0°
Efficiency 95 %
Peak intensity 0.5 cd/lm
LEDs/each optic 1
Light colour White
Required components:



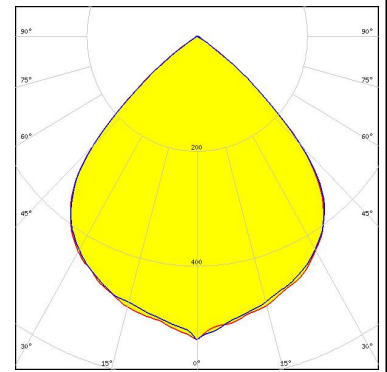
OPTICAL RESULTS (SIMULATED):



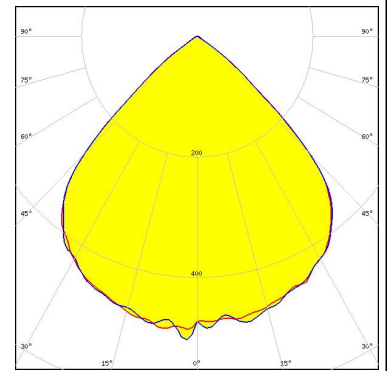
LED J Series 5050 Round LES
 FWHM / FWTM 90.0° / 108.0°
 Efficiency 90 %
 Peak intensity 0.5 cd/lm
 LEDs/each optic 1
 Light colour White
 Required components:



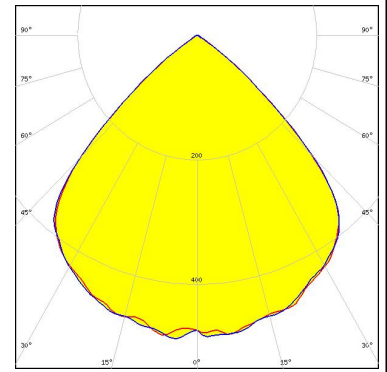
LED J Series 5050C 6V E Class
 FWHM / FWTM 90.0° / 110.0°
 Efficiency 90 %
 Peak intensity 0.5 cd/lm
 LEDs/each optic 1
 Light colour White
 Required components:



LED RecLED 147x47mm 5800lm 7x0 5050 STRADA-IP-24 G2
 FWHM / FWTM 92.0° / 110.0°
 Efficiency 90 %
 Peak intensity 0.5 cd/lm
 LEDs/each optic 1
 Light colour White
 Required components:



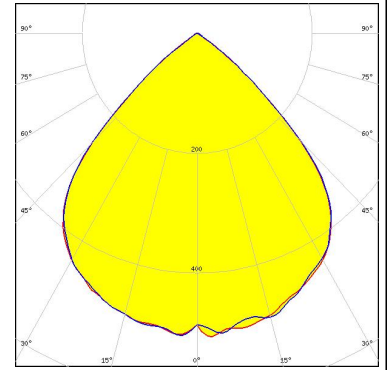
LED NFMW48xA
 FWHM / FWTM 92.0° / 110.0°
 Efficiency 90 %
 Peak intensity 0.5 cd/lm
 LEDs/each optic 1
 Light colour White
 Required components:



OPTICAL RESULTS (SIMULATED):

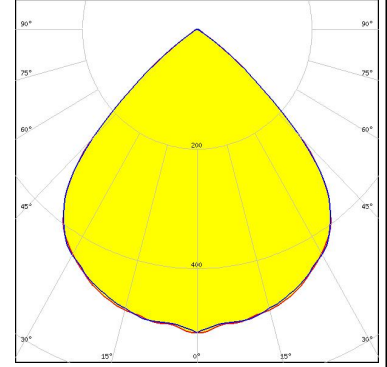
SAMSUNG

LED HiLOM RM24 ZP (LH502C)
FWHM / FWTM 90.0° / 108.0°
Efficiency 90 %
Peak intensity 0.5 cd/lm
LEDs/each optic 1
Light colour White
Required components:



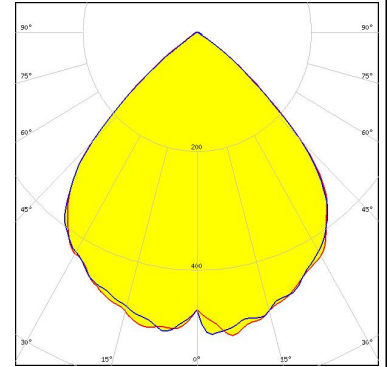
SAMSUNG

LED LH502C
FWHM / FWTM 90.0° / 108.0°
Efficiency 90 %
Peak intensity 0.5 cd/lm
LEDs/each optic 1
Light colour White
Required components:



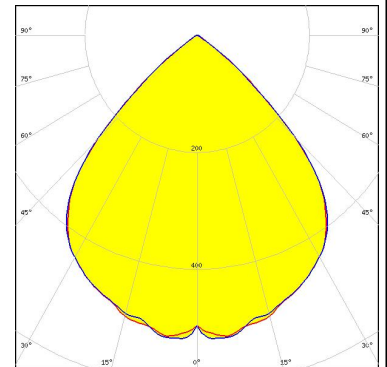
SAMSUNG

LED LH502D
FWHM / FWTM 90.0° / 110.0 + 109.0°
Efficiency 90 %
Peak intensity 0.5 cd/lm
LEDs/each optic 1
Light colour White
Required components:



SAMSUNG

LED LH508C
FWHM / FWTM 90.0° / 108.0°
Efficiency 90 %
Peak intensity 0.5 cd/lm
LEDs/each optic 1
Light colour White
Required components:



OPTICAL RESULTS (SIMULATED):



GENERAL INFORMATION:

NOTE: The typical beam angle will be changed by different color, chip size and chip position tolerance. The typical total beam angle is the full angle measured where the luminous intensity is half of the peak value.

MATERIALS:

As part of our continuous research and improvement processes, and to ensure the best possible quality and availability of our products, LEDiL reserves the right to change material grades without notice.

PRODUCT DATA USER AGREEMENT AND DISCLAIMER:

The measured data in the provided downloadable LEDiL Product Datasheets and Mechanical 2D-Drawings is rounded and provided as reference for planning. LEDiL Oy's optical specifications have been verified by conducting performance testing of the products in accordance with the company's quality system. The reported data are averaged results of multiple measurements with typical variation. LEDiL Oy reserves the right to without prior notification make changes and improvements to its products.

LEDiL Oy assumes neither warranty, nor guarantee nor any other liability of any kind for the contents and correctness of the provided data. The provided data has been generated with highest diligence but the provided data may in reality not represent the complete possible variation range of all intrinsic parameters. Therefore, in certain cases a deviation from the provided data could occur.

LEDiL Oy reserves the right to undertake technical changes of its products without further notification which could lead to changes in the provided data. LEDiL Oy assumes no liability of any kind for the possible deviation from any provided data or any other damage resulting from the usage of the provided data.

The user agrees to this disclaimer and user agreement with the download or usage of the provided files.

LEDiL Oy

Joensuunkatu 13
FI-24240 SALO
Finland

LEDiL Inc.

228 West Page Street
Suite D
Sycamore IL 60178
USA

Ledil Optics Technology (Shenzhen) Co., Ltd.

405 , Block B
Casic Motor Building
Shenzhen 518057
P.R.CHINA

Local sales and technical support

[www.ledil.com/
where_to_buy](http://www.ledil.com/where_to_buy)

Shipping locations

Salo, Finland
Hong Kong, China

Distribution Partners

[www.ledil.com/
where_to_buy](http://www.ledil.com/where_to_buy)