

# Data sheet

## 1744.0 SVB 400 LG



Screw-distributor block, Screw connection, Mounting type: Mounting rail TS 35/7.5 and mounting surface, Rated cross-section of input: 185 mm<sup>2</sup>, Rated cross-section of output: 10, 16 and 35 mm<sup>2</sup>, Colour: Light grey

**RAL:** 9018

### Business data

Article number	1744.0
Article name	SVB 400 LG
GTIN (EAN)	4044211143510
Packaging unit	1
Quantity unit	PC
Weight per piece (not including packaging)	392.4 g
Weight per piece (including packaging)	403 g
Unit of weight	G
Customs number	85369010
Country of origin	FR
Product description	Screw-type distribution block
Colour	Light grey

# Data sheet

## 1744.0 SVB 400 LG

### Technical data

#### Dimensions

Length	96 mm
Width	44 mm
Height	50 mm
Height TS 35/7.5	53 mm

#### Ratings

Rated voltage AC	1000 V
Rated voltage DC	1500 V
Rated current Cu	400 A
Input: rated cross section	185 mm <sup>2</sup>
Output A: rated cross-section	35 mm <sup>2</sup>
Output B: rated cross-section	16 mm <sup>2</sup>
Output C: rated cross-section	10 mm <sup>2</sup>
Rated impulse voltage	2,5 kV
Overvoltage category	III
Contamination degree	3

# Data sheet

## 1744.0 SVB 400 LG

### Technical data

#### Connection data

Connection principle	Screw connection
Connections	12
Number of inputs	1
Number of outputs A	2
Number of outputs B	5
Number of outputs C	4
Input: wire cross-section rigid, min.	95 mm <sup>2</sup>
Input: wire cross-section rigid, max.	185 mm <sup>2</sup>
Input: wire cross-section stranded, min.	95 mm <sup>2</sup>
Input: wire cross-section stranded, max.	150 mm <sup>2</sup>
Input: wire cross-section stranded, with wire-endferrules, min.	95 mm <sup>2</sup>
Input: wire cross-section stranded, with wire-endferrules, max.	150 mm <sup>2</sup>
Input: wire cross-section rigid AWG, min.	3/0
Input: wire cross-section rigid AWG, max.	350 Kcmil
Input: wire cross-section stranded AWG, min.	3/0
Input: wire cross-section stranded AWG, max.	350 Kcmil
Input: wire cross-section stranded, with wire-endferrules AWG, min.	3/0
Input: wire cross-section stranded, with wire-end ferrules AWG, max.	350 Kcmil
Input: diameter	19 mm
Input: stripping length	29 mm
Input: screw head	Inner hex (Allen)
Input: screw threading	M 16
Input: torque, min.	25 Nm
Input: torque, max.	27 Nm
Output A: wire cross-section rigid, min.	6 mm <sup>2</sup>
Output A: wire cross-section rigid, max.	35 mm <sup>2</sup>
Output A: wire cross-section stranded, min.	6 mm <sup>2</sup>
Output A: wire cross-section stranded, max.	25 mm <sup>2</sup>
Output A: wire cross-section stranded with wire-end ferrules, min.	6 mm <sup>2</sup>
Output A: wire cross-section stranded with wire-end ferrules, max.	25 mm <sup>2</sup>
Output A: wire cross-section AWG, min.	14
Output A: wire cross-section AWG, max.	2
Output A: diameter	9 mm <sup>2</sup>
Output A: stripping length	12 mm
Output A: screw head	Slotted
Output A: screw threading	M 8
Output A: torque, min.	3.5 Nm

# Data sheet

## 1744.0 SVB 400 LG

### Technical data

#### Materials

Insulation housing	Polyamide 6.6
Flammability class UL 94	V-0
Working temperature, min.	-40 °C
Working temperature, max.	120 °C

#### Further technical data

Mounting type	Mounting rail TS 35/7.5 and mounting surface
Short-circuit current resistance IPK (peak value)	51 kA
Short-circuit current resistance ICW over 1 s	21 kA
SCCR rating	100
Req. Series fuse class J	350 A

#### Environmental Product Compliance

REACH Conform	No
REACH Reference date	2023-06-14
REACH Candidate Substance Note	No
REACH CAS 1 Substance	LEAD
REACH CAS 1 Percent minimal	0.1 %
REACH CAS 1 Percent maximum	4 %
REACH CAS 1 Number	7439-92-1
RoHS Conform	yes
RoHS Exception rule	6c

# Data sheet

## 1744.0 SVB 400 LG

### Approvals

#### Standards and regulations

EAC approval	TR ZU 004/2011
EAC approval granted	yes

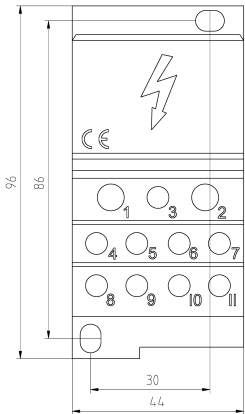
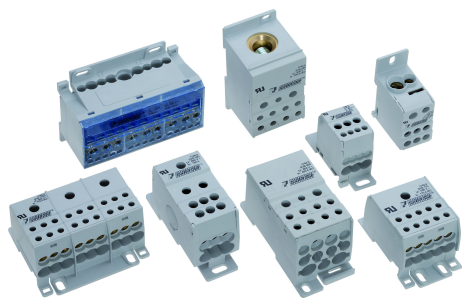
#### UL Recognized

UL approval	UL 1059
UL Usegroup B: rated voltage	600 V
UL Usegroup B: rated current	310 A
UL Usegroup C: rated voltage	600 V
UL Usegroup C: rated current	310 A
UL input: wire cross-section AWG, min.	3/0
UL input: wire cross-section AWG, max.	350 Kcmil
UL output A: wire cross-section AWG, min.	14
UL output A: wire cross-section AWG, max.	2
UL output B: wire cross-section AWG, min.	14
UL output B: wire cross-section AWG, max.	6
UL output C: wire cross-section AWG, min.	14
UL output C: wire cross-section AWG, max.	8
UL torque input	230 Lb In.
UL wire material	Cu
UL factory wiring	1
UL field wiring	1
UL overvoltage protection - req. Series fuse class J	350 A
UL SCCR rating	100 kA
UL Recognized	1

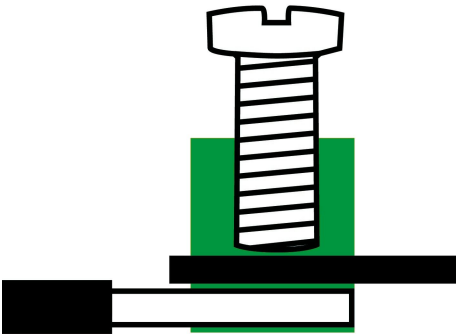
# Data sheet

## 1744.0 SVB 400 LG

### Media

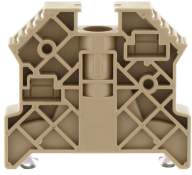


**EAC**



### Accessories

#### End stop



End stop, Mounting type: Mounting rail TS 35/7.5, Width: 9.5 mm, Colour: Beige

Article number	Article name	GTIN (EAN)	Packaging unit
<u>2828.0</u>	ES 35/K/ST BG	4044211055547	50

#### Allen key socket wrench



Inner hex key with bare blade

Article number	Article name	GTIN (EAN)	Packaging unit
<u>2772.0</u>	ISKS 6	4044211055028	1 ST

#### Screwdriver

Screwdriver with bare blade, Colour: Black-grey



Article number	Article name	GTIN (EAN)	Packaging unit
<u>1087.0</u>	SDB 0,8x4,0	4044211014803	1 ST

Screwdriver with bare blade, Colour: Black-grey



Article number	Article name	GTIN (EAN)	Packaging unit
<u>1088.0</u>	SDB 1,2x6,5	4044211014810	1 ST