

Data sheet

1743.0 SVB 250 LG



Screw-distributor block, Screw connection, Mounting type: Mounting rail TS 35/7.5 and mounting surface, Rated cross-section of input: 120 mm², Rated cross-section of output: 10, 16 and 35 mm², Colour: Light grey

RAL: 9018

Business data

Article number	1743.0
Article name	SVB 250 LG
GTIN (EAN)	4044211143503
Packaging unit	1
Quantity unit	PC
Weight per piece (not including packaging)	415.4 g
Weight per piece (including packaging)	426 g
Unit of weight	G
Customs number	85369010
Country of origin	FR
Product description	Screw-type distribution block
Colour	Light grey

Data sheet

1743.0 SVB 250 LG

Technical data

Dimensions

Length	96 mm
Width	44 mm
Height	50 mm
Height TS 35/7.5	53 mm

Ratings

Rated voltage AC	1000 V
Rated voltage DC	1500 V
Rated current Cu	230 A
Input: rated cross section	120 mm ²
Output A: rated cross-section	35 mm ²
Output B: rated cross-section	16 mm ²
Output C: rated cross-section	10 mm ²
Rated impulse voltage	2,5 kV
Overvoltage category	III
Contamination degree	3

Data sheet

1743.0 SVB 250 LG

Technical data

Connection data

Connection principle	Screw connection
Connections	12
Number of inputs	1
Number of outputs A	2
Number of outputs B	5
Number of outputs C	4
Input: wire cross-section rigid, min.	35 mm ²
Input: wire cross-section rigid, max.	120 mm ²
Input: wire cross-section stranded, min.	35 mm ²
Input: wire cross-section stranded, max.	95 mm ²
Input: wire cross-section stranded, with wire-endferrules, min.	35 mm ²
Input: wire cross-section stranded, with wire-endferrules, max.	95 mm ²
Input: wire cross-section rigid AWG, min.	2
Input: wire cross-section rigid AWG, max.	4/0
Input: wire cross-section stranded AWG, min.	2
Input: wire cross-section stranded AWG, max.	4/0
Input: wire cross-section stranded, with wire-endferrules AWG, min.	2
Input: wire cross-section stranded, with wire-end ferrules AWG, max.	4/0
Input: diameter	15 mm
Input: stripping length	29 mm
Input: screw head	Inner hex (Allen)
Input: screw threading	M 14
Input: torque, min.	19 Nm
Input: torque, max.	21 Nm
Output A: wire cross-section rigid, min.	6 mm ²
Output A: wire cross-section rigid, max.	35 mm ²
Output A: wire cross-section stranded, min.	6 mm ²
Output A: wire cross-section stranded, max.	25 mm ²
Output A: wire cross-section stranded with wire-end ferrules, min.	6 mm ²
Output A: wire cross-section stranded with wire-end ferrules, max.	25 mm ²
Output A: wire cross-section AWG, min.	14
Output A: wire cross-section AWG, max.	2
Output A: diameter	9 mm ²
Output A: stripping length	12 mm
Output A: screw head	Slotted
Output A: screw threading	M 8
Output A: torque, min.	3.5 Nm

Data sheet

1743.0 SVB 250 LG

Technical data

Materials

Insulation housing	Polyamide 6.6
Flammability class UL 94	V-0
Working temperature, min.	-40 °C
Working temperature, max.	120 °C

Further technical data

Mounting type	Mounting rail TS 35/7.5 and mounting surface
Short-circuit current resistance IPK (peak value)	51 kA
Short-circuit current resistance ICW over 1 s	24,5 kA
SCCR rating	100
Req. Series fuse class J	250 A

Environmental Product Compliance

REACH Conform	No
REACH Reference date	2023-06-14
REACH Candidate Substance Note	No
REACH CAS 1 Substance	LEAD
REACH CAS 1 Percent minimal	0.1 %
REACH CAS 1 Percent maximum	4 %
REACH CAS 1 Number	7439-92-1
RoHS Conform	yes
RoHS Exception rule	6c

Data sheet

1743.0 SVB 250 LG

Approvals

Standards and regulations

EAC approval	TR ZU 004/2011
--------------	----------------

EAC approval granted	yes
----------------------	-----

UL Recognized

UL approval	UL 1059
-------------	---------

UL Usegroup B: rated voltage	600 V
------------------------------	-------

UL Usegroup B: rated current	230 A
------------------------------	-------

UL Usegroup C: rated voltage	600 V
------------------------------	-------

UL Usegroup C: rated current	230 A
------------------------------	-------

UL input: wire cross-section AWG, min.	2
--	---

UL input: wire cross-section AWG, max.	4/0
--	-----

UL output A: wire cross-section AWG, min.	14
---	----

UL output A: wire cross-section AWG, max.	2
---	---

UL output B: wire cross-section AWG, min.	14
---	----

UL output B: wire cross-section AWG, max.	6
---	---

UL output C: wire cross-section AWG, min.	14
---	----

UL output C: wire cross-section AWG, max.	8
---	---

UL torque input	170 Lb In.
-----------------	------------

UL wire material	Cu
------------------	----

UL factory wiring	1
-------------------	---

UL field wiring	1
-----------------	---

UL overvoltage protection - req. Series fuse class J	250 A
--	-------

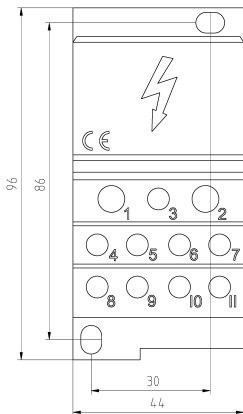
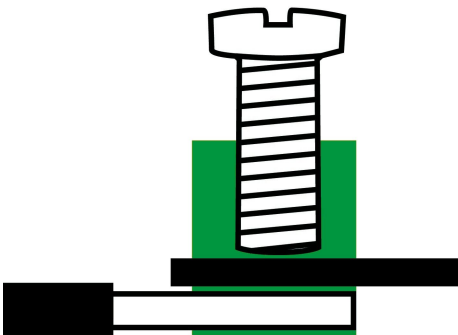
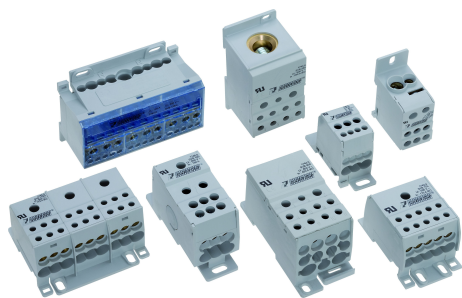
UL SCCR rating	100 kA
----------------	--------

UL Recognized	1
---------------	---

Data sheet

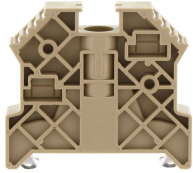
1743.0 SVB 250 LG

Media



Accessories

End stop



End stop, Mounting type: Mounting rail TS 35/7.5, Width: 9.5 mm, Colour: Beige

Article number	Article name	GTIN (EAN)	Packaging unit
<u>2828.0</u>	ES 35/K/ST BG	4044211055547	50

Allen key socket wrench



Inner hex key with bare blade

Article number	Article name	GTIN (EAN)	Packaging unit
<u>2818.0</u>	ISKS 5	4044211055448	1 ST

Screwdriver

Screwdriver with bare blade, Colour: Black-grey



Article number	Article name	GTIN (EAN)	Packaging unit
<u>1087.0</u>	SDB 0,8x4,0	4044211014803	1 ST

Screwdriver with bare blade, Colour: Black-grey



Article number	Article name	GTIN (EAN)	Packaging unit
<u>1088.0</u>	SDB 1,2x6,5	4044211014810	1 ST