

# Data sheet

## 17371.5 RK 35/35 N/IS BU



Feed-through terminal, Screw connection, Mounting type: Mounting rail TS 35/7.5, Rated cross-section: 35 mm², Width: 16 mm, Colour: Blue

**RAL:** Ähnlich 5005

### Business data

|  |                       |
|--|-----------------------|
| Article number                             | 17371.5               |
| Article name                               | RK 35/35 N/IS BU      |
| GTIN (EAN)                                 | 4044211186272         |
| Packaging unit                             | 20                    |
| Quantity unit                              | PC                    |
| Weight per piece (not including packaging) | 59.8 g                |
| Weight per piece (including packaging)     | 62.9 g                |
| Unit of weight                             | G                     |
| Customs number                             | 85369010              |
| Country of origin                          | DE                    |
| Prio-Article                               | 17371.2               |
| Product description                        | Feed-through terminal |

### Technical data

#### Dimensions

|                  |       |
|------------------|-------|
| Length           | 58 mm |
| Width            | 16 mm |
| Height TS 35/7.5 | 52 mm |

#### Ratings

|   |                    |
|---|--------------------|
| Rated voltage                                   | 800 V              |
| Rated current                                   | 125 A              |
| Rated cross-section                             | 35 mm <sup>2</sup> |
| Rated impulse voltage                           | 8 kV               |
| Overvoltage category                            | III                |
| Contamination degree                            | 3                  |
| Maximum power dissipation for nominal condition | 4 W                |

#### Connection data

|  |                     |
|--|---------------------|
| Connection principle                                     | Screw connection    |
| Connection position                                      | Lateral             |
| Connections  | 2                   |
| Number of terminals per level                            | 2                   |
| Number of levels   | 1                   |
| Wire cross-section single-core (rigid) / stranded, min.  | 2.5 mm <sup>2</sup> |
| Wire cross-section single core (rigid)/stranded, max.    | 50 mm <sup>2</sup>  |
| Wire cross-section stranded, min.                        | 2.5 mm <sup>2</sup> |
| Wire cross-section stranded, max.                        | 35 mm <sup>2</sup>  |
| Wire cross-section stranded with wire-end ferrules, min. | 2.5 mm <sup>2</sup> |
| Wire cross-section stranded with wire-end ferrules, max. | 35 mm <sup>2</sup>  |
| Wire cross-section AWG, min.                             | 12                  |
| Wire cross-section AWG, max.                             | 2                   |
| Stripping length   | 20 mm               |
| Screw head   | Inner hex (Allen)   |
| Screw threading  | M 6                 |
| Tightening torque, min.                                  | 2.5 Nm              |
| Tightening torque, max.                                  | 5 Nm                |

# Data sheet

## 17371.5 RK 35/35 N/IS BU



### Technical data

#### Materials

|                           |               |
|---------------------------|---------------|
| Insulation housing        | Polyamide 6.6 |
| Flammability class UL 94  | V-0           |
| Working temperature, min. | -40 °C        |
| Working temperature, max. | 120 °C        |

#### Further technical data

|                                     |                         |
|-------------------------------------|-------------------------|
| Mounting type                       | Mounting rail TS 35/7,5 |
| Gauge plug acc. to EN 60 947-1      | B9                      |
| Number of cross-connection channels | 1                       |

#### Environmental Product Compliance

|                                |            |
|--------------------------------|------------|
| REACH Conform                  | Yes        |
| REACH Reference date           | 2023-06-14 |
| REACH Candidate Substance Note | No         |
| RoHS Conform                   | Yes        |

### Approvals

#### Standards and regulations

|                      |                |
|----------------------|----------------|
| EAC approval         | TR ZU 004/2011 |
| EAC approval granted | yes            |

#### CSA approval

|                                  |              |
|----------------------------------|--------------|
| CSA approval                     | C22.2 No 158 |
| CSA approval granted             | yes          |
| CSA Usegroup C: rated voltage    | 600 V        |
| CSA Usegroup C: rated current    | 115 A        |
| CSA wire cross-section AWG, min. | 12           |
| CSA wire cross-section AWG, max. | 2            |
| CSA stripping length             | 20 mm        |
| CSA File Number                  | 042110_0_000 |

#### CSAus approval

|                                    |              |
|------------------------------------|--------------|
| CSAus approval                     | UL 1059      |
| CSAus approval granted             | yes          |
| CSAus Usegroup C: rated voltage    | 600 V        |
| CSAus Usegroup C: rated current    | 115 A        |
| CSAus wire cross-section AWG, min. | 12           |
| CSAus wire cross-section AWG, max. | 2            |
| CSAus stripping length             | 20 mm        |
| CSAus File Number                  | 042110_0_000 |

#### cUL Recognized

|  |              |
|--|--------------|
| cUL approval   | C22.2 No 158 |
| cUL Usegroup C: rated voltage                        | 600 V        |
| cUL Usegroup C: rated current                        | 115 A        |
| cUL wire cross-section single-core (rigid) AWG, min. | 12           |
| cUL wire cross-section single-core (rigid) AWG, max. | 2            |
| cUL wire cross-section stranded AWG, min.            | 12           |
| cUL wire cross-section stranded AWG, max.            | 2            |
| cUL torque   | 40 Nm        |
| cUL wire material                                    | Cu           |
| cUL File Number                                      | E95701       |
| cUL Recognized                                       | 1            |

### Approvals

#### KEMA KEUR approval

|   |                     |
|---|---------------------|
| KEMA KEUR approval                                | EN 60947-7-1:2009   |
| KEMA KEUR approval granted                        | yes                 |
| KEMA rated voltage                                | 1000 V              |
| KEMA rated current                                | 125 A               |
| KEMA rated impulse voltage                        | 8 kV                |
| KEMA wire cross-section single core (rigid), min. | 2.5 mm <sup>2</sup> |
| KEMA wire cross-section single-core (rigid), max. | 50 mm <sup>2</sup>  |
| KEMA wire cross-section stranded, min.            | 2.5 mm <sup>2</sup> |
| KEMA wire cross-section stranded, max.            | 35 mm <sup>2</sup>  |

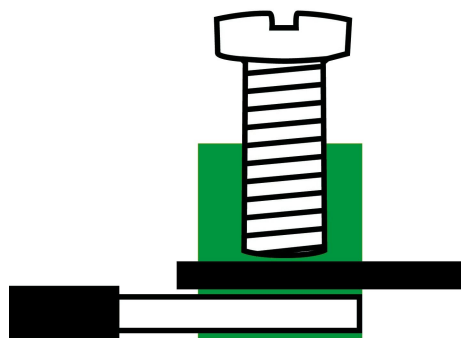
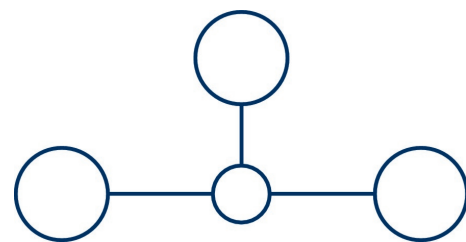
#### UL Recognized

|   |          |
|---|----------|
| UL approval   | UL 1059  |
| UL Usegroup C: rated voltage                        | 600 V    |
| UL Usegroup C: rated current                        | 115 A    |
| UL wire cross-section single-core (rigid) AWG, min. | 12       |
| UL wire cross-section single-core (rigid) AWG, max. | 2        |
| UL wire cross-section stranded AWG, min.            | 12       |
| UL wire cross-section stranded AWG, max.            | 2        |
| UL torque   | 40 Lb In |
| UL wire material                                    | Cu       |
| UL factory wiring                                   | 1        |
| UL field wiring                                     | 1        |
| UL File Number                                      | E95701   |
| UL Recognized                                       | 1        |

#### German Lloyd approval

|                            |   |
|----------------------------|---|
| DNV GL Certificate number  | TAE00002JF                                |
| DNV GL Location Classes    | Temperature: B, Humidity: B, Vibration: A |
| DNV GL approval granted    | 1   |
| DNV GL rated cross-section | 35 mm <sup>2</sup>                        |
| DNV GL rated current       | 125 A                                     |
| DNV GL rated voltage       | 800 V                                     |
| DNV GL test standard       | IEC 60947-7-1:2002                        |

Media



## Accessories

### Cover



Cover, Length: 37.3 mm, Width: 16 mm, Colour: Yellow

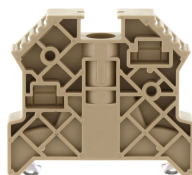
| Article number | Article name   | GTIN (EAN)    | Packaging unit |
|----------------|----------------|---------------|----------------|
| <u>2956.0</u>  | AD 1/16/N/B YE | 4044211056841 | 20 ST          |



Cover, Length: 37.3 mm, Width: 16 mm, Colour: White

| Article number | Article name | GTIN (EAN)    | Packaging unit |
|----------------|--------------|---------------|----------------|
| <u>2968.0</u>  | AD 1/16/N WH | 4044211056971 | 20 ST          |

### End stop



End stop, Mounting type: Mounting rail TS 35/7.5, Width: 9.5 mm, Colour: Beige

| Article number | Article name  | GTIN (EAN)    | Packaging unit |
|----------------|---------------|---------------|----------------|
| <u>2828.0</u>  | ES 35/K/ST BG | 4044211055547 | 50             |

### Cross-connector



Cross-connector, No. of poles: 3, Mounting type: Can be screwed on, Width: 41 mm, Rated cross-section: 35 mm<sup>2</sup>, Colour: natural

| Article number | Article name | GTIN (EAN)    | Packaging unit |
|----------------|--------------|---------------|----------------|
| <u>17287.0</u> | Q 3          | 4044211180331 | 20 ST          |



Cross-connector, No. of poles: 10, Mounting type: Can be screwed on, Width: 153 mm, Rated cross-section: 35 mm<sup>2</sup>, Colour: natural

| Article number | Article name | GTIN (EAN)    | Packaging unit |
|----------------|--------------|---------------|----------------|
| <u>17289.0</u> | Q 10         | 4044211180355 | 10 ST          |

### Cross-connector



Cross-connector, No. of poles: 2, Mounting type: Can be screwed on, Width: 25 mm, Rated cross-section: 35 mm<sup>2</sup>, Colour: natural

| Article number | Article name | GTIN (EAN)    | Packaging unit |
|----------------|--------------|---------------|----------------|
| <u>17253.0</u> | Q 2          | 4044211186531 | 20 ST          |



Cross-connector, No. of poles: 4, Mounting type: Can be screwed on, Width: 57 mm, Rated cross-section: 35 mm<sup>2</sup>, Colour: natural

| Article number | Article name | GTIN (EAN)    | Packaging unit |
|----------------|--------------|---------------|----------------|
| <u>17288.0</u> | Q 4          | 4044211180348 | 10 ST          |

### Quick marking



Terminal marker / Pocket Maxicard, Length: 5 mm, Width: 6 mm, Colour: White

| Article number | Article name   | GTIN (EAN)    | Packaging unit |
|----------------|----------------|---------------|----------------|
| <u>4702.7</u>  | PMC SB 6/50 WH | 4044211089986 | 500 ST         |